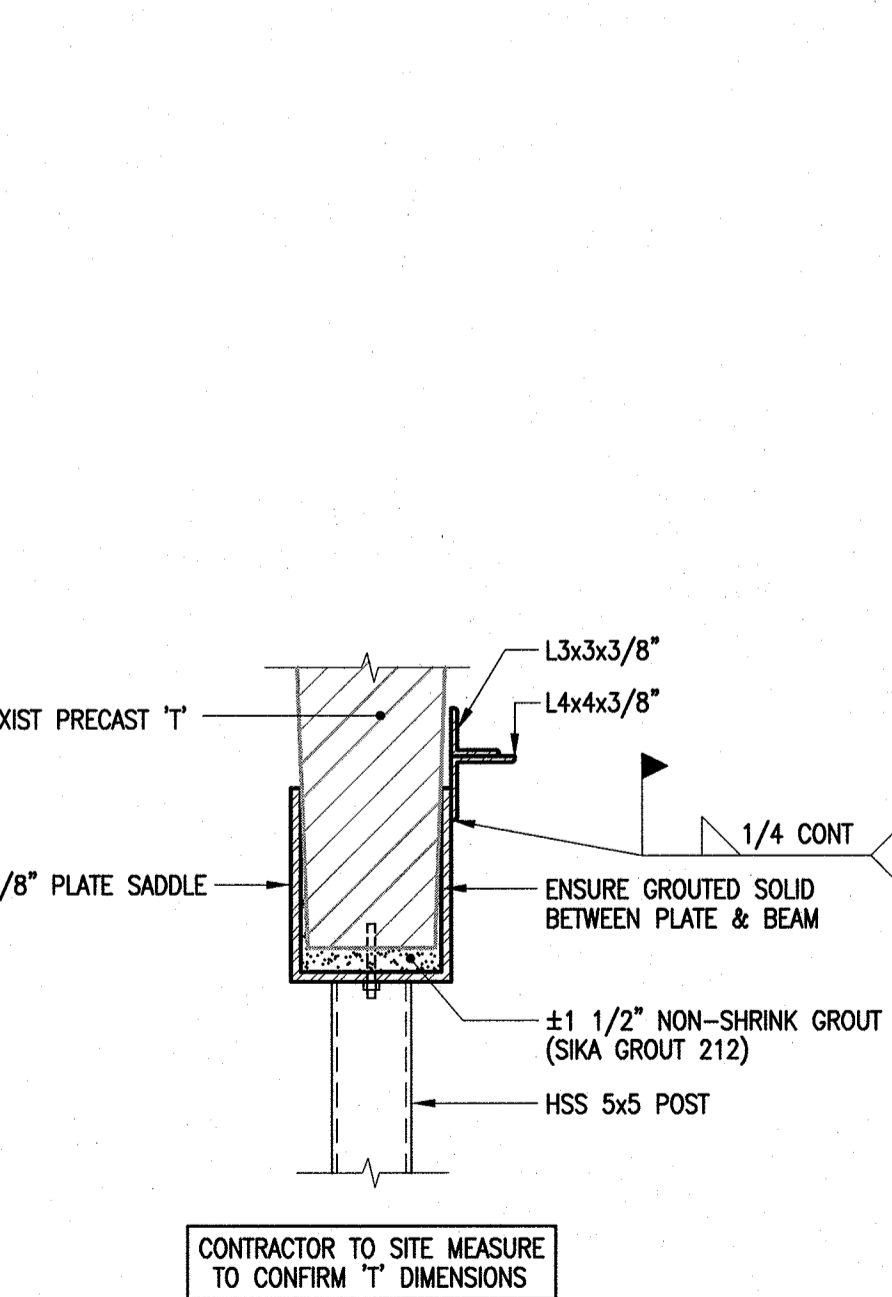
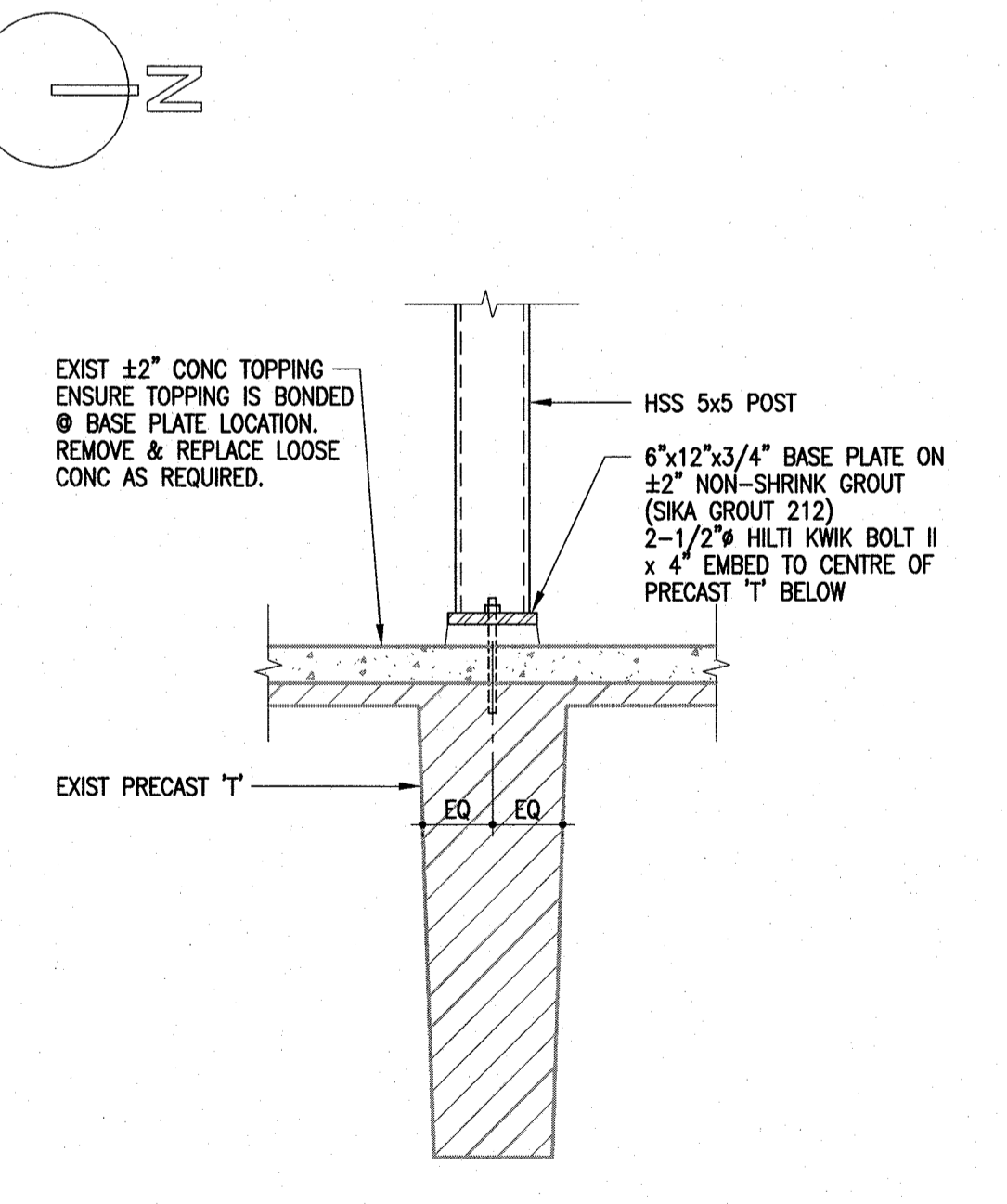


**LEVEL P3/P4 FLOOR PLAN**  
 1/16" = 1'-0"  
 SHORING SHOWN ON FLOOR LAYOUT IS FOR SUPPORT OF PRECAST 'T' ON LEVEL ABOVE

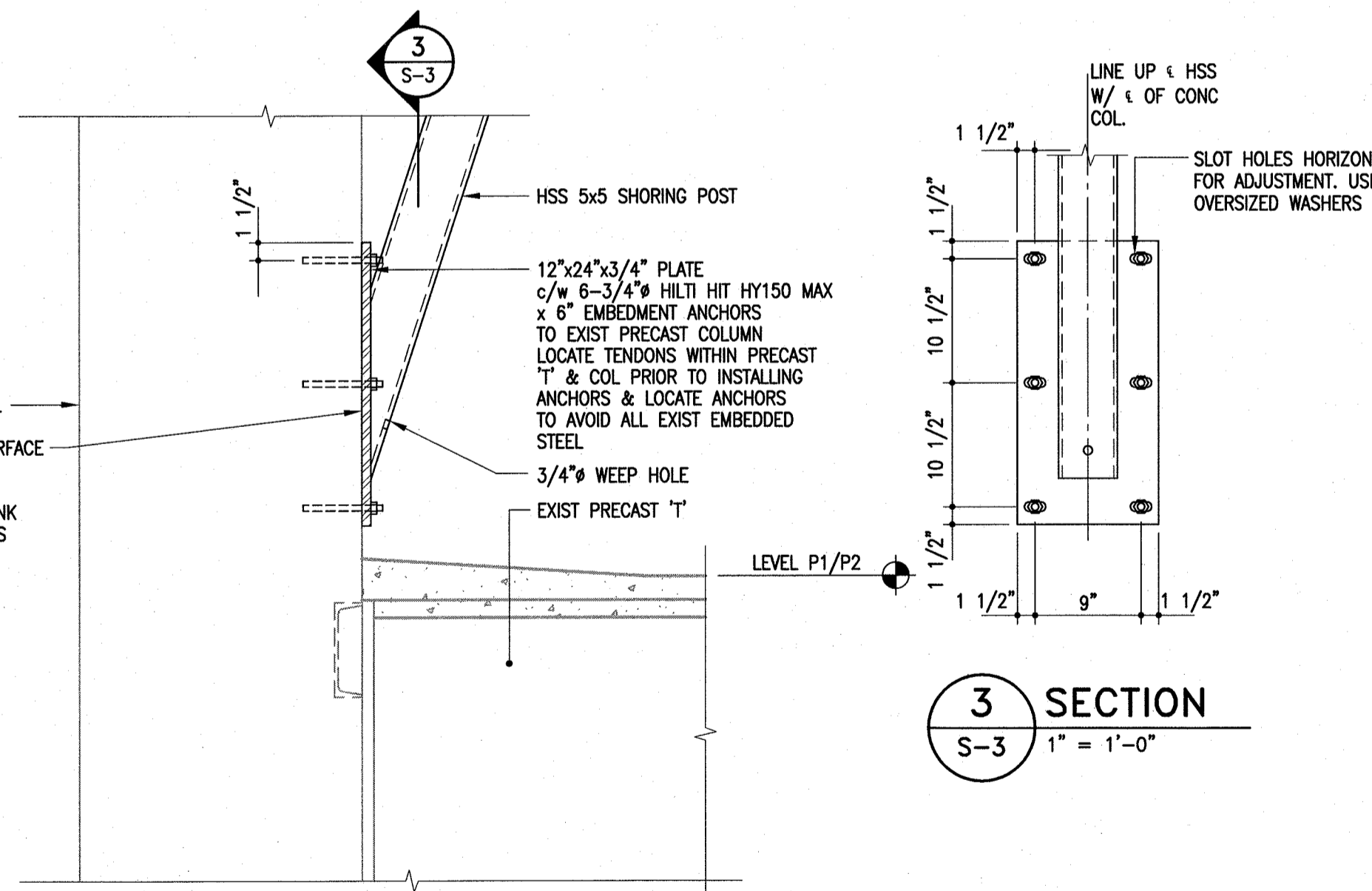
SHORING LEGEND	
●	SHORING TYPE 'A' - U/S OF LEVEL P1 TO BASEMENT (SEE 1/S-1)
⊙	SHORING TYPE 'B' - U/S OF LEVEL P2 TO BASEMENT (SEE 2/S-1)
⊗	SHORING TYPE 'C' - U/S OF LEVEL P3/P4 TO LEVEL P1/P2 (SEE 1/S-2 & 2/S-2)
⊘	SHORING TYPE 'D' - U/S OF LEVEL P5/P6 TO LEVEL P3/P4 (SEE 1/S-2)
⊠	SADDLE BRACKET TYPE 'E' BOLTED TO EXISTING BEAM (SEE 3/S-1)
⊡	SADDLE BRACKET TYPE 'F' BOLTED TO EXISTING BEAM (SEE 5/S-1)
○	EXISTING SHORING



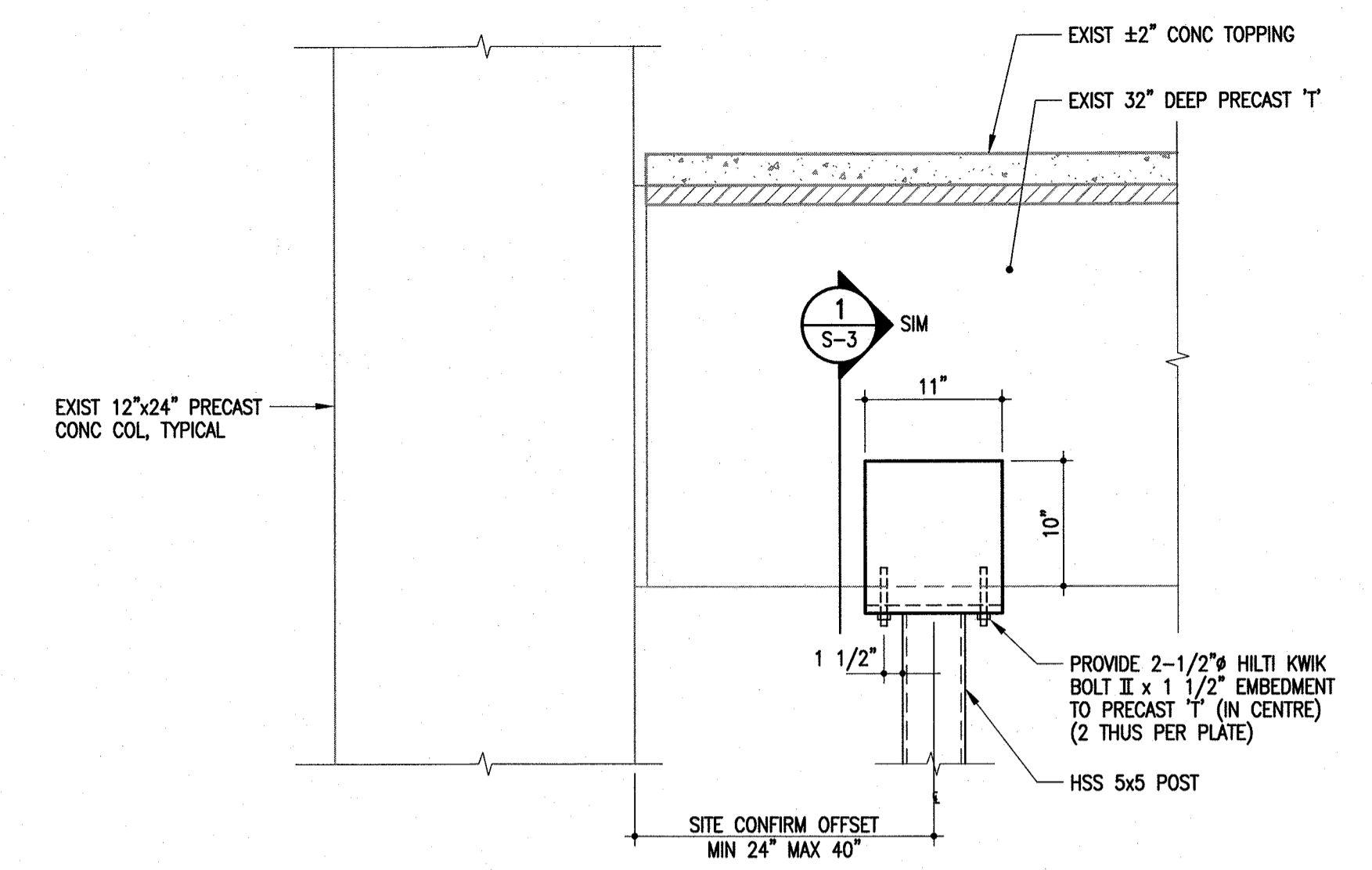
**1 SADDLE CONNECTION SECTION**  
 S-3 1" = 1'-0"



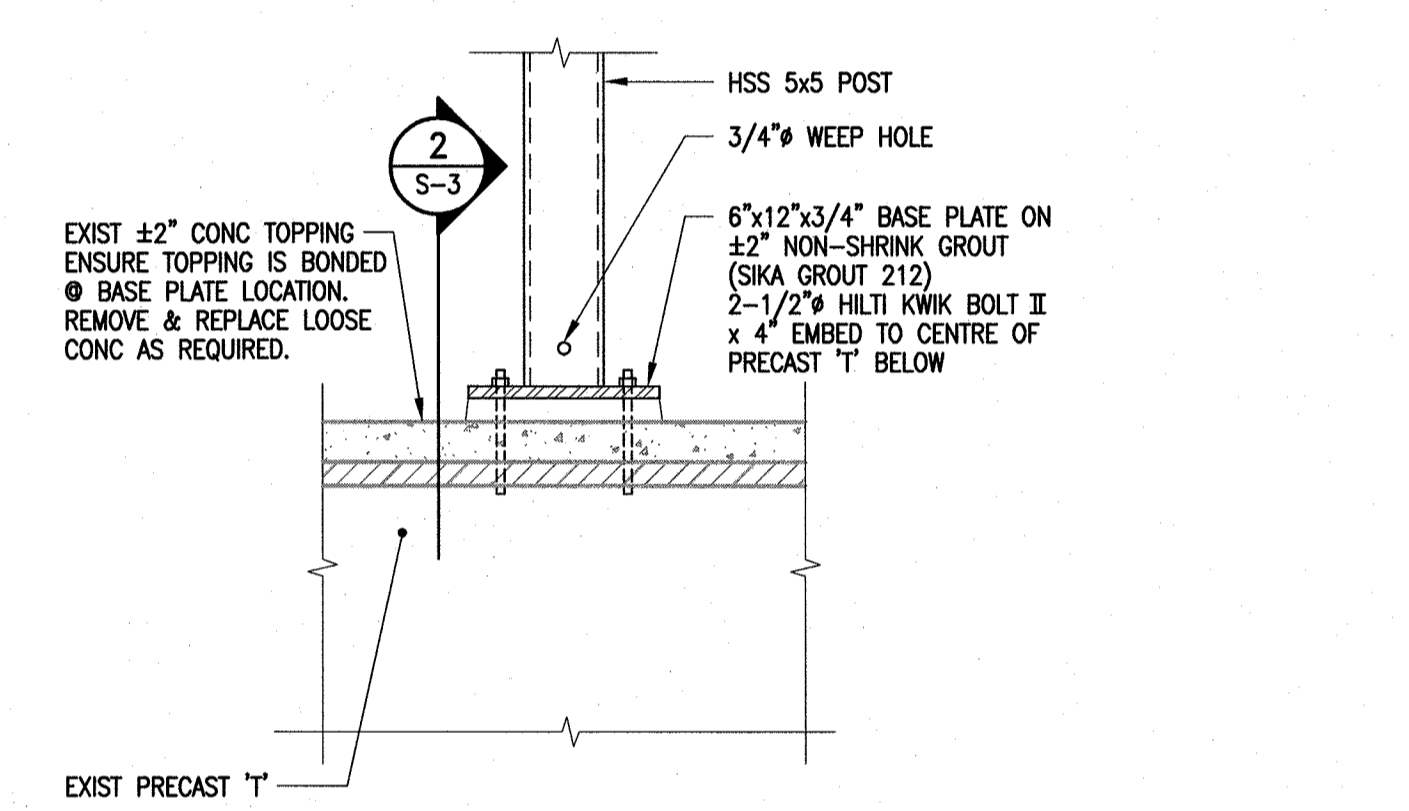
**2 BASE CONNECTION SECTION**  
 S-3 1" = 1'-0"



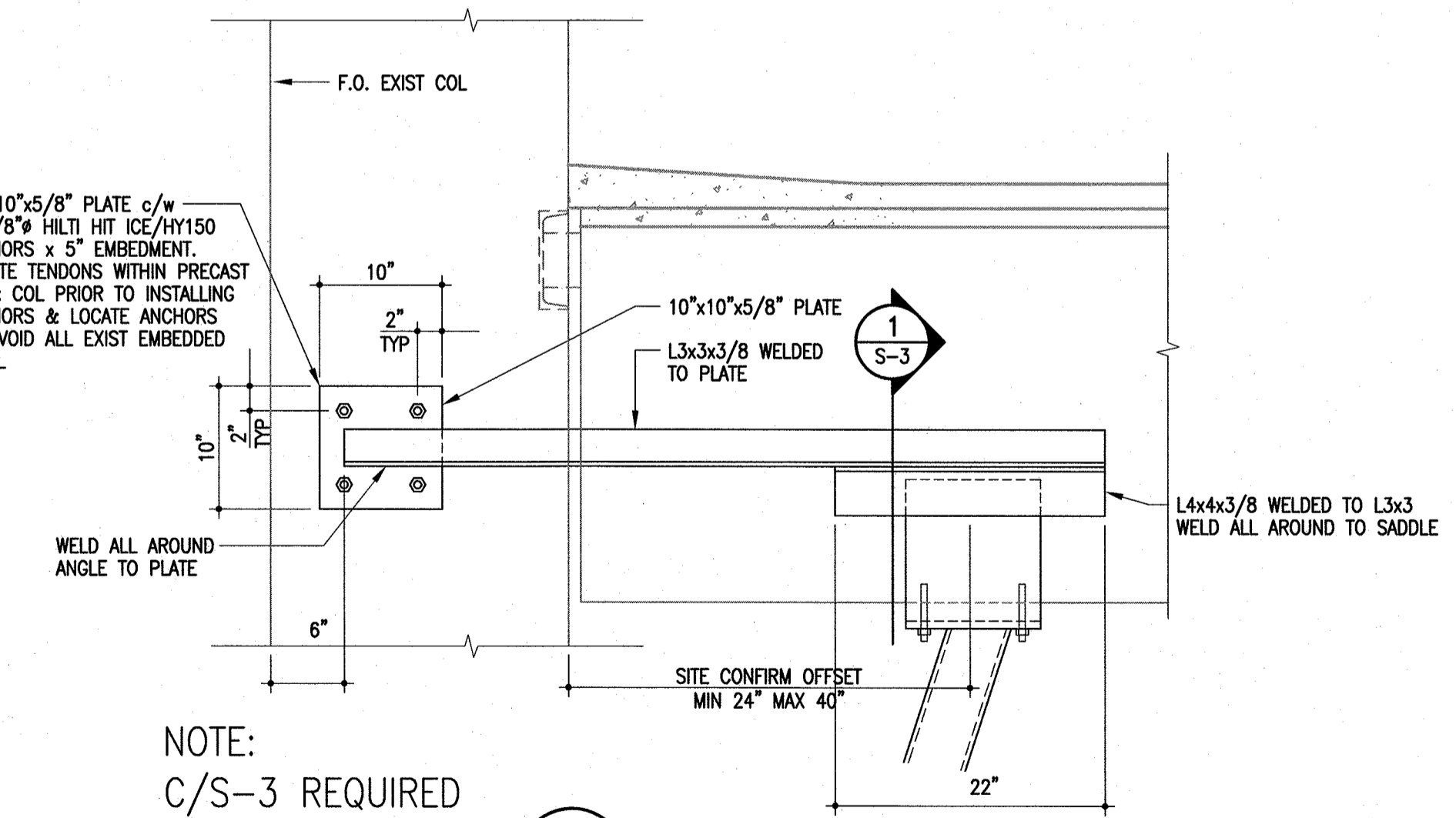
**D ANGLED SHORING POST PLATE**  
 S-3 1" = 1'-0"



**A SADDLE CONNECTION DETAIL**  
 S-3 1" = 1'-0"

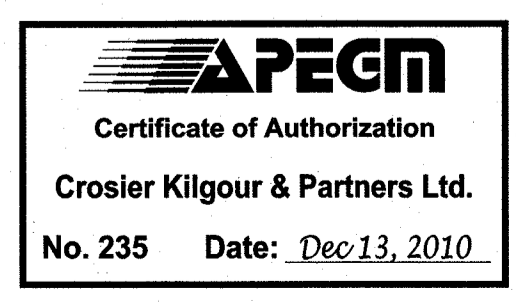


**B BASE CONNECTION DETAIL**  
 S-3 1" = 1'-0"

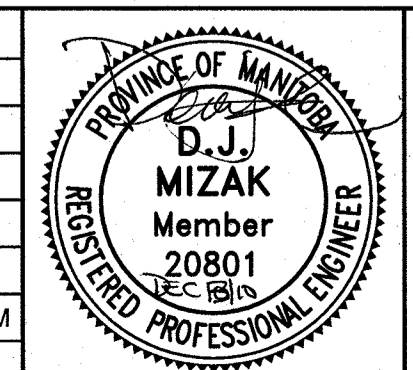


**C DETAIL**  
 S-3 1" = 1'-0"

NOTE:  
 C/S-3 REQUIRED ONE SIDE ONLY



No.	Date	Issue/Revision	By
1	13 DEC 2010	ISSUED FOR CONSTRUCTION	DJM



300-275 Carlton Street  
 Winnipeg, Manitoba R3C 5R6  
 T 204. 943. 7501  
 F 204. 943. 7507

**Crosier Kilgour & Partners Ltd.**  
 CONSULTING STRUCTURAL ENGINEERS

The General Contractor shall check & verify all dimensions and report any errors or omissions to the designers.					
Project <b>CIVIC CENTRE CAR PARK SHORING INSTALLATION</b> 171 PRINCESS STREET WINNIPEG, MANITOBA					
Sheet Title LEVEL P3/P4 FLOOR PLAN, SECTIONS AND DETAILS					
Sheet No. <b>S-3</b>					
Design	Drawn	Checked	Scale	Date	File
RDM	JLP	DJM	AS NOTED	13 DEC 2010	2010-1074