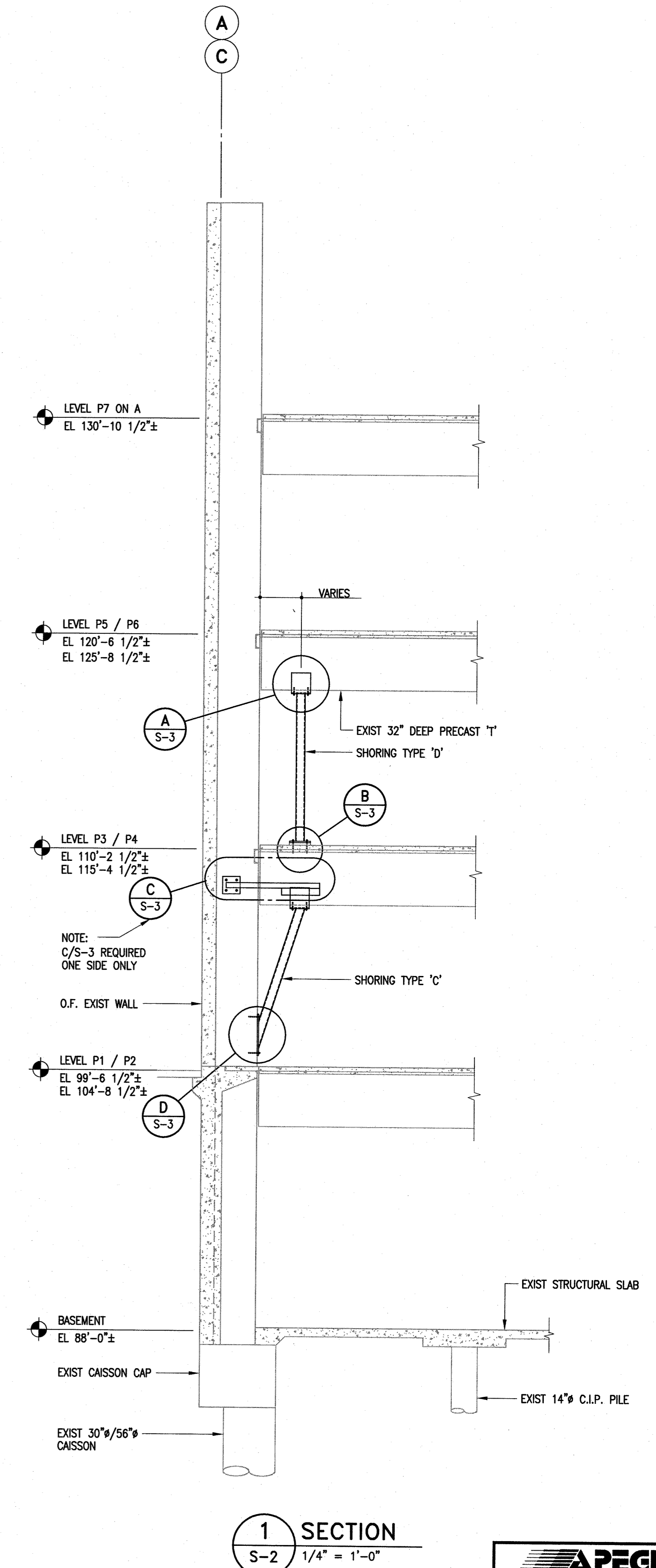
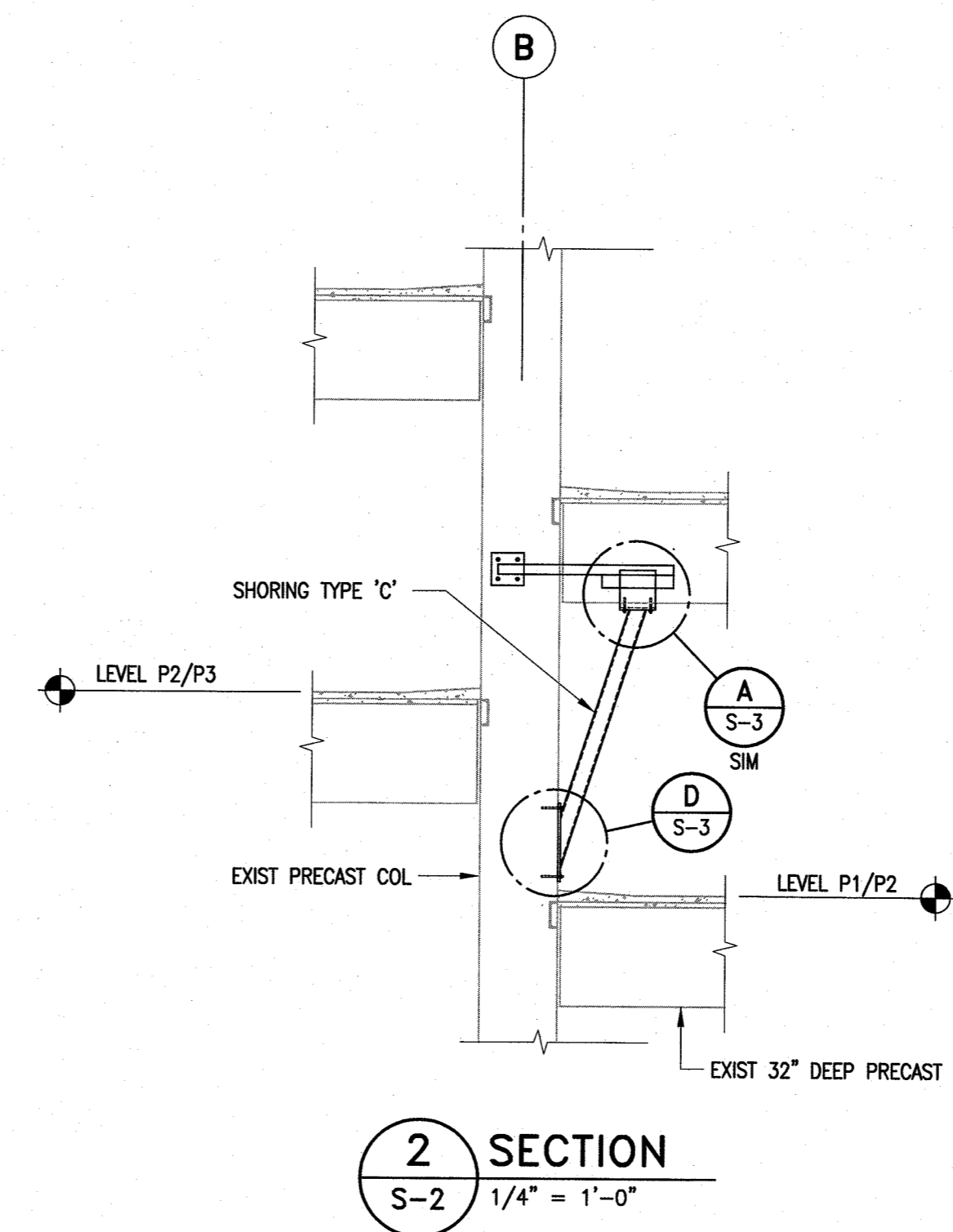


**LEVEL P1/P2 FLOOR PLAN**

1/16" = 1'-0"

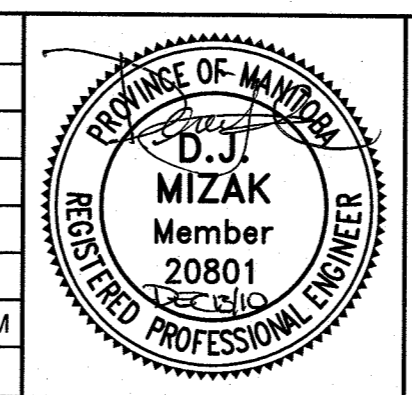
\* SHORING SHOWN ON FLOOR LAYOUT IS FOR SUPPORT OF PRECAST 'T' ON LEVEL ABOVE

SHORING LEGEND	
●	SHORING TYPE 'A' - U/S OF LEVEL P1 TO BASEMENT (SEE 1/S-1)
⊙	SHORING TYPE 'B' - U/S OF LEVEL P2 TO BASEMENT (SEE 2/S-1)
⊗	SHORING TYPE 'C' - U/S OF LEVEL P3/P4 TO LEVEL P1/P2 (SEE 1/S-2 & 2/S-2)
⊘	SHORING TYPE 'D' - U/S OF LEVEL P5/P6 TO LEVEL P3/P4 (SEE 1/S-2)
⊠	SADDLE BRACKET TYPE 'E' BOLTED TO EXISTING BEAM (SEE 3/S-1)
■	SADDLE BRACKET TYPE 'F' BOLTED TO EXISTING BEAM (SEE 5/S-1)
○	EXISTING SHORING



**APEGM**  
 Certificate of Authorization  
 Crosier Kilgour & Partners Ltd.  
 No. 235 Date: Dec 13, 2010

No.	Date	Issue/Revision	By
1	13 DEC 2010	ISSUED FOR CONSTRUCTION	DJM



300-275 Carlton Street  
 Winnipeg, Manitoba R3C 5R6  
 T 204. 943. 7501  
 F 204. 943. 7507

**Crosier Kilgour & Partners Ltd.**  
 CONSULTING STRUCTURAL ENGINEERS

The General Contractor shall check & verify all dimensions and report any errors or omissions to the designers.

Project  
**CIVIC CENTRE CAR PARK SHORING INSTALLATION**  
 171 PRINCESS STREET  
 WINNIPEG, MANITOBA

Sheet Title						Sheet No.
LEVEL P1/P2 FLOOR PLAN, SECTIONS AND DETAILS						S-2
Design	Drawn	Checked	Scale	Date	File	
RDM	JLP	DJM	AS NOTED	13 DEC 2010	2010-1074	