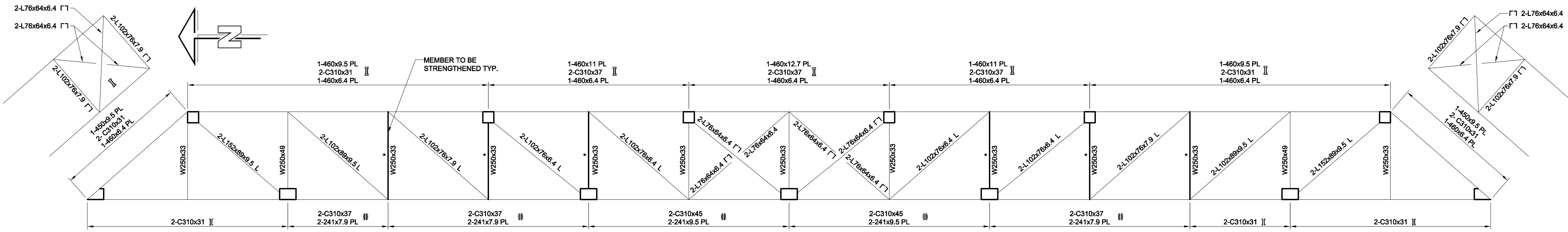


D SIZE 22" x 34" (559mm x 864mm)

PLOT: 11/05/11 9:57:48 AM

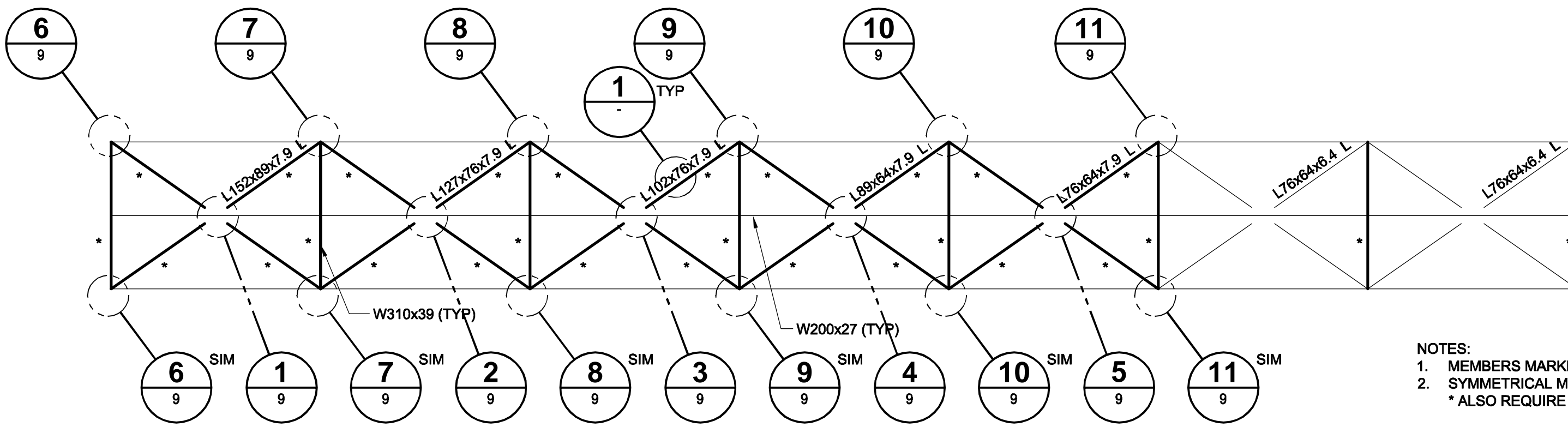
AECOM REVIEW DRFT CHK AECOM FILE NAME: D265-230-02_01-S-4002_RX.dwg Saved By: demoutdemw



ELEVATION OF SIDE TRUSSES

SCALE 1:120

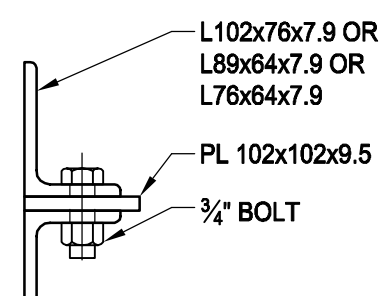
NOTE: MEMBERS MARKED WITH * REQUIRE STRENGTHENING



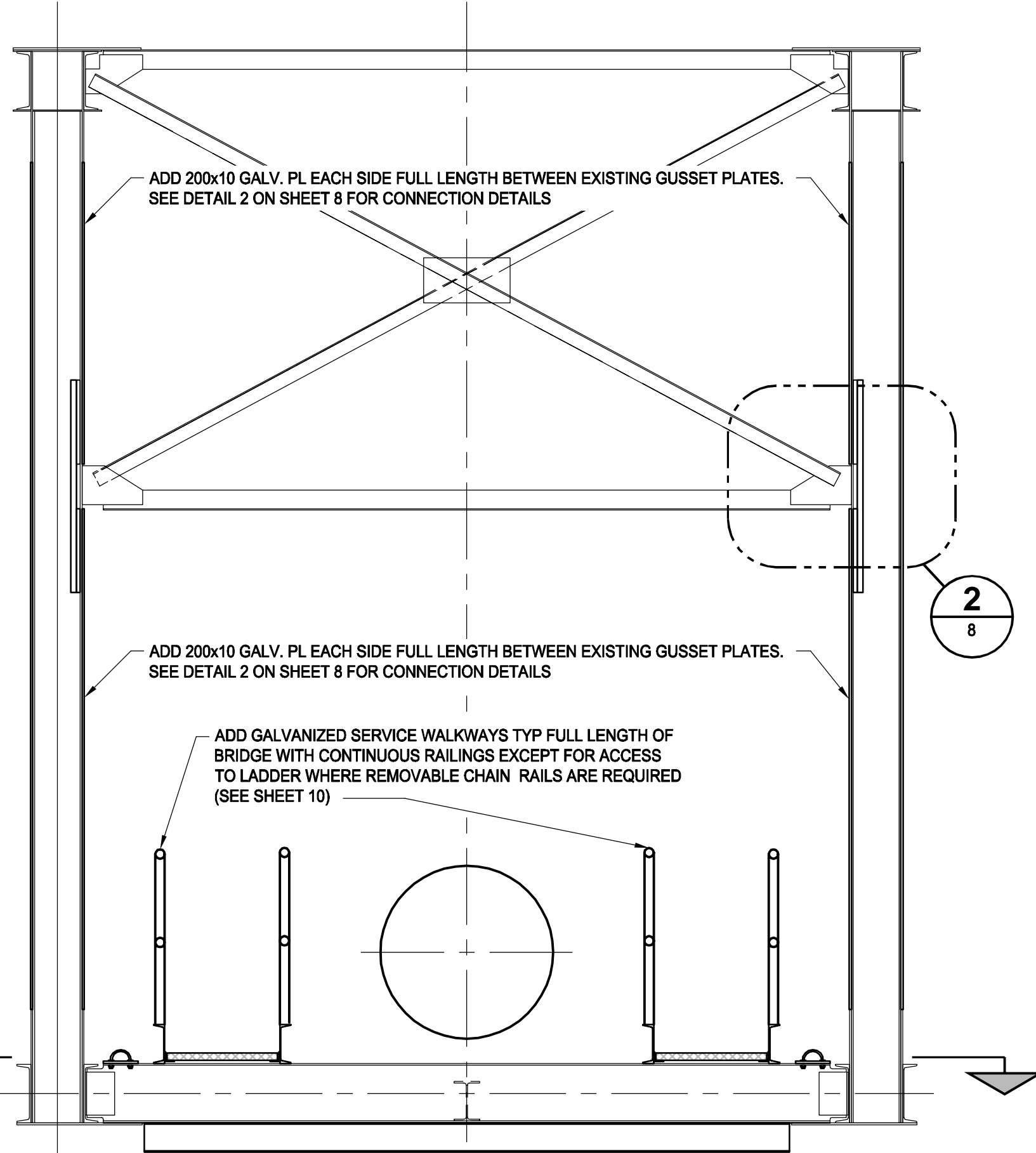
HALF PLAN OF BOTTOM CHORD LATERALS

SCALE 1:120

NOTES:
 1. MEMBERS MARKED WITH * REQUIRE STRENGTHENING
 2. SYMMETRICAL MEMBERS TO MEMBERS MARKED WITH * ALSO REQUIRE SAME STRENGTHENING



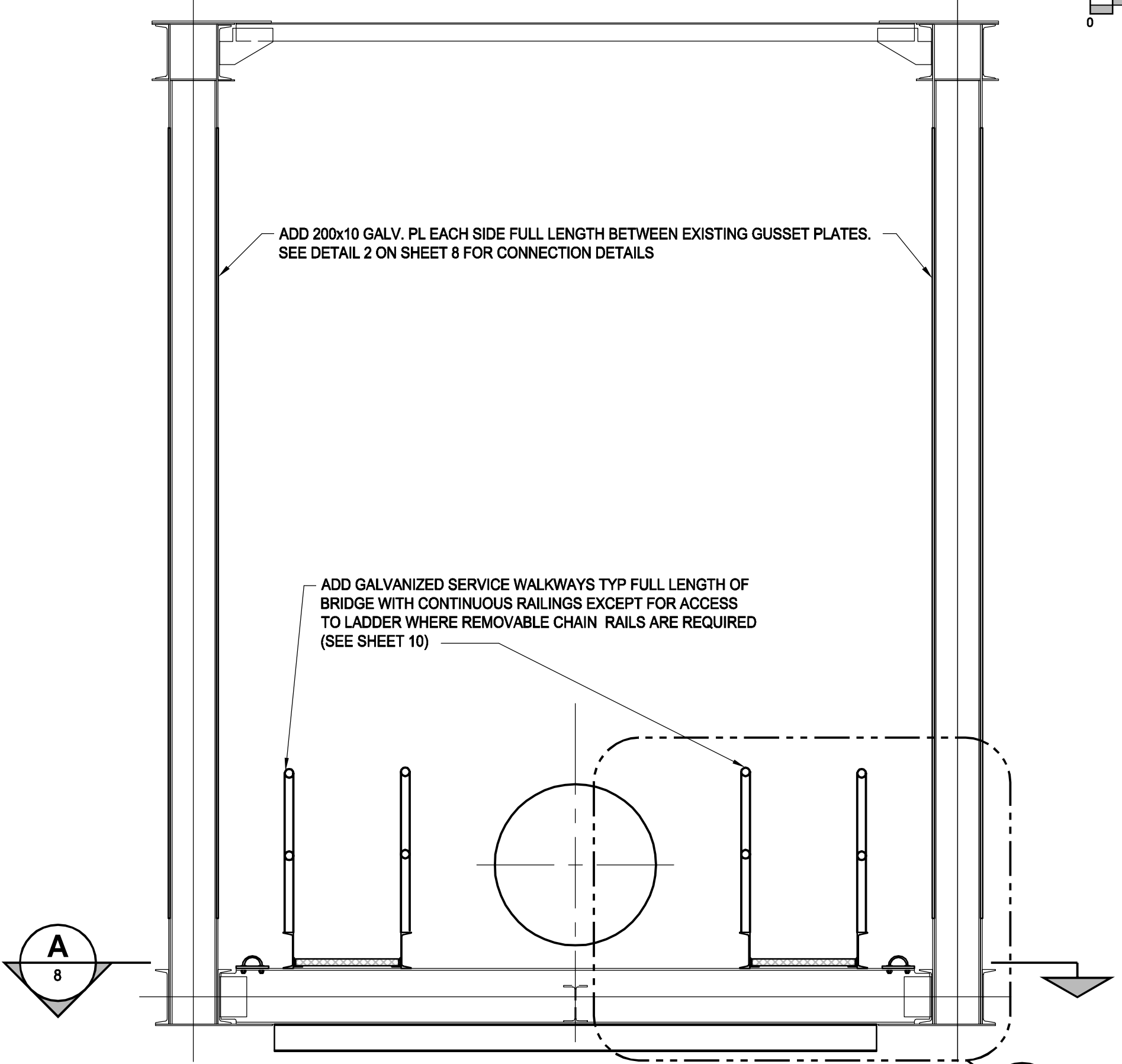
DETAIL 1
SCALE: NTS



TYPICAL BRIDGE SECTION

SCALE 1:25

WHERE VERTICAL MEMBERS ARE TO BE STRENGTHENED (WITH LATERAL SWAY BRACING)



TYPICAL BRIDGE SECTION

SCALE 1:25

WHERE VERTICAL MEMBERS ARE TO BE STRENGTHENED (WITHOUT LATERAL SWAY BRACING)

- GENERAL NOTES:**
- ALL STEEL SHALL CONFORM TO CSA-G40.21-04, GRADE 350 WT. CATEGORY 3 AND SHALL BE GALVANIZED TO CSA G164-M92 "HOT DIP GALVANIZING OF IRREGULARLY SHAPED ARTICLES" AFTER FABRICATION.
 - PREPARE SURFACES AND ZINC METALIZE ALL STEEL MEMBERS EXCEPT NEW MEMBERS THAT ARE ALREADY HOT-DIPPED GALVANIZED.
 - TOUCH UP ANY DAMAGED GALVANIZING OR METALIZING WITH ZINGA, ZINC METALIZING OR ACCEPTED EQUAL.
 - PERMANENT BOLTS SHALL BE A325 TYPE 1 AND SHALL BE GALVANIZED. BOLT THREADS SHALL BE EXCLUDED FROM THE SHEAR PLANES OF ANY SURFACES.
 - ALL WELDING SHALL BE IN ACCORDANCE WITH CSA W59-03 "WELDED STEEL CONSTRUCTION".
 - FABRICATORS SHALL BE CERTIFIED IN ACCORDANCE WITH CSA W47.1-03 "CERTIFICATION OF COMPANIES FOR FUSION WELDING OF STEEL STRUCTURES".
 - THE CONTACT SURFACES OF BOLTED PARTS SHALL BE HOT DIP GALVANIZED OR ZINC METALIZED AND THEN HAND WIRE BRUSHED.
 - OBTAIN CONTRACT ADMINISTRATOR'S APPROVAL PRIOR TO MAKING ANY MEMBER SUBSTITUTIONS OR CONNECTION DETAIL CHANGES.
 - WHERE EXISTING RIVETS ARE TO BE REMOVED, THEY SHALL BE REMOVED BY MECHANICAL MEANS ONLY. NO HEAT SHALL BE APPLIED TO THE RIVETS UNLESS APPROVED BY THE CONTRACT ADMINISTRATOR.
 - ACCESS AND LAY DOWN AREA TO BE APPROVED BY CONTACT ADMINISTRATOR
 - ALL DIMENSIONS SHOWN ON THESE DRAWINGS ARE BASED ON AVAILABLE INFORMATION. CONTRACTOR SHALL FIELD MEASURE AND VERIFY ALL DETAILS AND DIMENSIONS. THE CONTRACTOR SHALL REPORT ANY DISCREPANCIES TO THE CONTRACTOR ADMINISTRATOR PRIOR TO COMMENCING WORK

APEGM
 Certificate of Authorization
 AECOM Canada Ltd.
 No. 4671 Date: 11/05/09

LOCATION APPROVED UNDERGROUND STRUCTURES	
SUPR. U/G STRUCTURES COMMITTEE	DATE
NOTE: LOCATION OF UNDERGROUND STRUCTURES AS SHOWN ARE BASED ON THE BEST INFORMATION AVAILABLE. BUT NO GUARANTEE IS GIVEN THAT ALL EXISTING UTILITIES ARE SHOWN OR THAT THE GIVEN LOCATIONS ARE EXACT. CONFIRMATION OF EXISTENCE AND EXACT LOCATION OF ALL SERVICES MUST BE OBTAINED FROM THE INDIVIDUAL UTILITIES BEFORE PROCEEDING WITH CONSTRUCTION.	
0	ISSUED FOR CONSTRUCTION 11/05/09 KC
NO.	REVISIONS YYMMDD BY

AECOM	
DESIGNED BY FT/ARB	CHECKED BY SBB/KC
DRAWN BY DJH	APPROVED BY EBL
HOR. SCALE AS NOTED	RELEASED FOR CONSTRUCTION
VERT. SCALE AS NOTED	K. Zurek
DATE	DATE May 11/11

PROFESSIONAL'S SEAL
 REVISION '0'
 Issued For Construction
 Sealed By:
 S. B. BISWANGER
 May 9 2011
 CONSULTANT DRAWING NO.
 D265-230-02_01-S-4002_RX.dwg

THE CITY OF WINNIPEG
 WATER AND WASTE DEPARTMENT
REHABILITATION / REPLACEMENT OF THE MID TOWN FEEDERMAIN AT THE ASSINBOINE RIVER
 STRUCTURAL
 LAYOUT FOR BRIDGE STRENGTHENING / MODIFICATIONS

SHEET 7 OF 18
 CITY DRAWING NUMBER
D-12233
 REV 0

BID OPPORTUNITY NO. 854-2010