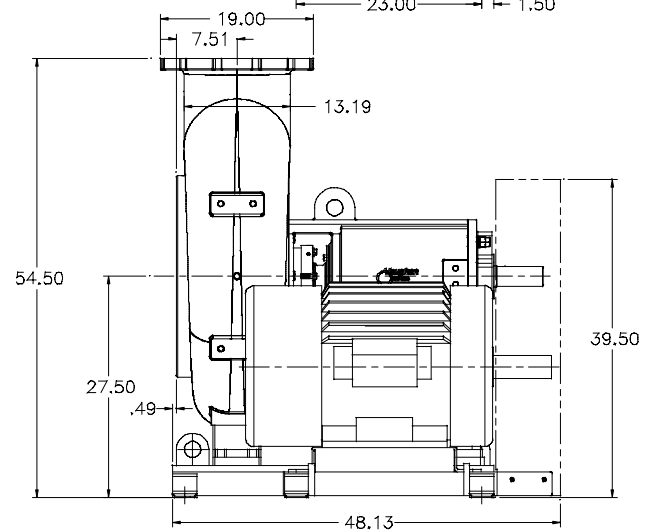
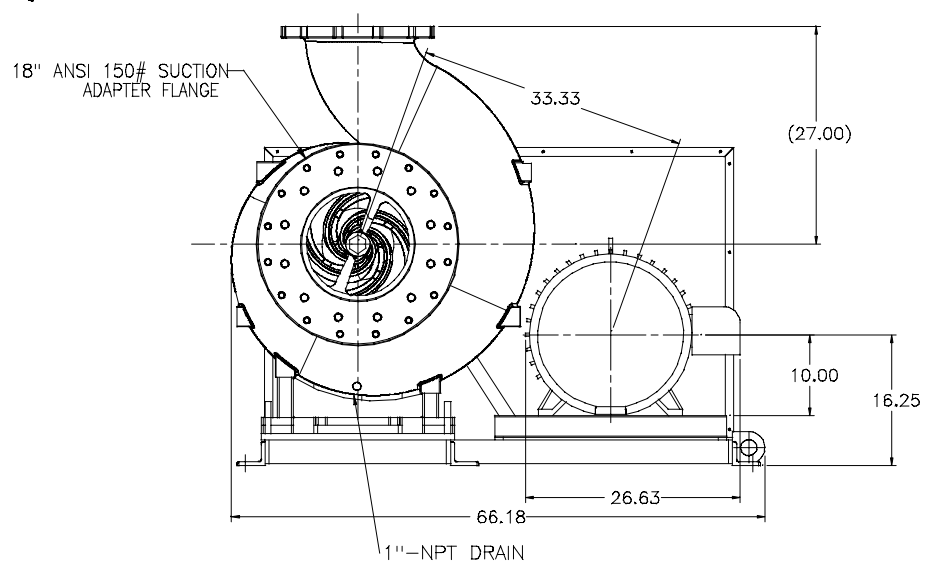
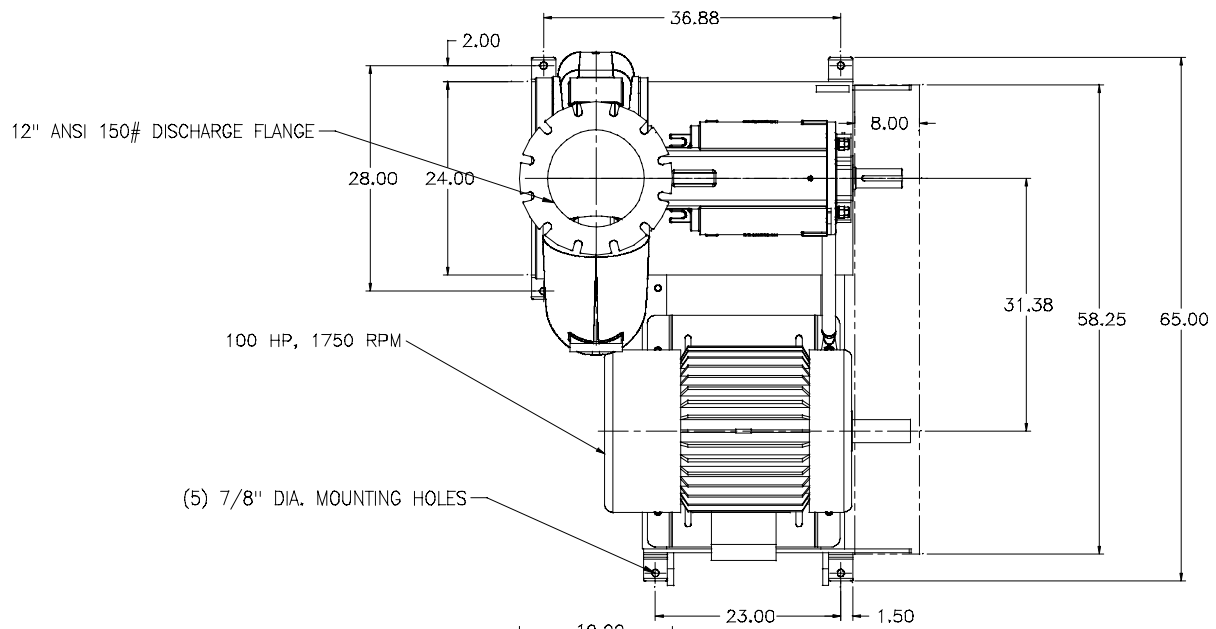


NOTES:

1. PUMP RPM = RPM
2. PUMP PERFORMANCE
GPM@ FT. TOTAL HEAD.
4. BELT DRIVE CONSISTS OF:
MOTOR SHEAVE:
PUMP SHEAVE:
BELTS:
5. FINISH: SSPC-SP2 CLEANING AND COAT W/ VAUGHAN
GREEN EPOXY SYSTEM.
6. WEIGHTS: PUMP & BASE 3500 LB
MOTOR: LB
TOTAL LB
7. 1"-NPT DRAIN REQUIRED IN CASING
8. MECHANICAL SEAL TO BE VAUGHAN FLUSHLESS CARTRIDGE SEAL.



	VAUGHAN CO., INC. 354 MONTE-ELIA ROAD MONTICELLO, VA 22861 PHONE (540) 248-4642 FAX (540) 248-6155	TRUCK OUTLINE DIMENSIONS HE12V18CSB-
	THIS DRAWING IS THE PROPERTY OF VAUGHAN COMPANY INC. IT IS FURNISHED FOR YOUR CONSIDERATION. INFORMATION PURPOSES ONLY, AND IS NOT TO BE DISCLOSED TO ANYONE ELSE OR REPRODUCED OR USED FOR MANUFACTURING PURPOSES WITHOUT THE EXPRESS WRITTEN CONSENT OF VAUGHAN COMPANY INC.	
THIS DRAWING IS A PRELIMINARY DRAWING AS SUCH IT IS A PRELIMINARY DRAWING AND IT SHOULD NOT BE USED FOR CONSTRUCTION PURPOSES.	VAUGHAN BLUE PRINT JOB ORDER NUMBER DATE	LOCATION VAUGHAN QUOTATION NUMBER