

Ref. of Drawing No. 129-D-5
NER 394
 DETAILS GAS RECIRCULATION SYSTEM
 DISCHARGE PIPING

NOTE:
 PIPING & SUPPORTS SHOWN
 IN TANK No. 9. PIPING & SUPPORTS
 ARE THE SAME IN TANK #10, 11, & 12

5- 2 1/2" φ GAS LINES
 WITH DISCHARGE POINTS
 34'-0" FROM C. OF DIGESTER
 EACH 72° APART

1- 2 1/2" φ GAS LINE
 WITH DISCHARGE POINT
 NEAR CENTER OF DIGESTER

2 1/2" PIPE CLAMPS USED @
 ALL PIPE SUPPORTS & @
 WALL. SEE PIPE CLAMP DETAIL

SUPPORTS ON 8'
 CENTERS. SEE
 CONTRACT DWG. 138

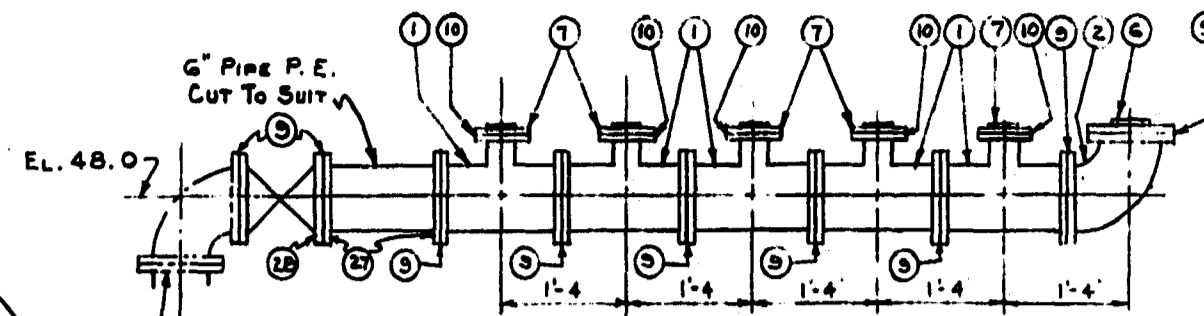
NEW PRIMARY
 TANK No. 9

NEW PRIMARY
 TANK No. 10

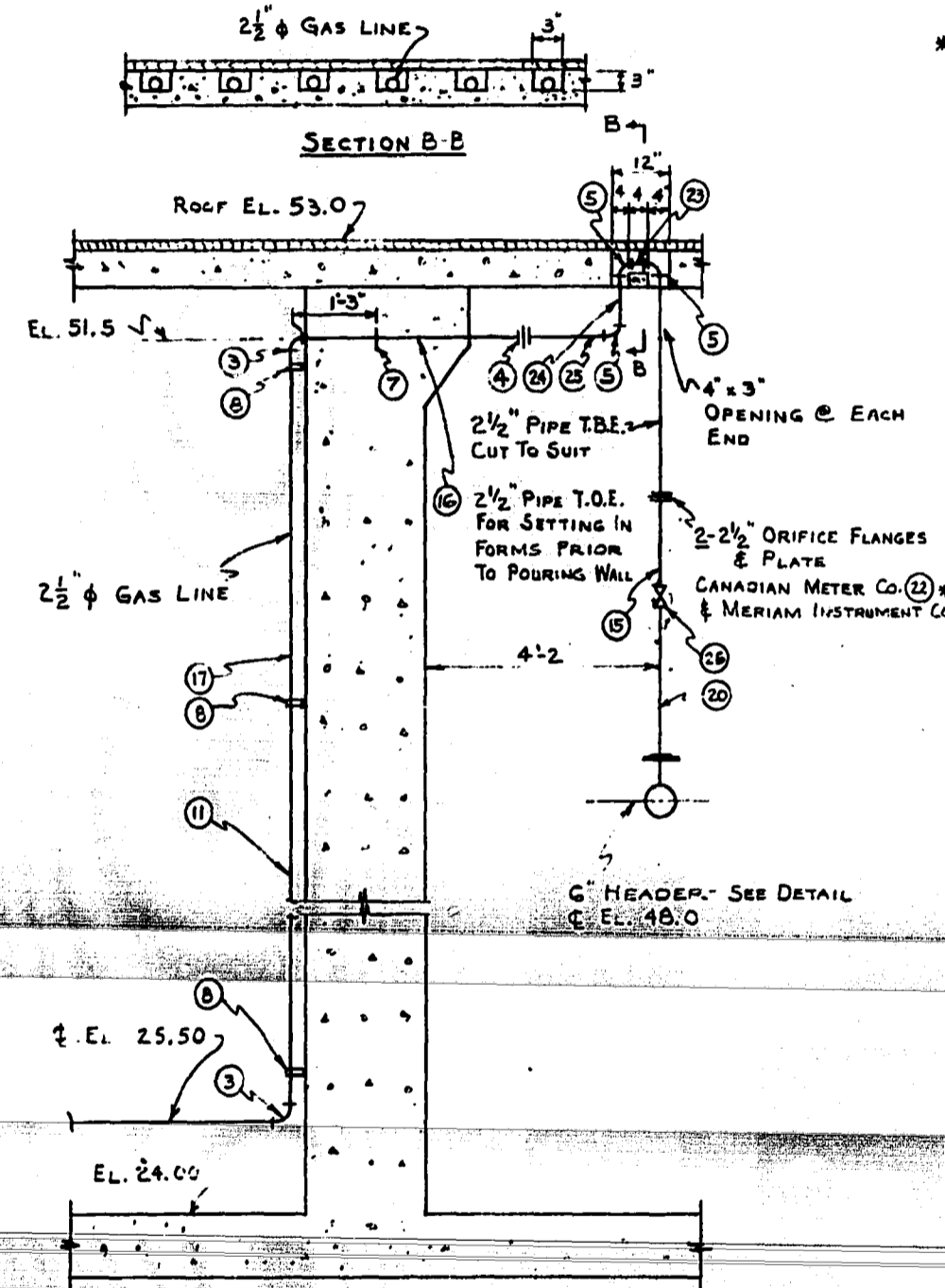
NEW PRIMARY
 TANK No. 11

NEW PRIMARY
 TANK No. 12

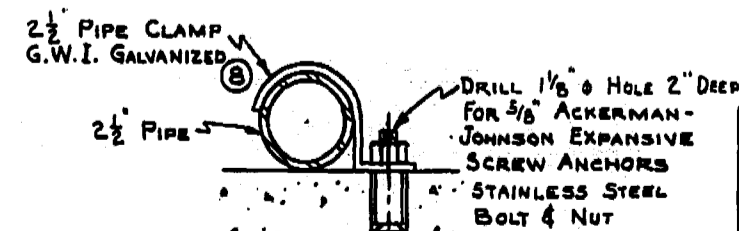
SCALE: 1" = 16'-0"



HEADER DETAIL
 4 REQUIRED
 SCALE: 3/4" = 1'-0"



SECTION A-A
 TYPICAL ELEVATION @ WALL
 SCALE: 1/2" = 1'-0"



DETAIL OF
 PIPE CLAMP
 SCALE: 3" = 1'-0"

NO.	DESCRIPTION	NO. REQ'D.
1	6" x 6" x 2 1/2" REDUCING TEE	20
2	6" - 90° ELBOW	4
3	2 1/2" - 90° LONG RADIUS BUTT WELDING ELBOW	48
4		24
5	2 1/2" - 90° ELBOW - BLK. M. I.	72
6	2 1/2" x 11" O.D. REDUCING SLIP-ON WELDING FLANGE	4
7	2 1/2" SLIP-ON WELDING FLANGE	44
8	2 1/2" PIPE CLAMP WITH EXPANSIVE SCREW ANCHORS	256
9	GASKET 6" x 11" x 1/16"	36
10	GASKET 2 1/2" x 7" x 1/16"	20
11	2 1/2" x 20'-0" LG. PIPE P.E.	88
12	2 1/2" x 14'-8" " " " "	4
13	2 1/2" x 14'-2" " " " "	4
14	2 1/2" x 9'-8" " " " "	4
15	2 1/2" x 2'-0" " " T.B.E.	24
16	2 1/2" x 4'-3" " " T.O.E. (SEE NOTE)	24
17	2 1/2" x 5'-4 1/2" " " P.E.	24
18	2 1/2" x 4'-8" " " " "	4
19	2 1/2" x 2'-8" " " " "	4
20	2 1/2" x 1'-0" " " T.O.E.	24
21	2 1/2" x 2" LG. PIPE P.E.	4
22	2 1/2" ORIFICE FLANGE & PLATE	24
23	2 1/2" x 4 1/2" LG. PIPE T.B.E.	24
24	2 1/2" x 10" " " " "	24
25	2 1/2" x 1'-0" " " " "	24
26	2 1/2" VALVE	24
27	6" SLIP-ON WELDING FLANGE	8
28	6" VALVE	4
29		
30		
31		
32		

NOTES:
 ALL PIPE TO BE BLACK GENUINE WROUGHT IRON STANDARD. (WELDING CONNECTIONS ONLY WITHIN THE DIGESTERS)
 * TO BE FURNISHED BY HANKIN. ALL OTHER ITEMS TO BE FURNISHED BY OTHERS.
 10" GAS SUCTION LINE AT TOP OF TANK NOT SHOWN.
 (16) 2 1/2" SLIP-ON FLANGE (7) TO BE TACK WELDED IN PLACE AFTER INSTALLING PIPE & FLANGE IN FORM.

NER-394
 MICROFILMED

REVISIONS			
DATE	DESCRIPTION	BY	APPROVED
3-26-64	Changes As Requested By Engr.	J.P.	

129-D-5

PACIFIC TANK & COMPANY
 CHICAGO NEW YORK

GAS RECIRCULATION SYSTEM
 DISCHARGE PIPING
 FOR: WINNIPEG, MANITOBA

SCALE As SHOWN DATE 12 Nov. 1963
 DRAWN BY J.P.
 CHECKED BY [Signature] No. 4-D-3404