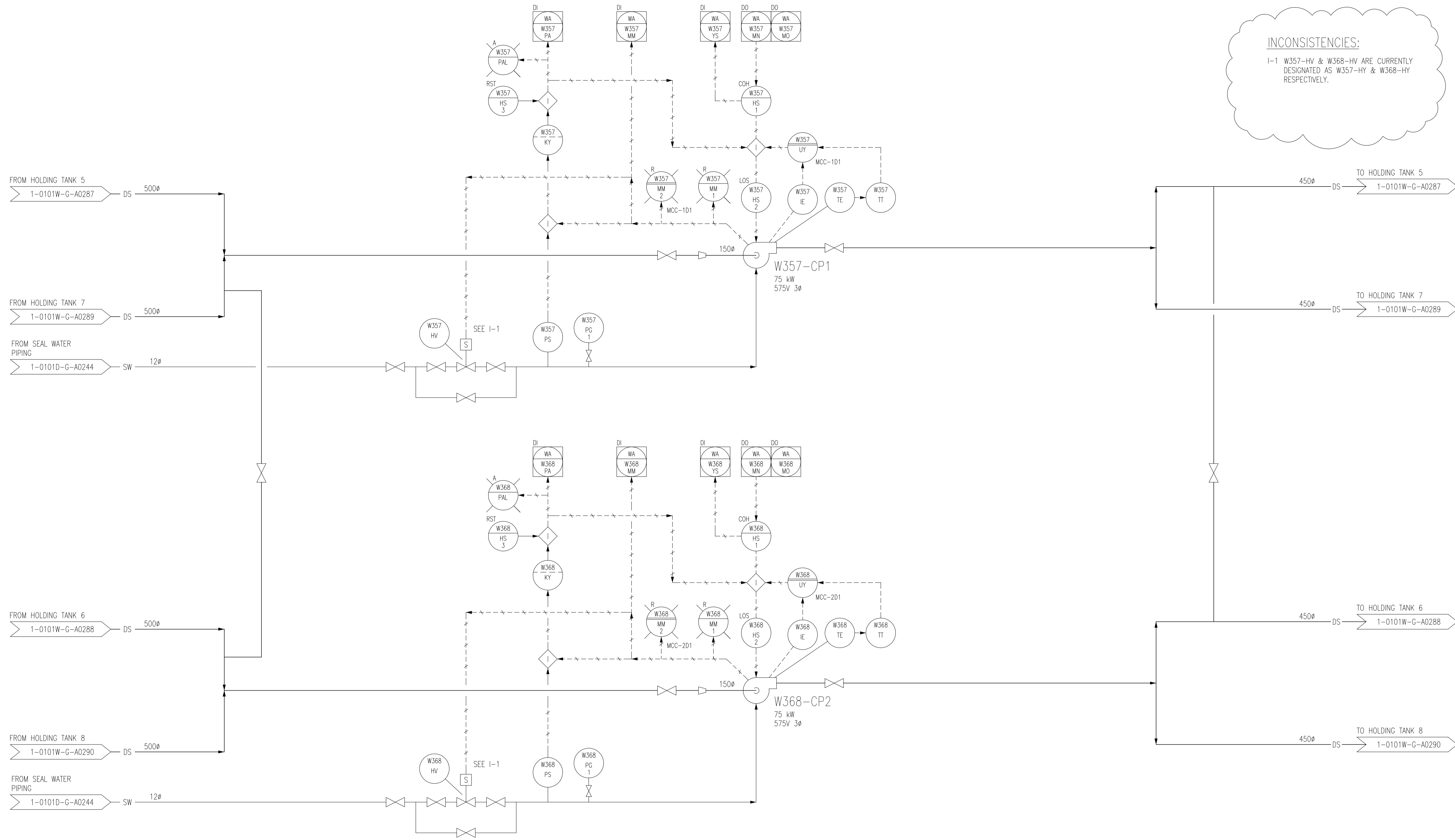


INCONSISTENCIES:
 I-1 W357-HV & W368-HV ARE CURRENTLY DESIGNATED AS W357-HY & W368-HY RESPECTIVELY.



LAST SAVE: 2008/01/28 - 11:18am
 PATH: R:\DRAWINGS\NEWPPCC\DRAWINGS\1-0101W-G-A0291-001-02D.dwg

1-0101A-D-A0001	PROCESS AND INSTRUMENT DIAGRAMS LEGEND AND DETAILS
DRAWING NUMBER	REFERENCE DRAWINGS

B.M. ELEV.	FIELD BOOK #:	SNC-LAVALIN Engineers & Constructors		SNC-LAVALIN 200-1600 Ness Avenue Winnipeg, Manitoba Canada R3C 3W7	
POSTED TO LBIS		DESIGNED BY	EXISTING	CHECKED BY	CJR
		DRAWN BY	DAS	APPROVED BY	EMR
02	RENUMBERED FACILITY CODE	2005/10/06	CJR	HOR. SCALE	NTS
01	ISSUED FOR C.O.W. USE	2005/09/15	CJR	VERTICAL	RELEASED FOR CONSTRUCTION
00	RELEASED FOR CUSTOMER REVIEW	2005/08/22	CJR	DATE	2004/11/03
NO.	REVISIONS	DATE	BY	DATE	
FILENAME: 1-0101W-G-A0291-001-02D.dwg					

ENGINEER'S SEAL

THE CITY OF WINNIPEG
 WATER AND WASTE DEPARTMENT

NORTH END WATER POLLUTION CONTROL CENTRE
 DEWATERING
 PROCESS & INSTRUMENTATION DIAGRAM
 HOLDING TANK CIRCULATION PUMPS
 W357-CP1 & W368-CP2

CITY DRAWING NUMBER	SHEET	REV.	SIZE
1-0101W-G-A0291	001	02	D