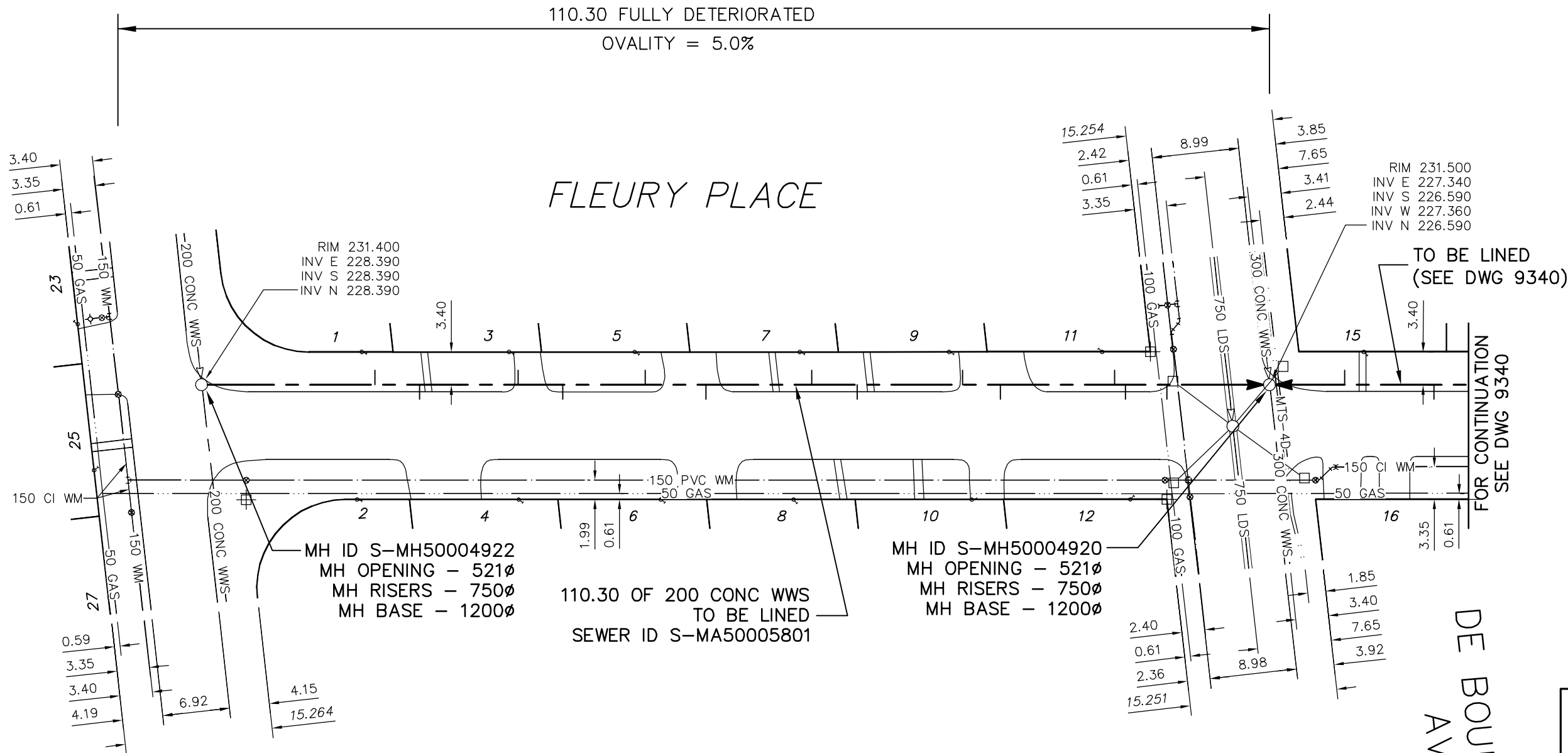




110.30 FULLY DETERIORATED
OVALITY = 5.0%

FLEURY PLACE

FONTAINE CR
(W LEG)



TO BE LINED
(SEE DWG 9340)

FOR CONTINUATION
SEE DWG 9340

DE BOURMONT
AVE

SEWER JUNCTION INFORMATION
FROM SEWER VIDEO INSPECTION
SEWER ID S-MA50005801

DISTANCE FROM MH ID S-MH50004922				
17.9	E	150φ	NORTH	CXI
22.5	E	150φ	SOUTH	JN
32.7	E	150φ	NORTH	JN
37.3	E	150φ	SOUTH	JN
45.8	E	150φ	NORTH	CXI
52.1	E	150φ	SOUTH	JN
63.0	E	150φ	NORTH	JN
67.7	E	150φ	SOUTH	JN
78.6	E	150φ	NORTH	JN
82.5	E	150φ	SOUTH	JN
94.3	E	150φ	NORTH	JN
95.4	E	150φ	SOUTH	JN
99.7	E	150φ	SOUTH	JN

LEGEND:

52.0 | MEASUREMENT TO REPAIR FROM REFERENCE MH SHOWN THUS...

METRIC
WHOLE NUMBERS INDICATE MILLIMETRES
DECIMALIZED NUMBERS INDICATE METRES

ENGINEER'S SEAL

ORIGINAL SIGNED
BY
S.R.J.
COURNOYER
10/07/06

BID OPPORTUNITY: 525-2010
FILENAME : 9339.dwg
PLOT DATE : 2010 07 07

B.M. ELEV.	FIELD BOOK #	CITY OF WINNIPEG WATER AND WASTE ENGINEERING DIVISION		THE CITY OF WINNIPEG WATER AND WASTE DEPARTMENT	
POSTED TO LBIS		DESIGNED BY: SC	CHECKED BY: SC	2010 SEWER RENEWALS BY CIPP LININGS, CONTRACT 12	
		DRAWN BY: CJH	APPROVED BY: KZ	FLEURY PLACE	
		HOR. SCALE: 1:500	RELEASED FOR CONSTRUCTION: KAS ZUREK	MH AT FONTAINE CRESCENT (W LEG) TO MH AT DE BOURMONT AVENUE	
		DATE: 2010 07 06	DATE: 2010 07 06	SHEET 40 OF 53 CITY DRAWING NUMBER 9339	