

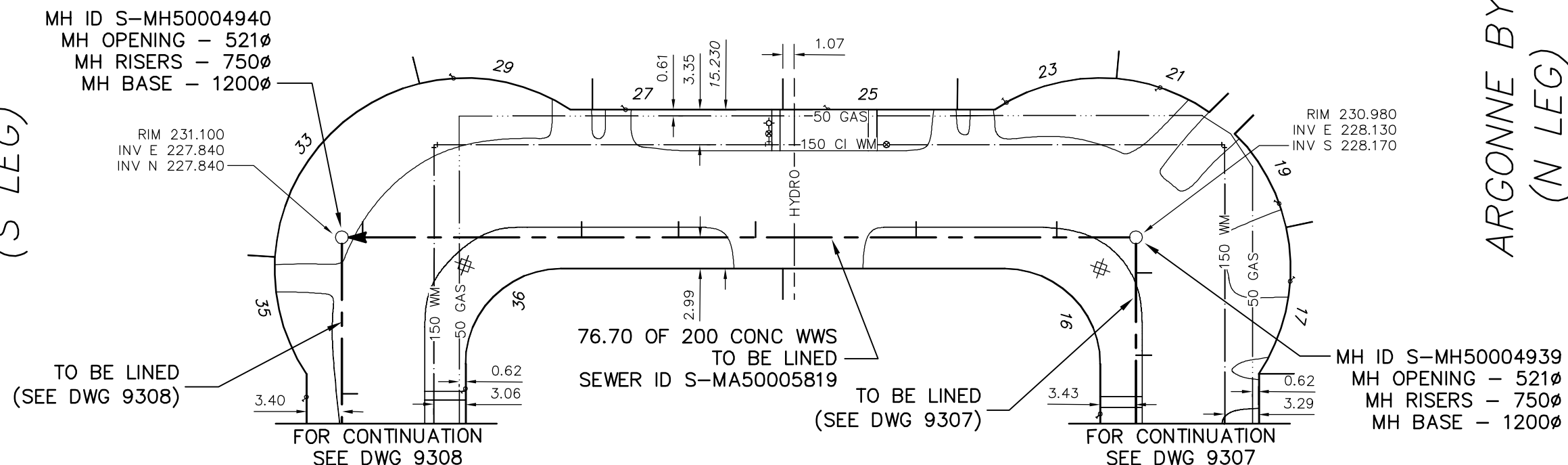


76.70 PARTIALLY DETERIORATED
 OVALITY = 3.0%

ARGONNE BAY (W LEG)

ARGONNE BY
 (S LEG)

ARGONNE BY
 (N LEG)



MH ID S-MH50004940
 MH OPENING - 521ø
 MH RISERS - 750ø
 MH BASE - 1200ø

RIM 231.100
 INV E 227.840
 INV N 227.840

RIM 230.980
 INV E 228.130
 INV S 228.170

TO BE LINED
 (SEE DWG 9308)

TO BE LINED
 (SEE DWG 9307)

MH ID S-MH50004939
 MH OPENING - 521ø
 MH RISERS - 750ø
 MH BASE - 1200ø

FOR CONTINUATION
 SEE DWG 9308

FOR CONTINUATION
 SEE DWG 9307

76.70 OF 200 CONC WWS
 TO BE LINED
 SEWER ID S-MA50005819

SEWER JUNCTION INFORMATION FROM SEWER VIDEO INSPECTION SEWER ID S-MA50005819				
DISTANCE FROM MH ID S-MH50004939				
7.6	S	150ø	WEST	CN
21.1	S	150ø	WEST	CNI
36.5	S	150ø	WEST	CNI
43.9	S	150ø	WEST	JN
53.2	S	150ø	WEST	JN
74.2	S	150ø	WEST	JN

ENGINEER'S SEAL

ORIGINAL SIGNED
 BY
 S.R.J.
 COURNOYER
 10/07/06

BID OPPORTUNITY: 525-2010
 FILENAME : 9306.dwg
 PLOT DATE : 2010 07 07

LEGEND:
 52.0 | MEASUREMENT TO REPAIR FROM REFERENCE MH SHOWN THUS... 0.0

METRIC
 WHOLE NUMBERS INDICATE MILLIMETRES
 DECIMALIZED NUMBERS INDICATE METRES

B.M. ELEV.	FIELD BOOK #:	CITY OF WINNIPEG WATER AND WASTE ENGINEERING DIVISION		THE CITY OF WINNIPEG WATER AND WASTE DEPARTMENT	
POSTED TO LIS		DESIGNED BY: SC	CHECKED BY: SC	2010 SEWER RENEWALS BY CIPP LININGS, CONTRACT 12 ARGONNE BAY (W LEG)	
		DRAWN BY: CJH	APPROVED BY: KZ	MH AT ARGONNE BAY (N LEG) TO MH AT ARGONNE BAY (S LEG)	
		HOR. SCALE: 1:500	RELEASED FOR CONSTRUCTION: KAS ZUREK	SHEET 7 OF 53	
		VERTICAL	DATE: 2010 07 06	CITY DRAWING NUMBER 9306	
NO.	REVISIONS	DATE	BY		