

WARNING
 IF POWER EQUIPMENT OR EXPLOSIVES ARE TO BE USED FOR EXCAVATION ON THIS PROJECT THE CONTRACTOR MUST:
 1) NOTIFY THE GAS COMPANY OF THE PROPOSED LOCATION OF EXCAVATION.
 2) TAKE PRECAUTION TO AVOID DAMAGE TO GAS COMPANY INSTALLATIONS.
 SEE PROVINCIAL REGULATION 140/92 FOR DETAILS

METRIC
 WHOLE NUMBERS INDICATE MILLIMETRES
 DECIMALIZED NUMBERS INDICATE METRES

EXISTING	LEGEND-PLAN	PROPOSED	EXISTING	LEGEND-PLAN	PROPOSED	EXISTING	LEGEND-PROFILE	PROPOSED
150 WM	WATERMAIN	150 WM	HYDRO	---	---	150 WM	WATERMAIN	150 WM
300 LDS	LAND DRAINAGE SEWER	300 LDS	M.T.S.	---	---	300 LDS	HYDRANT, VALVE	300 LDS
250 WWS	WASTE WATER SEWER	250 WWS	CONCRETE	---	---	250 WWS	LAND DRAINAGE SEWER	250 WWS
○	MANHOLE	●	SIDEWALK - ASPHALT	▨	▨	○	WASTE WATER SEWER	○
□	CATCH BASIN	■	SIDEWALK - CONCRETE	▩	▩	□	PROPERTY LINE	□
▽	CURB INLET	⊕	SIDEWALK - REMOVAL	▧	▧	▽	SURVEY BAR	▽
+	JUNCTIONS	+	ELEVATION	(32.23)	(32.23)	+	DITCH	+
▬	CULVERT	▬	SIDEWALK RAMP	▬	▬	▬	NORTH OR WEST DITCH	▬
---	GAS	---	---	---	---	---	NORTH OR WEST R	---
---	---	---	---	---	---	---	SOUTH OR EAST R	---
---	---	---	---	---	---	---	NORTH OR WEST DITCH	---
---	---	---	---	---	---	---	SOUTH OR EAST DITCH	---

LOCATION APPROVED UNDERGROUND STRUCTURES

SUPV. U/G STRUCTURES COMMITTEE DATE

NOTE:
 LOCATION OF UNDERGROUND STRUCTURES AS SHOWN ARE BASED ON THE BEST INFORMATION AVAILABLE BUT NO GUARANTEE IS GIVEN THAT ALL EXISTING UTILITIES ARE SHOWN OR THAT THE GIVEN LOCATIONS ARE EXACT. CONFIRMATION OF EXISTENCE AND EXACT LOCATION OF ALL SERVICES MUST BE OBTAINED FROM THE INDIVIDUAL UTILITIES BEFORE PROCEEDING WITH CONSTRUCTION.

NO.	REVISIONS	DATE	BY
1	ISSUED FOR TENDER	10.06.02	S.R.S.
0	ISSUED FOR REVIEW	10.05.28	S.R.S.

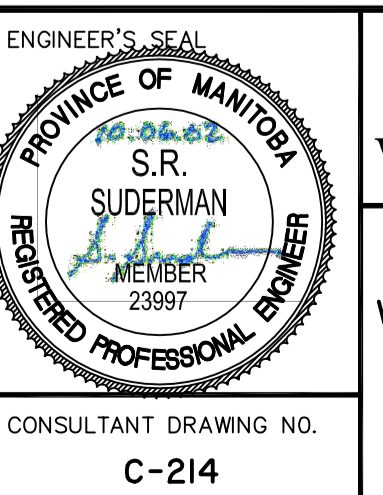
Stantec Consulting Ltd.
 905 Waverley Street, Winnipeg, Manitoba
 Tel 204-489-5900 Fax 204-453-9012

DESIGNED BY: S.R.S. CHECKED BY: V.M.M.
 DRAWN BY: T.G. APPROVED BY: S.R.S.

HOR. SCALE: 1:500
 VERTICAL: 1:20

RELEASED FOR CONSTRUCTION: DATE

DATE: 10.04.22



THE CITY OF WINNIPEG
 PUBLIC WORKS DEPARTMENT
 ENGINEERING DIVISION

DAKOTA/DUNKIRK PATHWAY-PHASE I
 WARDE AVENUE TO BISHOP GRANDIN BOULEVARD
 STA. 1+300 TO STA. 1+575

2010 ACTIVE TRANSPORTATION
 INFRASTRUCTURE STIMULUS PROGRAM

SHEET 6 OF 12
 CAD FILE DRAWING NUMBER 05260c-210-xxx.dwg
 CITY DRAWING NUMBER W-376-06

CONSULTANT DRAWING NO. C-214