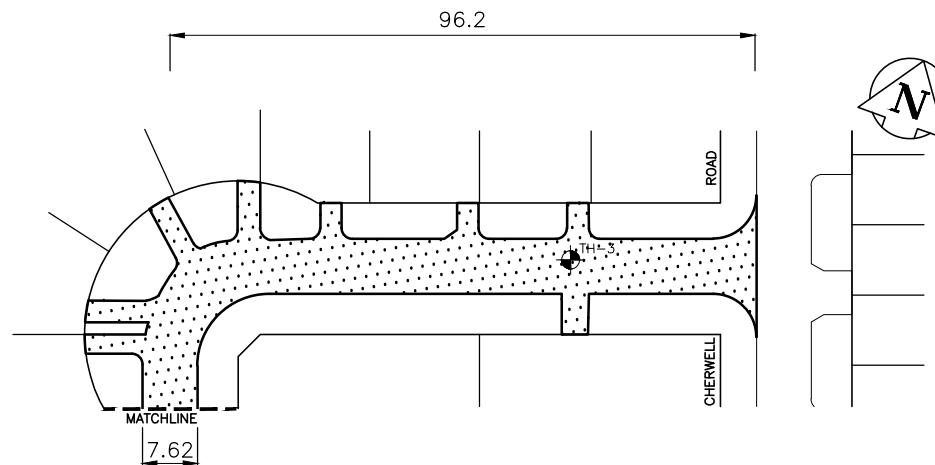
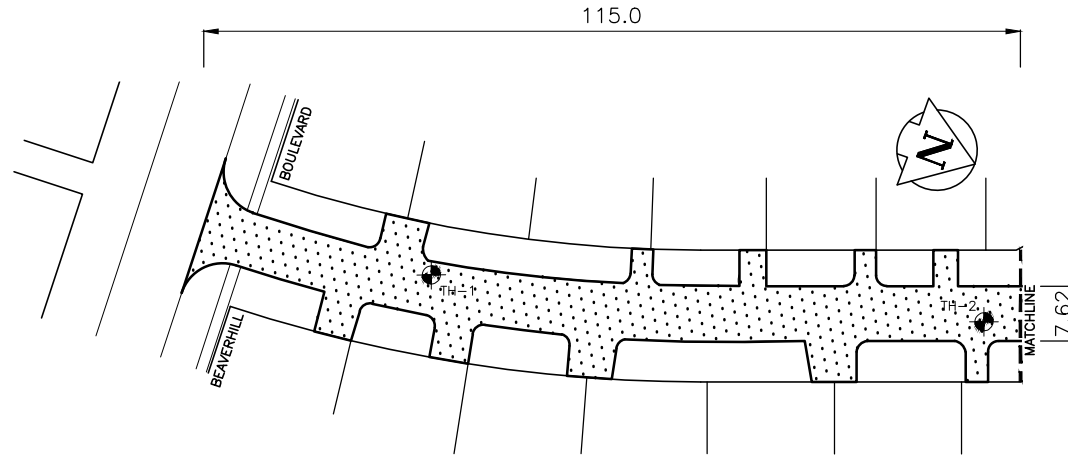



FARNHAM ROAD



PAVEMENT REHABILITATION INCLUDES:

1. PLANING OF CONCRETE AND/OR ASPHALT AS REQUIRED
2. FULL DEPTH SLAB PATCHING AS REQUIRED
3. CURB RENEWAL
4. ASPHALT OVERLAY

 10 PRAIRIE WAY WINNIPEG, MANITOBA R2J 3J8 PH: (204)-233-2113 FAX: (204)-233-2080		 THE CITY OF WINNIPEG PUBLIC WORKS DEPARTMENT ENGINEERING DIVISION	
DESIGNED BY P.R.	CHECKED BY S.M.	PROVINCE OF MANITOBA/CITY OF WINNIPEG	CITY DRAWING NO.
DRAWN BY P.R.	APPROVED BY S.M.	2010 RESIDENTIAL STREET RENEWALS	CONSULTANT DRAWING NO. 09-169-06
HOR. SCALE: N.T.S.	RELEASED FOR CONSTRUCTION	FARNHAM RD.	271-2010
VERT. SCALE: N.T.S.	DATE	FROM BEAVERHILL BLVD. TO CHERWELL RD. PAVEMENT REHABILITATION	