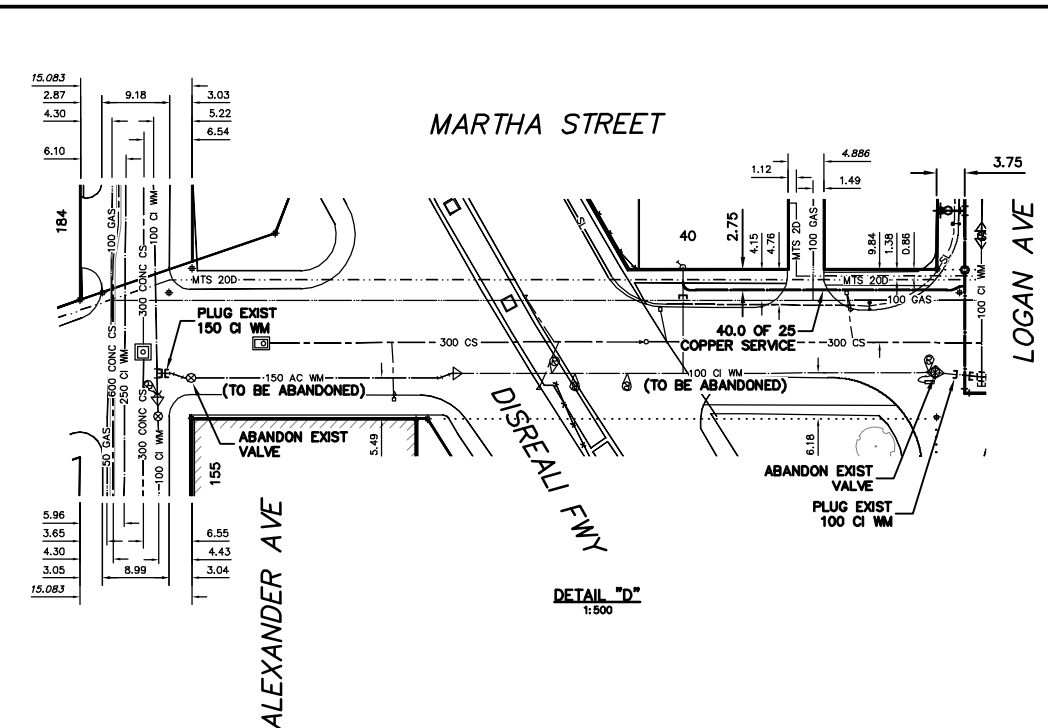


NOTE: CHAINAGES SHOWN ARE ALONG N P. OF LOGAN AVE



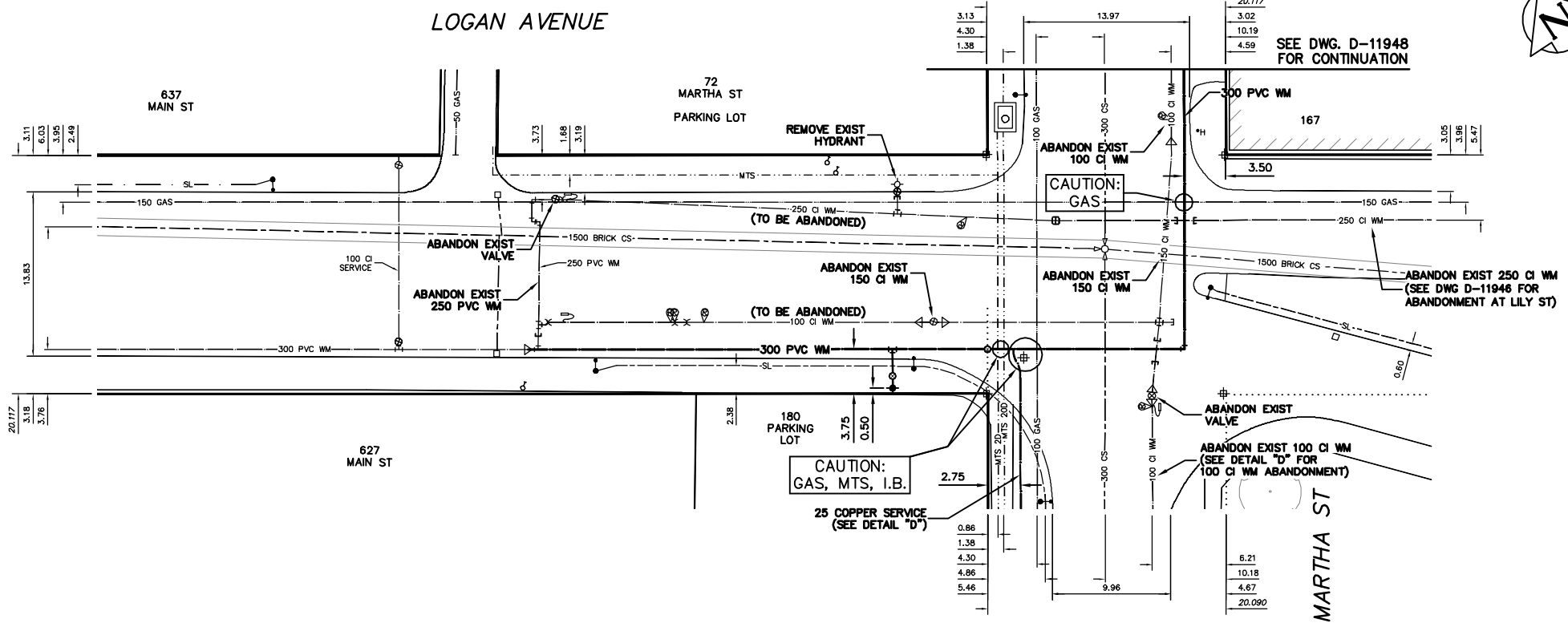
WATER SERVICE INFORMATION					
ADDRESS	SIZE (mm)	SIZE (mm) & TYPE (STREET) (PROP)	SHORT & LONG MEASUREMENT	CORP. LOCATION	REMARKS
167 LOGAN AVE COMMERCIAL	-	-	8.39 S OF N LOTUNE	-	RECONNECT SERVICE
180 LOGAN AVE PARKING LOT	-	-	22.26>NNL LOGAN	-	-
827 MAIN ST COMMERCIAL	150	100	5.33 EHL BLDG	OPP VALVE	SERVICED OFF LOGAN
827 MAIN ST COMMERCIAL	-	-	5.33 EEL MAIN	-	SERVICED OFF LOGAN
827 MAIN ST COMMERCIAL	-	-	7.65 WEL BLDG	-	SERVICED OFF LOGAN
827 MAIN ST COMMERCIAL	-	-	39.14 WEL MARTHA	-	SERVICED OFF LOGAN
827 MAIN ST COMMERCIAL	100	100	3.44 WEL LANE	OPP VALVE	SERVICED OFF LOGAN
827 MAIN ST COMMERCIAL	100	100	32.53 EEL MAIN	-	SERVICED OFF LOGAN
717 MAIN ST PARK FOUNTAIN	25	25	14.88>NNL HENRY	0.43 E OF S/C	SERVICED OFF HENRY
42 MARTHA ST RESIDENTIAL	20	20	3.22 NSL HSE	OPP S/C	RECONNECT SERVICE SEE DETAIL 'D'
55 MARTHA ST COMMERCIAL	-	-	7.25>NNL DISRAELI	-	-
72 MARTHA ST COMMERCIAL	38	38	18.36 NSL BLDG	2.0 N OF S/C	RECONNECT SERVICE
72 MARTHA ST COMMERCIAL	100	100	55.99>NNL LOGAN	OPP VALVE	RECONNECT SERVICE
72 MARTHA ST COMMERCIAL	AC	CI	59.91>NNL LOGAN	OPP S/C	RECONNECT SERVICE
75 MARTHA ST COMMERCIAL	38	38	19.41 SSL BLDG	OPP S/C	RECONNECT SERVICE
75 MARTHA ST COMMERCIAL	50	50	54.85>NNL LOGAN	OPP S/C	RECONNECT SERVICE
75 MARTHA ST COMMERCIAL	50	50	6.35 NSL BLDG	0.6 S OF S/C	RECONNECT SERVICE
180 HENRY AVE SPRINKLER	150	150	34.02 EEL MAIN	OPP VALVE	-
155 ALEXANDER AVE COMMERCIAL	50	50	46.32 WEL MARTHA	OPP S/C	SERVICED OFF ALEXANDER
155 ALEXANDER AVE COMMERCIAL	100	150	41.80 EEL MARTHA	OPP VALVE	SERVICED OFF ALEXANDER
155 ALEXANDER AVE COMMERCIAL	100	150	14.65 EEL MARTHA	OPP VALVE	SERVICED OFF ALEXANDER
155 ALEXANDER AVE COMMERCIAL	100	150	14.74 EEL MARTHA	OPP VALVE	SERVICED OFF ALEXANDER

\* SERVICES TO BE RENEWED TO P UPON CONFIRMATION BY THE CONTRACTOR OF EXISTING LEAD SERVICE. OBTAIN APPROVAL FROM CONTRACT ADMINISTRATOR PRIOR TO RENEWAL.

- CONSTRUCTION NOTES**
1. EXPOSE EXISTING WATERMAIN & CONFIRM INVERTS PRIOR TO CONSTRUCTION.
  2. CONFIRM LOCATION OF ALL SERVICES IN THE FIELD.
  3. INSTALL WATERMAIN BY TRENCHLESS METHODS.
  4. TRENCHES AND EXCAVATIONS WITHIN 1 METRE OF A PAVED AREA INCLUDING SIDEWALKS SHALL BE CLASS 3 BACKFILL.
  5. ALL MATERIALS SHALL CONFORM TO THE CITY OF WINNIPEG STANDARD CONSTRUCTION SPECIFICATIONS.
  6. MINIMUM COVER TO TOP OF WATERMAIN SHALL BE 2.4 m.
  7. REPLACE ALL EXISTING LEAD SERVICES FROM PROPOSED WATERMAIN TO P.
  8. NOTIFY ALL AFFECTED RESIDENTS AND BUSINESSES 24 HOURS IN ADVANCE OF ANY WATER SHUTDOWNS OR DISRUPTION OF SERVICE.
  9. LOGAN AVE. WEST BOUND LANE TO BE MILLED AND REPAVED THROUGHOUT CONSTRUCTION LIMITS.

**METRIC**  
WHOLE NUMBERS INDICATE MILLIMETRES  
DECIMALIZED NUMBERS INDICATE METRES

**WARNING**  
IF POWER EQUIPMENT OR EXPLOSIVES ARE TO BE USED FOR EXCAVATION ON THIS PROJECT THE CONTRACTOR MUST:  
1) NOTIFY THE GAS COMPANY OF THE PROPOSED LOCATION OF EXCAVATION.  
2) TAKE PRECAUTION TO AVOID DAMAGE TO GAS COMPANY INSTALLATIONS.  
SEE PROVINCIAL REGULATION 210/72 FOR DETAILS



200 WM	WATERMAIN	200 WM	SL, HYDRO	150 WM	WATERMAIN	150 WM
+	HYDRANT	+	MTS	+	HYDRANT	+
o	VALVE	o	TRAFFIC SIGNALS	+	VALVE	+
525 LDS	LAND DRAINAGE SEWER	525 LDS	GAS	50 GAS	300 LDS	LAND DRAINAGE SEWER
375 WWS	WASTEWATER SEWER	375 WWS	SURVEY BAR	250 WWS	WASTEWATER SEWER	250 WWS
o	MANHOLE	o	FENCE	x	o	PROFILE
□	CATCH BASIN	□	POLE - HYDRO, MTS		□	GROUND ABOVE PIPE
▽	CURB INLET	▽	CURB STOP	o	o	DITCH (NORTH & WEST)
∇	REDUCER	∇	GUY ANCHOR	o	o	DITCH (SOUTH & EAST)
X	COUPLER	X	LIGHT STANDARD	o	o	GUTTER (NORTH & WEST)
o	ANODE	o	TREE	o	o	GUTTER (SOUTH & EAST)
EXISTING	LEGEND-PLAN	PROPOSED	EXISTING	LEGEND-PLAN	PROPOSED	EXISTING
EXISTING	LEGEND-PROFILE	PROPOSED	EXISTING	LEGEND-PROFILE	PROPOSED	EXISTING

LOCATION APPROVED UNDERGROUND STRUCTURES		B.M. ELEV.	FIELD BOOK #
SUPV. U/G STRUCTURES COMMITTEE	DATE		
NO.	REVISIONS	DATE	BY

**CITY OF WINNIPEG WATER AND WASTE ENGINEERING DIVISION**

DESIGNED BY: AS  
CHECKED BY: SC/KZ

DRAWN BY: CJH  
APPROVED BY: KZ

HOR. SCALE: 1:250  
VERTICAL: 1:50

DATE: 2010 03 08

ENGINEER'S SEAL  
ORIGINAL MYLAR SIGNED BY  
A.J. SINGBEIL  
10/03/08

**THE CITY OF WINNIPEG WATER AND WASTE DEPARTMENT**

2010 WATERMAIN RENEWALS  
CONTRACT NO 1  
LOGAN AVENUE  
75 W OF MARTHA STREET TO  
MARTH A STREET

SHEET 7 OF 14  
CITY DRAWING NUMBER  
D-11947