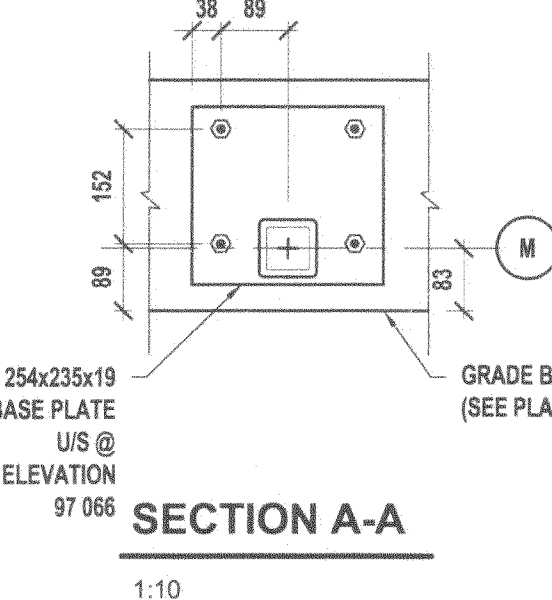


THE CONTRACTOR IS TO VERIFY DIMENSIONS AND DATA NOTED ON THE STRUCTURAL DRAWINGS WITH CONDITIONS ON THE SITE. CO-ORDINATE ALL DIMENSIONS WITH THE ARCHITECTURAL DRAWINGS AND IS HELD RESPONSIBLE FOR REPORTING ANY DISCREPANCIES TO THE ENGINEER BEFORE PROCEEDING WITH THE WORK. VARIATIONS AND MODIFICATIONS TO WORK SHOWN ON THE STRUCTURAL DRAWINGS SHALL NOT BE CARRIED OUT WITHOUT WRITTEN PERMISSION FROM THE ENGINEER. THIS DRAWING IS NOT TO BE SCALED.

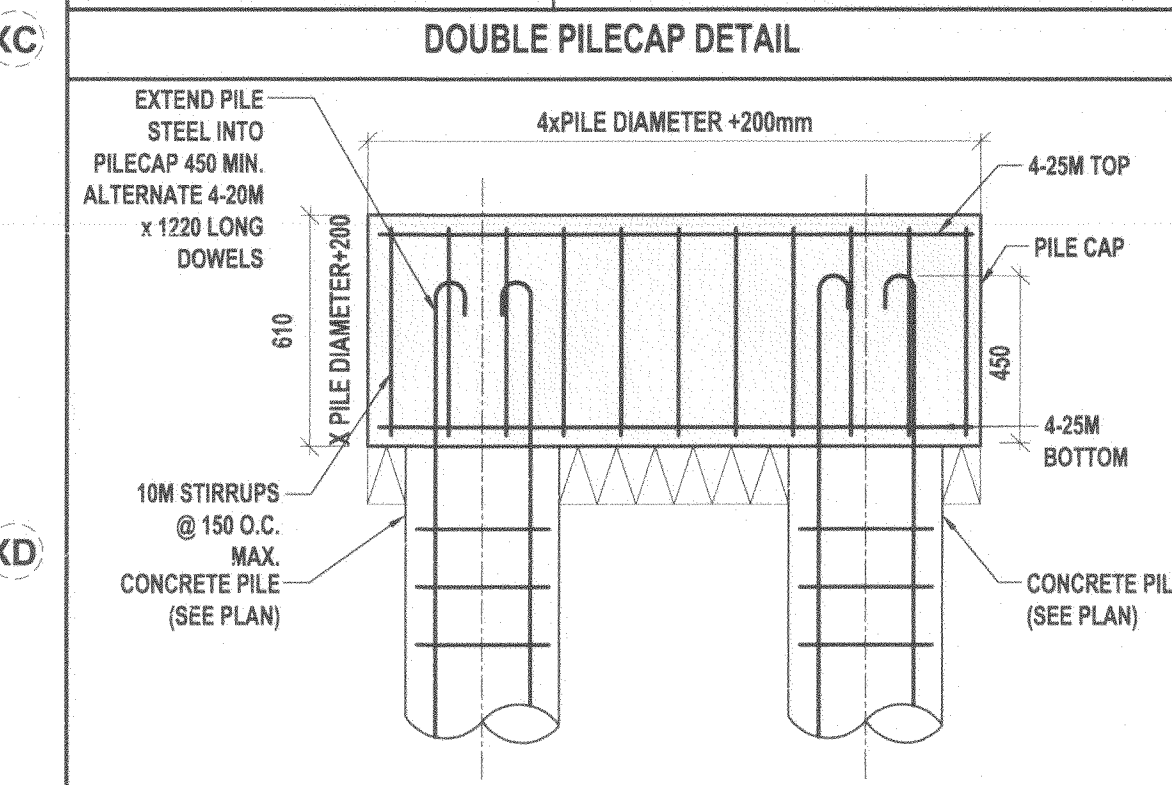
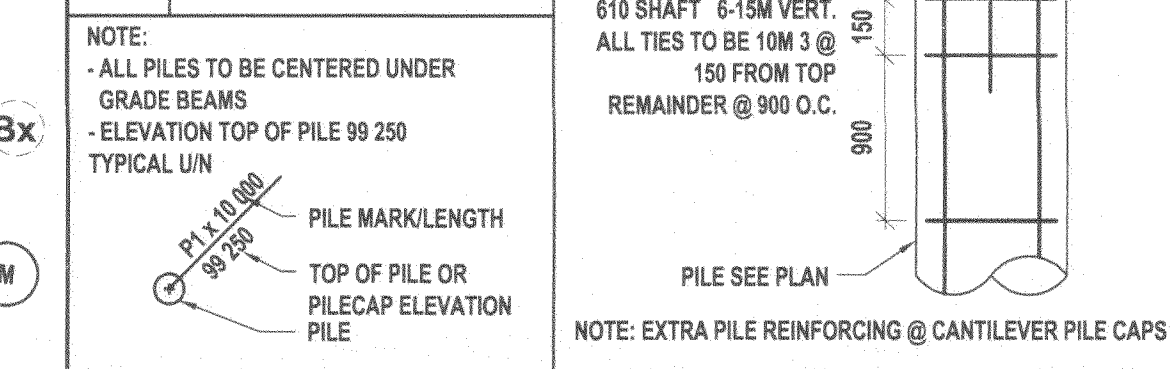
ALL BEAMS, ANGLES AND MISCELLANEOUS METALS INDICATED ON ARCHITECTURAL, MECHANICAL AND/OR ELECTRICAL DRAWINGS BUT NOT SHOWN OR NOTED ON STRUCTURAL DRAWINGS, SHALL BE INCLUDED IN THE TENDER PRICE. THE CONTRACTOR IS RESPONSIBLE FOR CONFIRMING SIZES AND LOCATIONS OF THESE MEMBERS WITH BOTH THE ARCHITECT AND THE ENGINEER PRIOR TO TENDER CLOSING.



**CAST IN PLACE PILE SCHEDULE**

MARK	DESCRIPTION
P1	400Ø CAST IN PLACE PILE
P2	450Ø CAST IN PLACE PILE
P3	500Ø CAST IN PLACE PILE
P4	550Ø CAST IN PLACE PILE
P5	610Ø CAST IN PLACE PILE
P6	762Ø CAST IN PLACE PILE

NOTE:  
- ALL PILES TO BE CENTERED UNDER GRADE BEAMS  
- ELEVATION TOP OF PILE 99.250  
- TYPICAL UN



**DOWEL SCHEDULE**

MARK	DESCRIPTION
D1	15M DOWELS x 1200 L.G. @ 300 O.C. TOP
D2	15M DOWELS x 1200 L.G. @ 450 O.C. TOP
D3	2- 10M DOWELS x 1800mm L.G. @ 200mm O.C.
D4	15M x 3000 L.G. @ 450 O.C. @ TOP OF SLAB
D5	15M x 800 L.G. DRILL & EPOXY GROUT 150 MIN. INTO EXISTING CENTRE OF SLAB/BEAM
D6	15M DOWELS x 1200 L.G. @ 200 O.C. ¶ OF SLAB
D7	10M DOWELS x 900 L.G. @ 450 O.C. TOP OF SLAB
D8	15M x 2000 L.G. @ 450 O.C. @ TOP OF SLAB
D9	15M x 1200 L.G. @ 200 O.C. @ TOP OF SLAB
D10	2-20M x 610 L.G. @ 300 O.C. DRILL & EPOXY GROUT 150 MIN. INTO EXISTING
D11	3-15M @ 300 O.C. EACH WAY TOP

**GRADE BEAM/WALL SCHEDULE**

MARK	DESCRIPTION
GB1	254mm x 750mm CONCRETE BEAM REINF: 2- 25M TOP & BOTTOM 1-15M HORIZONTAL E.F. 10M STIRRUPS @ 300 O.C.
GB2	305mm x 750mm CONCRETE BEAM REINF: 2- 25M TOP & BOTTOM 1-15M HORIZONTAL E.F. 10M STIRRUPS @ 300 O.C.
GB3	305mm x 750mm CONCRETE BEAM REINF: 2- 25M TOP & BOTTOM 10M STIRRUPS @ 350 O.C. 2-15M TOP BENT DOWN @ COLUMNS
GB4	203mm x 1220mm CONCRETE BEAM REINF: 2- 20M TOP & BOTTOM 4-15M HORIZONTAL E.F. 10M STIRRUPS @ 450 O.C.
GB5	203mm x 450/1220mm CONCRETE BEAM REINF: 2- 20M TOP & BOTTOM 4-15M HORIZONTAL E.F. 10M STIRRUPS @ 450 O.C.
GB6	250mm x 610mm CONCRETE BEAM REINF: 2- 25M TOP & BOTTOM 10M STIRRUPS @ 350 O.C.
W1	305mm CONCRETE WALL REINF: 2- 20M TOP & BOTTOM 15M @ 300 O.C. E.F. EACH WAY
W2	203mm CONCRETE WALL REINF: 2- 20M TOP & BOTTOM 15M @ 300 O.C. E.F. EACH WAY

**SLAB SCHEDULE**

MARK	DESCRIPTION
S1	150 STRUCTURAL CONCRETE SLAB 10 MIL. POLY VAPOUR BARRIER 3mm UNTEMPERED MASONITE 200mm CARDBOARD VOID FORM 50mm LEVELLING SAND REINF: 15M @ 300 O.C. E.W. BOT.
S2	165 STRUCTURAL CONCRETE SLAB 10 MIL. POLY VAPOUR BARRIER 3mm UNTEMPERED MASONITE 200mm CARDBOARD VOID FORM 50mm LEVELLING SAND REINF: 15M @ 300 O.C. E.W. BOT. TS. 10M @ 300 O.C.
S3	150 STRUCTURAL CONCRETE SLAB 10 MIL. POLY VAPOUR BARRIER 3mm UNTEMPERED MASONITE 200mm CARDBOARD VOID FORM 50mm LEVELLING SAND REINF: 15M @ 300 O.C. BOT. TS. 10M @ 300 O.C.
S4	127 SLAB ON GRADE ON COMPACTED BASE, GRANULAR SUBBASE (SEE SECTION 15/S1.2) REINF: 10M @ 400 O.C. @ ¶ OF SLAB
S5	200 SLAB ON GRADE ON 150mm COMPACTED GRANULAR BASE ON 300mm COMPACTED GRANULAR SUBBASE REINF: 15M @ 300 O.C. EACH WAY @ ¶ OF SLAB

NOTES:  
- SLAB ON GRADE ON 150 COMP. GRAN. FILL (A BASE) ON COMP. GRANULAR (C BASE) COMPACTED IN 150 LIFTS (AMOUNT OF FILL DETERMINED BY GEOTECH ELEVATIONS OF FLOOR SLAB ON COMPACTED SUBGRADE)  
- SUBGRADE & COMPACTED FILL TO BE PREPARED/INSTALLED AS PER RECOMMENDATIONS IN GEOTECHNICAL REPORT

**Lavergne Draward & Associates Inc.**  
402-138 Portage Avenue East  
Winnipeg, Manitoba  
R3C 0A1  
Tel: 204 947-2222  
Fax: 204 947-2522  
E-mail: general@ldawg.ca  
Web: www.ldawg.ca  
Project # 7057

**APEGM**  
Certificate of Authorization  
Lavergne Draward & Associates Inc.  
No. 1912 Date: FEB. 26, 2010

**JUDYEN LAVERGNE**  
REGISTERED PROFESSIONAL ENGINEER  
FEB. 26, 2010

**harold funk architect inc.**  
Harold Funk Architect Inc.  
Architecture and Urban Design  
2015 Donald Street, Winnipeg, Manitoba, R3C 1E8  
T (204) 943-5087 info@funkarchitect.com  
F (204) 943-9231 funkarchitect.com

project  
**SINCLAIR COMMUNITY CENTRE ADDITION & RENOVATION**  
490 Sinclair Street, Winnipeg

sheet title  
**BASEMENT FOUNDATION FRAMING PLAN**

project number: 7057 drawing number:  
scale: AS NOTED  
drawn by: AP  
approved by: J.L.  
date: 26 FEB. 2010

**S 2.1**