

- GENERAL NOTES:**
- THIS DRAWING IS DIAGRAMMATIC ONLY. DO NOT SCALE.
 - CONTRACTOR SHALL BE RESPONSIBLE FOR COORDINATING EXACT LAYOUTS, ROUTING, ETC.
- DRAWING NOTES:**
- 300X200 EXHAUST AIR DUCT RISER UP.
 - 350X300 EXHAUST AIR DUCT RISER UP.
 - 300X200 COMBUSTION AIR DUCT.
 - DHWT VENT, DUCT SIZED BY DHWT SUPPLIER.
 - BOILER VENT, DUCT SIZED BY BOILER SUPPLIER.
 - 1000X750 RETURN AIR DUCT FROM ABOVE.
 - 1000X750 OUTDOOR AIR DUCT FROM ABOVE.
 - 1100X710 SUPPLY AIR DUCT RISER UP.
 - 400X150 TRANSFER DOOR GRILLE. PRICE STG-1 SERIES.
 - MOTORIZED DAMPERS ON AIR HANDLING UNIT (AHU-2) TO BE INTERLOCKED WITH EF-2.
 - 660X150 TRANSFER AIR DUCT (TYPICAL OF 4) SEE DETAIL # 4/M7.1
 - 12" COLD WATER SUPPLY. REFER TO PLUMBING DRAWING M3.1 FOR CONTINUATION OF PIPING.
 - 50# CONDENSATE PIPE TO NEAREST FLOOR DRAIN. REFER TO PLUMBING DRAWING M1.1 FOR LOCATION.
 - TYPICAL TRANSFER AIR ELBOW. REFER TO DETAIL 2/M5.2.
 - 32# SNOW MELT DRAIN TO NEAREST FD-2

ASHRAE 62.1-2007 COMPLIANCE SCHEDULE

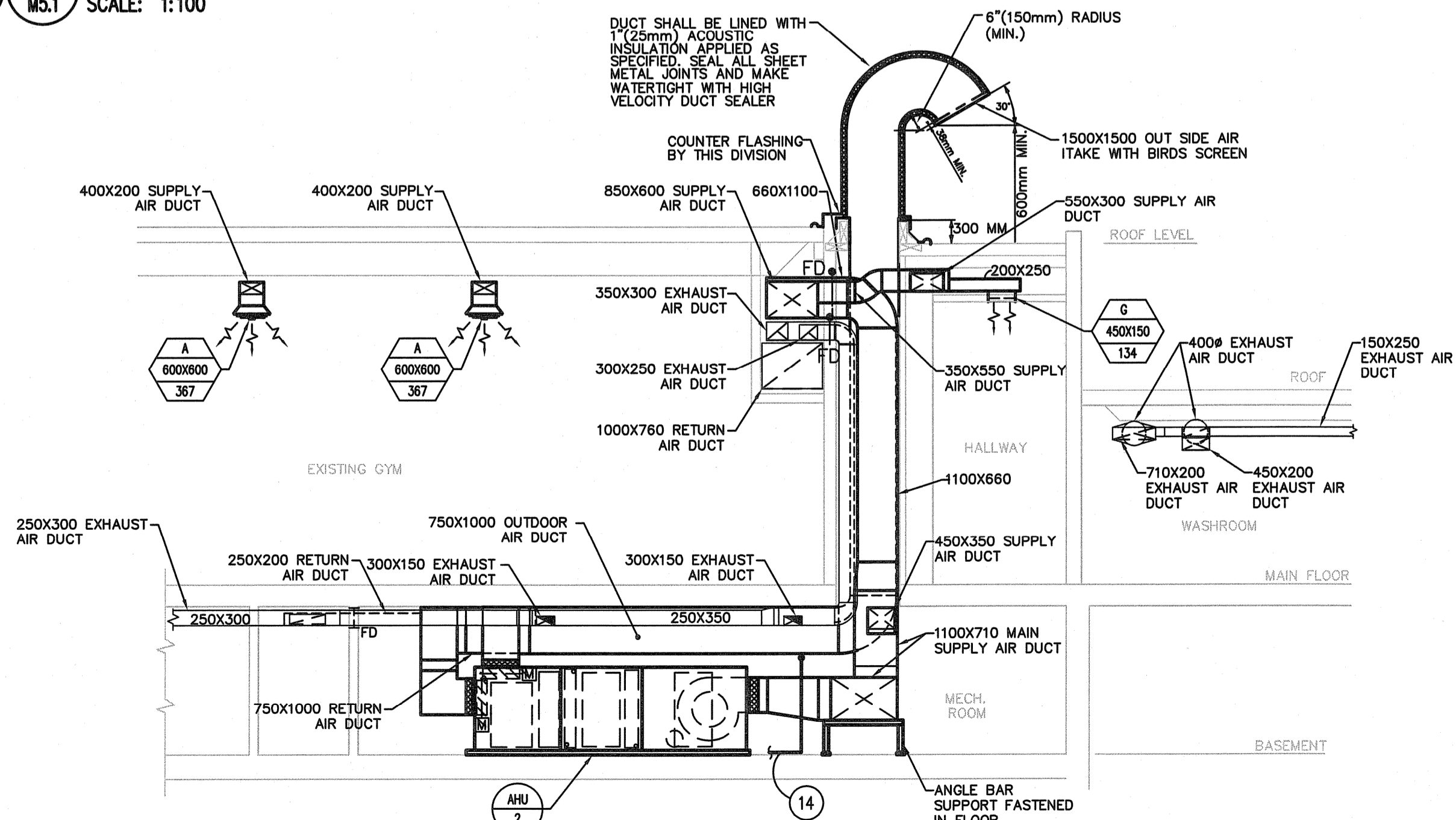
UNIT DESIGNATION	OCCUPANCY CATEGORY	PEOPLE OUTDOOR AIR RATE (CFM/OCCUPANT)	NUMBER OF OCCUPANTS	OCCUPANT AIR VOLUME (CFM)	AREA OF SPACE (FT ²)	AREA OUTDOOR AIR RATE (CFM/FT ²)	**OCCUPIED MINIMUM OUTSIDE AIR (CFM)	***COMBINED OUTSIDE AIR (CFM)
AHU-1	GYMNASIUM M13	7.50 CFM / OCCUPANT	600	4,500	5,520.80	0.06 CFM / FT ²	331.25	4,831.25
AHU-2	MINI GYM	— CFM / OCCUPANT	119	—	1,243.20	0.3 CFM / FT ²	372.96	372.96
	OFFICE	5.0 CFM / OCCUPANT	249	1,245	11,259.70	0.06 CFM / FT ²	675.58	1,920.58
MUA-1	KITCHEN M12	— CFM / OCCUPANT	7	2,300	—	— CFM / FT ²	2,300	2,300
TOTALS							1,079.79	7,124.79

NOTES: **OCCUPANT LOADS BASED ON ASHRAE STANDARD 62.1-2007, VENTILATION FOR ACCEPTABLE INDOOR AIR QUALITY.
 ***THIS COLUMN INDICATED MINIMUM VENTILATION AIR VOLUME IF OUTSIDE AIR DAMPER IS CONTROLLED BY A CO₂ SENSOR.
 ***INFORMATION PROVIDED FOR REFERENCE ONLY.

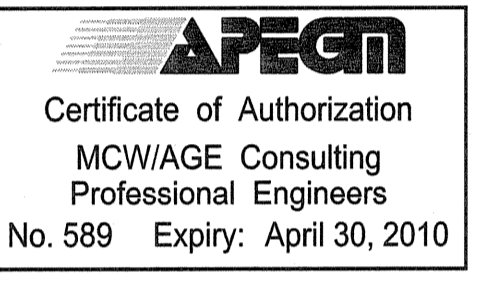
GRILLE & DIFFUSER SCHEDULE

TYPE	MAKE	MODEL	SERVICE	BORDER	CORE	BLADE	FRAME	FASTEN	FINISH	REMARKS
A	PRICE	SCD	SUPPLY	F	---	L	---	A	B12	REFER TO DRAWING FOR SIZES AND LOCATIONS
B	PRICE	80	RETURN	F	---	L	---	A	B12	REFER TO DRAWING FOR SIZES AND LOCATIONS
C	PRICE	530	EXHAUST	F	---	L	---	A	B12	REFER TO DRAWING FOR SIZES AND LOCATIONS
D	PRICE	530	TRANSFER/RETURN	F	---	L	---	A	B12	REFER TO DRAWING FOR SIZES AND LOCATIONS
E	MCOLL AIRFLOW LLC	DDF-608D	SUPPLY	---	---	---	---	SHEET METAL SCREWS	GALV.	FRAMED PERFORATED GRILLE WITH DAMPER. REFER TO DRAWING FOR LOCATION AND SIZES
F	PRICE	520	SUPPLY	F	---	L	---	A	B12	REFER TO DRAWING FOR SIZES AND LOCATIONS
G	PRICE	710	SUPPLY	---	---	---	---	---	---	REFER TO DRAWING FOR SIZES AND LOCATIONS

1 BASEMENT PLAN- HVAC LAYOUT
 M5.1 SCALE: 1:100



2 MECHANICAL SECTION
 M5.1 SCALE: 1:75

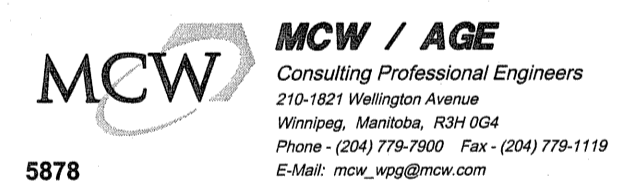


D ISSUED FOR TENDER FEB 26, 2010
 C ISSUED FOR 99% REVIEW FEB 10, 2010
 B ISSUED FOR 90% REVIEW JAN 11, 2010
 A ISSUED FOR 60% REVIEW DEC 02, 2009

This drawing must not be scaled.
 The general Contractor must verify all dimensions, datums and levels prior to commencement of work. All errors and omissions must be reported immediately to the Architect.

Variations and modifications to work shown on this drawing shall not be carried out without written permission from the Architect.

This drawing is the exclusive property of the Architect and cannot be reproduced without written permission of the Architect. Reproduction must bear the name of the Architect. Copyright © 2009.



project
SINCLAIR COMMUNITY CENTRE ADDITION & RENOVATIONS
 490 Sinclair Street, Winnipeg

sheet title
BASEMENT PLAN- VENTILATION LAYOUT

project number: 5878 drawing number: **M5.1**
 scale: N.T.S.
 drawn by: KLG
 approved by: GSR
 date: 2010-02-26