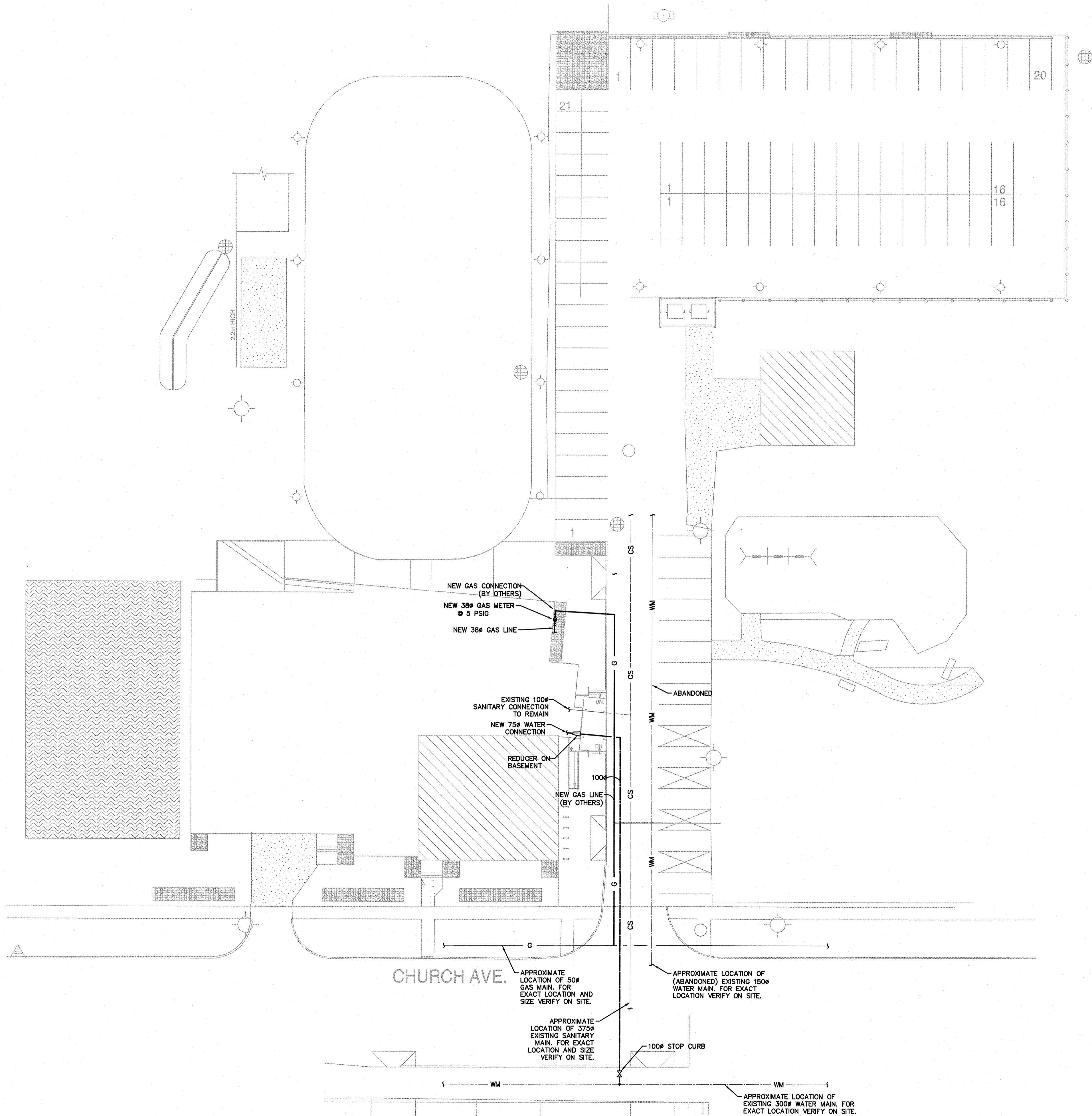


SINCLAIR ST.
ABOVE

MACHRAY AVE.



1 MECHANICAL SITE PLAN
MO.1 SCALE: 1:250



APEGM
Certificate of Authorization
MCW/AGE Consulting
Professional Engineers
No. 589 Expiry: April 30, 2010

D ISSUED FOR TENDER	FEB 26, 2010
C ISSUED FOR 90% REVIEW	FEB 10, 2010
B ISSUED FOR 90% REVIEW	JAN 08, 2010
A ISSUED FOR 60% REVIEW	DEC 02, 2009

This drawing must not be scaled.

The general Contractor must verify all dimensions, datums and levels prior to commencement of work. All errors and omissions must be reported immediately to the Architect.

Variations and modifications to work shown on this drawing shall not be carried out without written permission from the Architect.

This drawing is the exclusive property of the Architect and cannot be reproduced without written permission of the Architect. Reproduction must bear the name of the Architect. Copyright © 2009.

MCW / AGE
Consulting Professional Engineers
210-1821 Wellington Avenue
Winnipeg, Manitoba, R3H 0S4
Phone - (204) 779-7900 Fax - (204) 779-1119
E-Mail: mcw_age@mcw.com
5878

harold funk architect inc.
Harold Funk Architect Inc.
Architecture and Urban Design
401-55 Donald Street, Winnipeg, Manitoba R3C 1L8
T (204) 943-5087 info@funkarchitect.com
F (204) 949-9231 funkarchitect.com

project
**SINCLAIR COMMUNITY
CENTRE
ADDITION & RENOVATIONS**
490 Sinclair Street, Winnipeg

sheet title
**MECHANICAL SITE
PLAN**

project number: 5878 drawing number:
scale: N.T.S. **MO.1**
drawn by: KLG
approved by: GSR
date: 2010-02-26