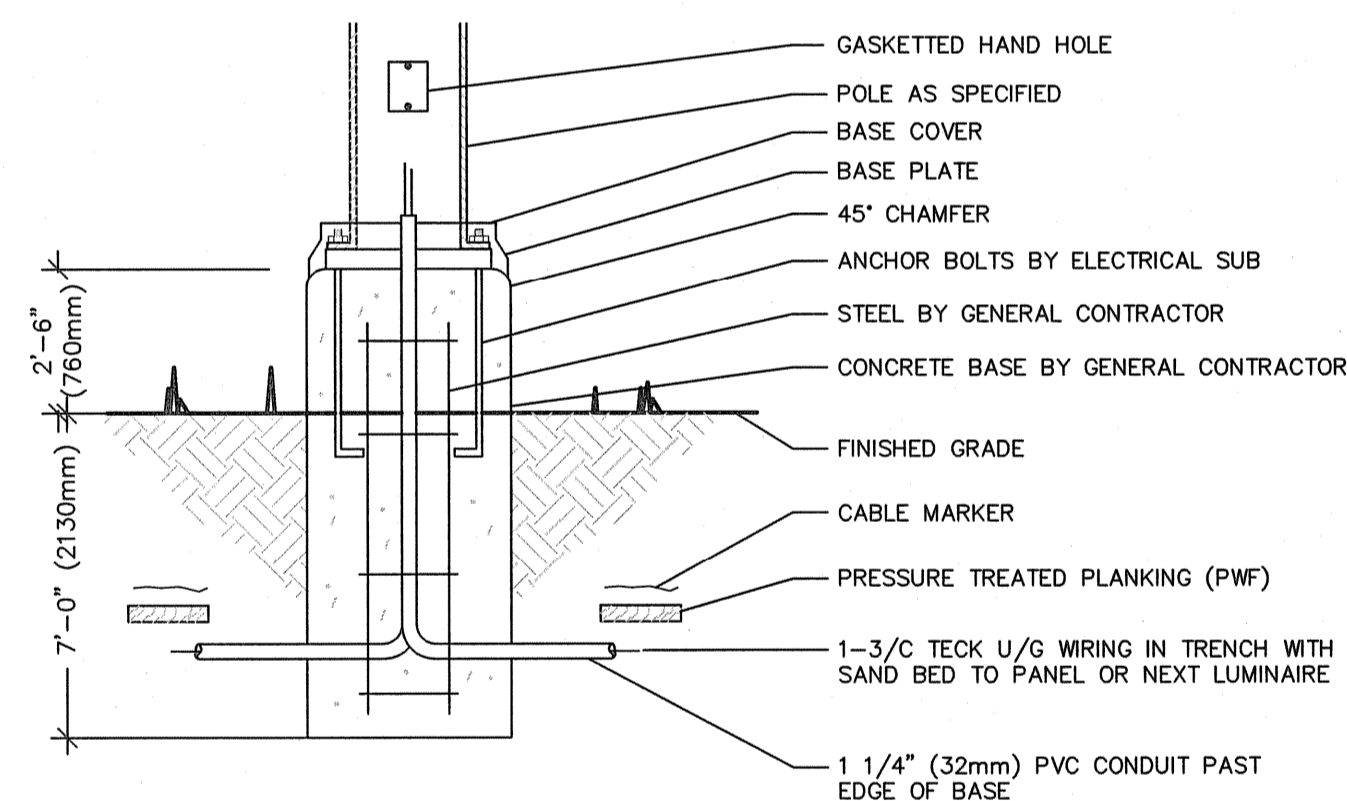
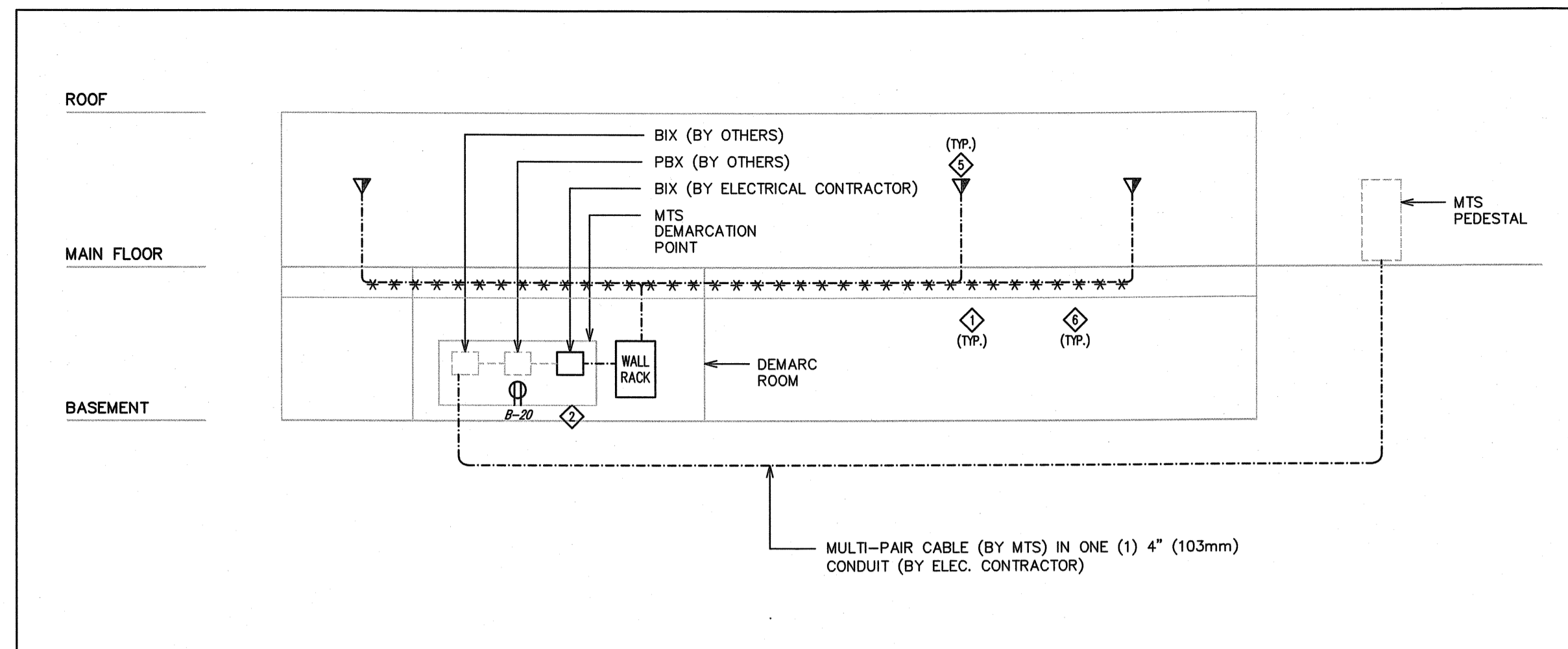


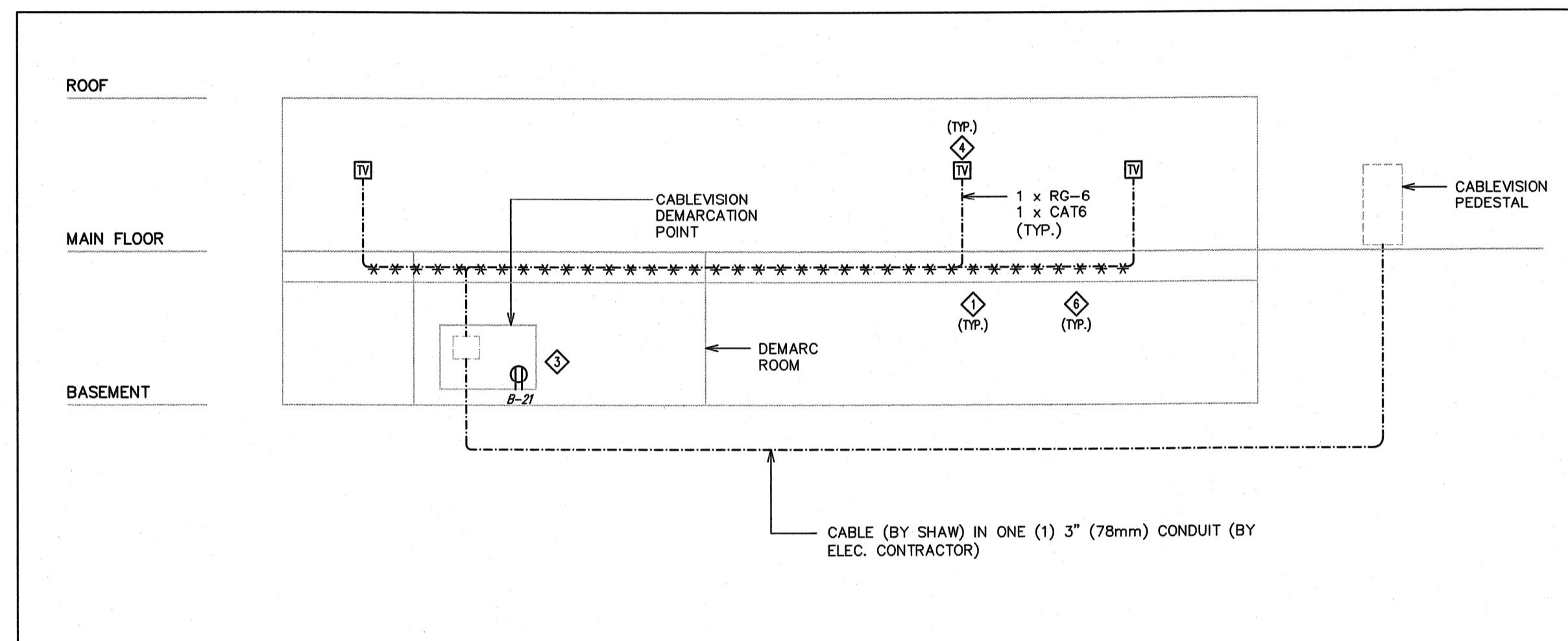
4 PARKING RECEPTACLE I-BEAM MOUNTING DETAIL
E6.1 SCALE: N.T.S.



5 POLE MOUNTED LUMINAIRE BASE DETAIL
E6.1 SCALE: N.T.S.



1 COMMUNICATIONS RISER DETAIL
E6.1 SCALE: N.T.S.



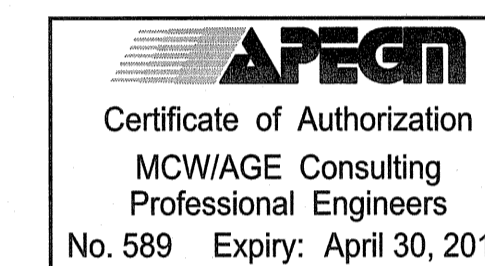
2 CABLEVISION RISER DETAIL
E6.1 SCALE: N.T.S.

NOTES:

- J-HOOKS UTILIZED FOR COMMUNICATIONS/TELEVISION CABLING BRANCH WIRING MOUNTED IN ACCESSIBLE CEILING SPACE. REFER TO COMMUNICATIONS J-HOOK FILL TABLE.
- TELEPHONE DEMARCATON POINT. PROVIDE 36" (900mm) COIL OF #6 AWG GREEN INSULATED COPPER WIRED AND CONNECT TO TGB IN COMMUNICATIONS CLOSET.
- CABLEVISION DEMARCATON POINT. PROVIDE 36" (900mm) COIL OF #6 AWG GREEN INSULATED COPPER WIRED AND CONNECT TO TGB IN COMMUNICATIONS CLOSET.
- PROVIDE ONE RG-6 COAXIAL CABLE AND ONE CAT 6 CABLE FROM EACH TELEVISION OUTLET TO CABLEVISION DEMARCATON POINT.
- PROVIDE MINIMUM OF TWO (2) CAT 6 CABLES FROM EACH COMMUNICATIONS OUTLET TO RACK UNLESS NOTED OTHERWISE.
- PROVIDE CONDUIT SYSTEM FOR CABLING LOCATED IN NON-ACCESSIBLE CEILING SPACE AND AREAS WHERE CABLING IS ACCESSIBLE TO PUBLIC. REFER TO COMMUNICATIONS CONDUIT FILL TABLE.

COMMUNICATIONS CONDUIT FILL TABLE	
MINIMUM CONDUIT SIZE	MAXIMUM # OF CABLES (CAT 5, 5E, 6 OR HIGHER)
1" (27mm)	6
1-1/4" (35mm)	10
1-1/2" (41mm)	15
2" (53mm)	20
2-1/2" (63mm)	30
3" (78mm)	40

COMMUNICATIONS J-HOOK FILL TABLE	
J-HOOK SIZE	MAXIMUM # OF CABLES (CAT 5, 5E, 6 OR HIGHER)
3/4"	6
1-5/16"	20
2"	32
4"	120



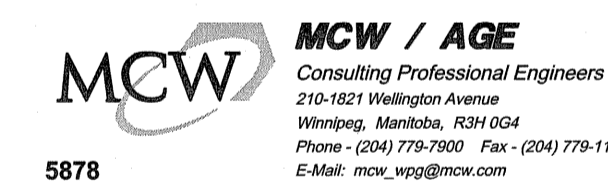
D ISSUED FOR TENDER FEB 26, 2010
 C ISSUED FOR 99% REVIEW FEB 10, 2010
 B ISSUED FOR 90% REVIEW JAN 08, 2010
 A ISSUED FOR 60% REVIEW DEC 02, 2009

This drawing must not be scaled.

The general Contractor must verify all dimensions, datums and levels prior to commencement of work. All errors and omissions must be reported immediately to the Architect.

Variations and modifications to work shown on this drawing shall not be carried out without written permission from the Architect.

This drawing is the exclusive property of the Architect and cannot be reproduced without written permission of the Architect. Reproduction must bear the name of the Architect. Copyright © 2009.



project
SINCLAIR COMMUNITY CENTRE ADDITION & RENOVATIONS
 490 Sinclair Street, Winnipeg

sheet title
DETAILS

project number: 5878 **drawing number:**
scale: N.T.S. **E6.1**
drawn by: P.A.S.
approved by: K.B.G.
date: 2010-02-26