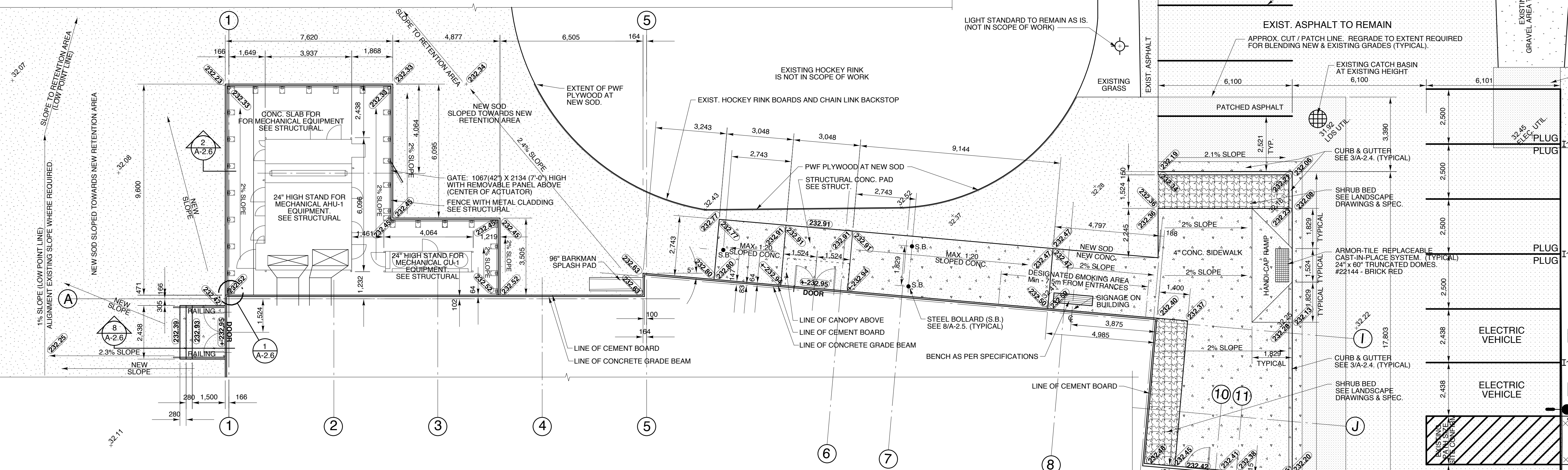
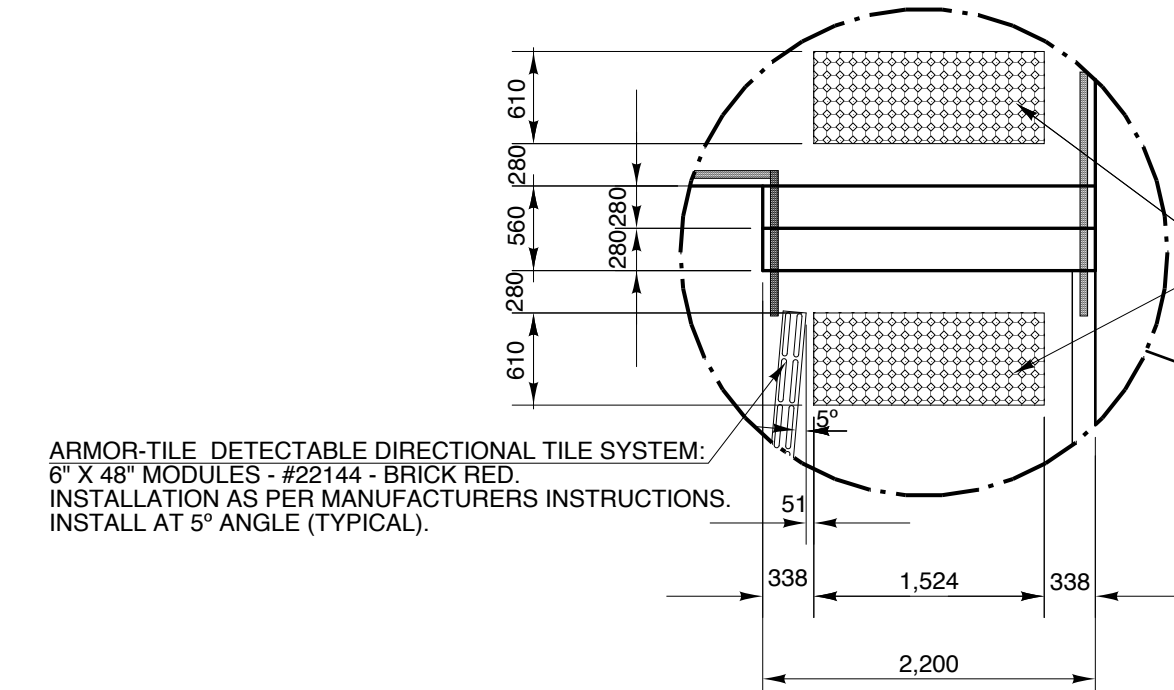


GENERAL SITE DETAIL NOTES:

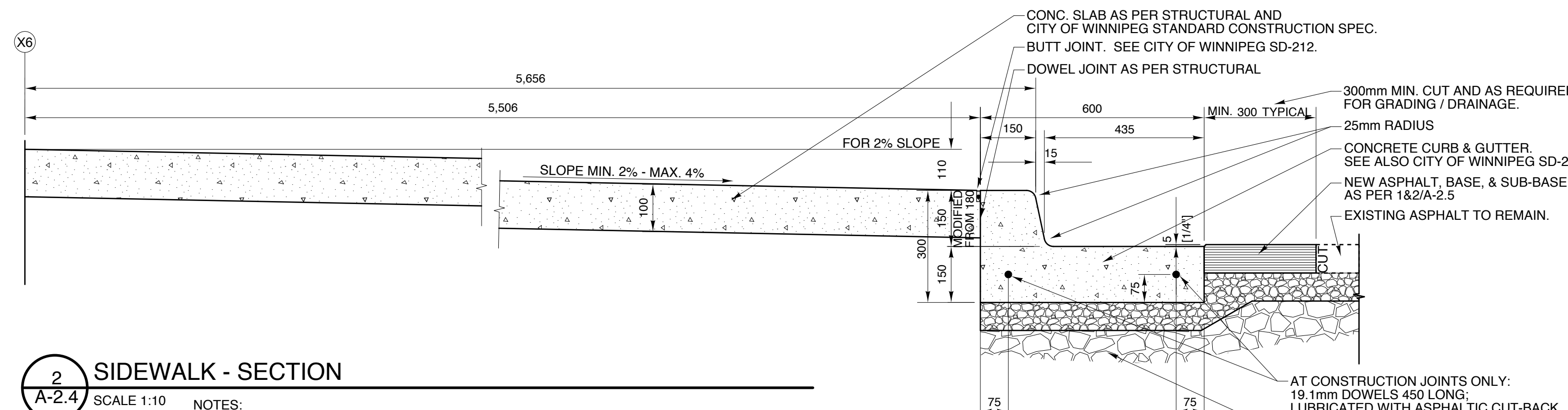
- 1) ALL SITE DETAILS AND SITE WORK TO MEET CITY OF WINNIPEG STANDARD CONSTRUCTION SPECIFICATIONS. WHERE DISCREPANCIES OCCUR BETWEEN THE DRAWINGS AND CITY STANDARDS, THE MORE STRINGENT OPTION SHALL BE FOLLOWED.
- 2) SEE LANDSCAPE DRAWINGS AND SPECIFICATIONS.
- 3) SEE ELECTRICAL & STRUCTURAL DRAWINGS & SPECIFICATIONS.
- 4) PREPARE BASE AND SUB-BASE LAYERS IN ACCORDANCE WITH GEOTECHNICAL REPORT.
- 5) RELOCATE UTILITIES TO NEW LOCATIONS, AND COORDINATE WITH UTILITY AUTHORITIES. SEE ELECTRICAL & MECHANICAL DRAWINGS AND SPECIFICATIONS.
- 6) SITE VERIFY ALL DIMENSIONS AND LAYOUTS. CONFIRM PLACEMENT OF ANY AND ALL SITE FEATURES PRIOR TO COMMENCING WORK.
- 7) CONTRACTOR IS RESPONSIBLE TO VERIFY GRADES & SHALL DISCUSS ANY DISCREPANCIES, CHALLENGES OR CHANGES WITH THE ARCHITECT BEFORE PROCEEDING.
- 8) RAISE EXISTING GRADE AROUND BUILDING AS INDICATED. ENSURE CONSISTENT SLOPE AWAY FROM BUILDING. WORK NEW SLOPES INTO EXISTING SLOPES & TOWARDS DRAINAGE SWALES.
- 9) CONTRACTOR TO ENSURE TREES, FENCES, WALKS AND ALL COMMUNITY CENTRE PROPERTY ARE PROTECTED FROM DAMAGE DURING CONSTRUCTION.



1 PART SITE PLAN - NORTH & EAST SIDE OF BUILDING
A-2.4 SCALE 1:100

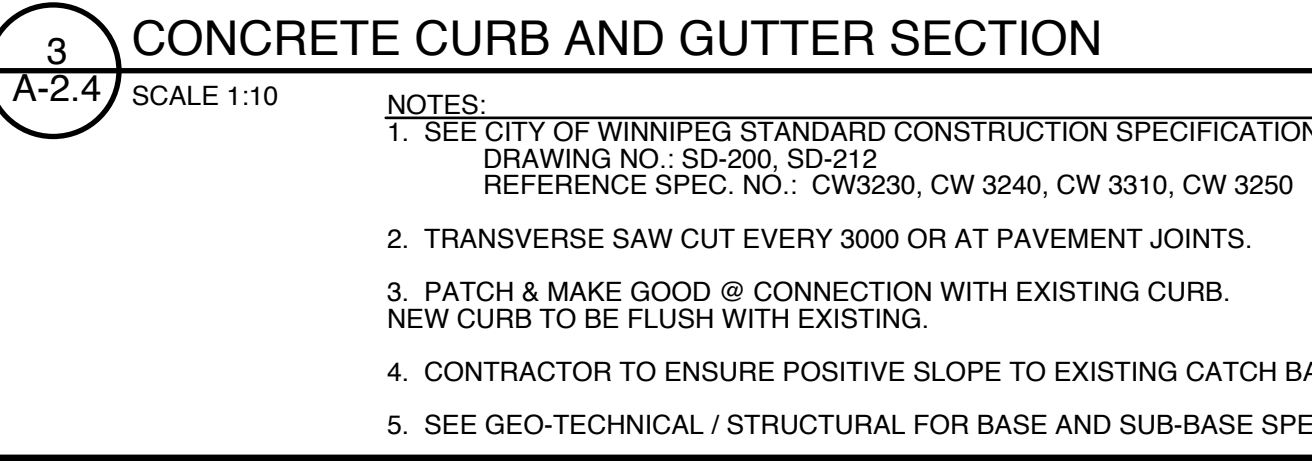


PLAN DETAIL - ARMOR-TILE SYSTEMS
SCALE 1:50



2 SIDEWALK - SECTION
A-2.4 SCALE 1:10

- NOTES:**
1. SEE CITY OF WINNIPEG STANDARD CONSTRUCTION SPECIFICATIONS: DRAWING NO.: SD-228A REFERENCE SPEC. NO.: CW 3235, CW 3310, CW 3325.
 2. TRANSVERSE SAW CUT EVERY 1500 (MIN. 1250, MAX. 1750) AND AT PAVEMENT JOINTS. SAW CUTS TO BE PARALLEL/PERPENDICULAR TO NEW ANGLED ADDITION (5° ANGLE). SITE CONFIRM LOCATIONS WITH DEPARTMENTAL REPRESENTATIVE. SEE CITY OF WINNIPEG SD-212.
 3. SIDEWALK SLAB SURFACE TO BE GIVEN A TEXTURED BROOM FINISH, AND NO EDGER MARKS WILL BE LEFT, UNLESS ADVISED OTHERWISE.
 4. DOWEL AND SAW CUT AT CONNECTION TO EXISTING CONCRETE SIDEWALK. SEE CONNECTION DETAIL. NEW SIDEWALK TO BE FLUSH WITH NEW CURB.
 5. SEE STRUCTURAL DRAWINGS.
 6. CONTRACTOR TO ENSURE POSITIVE SLOPE TO EXISTING CATCH BASINS.
 7. SEE GEO-TECHNICAL REPORT / STRUCTURAL FOR BASE AND SUB-BASE SPECIFICATIONS.



3 CONCRETE CURB AND GUTTER SECTION
A-2.4 SCALE 1:10

- NOTES:**
1. SEE CITY OF WINNIPEG STANDARD CONSTRUCTION SPECIFICATIONS: DRAWING NO.: SD-200, SD-212 REFERENCE SPEC. NO.: CW3230, CW 3240, CW 3310, CW 3320
 2. TRANSVERSE SAW CUT EVERY 3000 OR AT PAVEMENT JOINTS.
 3. PATCH & MAKE GOOD @ CONNECTION WITH EXISTING CURB. NEW CURB TO BE FLUSH WITH EXISTING.
 4. CONTRACTOR TO ENSURE POSITIVE SLOPE TO EXISTING CATCH BASINS.
 5. SEE GEO-TECHNICAL / STRUCTURAL FOR BASE AND SUB-BASE SPECIFICATIONS.

revision

--	--

This drawing must not be scaled.
The Contractor must verify all dimensions, datums and levels prior to commencement of work. All errors and omissions must be reported immediately to the Contract Administrator.
Variations and modifications to work shown on this drawing shall not be carried out without written permission from the Contractor Administrator.
This drawing is the exclusive property of the Architect and cannot be reproduced without written permission of the Architect. Reproduction must bear the name of the Architect. Copyright © 2010.

ARCHITECT
FUNK
26/02/2010
No. 019
ARCHITECTURAL CORPORATION

REGISTERED ARCHITECT
HAROLD G. FUNK
26/02/2010
No. 019

harold funk architect inc.
Harold Funk Architect Inc.
Architecture and Urban Design
401-55 Donald Street, Winnipeg, Manitoba R3C 1L8
T (204) 943-5087 info@funkarchitect.com
F (204) 943-9231 funkarchitect.com

project
SINCLAIR PARK COMMUNITY CENTRE
Winnipeg, Manitoba

sheet title
SITE DETAILS

project number: 08-011 **drawing number:** A-2.4
scale: AS NOTED
drawn by: T.E.
approved by: H.F.
date: 26th FEB. 2010