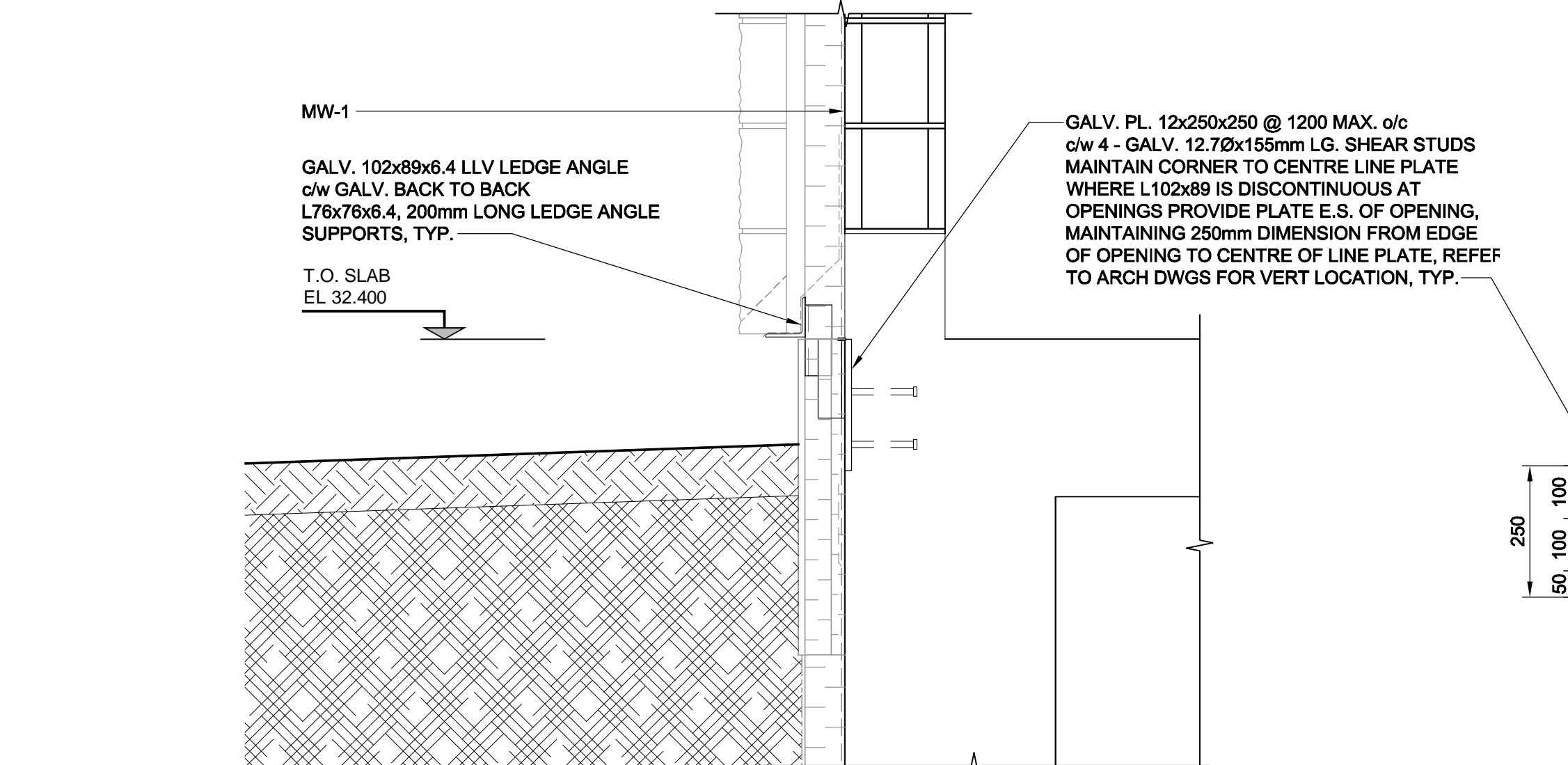
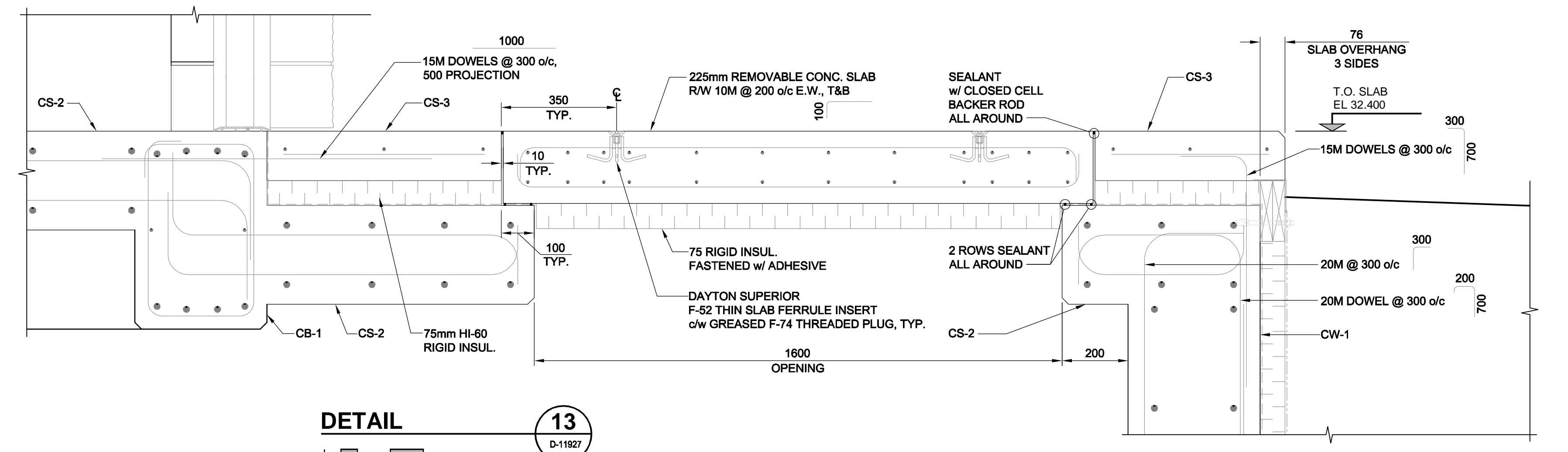


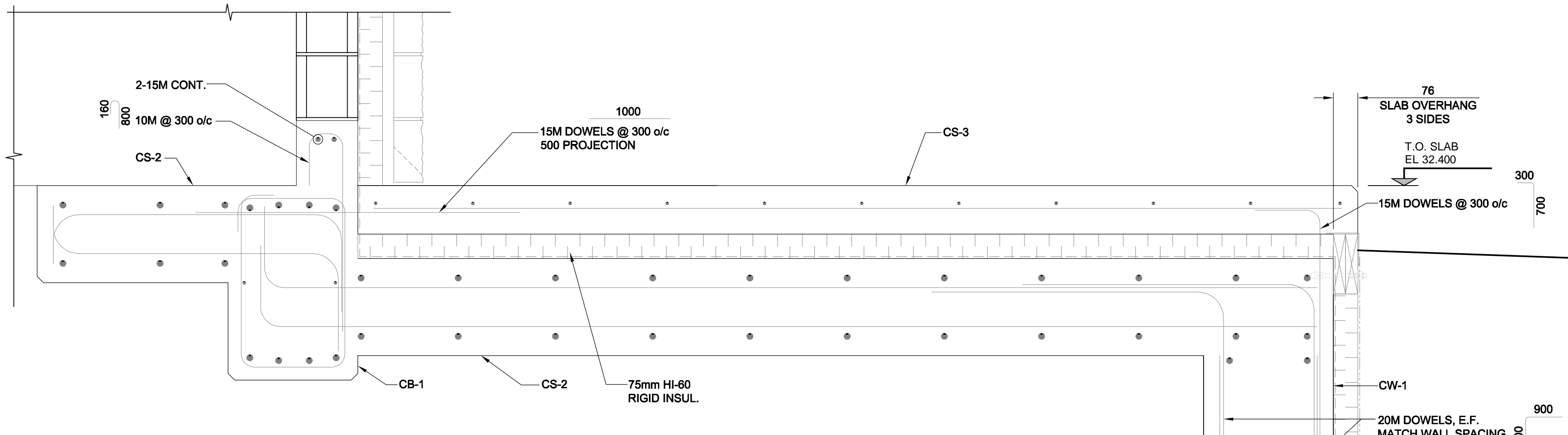
DETAIL 11
D-11927
SCALE 1:10



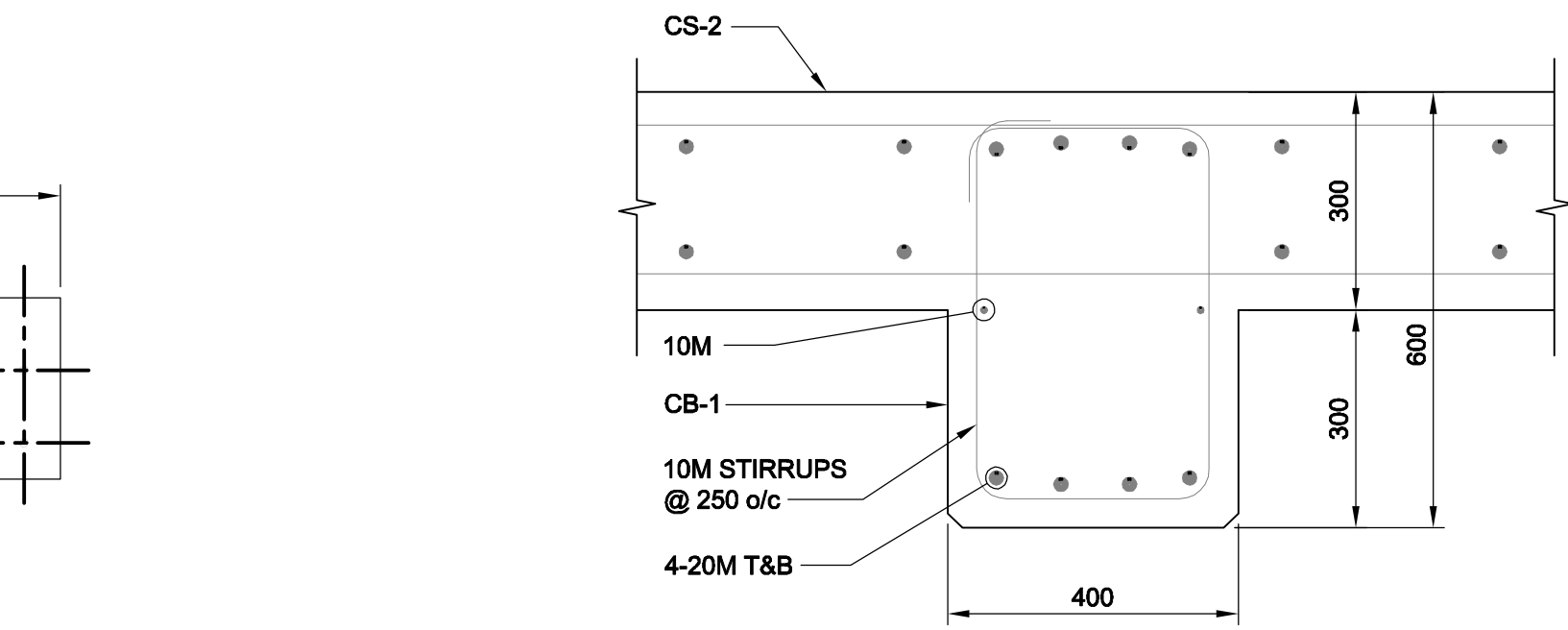
DETAIL 12
D-11927
SCALE 1:10



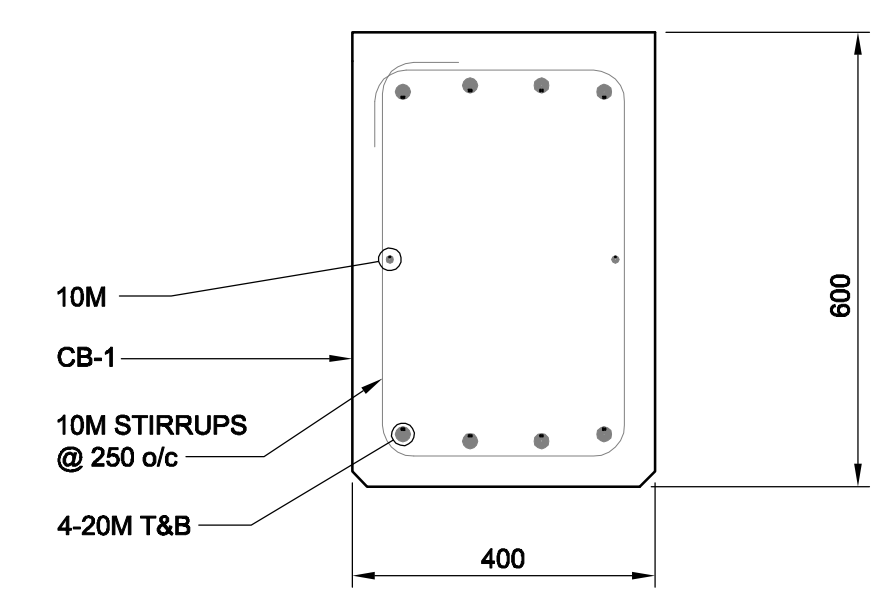
DETAIL 13
D-11927
SCALE 1:10



DETAIL 14
D-11928
SCALE 1:10



DETAIL 15
D-11927
SCALE 1:10



DETAIL 16
SCALE 1:10

LOCATION APPROVED UNDERGROUND STRUCTURES

SUPR. U/G STRUCTURES COMMITTEE	DATE

NOTE:
LOCATION OF UNDERGROUND STRUCTURES AS SHOWN ARE BASED ON THE BEST INFORMATION AVAILABLE. BUT NO GUARANTEE IS GIVEN THAT ALL EXISTING UTILITIES ARE SHOWN OR THAT THE GIVEN LOCATIONS ARE EXACT. CONFIRMATION OF EXISTENCE AND EXACT LOCATION OF ALL SERVICES MUST BE OBTAINED FROM THE INDIVIDUAL UTILITIES BEFORE PROCEEDING WITH CONSTRUCTION.

AECOM
Certificate of Authorization
AECOM Canada Ltd.
No. 4671 Date: FEB. 08, 2010

DESIGNED BY	KK/GGP	CHECKED BY	GGP
DRAWN BY	KK	APPROVED BY	Bryan Weber
HOR. SCALE	AS SHOWN	RELEASED FOR CONSTRUCTION	KZ
VERT. SCALE	-	DATE	FEB. 9/10

AECOM
This drawing has been prepared for the use of AECOM's client and may not be used, reproduced or relied upon by third parties, except as agreed by AECOM and its client, as required by law or for use by governmental reviewing agencies. AECOM accepts no responsibility, and denies any liability whatsoever, to any party that modifies this drawing without AECOM's express written consent. Do not scale this document. All measurements must be obtained from stated dimensions.

PROFESSIONAL'S SEAL
ORIGINAL SIGNED BY
B.F. ABDUL WAHID
2010/02/08
CONSULTANT DRAWING NO.
D265-250-00_01-S-4002_RX.dwg

BID OPPORTUNITY NO. 16-2010

THE CITY OF WINNIPEG WATER AND WASTE DEPARTMENT

BRANCH I AQUEDUCT VALVE CHAMBER AT McPHILLIPS STREET PUMPING STATION

STRUCTURAL DETAILS

SHEET 20 OF 28
CITY DRAWING NUMBER
D-11930
REV 0