

**CONSTRUCTION NOTES:**

- CONTRACTOR SHALL TAKE PRECAUTIONARY STEPS TO AVOID DAMAGE FROM CONSTRUCTION ACTIVITIES TO EXISTING BOULEVARDS AND TREES WITHIN THE LIMITS OF CONSTRUCTION.
- SEWER TO BE INSTALLED BY TRENCHLESS METHODS.
- LOCATION OF EXISTING UTILITIES TO BE CONFIRMED IN THE FIELD BY THE CONTRACTOR.
- LIMITS OF SIDEWALK RENEWALS TO BE FINALIZED IN THE FIELD BY THE CONTRACT ADMINISTRATOR.
- BOULEVARD REPLACEMENT TO BE FINALIZED IN THE FIELD BY THE CONTRACT ADMINISTRATOR.
- CONTRACTOR TO PLUG ANY ABANDONED PIPES THAT ARE BROKEN DURING CONSTRUCTION.
- TRENCHES & EXCAVATIONS WITHIN 1 METRE OF A PAVED AREA INCLUDING SIDEWALKS SHALL BE CLASS 3 BACKFILL.
- BACKFILL IN BOULEVARD TO BE CLASS 5.
- SEE ROAD CONSTRUCTION DRAWINGS FOR CB INSTALLATION.

**METRIC**

WHOLE NUMBERS INDICATE MILLIMETRES  
DECIMALIZED NUMBERS INDICATE METRES.

**WARNING**

IF POWER EQUIPMENT OR EXPLOSIVES ARE TO BE USED FOR EXCAVATION ON THIS PROJECT THE CONTRACTOR MUST:

- NOTIFY THE GAS COMPANY OF THE PROPOSED LOCATION OF EXCAVATION.
- TAKE PRECAUTION TO AVOID DAMAGE TO GAS COMPANY INSTALLATIONS. SEE PROVINCIAL REGULATION 210/72 FOR DETAILS.

NOTE: CHAINAGES SHOWN ALONG CL OF PIPE

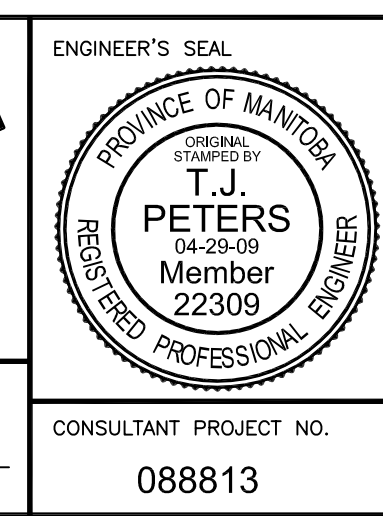
COORDINATES		RIM ELEV.	#	STATION	INVERT			
NORTHING	EASTING				N	S	E	W
5527050.764	633964.575	231.890	MH09	1+000.00			226.607	
5527110.581	634017.480	230.720	MH10	1+079.86			227.552	227.622
5527164.757	634068.300	230.120	MH11	1+154.14			227.225	227.255

NOTE: ALL COORDINATES SHOWN ON DRAWINGS ARE NAD 83 UTM. COMBINED SCALE FACTOR TO OBTAIN GROUND DISTANCES IS 0.9997688



LOCATION UNDERGROUND	APPROVED STRUCTURES	B.M. 654265 (633392.694, 5525026.192) ELEV. 232.518
SUPY. U/G STRUCTURES COMMITTEE	DATE	
NOTE: LOCATION OF UNDERGROUND STRUCTURES AS SHOWN ARE BASED ON THE BEST INFORMATION AVAILABLE. BUT NO GUARANTEE IS GIVEN THAT ALL EXISTING UTILITIES ARE SHOWN OR THAT THE GIVEN LOCATIONS ARE EXACT. CONFIRMATION OF EXISTENCE AND EXACT LOCATION OF ALL SERVICES MUST BE OBTAINED FROM THE INDIVIDUAL UTILITIES BEFORE PROCEEDING WITH CONSTRUCTION.		
2	ISSUED FOR TENDER	04/29/09 TJP
1	SUBMITTED FOR 95% REVIEW	02/13/09 TJP
NO.	REVISIONS	DATE BY

DESIGNED BY	CLP
DRAWN BY	AJP
CHECKED BY	ORIGINAL SIGNED BY TARAN J. PETERS
APPROVED BY	ORIGINAL SIGNED BY DAVE P. KRAHN
HOR. SCALE	1 : 250
VERTICAL	1 : 50
DATE	04/29/09



**THE CITY OF WINNIPEG TRANSIT DEPARTMENT**

SOUTHWEST RAPID TRANSIT CORRIDOR - STAGE 1  
TRANSITWAY CONSTRUCTION, DONALD/HARKNESS RECONSTRUCTION & ASSOCIATED WORKS

LDS - STRADBROOK TO QUEEN ELIZABETH WAY - STA. 1+000 TO 1+160

CITY DRAWING NUMBER: P-3299-53  
SHEET 53 OF 64  
CONSULTANT DRAWING NUMBER: C3-U4004-T

G:\CAD\088813\Contract\Contract\_3-Donald Street\Current\Roadway\C1-413-LDS-Stradbroke to QEW.dwg