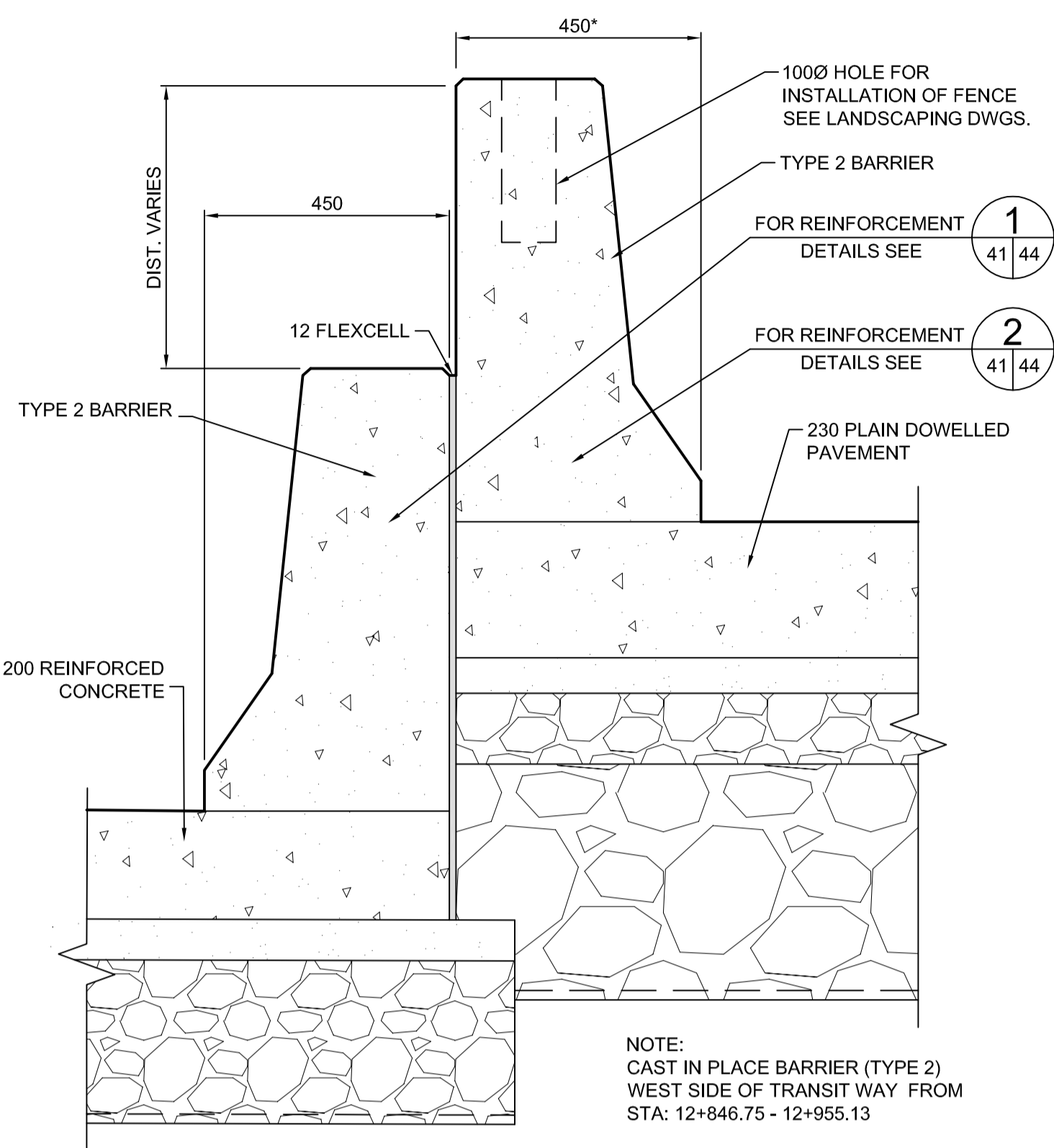
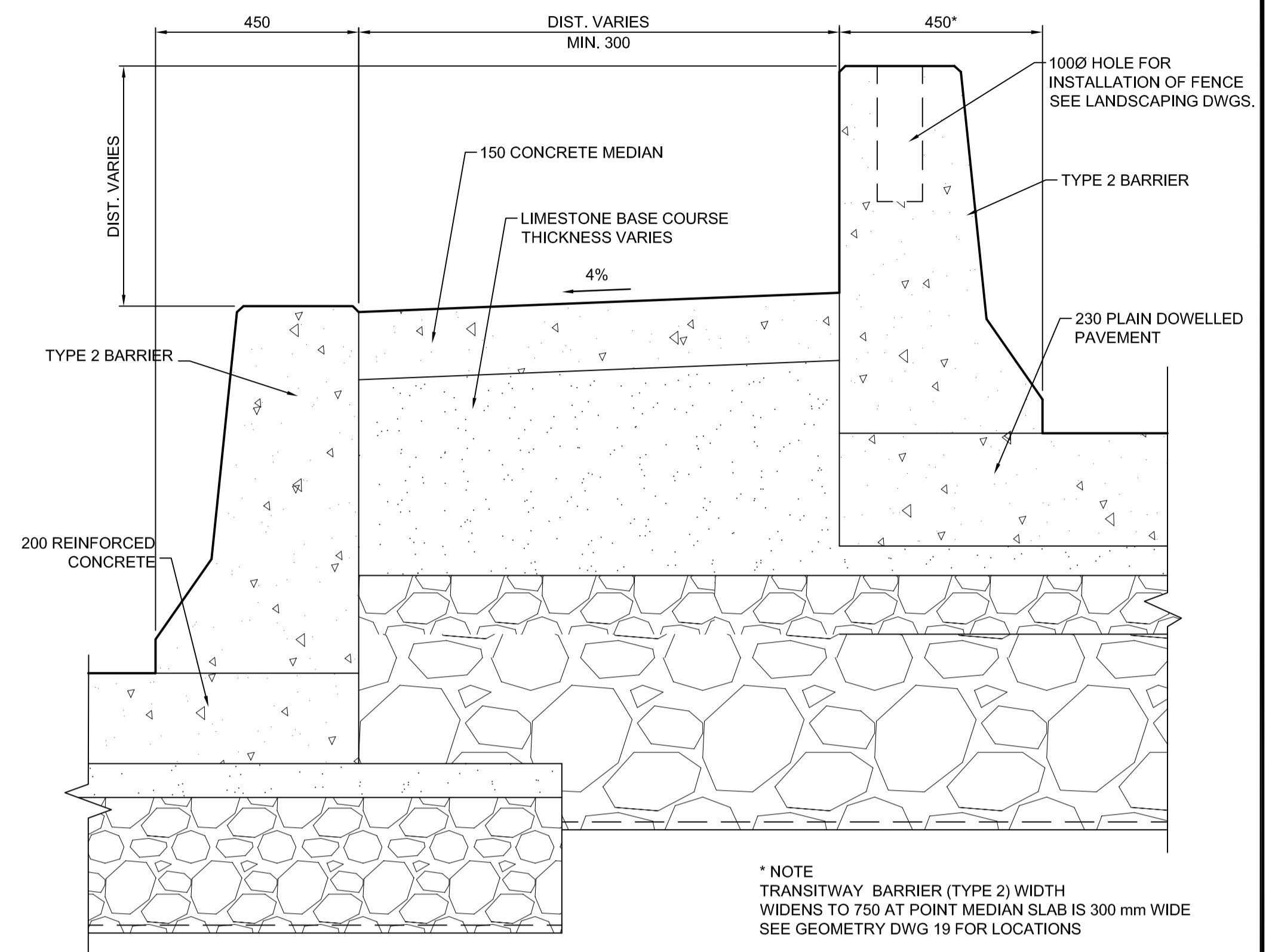


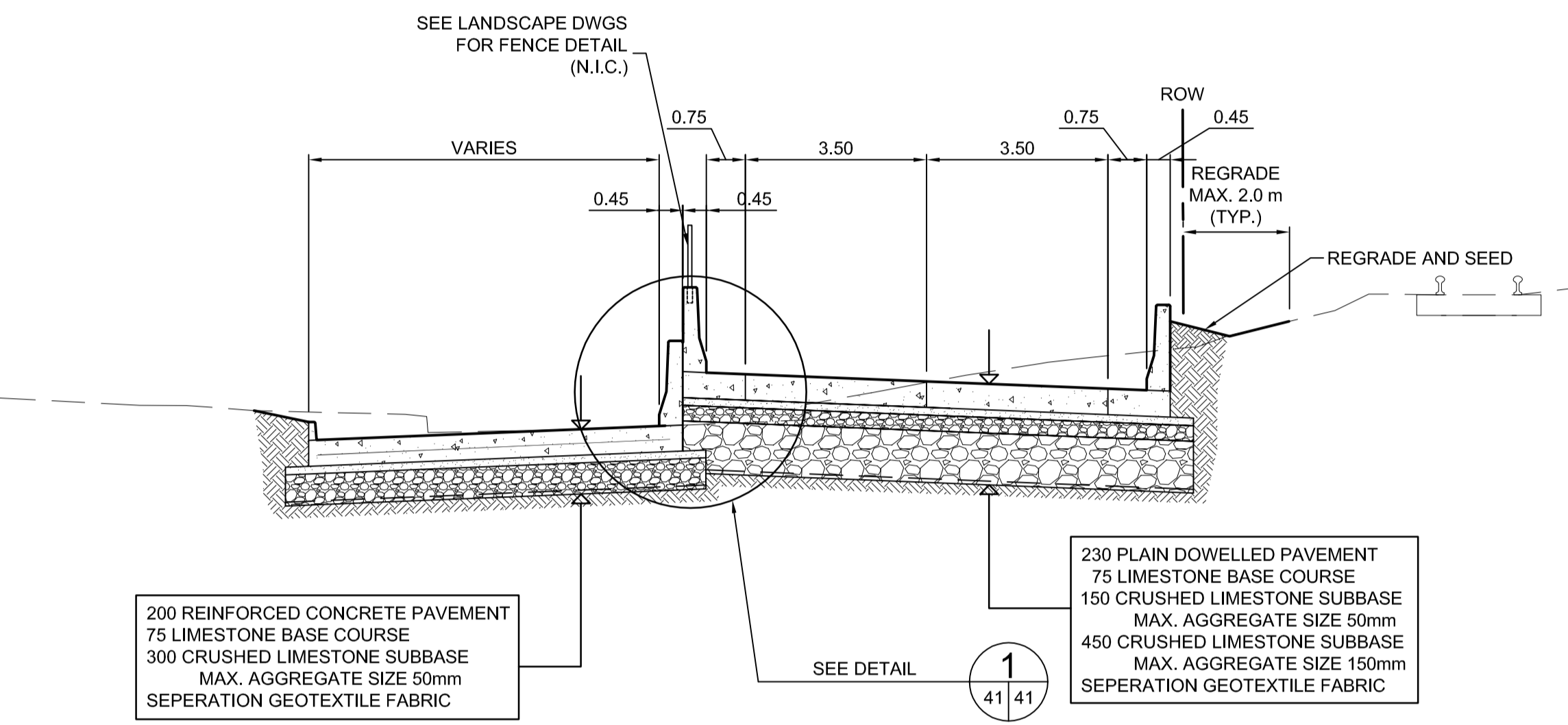
**A** TRANSITWAY SECTION - STA. 12+770  
SCALE H=1:100 V=1:50



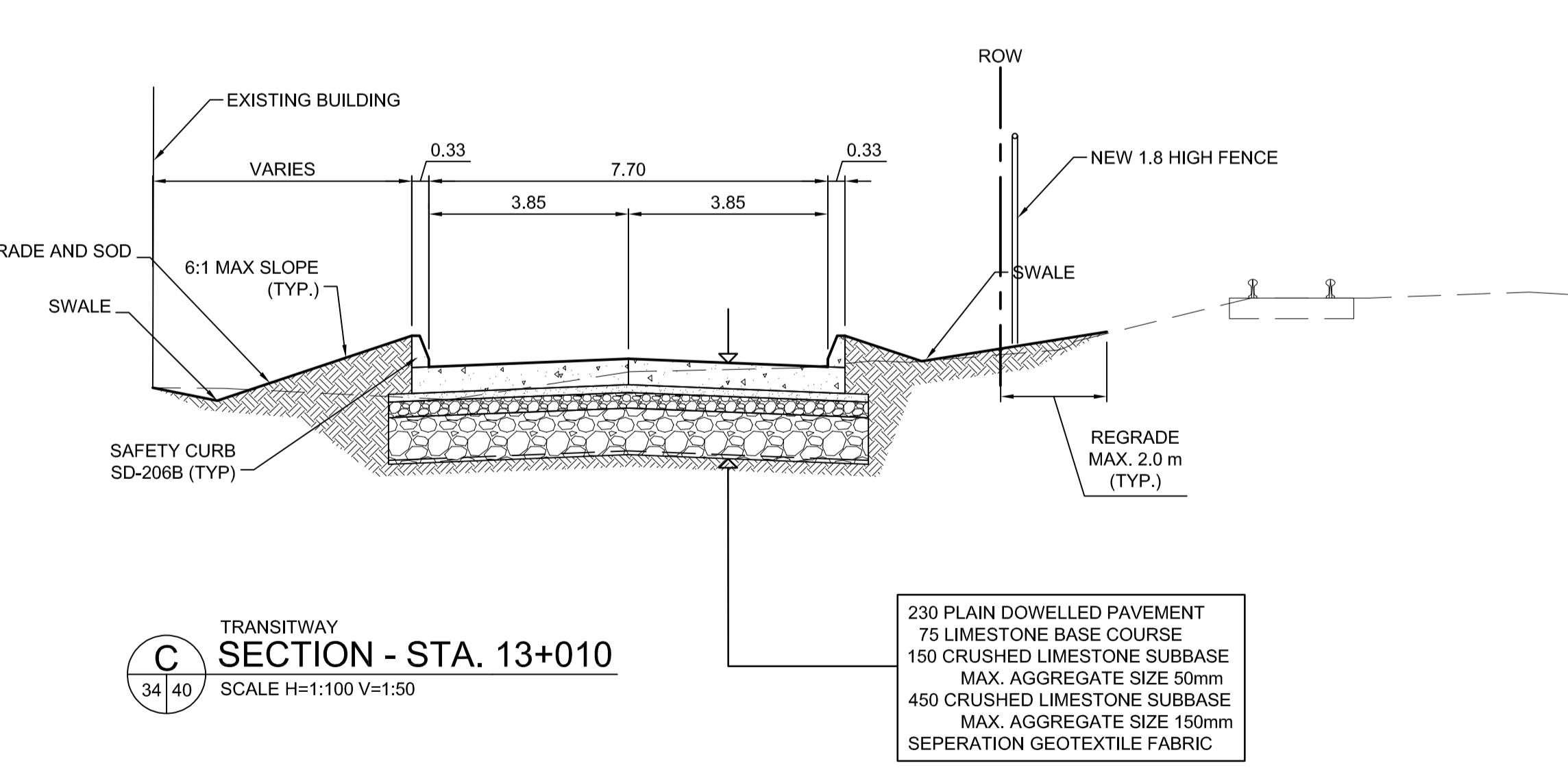
**DETAIL 1**  
SCALE 1:10



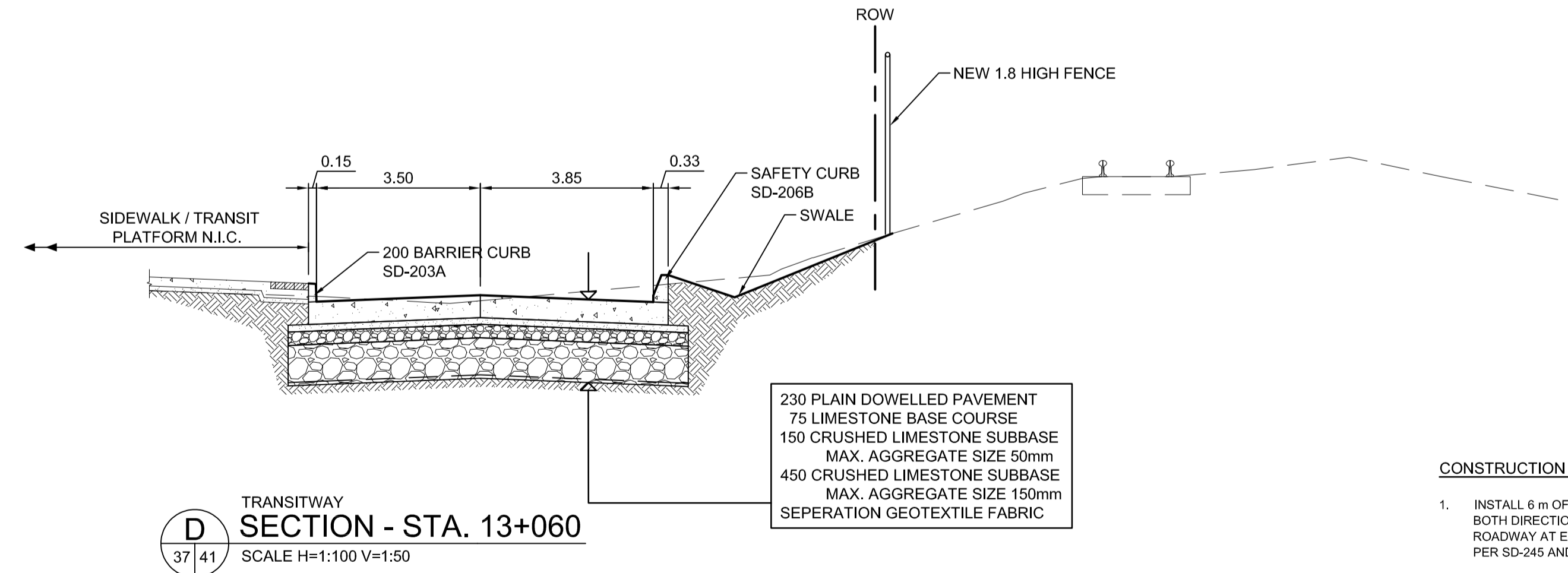
**DETAIL 2**  
SCALE 1:10



**B** LAGOPOULOS WAY SECTION - STA. 12+900  
SCALE H=1:100 V=1:50



**C** TRANSITWAY SECTION - STA. 13+010  
SCALE H=1:100 V=1:50



**D** TRANSITWAY SECTION - STA. 13+060  
SCALE H=1:100 V=1:50

**CONSTRUCTION NOTES:**  
1. INSTALL 6 m OF 150 mm SUB DRAIN IN BOTH DIRECTIONS PARALLEL TO ROADWAY AT EACH CATCH BASIN AS PER SD-245 AND CAP ENDS.

**METRIC**  
WHOLE NUMBERS INDICATE MILLIMETRES  
DECIMALIZED NUMBERS INDICATE METRES.



<b>LOCATION UNDERGROUND STRUCTURES</b> SUPV. U/G STRUCTURES COMMITTEE DATE NOTE: LOCATION OF UNDERGROUND STRUCTURES AS SHOWN ARE BASED ON THE BEST INFORMATION AVAILABLE, BUT NO GUARANTEE IS GIVEN THAT ALL EXISTING UTILITIES ARE SHOWN OR THAT THE GIVEN LOCATIONS ARE EXACT. CONFIRMATION OF EXISTENCE AND EXACT LOCATION OF ALL SERVICES MUST BE OBTAINED FROM THE INDIVIDUAL UTILITIES BEFORE PROCEEDING WITH CONSTRUCTION.	<b>APPROVED</b> B.M. 654265 (633392.694, 5525026.192) ELEV. 232.518 DESIGNED BY DBW/RTP DRAWN BY TJH CHECKED BY ORIGINAL SIGNED BY TARAN J. PETERS APPROVED BY ORIGINAL SIGNED BY DAVE P. KRAHN HOR. SCALE AS NOTED VERTICAL RELEASED FOR CONSTRUCTION ORIGINAL SIGNED BY RANDY FINGAS DATE 04/29/09	<b>ENGINEER'S SEAL</b> PROVINCE OF MANITOBA ORIGINAL SIGNED BY T.J. PETERS 04-29-09 Member 22309 REGISTERED PROFESSIONAL ENGINEER CONSULTANT PROJECT NO. 088813	<b>THE CITY OF WINNIPEG</b> <b>TRANSIT DEPARTMENT</b> SOUTHWEST RAPID TRANSIT CORRIDOR - STAGE 1 TRANSITWAY CONSTRUCTION, DONALD/HARKNESS RECONSTRUCTION & ASSOCIATED WORKS CROSS SECTIONS - STA. 12+900 TO 13+060	CITY DRAWING NUMBER P-3299-41 SHEET 41 OF 64 CONSULTANT DRAWING NUMBER C3-C3023-T
--	--	---	--	---

G:\CAD\088813\Contract\Contract 3-Donald Street\Roadway\C1-501-Cross Sections.dwg