

233.0

233.0

232.5

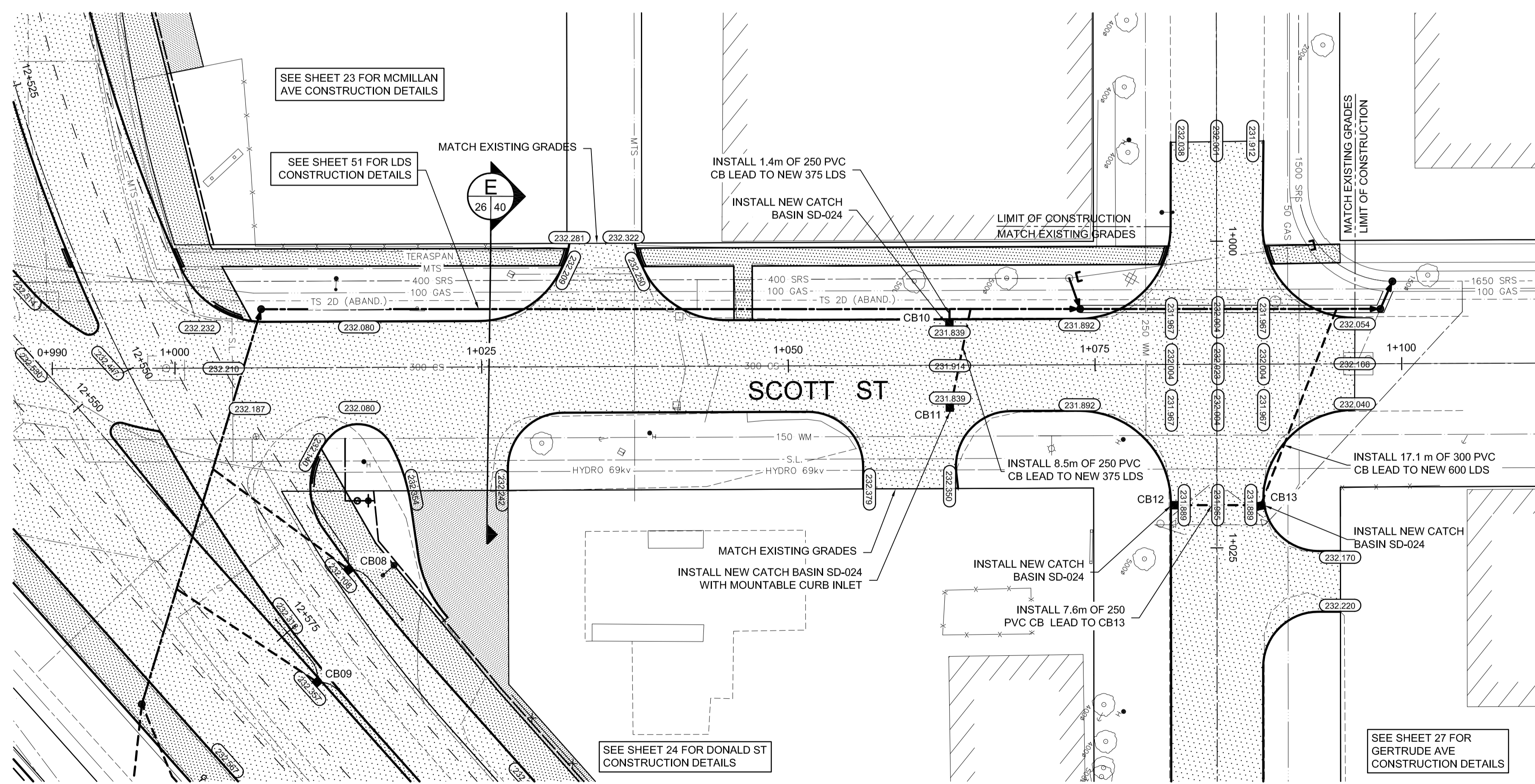
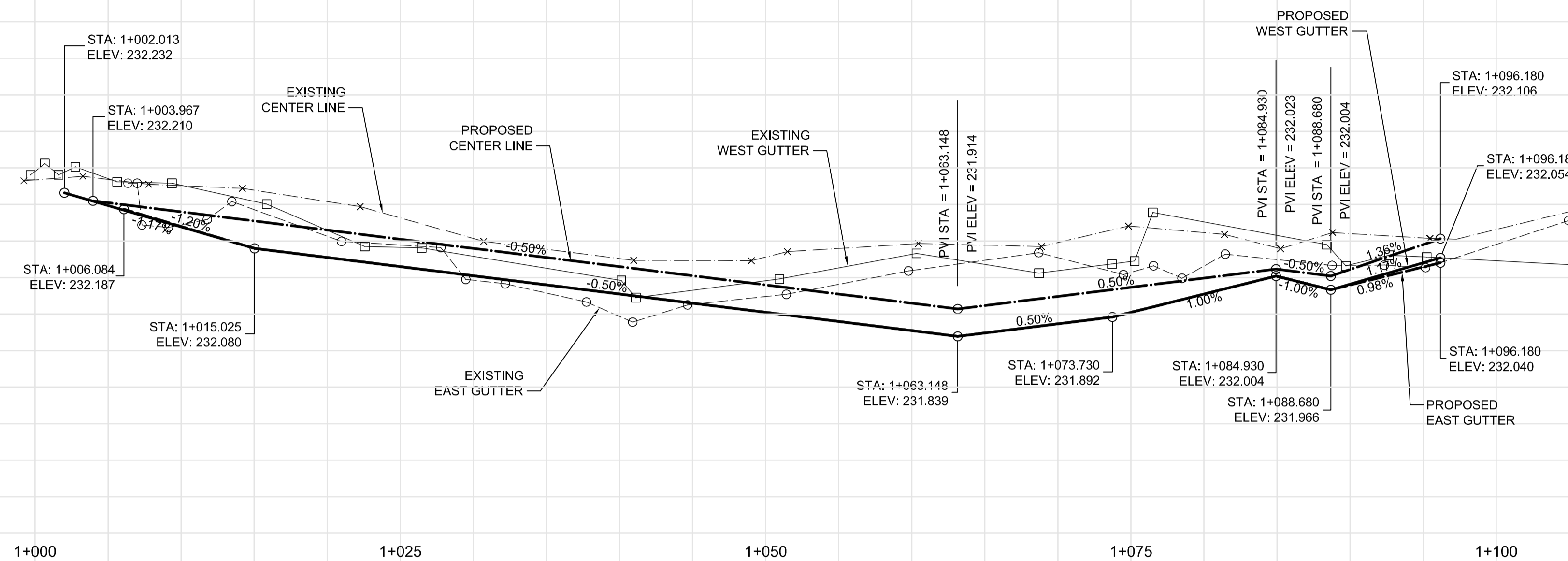
232.5

232.0

232.0

231.5

231.5



- CONSTRUCTION NOTES:**
- CONTRACTOR SHALL TAKE PRECAUTIONARY STEPS TO AVOID DAMAGE FROM CONSTRUCTION ACTIVITIES TO EXISTING BOULEVARDS AND TREES WITHIN THE LIMITS OF CONSTRUCTION.
 - LOCATION OF EXISTING SERVICES ARE TO BE CONFIRMED IN THE FIELD BY THE CONTRACTOR.
 - TIE-INS TO BE VERIFIED IN THE FIELD BY THE CONTRACT ADMINISTRATOR.
 - LIMITS OF SIDEWALK RENEWALS TO BE FINALIZED IN THE FIELD BY THE CONTRACT ADMINISTRATOR.
 - BOULEVARD REPLACEMENT TO BE FINALIZED IN THE FIELD BY THE CONTRACT ADMINISTRATOR.
 - BASE LINE ALONG CENTER OF SCOTT STREET.
 - FOR ADJUSTMENTS AND REMOVALS SEE PAGES 5 TO 10 OF 64.
 - CB LEADS TO BE INSTALLED AT MIN. 1.0% SLOPE OR AS DIRECTED BY CONTRACT ADMINISTRATOR.
 - REMOVE EXISTING FENCE AND PLACE AS TEMPORARY FENCE TO PREVENT ACCESS TO CN RAIL.

METRIC
WHOLE NUMBERS INDICATE MILLIMETRES
DECIMALIZED NUMBERS INDICATE METRES.

WARNING
IF POWER EQUIPMENT OR EXPLOSIVES ARE TO BE USED FOR EXCAVATION ON THIS PROJECT THE CONTRACTOR MUST:

- NOTIFY THE GAS COMPANY OF THE PROPOSED LOCATION OF EXCAVATION.
- TAKE PRECAUTION TO AVOID DAMAGE TO GAS COMPANY INSTALLATIONS. SEE PROVINCIAL REGULATION 210/72 FOR DETAILS.

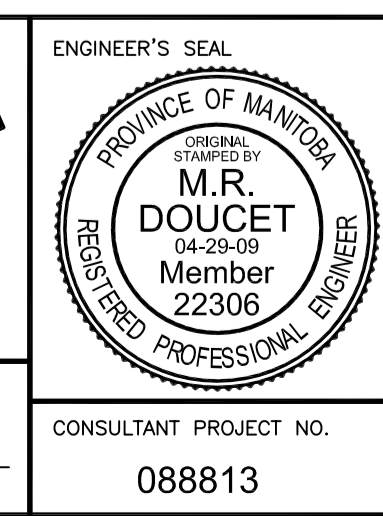
#	COORDINATES		RIM ELEV.	SUMP ELEV.	STATION	PIPE LEAD	LEAD INV.	INV. AT MAIN
	NORTHING	EASTING						
CB08	5526595.506	633692.723	232.108	229.758		13.7m - 250mm	230.358	227.524
CB09	5526597.642	633701.975	232.357	230.007		13.7m - 250mm	230.607	227.779
CB10	5526632.140	633658.092	231.839	229.489	1+063.15	1.4m - 250mm	230.089	225.751
CB11	5526628.773	633652.008	231.839	229.489	1+063.15	8.5m - 250mm	230.089	225.708
CB12	5526651.625	633656.137	231.889	229.739	1+081.17	7.6m - 250mm	230.339	230.139
CB13	5526628.773	633652.008	231.889	229.539	1+088.67	15.9m - 300mm	230.139	225.256

NOTE: ALL COORDINATES SHOWN ON DRAWINGS ARE NAD 83 UTM.
COMBINED SCALE FACTOR TO OBTAIN GROUND DISTANCES IS 0.9997688



LOCATION UNDERGROUND	APPROVED STRUCTURES	B.M. 654265 (633392.694, 5525026.192) ELEV. 232.518	DESIGNED BY MRD
SUPV. U/G STRUCTURES COMMITTEE	DATE		DRAWN BY MRD/TJH
			CHECKED BY ORIGINAL SIGNED BY TARAN J. PETERS
			APPROVED BY ORIGINAL SIGNED BY DAVE P. KRAHN
			HOR. SCALE 1 : 250
			VERTICAL 1 : 10
			RELEASED FOR CONSTRUCTION ORIGINAL SIGNED BY RANDY FINGAS
			CONSULTANT PROJECT NO. 088813
			DATE 04/29/09
			DATE 04/29/09

NO.	REVISIONS	DATE	BY
2	ISSUED FOR TENDER	04/29/09	TJP
1	SUBMITTED FOR 95% REVIEW	02/13/09	TJP



THE CITY OF WINNIPEG TRANSIT DEPARTMENT

Winnipeg

SOUTHWEST RAPID TRANSIT CORRIDOR - STAGE 1
TRANSITWAY CONSTRUCTION, DONALD/HARKNESS RECONSTRUCTION & ASSOCIATED WORKS

PAVING & GRADING - SCOTT ST.

CITY DRAWING NUMBER P-3299-26
SHEET 26 OF 64
CONSULTANT DRAWING NUMBER C3-C3008-T

G:\CAD\088813\Contract\Contract_3-Donald_Street\Current\Roadway\C1-401-Paving-Grading.dwg