

- CONSTRUCTION NOTES:**
- CONTRACTOR SHALL TAKE PRECAUTIONARY STEPS TO AVOID DAMAGE FROM CONSTRUCTION ACTIVITIES TO EXISTING BOULEVARDS AND TREES WITHIN THE LIMITS OF CONSTRUCTION.
 - LOCATION OF EXISTING SERVICES ARE TO BE CONFIRMED IN THE FIELD BY THE CONTRACTOR.
 - TIE-INS TO BE VERIFIED IN THE FIELD BY THE CONTRACT ADMINISTRATOR.
 - LIMITS OF SIDEWALK RENEWALS TO BE FINALIZED IN THE FIELD BY THE CONTRACT ADMINISTRATOR.
 - BOULEVARD REPLACEMENT TO BE FINALIZED IN THE FIELD BY THE CONTRACT ADMINISTRATOR.
 - BASE LINES ALONG NORTHBOUND WEST GUTTER AND SOUTHBOUND EAST GUTTER.
 - FOR ADJUSTMENTS AND REMOVALS SEE PAGES 5 TO 10 OF 64.
 - CB LEADS TO BE INSTALLED AT MIN. 1.0% SLOPE OR AS DIRECTED BY CONTRACT ADMINISTRATOR.
 - REMOVE EXISTING FENCE AND PLACE AS TEMPORARY FENCE TO PREVENT ACCESS TO CN RAIL.

METRIC

WHOLE NUMBERS INDICATE MILLIMETRES
 DECIMALIZED NUMBERS INDICATE METRES.

- WARNING**
- IF POWER EQUIPMENT OR EXPLOSIVES ARE TO BE USED FOR EXCAVATION ON THIS PROJECT THE CONTRACTOR MUST:
- NOTIFY THE GAS COMPANY OF THE PROPOSED LOCATION OF EXCAVATION.
 - TAKE PRECAUTION TO AVOID DAMAGE TO GAS COMPANY INSTALLATIONS. SEE PROVINCIAL REGULATION 210/72 FOR DETAILS.

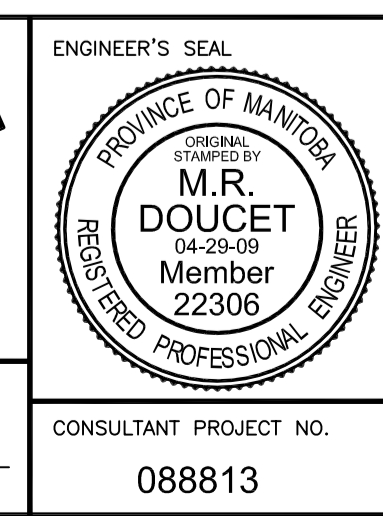
#	COORDINATES		RIM ELEV.	SUMP ELEV.	STATION	PIPE LEAD	LEAD INV.	INV. AT MAIN
	NORTHING	EASTING						
CB08	5526595.506	633692.723	232.108	229.758	12+573.94	13.7m - 250mm	230.358	227.524
CB09	5526597.642	633701.975	232.357	230.007	12+579.64	13.7m - 250mm	230.607	227.779

NOTE: ALL COORDINATES SHOWN ON DRAWINGS ARE NAD 83 UTM.
 COMBINED SCALE FACTOR TO OBTAIN GROUND DISTANCES IS 0.9997688



LOCATION UNDERGROUND	APPROVED STRUCTURES	B.M. 654265 (633392.694, 5525026.192) ELEV. 232.518	DESIGNED BY MRD
SUPY. U/G STRUCTURES COMMITTEE	DATE		DRAWN BY MRD/TJH
			CHECKED BY ORIGINAL SIGNED BY TARAN J. PETERS
			APPROVED BY ORIGINAL SIGNED BY DAVE P. KRAHN
			HOR. SCALE 1 : 250
			VERTICAL 1 : 10
			RELEASED FOR CONSTRUCTION ORIGINAL SIGNED BY RANDY FINGAS
			CONSULTANT PROJECT NO. 088813

NO.	REVISIONS	DATE	BY
2	ISSUED FOR TENDER	04/29/09	TJP
1	SUBMITTED FOR 95% REVIEW	02/13/09	TJP



THE CITY OF WINNIPEG TRANSIT DEPARTMENT

Winnipeg

SOUTHWEST RAPID TRANSIT CORRIDOR - STAGE 1
 TRANSITWAY CONSTRUCTION, DONALD/HARKNESS RECONSTRUCTION & ASSOCIATED WORKS

CITY DRAWING NUMBER: P-3299-24
 SHEET 24 OF 64

CONSULTANT DRAWING NUMBER: C3-C3006-T

PAVING & GRADING - DONALD ST. - STA. 12+540 TO 12+690

G:\CAD\088813\Contract\Contract 3-Donald Street\Roadway\C1-401-Paving-Grading.dwg