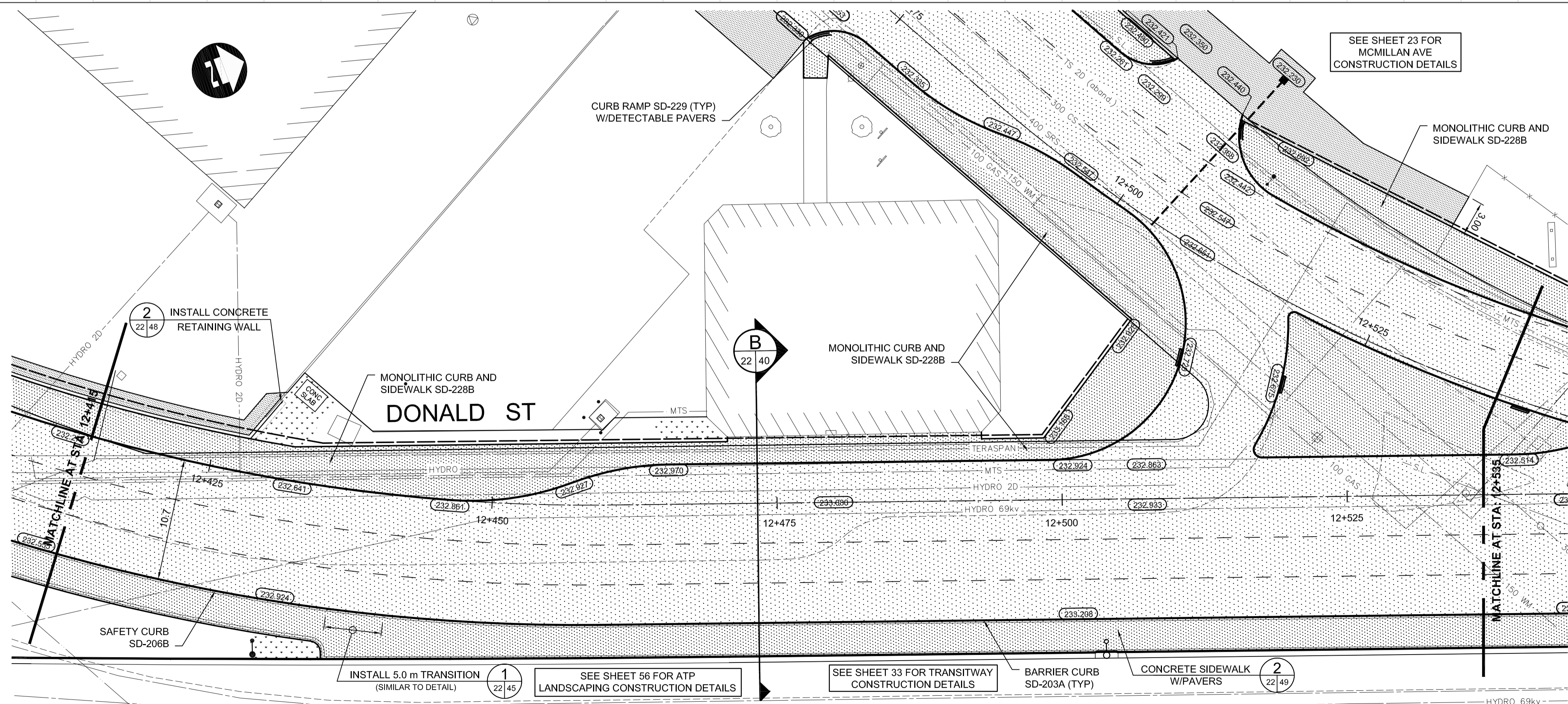
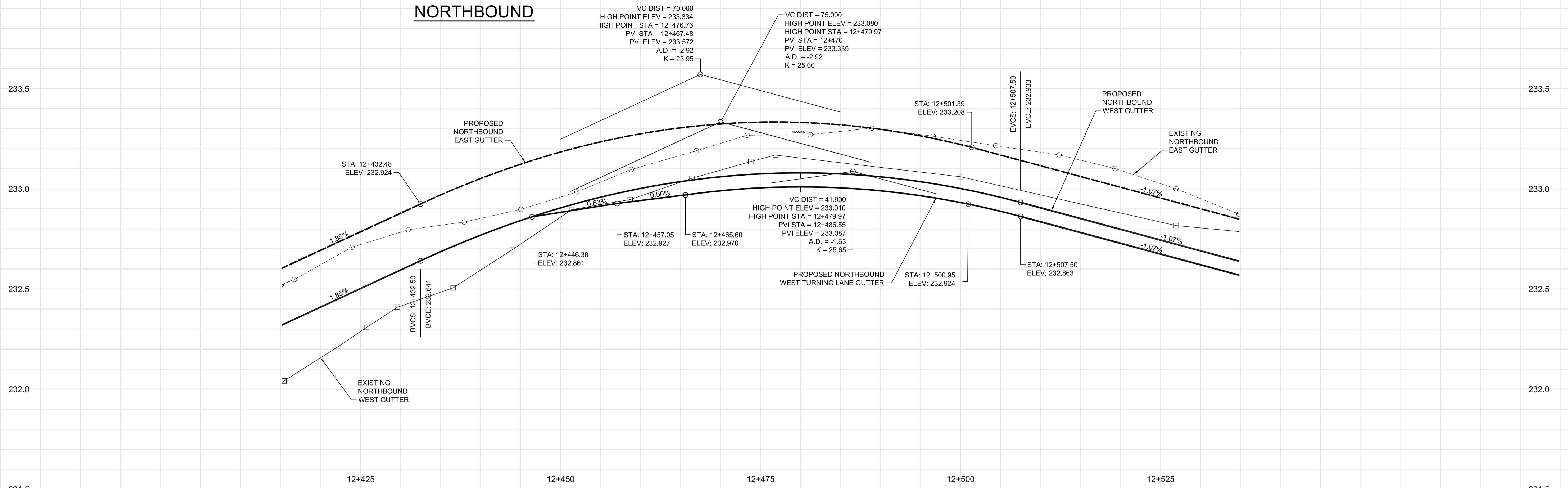


NORTHBOUND



CONSTRUCTION NOTES:

1. CONTRACTOR SHALL TAKE PRECAUTIONARY STEPS TO AVOID DAMAGE FROM CONSTRUCTION ACTIVITIES TO EXISTING BOULEVARDS AND TREES WITHIN THE LIMITS OF CONSTRUCTION.
2. LOCATION OF EXISTING SERVICES ARE TO BE CONFIRMED IN THE FIELD BY THE CONTRACTOR.
3. TIE-INS TO BE VERIFIED IN THE FIELD BY THE CONTRACT ADMINISTRATOR.
4. LIMITS OF SIDEWALK RENEWALS TO BE FINALIZED IN THE FIELD BY THE CONTRACT ADMINISTRATOR.
5. BOULEVARD REPLACEMENT TO BE FINALIZED IN THE FIELD BY THE CONTRACT ADMINISTRATOR.
6. BASE LINE ALONG NORTHBOUND WEST GUTTER.
7. FOR ADJUSTMENTS AND REMOVALS SEE PAGES 5 TO 10 OF 64.
8. CB LEADS TO BE INSTALLED AT MIN. 1.0% SLOPE OR AS DIRECTED BY CONTRACT ADMINISTRATOR.
9. REMOVE EXISTING FENCE AND PLACE AS TEMPORARY FENCE TO PREVENT ACCESS TO CN RAIL.

METRIC

WHOLE NUMBERS INDICATE MILLIMETRES
DECIMALIZED NUMBERS INDICATE METRES.

WARNING

IF POWER EQUIPMENT OR EXPLOSIVES ARE TO BE USED FOR EXCAVATION ON THIS PROJECT THE CONTRACTOR MUST:

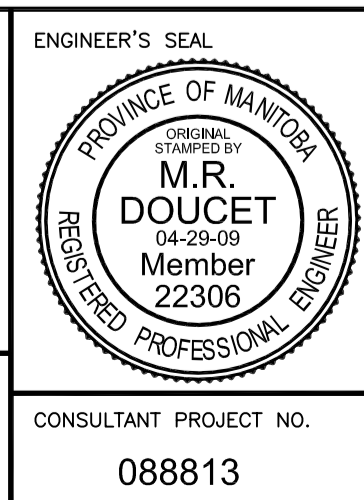
1. NOTIFY THE GAS COMPANY OF THE PROPOSED LOCATION OF EXCAVATION.
2. TAKE PRECAUTION TO AVOID DAMAGE TO GAS COMPANY INSTALLATIONS. SEE PROVINCIAL REGULATION 210/72 FOR DETAILS.



| | | |
|---------------------------------|--|--|
| LOCATION UNDERGROUND STRUCTURES | APPROVED STRUCTURES | B.M. 654265 (633392.694, 5525026.192) ELEV. 232.518 |
| SUPV. U/G STRUCTURES COMMITTEE | DATE | |
| NOTE: | LOCATION OF UNDERGROUND STRUCTURES AS SHOWN ARE BASED ON THE BEST INFORMATION AVAILABLE, BUT NO GUARANTEE IS GIVEN THAT ALL EXISTING UTILITIES ARE SHOWN OR THAT THE GIVEN LOCATIONS ARE EXACT. CONFIRMATION OF EXISTENCE AND EXACT LOCATION OF ALL SERVICES MUST BE OBTAINED FROM THE INDIVIDUAL UTILITIES BEFORE PROCEEDING WITH CONSTRUCTION. | |

| | | |
|---------------|---------------------------------------|-----|
| DESIGNED BY | MRD | |
| DRAWN BY | MRD/TJH | |
| CHECKED BY | ORIGINAL SIGNED BY TARAN J. PETERS | |
| APPROVED BY | ORIGINAL SIGNED BY DAVE P. KRAHN | |
| HOR. SCALE | 1 : 250 | |
| VERTICAL | 1 : 10 | |
| HOR. SCALE | 1 : 250 | |
| VERTICAL | 1 : 10 | |
| NO. REVISIONS | DATE | BY |
| 2 | 04/29/09 | TJP |
| 1 | 02/13/09 | TJP |

| | | |
|----------------------------|--------------|----------|
| RELEASSED FOR CONSTRUCTION | DATE | 04/29/09 |
| ORIGINAL SIGNED BY | RANDY FINGAS | |



THE CITY OF WINNIPEG TRANSIT DEPARTMENT

SOUTHWEST RAPID TRANSIT CORRIDOR - STAGE 1
TRANSITWAY CONSTRUCTION, DONALD/HARKNESS
RECONSTRUCTION & ASSOCIATED WORKS

PAVING & GRADING - DONALD ST. - STA.
12+400 TO 12+540

CITY DRAWING NUMBER: P-3299-22
SHEET OF: 22 OF 64
CONSULTANT DRAWING NUMBER: C3-C3004-T

CONSULTANT PROJECT NO.: 088813