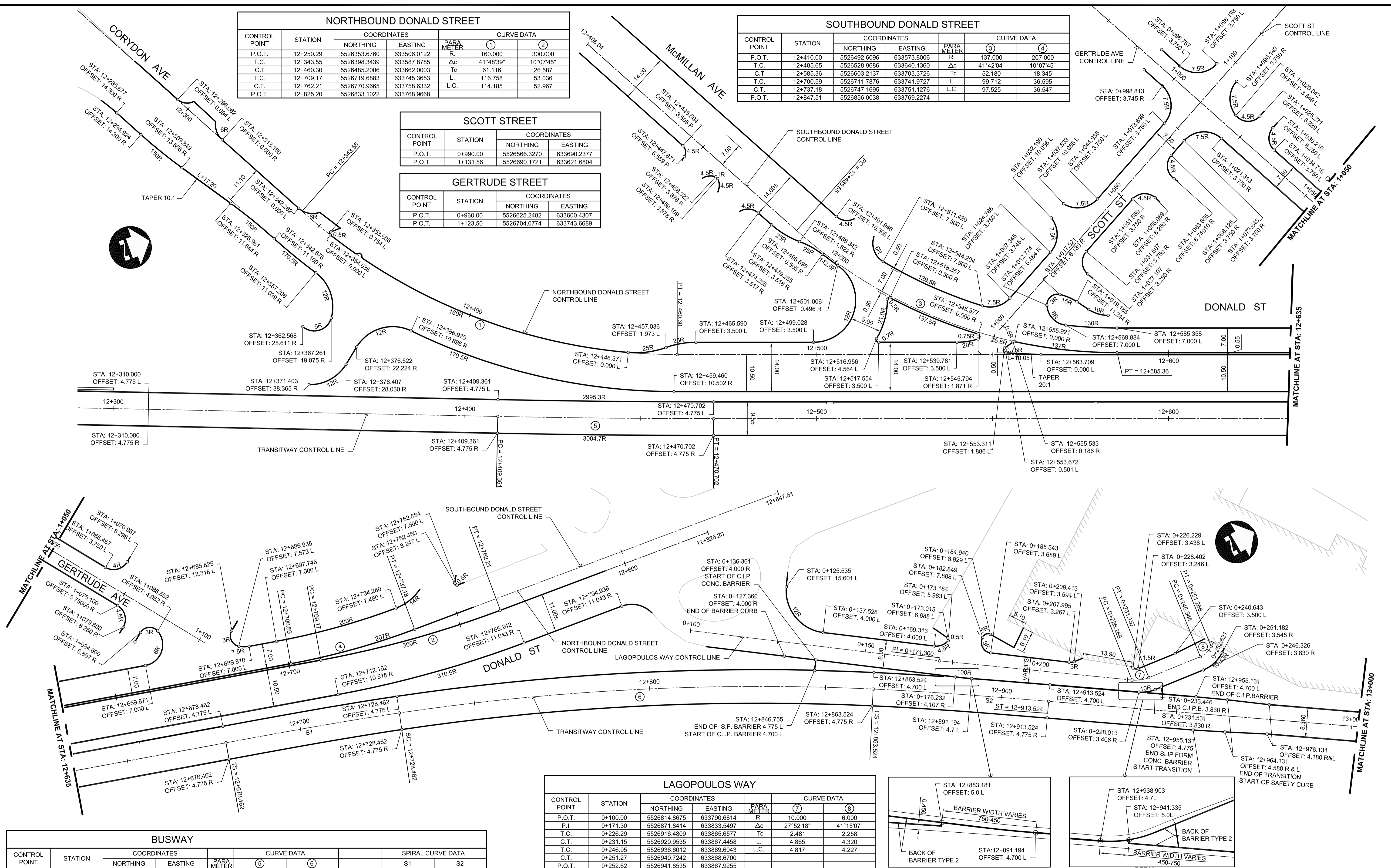


NORTHBOUND DONALD STREET					
CONTROL POINT	STATION	COORDINATES		CURVE DATA	
		NORTHING	EASTING	PARA METER	①
P.O.T.	12+250.29	5526353.6760	633506.0122	R.	160.000
T.C.	12+343.55	5526398.3439	633587.8785	Δc	41°48'39"
C.T.	12+460.30	5526485.2006	633662.0003	Tc	61.116
T.C.	12+709.17	5526719.6883	633745.3653	L.	116.758
C.T.	12+762.21	5526770.9665	633758.6332	L.C.	114.185
P.O.T.	12+825.20	5526833.1022	633768.9668		52.967

SOUTHBOUND DONALD STREET					
CONTROL POINT	STATION	COORDINATES		CURVE DATA	
		NORTHING	EASTING	PARA METER	③
P.O.T.	12+410.00	5526492.6096	633573.8006	R.	137.000
T.C.	12+485.65	5526528.9686	633640.1360	Δc	41°42'04"
C.T.	12+585.36	5526603.2137	633703.3726	Tc	52.180
T.C.	12+700.59	5526711.7876	633741.9727	L.	99.712
C.T.	12+737.18	5526747.1695	633751.1276	L.C.	97.525
P.O.T.	12+847.51	5526856.0038	633769.2274		36.547

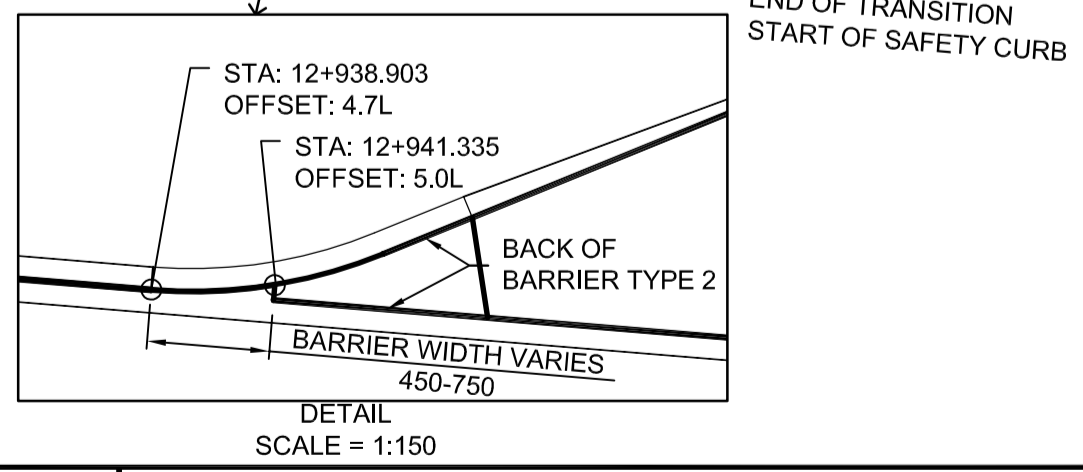
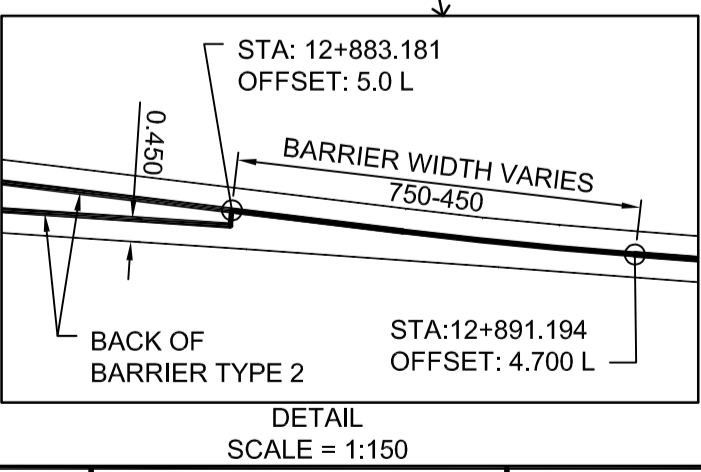
SCOTT STREET			
CONTROL POINT	STATION	COORDINATES	
		NORTHING	EASTING
P.O.T.	0+990.00	5526566.3270	633690.2377
P.O.T.	1+131.56	5526690.1721	633621.6804

GERTRUDE STREET			
CONTROL POINT	STATION	COORDINATES	
		NORTHING	EASTING
P.O.T.	0+960.00	5526625.2482	633600.4307
P.O.T.	1+123.50	5526704.0774	633743.6689



BUSWAY							
CONTROL POINT	STATION	COORDINATES		CURVE DATA		SPIRAL CURVE DATA	
		NORTHING	EASTING	PARA METER	⑤	S1	S2
P.O.T.	12+310.00	5526338.3357	633626.2812	R.	3000.000	700.000	LENGTH 50.00
T.C.	12+409.36	5526431.2561	633661.4723	Δc	11°03'18"	11°03'18"	THETA 2°02'47"
C.T.	12+470.70	5526488.8393	633682.6098	Tc	30.672	67.741	S. TANGENT 16.67
T.S.	12+678.46	5526684.5962	633752.2054	L.	61.341	135.062	L. TANGENT 33.34
S.C.	12+728.46	5526731.5017	633769.5129	L.C.	61.340	134.852	
C.S.	12+863.52	5526851.5005	633831.0385				
S.T.	12+913.52	5526892.9321	633859.0232				

LAGOPOULOS WAY					
CONTROL POINT	STATION	COORDINATES		CURVE DATA	
		NORTHING	EASTING	PARA METER	⑦
P.O.T.	0+100.00	5526814.8675	633790.6814	R.	10.000
P.I.	0+171.30	5526871.8414	633833.5497	Δc	27°52'18"
T.C.	0+226.29	5526916.4809	633865.6577	Tc	2.481
C.T.	0+231.15	5526920.9535	633867.4458	L.	4.865
T.C.	0+246.95	5526936.6012	633869.6043	L.C.	4.817
C.T.	0+251.27	5526940.7242	633868.8700		4.227
P.O.T.	0+252.62	5526941.8535	633867.9255		



LOCATION UNDERGROUND APPROVED STRUCTURES SUPPLY U/G STRUCTURES COMMITTEE DATE _____ NOTE: LOCATION OF UNDERGROUND STRUCTURES AS SHOWN ARE BASED ON THE BEST INFORMATION AVAILABLE, BUT NO GUARANTEE IS GIVEN THAT ALL EXISTING UTILITIES ARE SHOWN OR THAT THE GIVEN LOCATIONS ARE EXACT. CONFIRMATION OF EXISTENCE AND EXACT LOCATION OF ALL SERVICES MUST BE OBTAINED FROM THE INDIVIDUAL UTILITIES BEFORE PROCEEDING WITH CONSTRUCTION.	B.M. 654265 (633392.694, 5525026.192) ELEV. 232.518 DESIGNED BY RTP DRAWN BY TJH CHECKED BY ORIGINAL SIGNED BY TARAN J. PETERS APPROVED BY ORIGINAL SIGNED BY DAVE P. KRAHN HOR. SCALE 1 : 500 VERTICAL RELEASED FOR CONSTRUCTION ORIGINAL SIGNED BY RANDY FINGAS DATE 04/29/09	ENGINEER'S SEAL CONSULTANT PROJECT NO. 088813	THE CITY OF WINNIPEG TRANSIT DEPARTMENT SOUTHWEST RAPID TRANSIT CORRIDOR - STAGE 1 TRANSITWAY CONSTRUCTION, DONALD/HARKNESS RECONSTRUCTION & ASSOCIATED WORKS CITY DRAWING NUMBER P-3299-19 SHEET 19 OF 64 CONSULTANT DRAWING NUMBER C3-C3001-T
---	---	--	---

APEGM
 Certificate of Authorization
Dillon Consulting Limited (MB)
 No. 1789 Date: _____

NOTE: ALL COORDINATES SHOWN ON DRAWINGS ARE NAD 83 UTM. COMBINED SCALE FACTOR TO OBTAIN GROUND DISTANCES IS 0.9997688

G:\CAD\088813\Contract\Current\Roadway\C1-301-Geometry.dwg