

- CONSTRUCTION NOTES:**
- SEWER INSTALLATION BY TRENCHLESS OR OPEN CUT METHODS EXCEPT WHERE TRENCHLESS INSTALLATION IS SPECIFICALLY INDICATED.
 - LOCATION OF EXISTING UTILITIES TO BE CONFIRMED IN THE FIELD BY THE CONTRACTOR.
 - CONTRACTOR TO PLUG ALL CB LEAD JUNCTIONS AND TO RECORD COORDINATES OF THEIR LOCATIONS.
 - ALL ABANDONED BUILDING FOUNDATIONS IN THE PATH OF LDS CONSTRUCTION TO BE REMOVED BY CONTRACTOR.
 - CONTRACTOR TO PLUG ANY ABANDONED PIPES THAT ARE BROKEN DURING CONSTRUCTION.
 - FUTURE SWALE ALONG WEST SIDE OF PROPOSED BUSWAY TO BE CONSTRUCTED BY OTHERS.
 - OPEN-CUT EXCAVATIONS TO BE STRAIGHT WALLED SHAFTS SUPPORTED BY SHORING CAGES.
 - CONTRACTOR TO RESTORE CN SERVICE ROAD TO EQUAL OR BETTER THAN ORIGINAL CONDITION.

METRIC
WHOLE NUMBERS INDICATE MILLIMETRES
DECIMALIZED NUMBERS INDICATE METRES.

- WARNING**
- IF POWER EQUIPMENT OR EXPLOSIVES ARE TO BE USED FOR EXCAVATION ON THIS PROJECT THE CONTRACTOR MUST:
- NOTIFY THE GAS COMPANY OF THE PROPOSED LOCATION OF EXCAVATION.
 - TAKE PRECAUTION TO AVOID DAMAGE TO GAS COMPANY INSTALLATIONS. SEE PROVINCIAL REGULATION 210/72 FOR DETAILS.

NOTE: CHAINAGES SHOWN ARE ALONG CL OF PIPE.

COORDINATES		RIM ELEV.	#	STATION	INVERT			
NORTHING	EASTING				N	S	E	W
5524597.256	633127.582	233.032	MH06	1+530.00	227.510	227.660		
5524696.251	633162.582	232.742	MH07	1+635.00	227.322	227.352		
5524795.246	633197.582	232.878	MH08	1+740.00	227.135	227.165		

NOTE: ALL COORDINATES SHOWN ON DRAWINGS ARE NAD 83 UTM COMBINED SCALE FACTOR TO OBTAIN GROUND DISTANCES 0.9997688



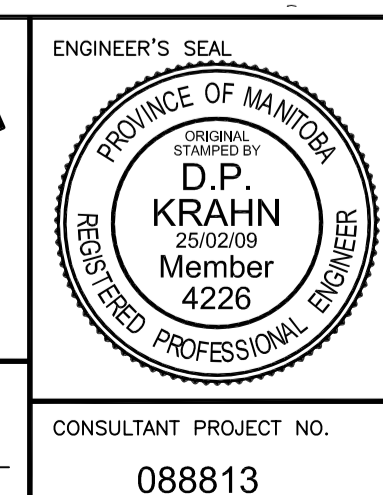
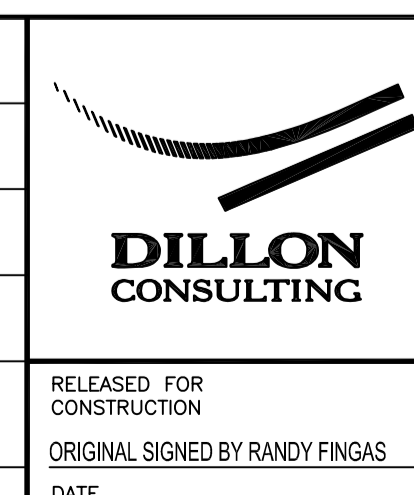
LOCATION APPROVED UNDERGROUND STRUCTURES

ORIGINAL SIGNED BY DERRICK SAEDEL 23/02/09

SUPPLY U/G STRUCTURES COMMITTEE DATE

NOTE: LOCATION OF UNDERGROUND STRUCTURES AS SHOWN ARE BASED ON THE BEST INFORMATION AVAILABLE BUT NO GUARANTEE IS GIVEN THAT ALL EXISTING UTILITIES ARE SHOWN OR THAT THE GIVEN LOCATIONS ARE EXACT. CONFIRMATION OF EXISTENCE AND EXACT LOCATION OF ALL SERVICES MUST BE OBTAINED FROM THE INDIVIDUAL UTILITIES BEFORE PROCEEDING WITH CONSTRUCTION.

B.M. 654265 (633392.694, 5525026.192) ELEV. 232.518	DESIGNED BY C.L.P.
	DRAWN BY A.J.P.
	CHECKED BY ORIGINAL SIGNED BY SHANE COOPER
	APPROVED BY ORIGINAL SIGNED BY DAVE KRAHN
2 ISSUED FOR TENDER 25/02/09 S.C.C.	HOR. SCALE 1 : 500
1 ISSUED FOR 95% REVIEW 02/02/09 C.L.P.	VERTICAL 1 : 50
NO. REVISIONS	DATE BY DATE 25-02-09



THE CITY OF WINNIPEG TRANSIT DEPARTMENT

SOUTHWEST RAPID TRANSIT CORRIDOR - STAGE 1
LAND DRAINAGE CONSTRUCTION & ASSOCIATED WORKS

FORT ROUGE YARDS - PLAN & PROFILE - STA. 1+480 TO 1+810

CITY DRAWING NUMBER LD-5284
SHEET 7 OF 15
CONSULTANT DRAWING NUMBER C1-U4003

CONSULTANT PROJECT NO. 088813

RELEASED FOR CONSTRUCTION ORIGINAL SIGNED BY RANDY FINGAS DATE

G:\CAD\088813\Contract\Contract 1-LDS-Jubilee to Osborne\C1-410-LDS-Busway.dwg