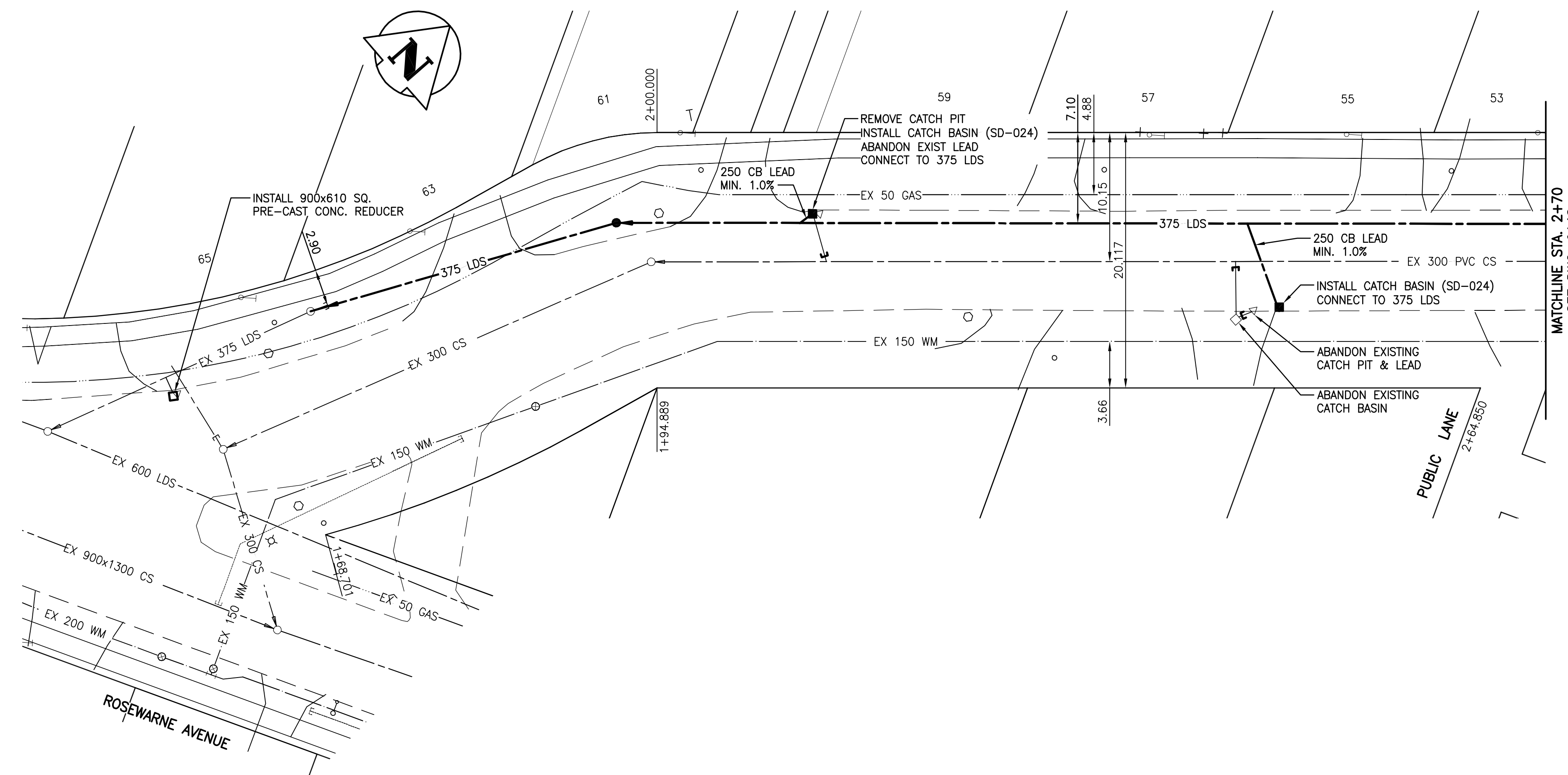


KINGSTON ROW



WATER SERVICE INFORMATION

ADDRESS	SIZE (mm) & TYPE (STREET)	DIST TO PROP	SHORT & LONG MEASUREMENT	CORP MEASUREMENT	REMARKS
53 KINGSTON ROW RESIDENTIAL	19 COPPER	-	6.4 LR CORNER OF HOUSE 12.8 FROM HYDRO POLE	6.4 W/DHL	UPDATED STOP COCK LOCATION
55 KINGSTON ROW RESIDENTIAL	19 COPPER	-	7.3 E/WHL	-	UPDATED STOP COCK LOCATION
57 KINGSTON ROW RESIDENTIAL	-	-	-	-	-
59 KINGSTON ROW RESIDENTIAL	-	-	-	-	-
61 KINGSTON ROW RESIDENTIAL	-	-	-	-	-
63 KINGSTON ROW RESIDENTIAL	-	-	-	-	-
65 KINGSTON ROW RESIDENTIAL	-	-	-	-	-

SEWER SERVICE INFORMATION

ADDRESS	SIZE & TYPE	PROPERTY LINE LOCATION	JUNCTION LOCATION
53 KINGSTON ROW	-	-	-
55 KINGSTON ROW	-	-	-
57 KINGSTON ROW	-	-	-
59 KINGSTON ROW	-	-	-
61 KINGSTON ROW	-	-	-
63 KINGSTON ROW	-	-	-
65 KINGSTON ROW	-	-	-

WARNING
 IF POWER EQUIPMENT OR EXPLOSIVES ARE TO BE USED FOR EXCAVATION ON THIS PROJECT THE CONTRACTOR MUST:
 1) NOTIFY THE GAS COMPANY OF THE PROPOSED LOCATION OF EXCAVATION.
 2) TAKE PRECAUTION TO AVOID DAMAGE TO GAS COMPANY INSTALLATIONS.
 SEE PROVINCIAL REGULATION 140/92 FOR DETAILS

METRIC
 WHOLE NUMBERS INDICATE MILLIMETRES
 DECIMALIZED NUMBERS INDICATE METRES

- CONSTRUCTION NOTES:**
- ALL NEW SEWERS AND SEWER SERVICES TO BE INSTALLED BY TRENCHLESS METHODS.
 - SEWER SERVICE LOCATIONS TO BE CONFIRMED PRIOR TO CONSTRUCTION.
 - EXCAVATIONS WITHIN 1.0m OF PAVEMENT TO BE BACKFILLED WITH CLASS 3 MATERIAL.
 - NEW SEWER SERVICES RENEWED TO PROPERTY LINE TO HAVE A MINIMUM SLOPE OF 1.0%.

BID OPPORTUNITY NO. 921-2009



EXISTING	LEGEND-PLAN	PROPOSED	EXISTING	LEGEND-PLAN	PROPOSED	EXISTING	LEGEND-PROFILE	PROPOSED
150 WM	WATERMAIN	150 WM	HYDRO		150 WM	WATERMAIN		150 WM
Hydrant symbol	HYDRANT	Hydrant symbol	M.T.S.		Hydrant symbol	HYDRANT, VALVE		Hydrant symbol
Valve symbol	VALVE	Valve symbol	CONCRETE		Valve symbol	LAND DRAINAGE SEWER		Valve symbol
300 LDS	LAND DRAINAGE SEWER	300 LDS	ASPHALT		300 LDS	WASTE WATER SEWER		300 LDS
250 WWS	WASTE WATER SEWER	250 WWS	SIDEWALK		250 WWS	PROFILE		250 WWS
Manhole symbol	MANHOLE	Manhole symbol	PROPERTY LINE		Manhole symbol			Manhole symbol
Catch basin symbol	CATCH BASIN	Catch basin symbol	SURVEY BAR		Catch basin symbol			Catch basin symbol
Curb inlet symbol	CURB INLET	Curb inlet symbol			Curb inlet symbol			Curb inlet symbol
Junctions symbol	JUNCTIONS	Junctions symbol			Junctions symbol			Junctions symbol
Gas symbol	GAS	Gas symbol			Gas symbol			Gas symbol

LOCATION APPROVED UNDERGROUND STRUCTURES

DATE: _____

NOTE:
 LOCATION OF UNDERGROUND STRUCTURES AS SHOWN ARE BASED ON THE BEST INFORMATION AVAILABLE BUT NO GUARANTEE IS GIVEN THAT ALL EXISTING UTILITIES ARE SHOWN OR THAT THE GIVEN LOCATIONS ARE EXACT. CONFIRMATION OF EXISTENCE AND EXACT LOCATION OF ALL SERVICES MUST BE OBTAINED FROM THE INDIVIDUAL UTILITIES BEFORE PROCEEDING WITH CONSTRUCTION.

BENCH MARK: S.W. Cor. Kingston Row & Killarney St., Tibit, on top of 0.05m dia. x 2.4m iron pipe, 1.4m N. of S.L. Kingston Row & 11.6m W. of E.L. Killarney St.

NOTE:
 STATIONING IS ALONG C OF ROAD

Stantec Consulting Ltd.
 905 Waverley Street, Winnipeg, Manitoba
 Tel 204-489-5900 Fax 204-453-9012

DESIGNED BY: J.C. CHECKED BY: H.K.
 DRAWN BY: W.A. APPROVED BY: H.K.

HOR. SCALE: 1:250
 VERTICAL: 1:50

RELEASED FOR CONSTRUCTION: _____

THE CITY OF WINNIPEG
 WATER AND WASTE DEPARTMENT
 ENGINEERING DIVISION

KINGSTON ROW
 1ST MH N OF ROSEWARNE AVE. TO
 72.0m N OF 2ND MH N OF ROSEWARNE AVE.

SHEET 1 OF 18
 CAD FILE DRAWING NUMBER 11890c-201-712.dwg
 CITY DRAWING NUMBER 9147

CONSULTANT DRAWING NO. C-201

V:\1170\Draw\11711890\Winnipeg\11890c-201-712.dwg
 2010-02-03 08:29:00 By: wvander