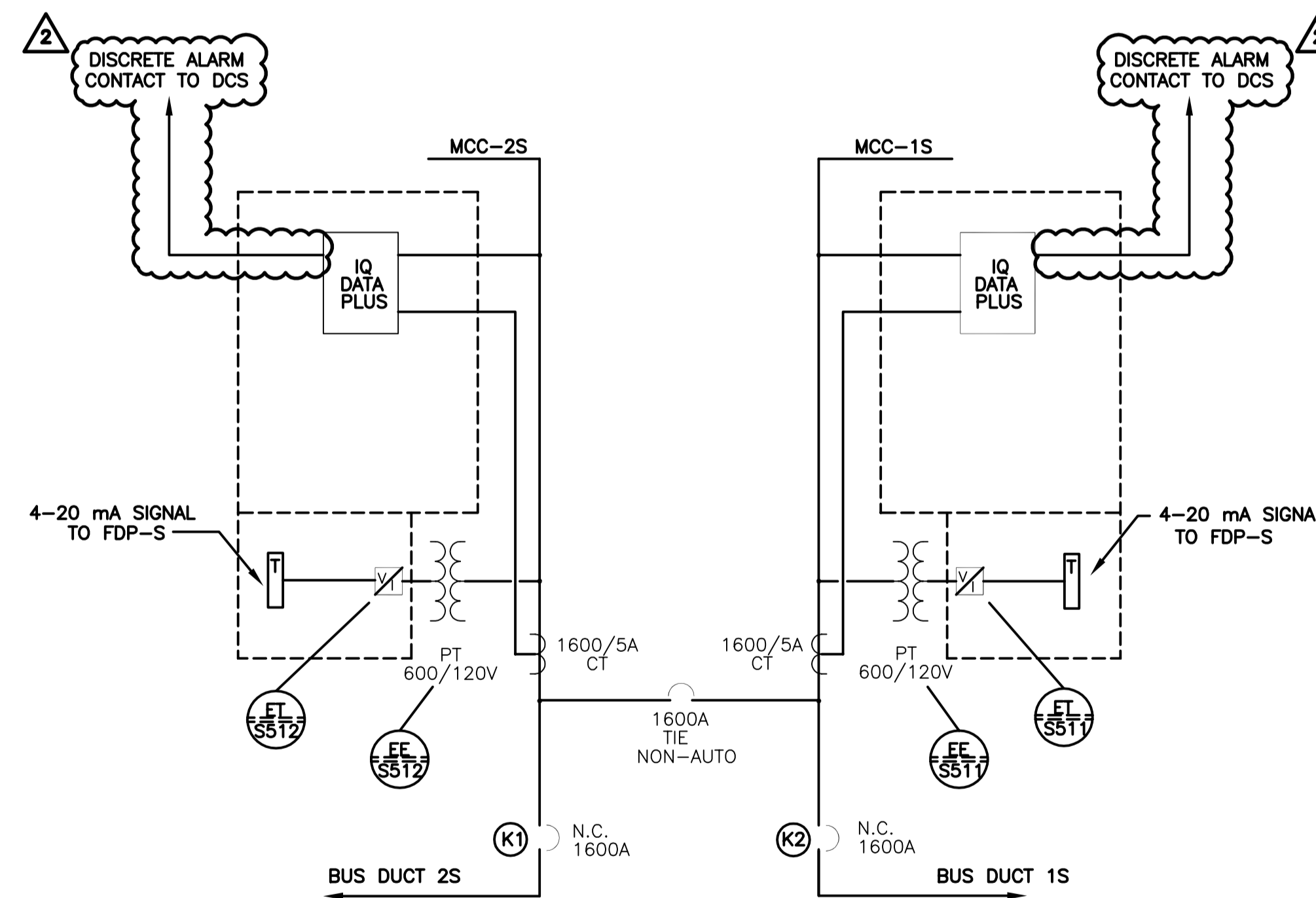


FRONT ELEVATION
MCC 1S & MCC 2S SWITCHGEAR
N.T.S.

MCC 1S & MCC 2S SWITCH GEAR							
UNIT No.	DESCRIPTION	FEEDER		CIRCUIT BREAKER			REMARKS
		CAP IN AMPS	SIZE	VOLTS	FRAME SIZE	TRIP SETTING	
①	600V INCOMING AND TIE LUGS	1600A					
②	600V INCOMING AND TIE LUGS	1600A					
③	CIRCUIT BREAKER	1600A		600V	1600A	1600	KEYINTERLOCK
④	CIRCUIT BREAKER	1600A		600V	1600A	1600	KEYINTERLOCK
⑤	TIE CIRCUIT BREAKER	1600A		600V	1600A	1600	NON-AUTO KEYINTERLOCK
⑥	600V MAIN LUGS	1600A					MCC 1S METERING VIA IQ DATA PLUS
⑦	600V MAIN LUGS	1600A					MCC 2S METERING VIA IQ DATA PLUS

KEY INTERLOCK SCHEDULE	
BREAKER UNIT No.	DESCRIPTION
3	KEY "K1" REMOVABLE ONLY WHEN N.C. BREAKER IS OPENED.
4	KEY "K2" REMOVABLE ONLY WHEN N.C. BREAKER IS OPENED.
5	N.O. BREAKER CAN ONLY BE CLOSED WHEN EITHER KEY "K1" OR "K2" IS INSERTED.



MCC 1S & MCC 2S SWITCHGEAR
SCHEMATIC



SNC-LAVALIN INC.				
148 Notre Dame St. W.				
Winnipeg, Manitoba				
Canada R3P 0K7				
DESIGNED:	N. BRADDO		APPROVED:	C. REIMER
CHECKED:	C. REIMER		DATE:	2009/12/07
PROJECT No.	SUBDIV.	SUBJECT	SERIAL	REV.
112577	0105	47 DD	0511	2

B.M. ELEV.	MACLAREN ENGINEERS INC. WARDROP ENGINEERING INC. ENGINEERING CONSULTANTS		ENGINEER'S SEAL ORIGINAL DRAWING SEALED BY: N. BRADDO SNC-LAVALIN MEMBER 32727 2009/12/07 REV. 02
2	ADDED UNDERVOLTAGE PROT. TO MCC-1S & MCC-2S	12/09 NB	DESIGNED BY: D.B.T. CHECKED BY: DRAWN BY: C.N./V.R. APPROVED BY:
1	AS CONSTRUCTED	06/93 B.T.	HOR. SCALE: N.T.S. VERTICAL: N.T.S.
0	ISSUED FOR TENDER	07/90 RDJ	RELEASED FOR CONSTRUCTION:
NO. REVISIONS	DATE	BY	DATE
			CONSULTANT DRAWING NO. 43525-24-S-E118

THE CITY OF WINNIPEG WORKS AND OPERATIONS DIVISION WATERWORKS, WASTE & DISPOSAL DEPARTMENT	
SOUTH END WATER POLLUTION CONTROL CENTRE	CITY DRAWING NUMBER
SECONDARY CLARIFIER EXPANSION - ELECT. MOTOR CONTROL CENTER 1S & 2S SWITCHGEAR LAYOUT & SCHEMATIC	SHEET OF
SEP-468	