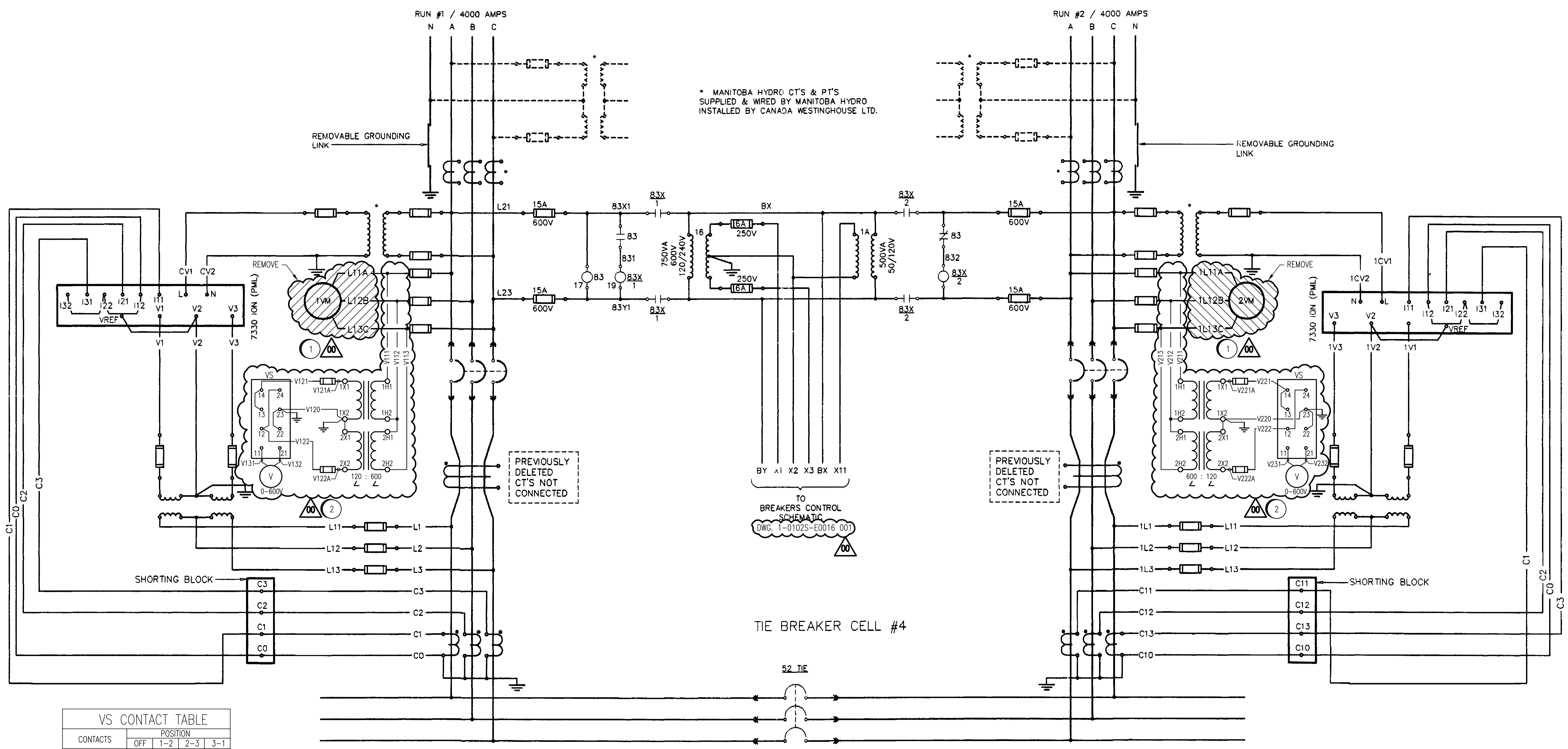


BREAKER 1 CELL #3

MB HYDRO FEEDER 1

MB HYDRO FEEDER 2

BREAKER 2 CELL #5



VS CONTACT TABLE

CONTACTS	POSITION			
	OFF	1-2	2-3	3-1
11-12	-		X	
11-13	-	X		
11-14	-			X
21-22	-		X	
21-23	-	X		
21-24	-			X

- CONSTRUCTION NOTES**
- 1 DISCONNECT & REMOVE UNDERVOLTAGE RELAY 1VM & 2VM IDENTIFIED AS SSAC WVM-011M, FROM EACH INCOMING 600V FEEDER. REMOVE ASSOCIATED WIRING UP TO FUSES.
 - 2 ADD AC VOLTMETER, VOLTAGE TRANSFORMER, CONTROL FUSES AND VOLTAGE SELECTOR SWITCH.

NOTES:

1. DRAWING BASED ON J.R. STEPHENSON MFG. LTD. SHOP DRAWING NUMBER C1762 REV A.



NO.	REVISIONS	DATE	DESIGN	CHECK
00	ISSUED FOR TENDER, BID OPP. 837-2009	2009/12/07	NB	CJR

		DESIGNED BY: EXISTING/N.BRADDOO DRAWN BY: S. JUGANAS SCALE: NTS DATE: 2009/12/07 CONSULTANT NO.: 112577-0105-47DD-0504	CHECKED BY: C. REIMER APPROVED BY: C. REIMER RELEASED FOR CONSTRUCTION BY: J. VEILLEUX DATE: 2009/12/02
--	--	---	--

ENGINEER'S SEAL

ORIGINAL DRAWING SEALED BY:
N. BRADDOO
SNC-LAVALIN
2009/12/07
REV. 00

CLOUDED CHANGES ONLY

THE CITY OF WINNIPEG
WATER AND WASTE DEPARTMENT

SOUTH END WATER POLLUTION CONTROL CENTRE
ELECTRICAL INSPECTION & UPGRADES
ELECTRICAL THREE LINE DIAGRAM
FACILITY MAIN BREAKERS

CITY DRAWING NUMBER: 1-0102S-E0015

SHEET	REV.	SIZE
001	00	A1