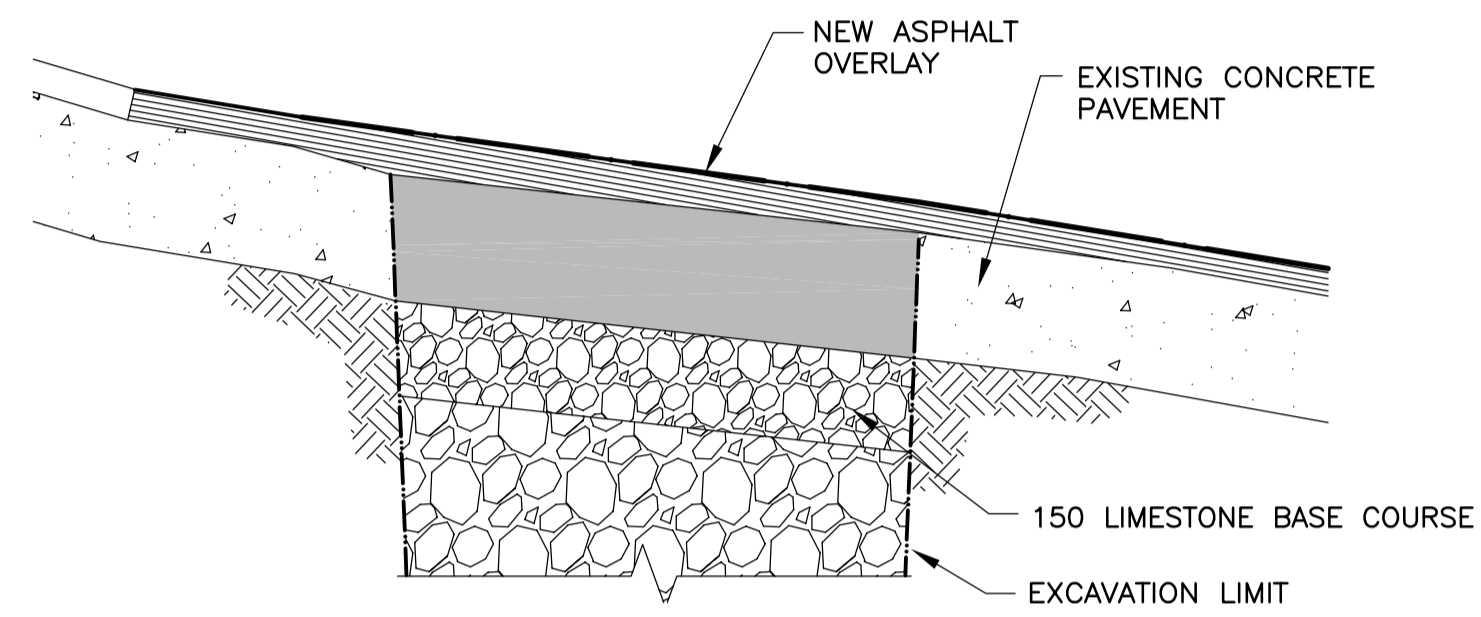
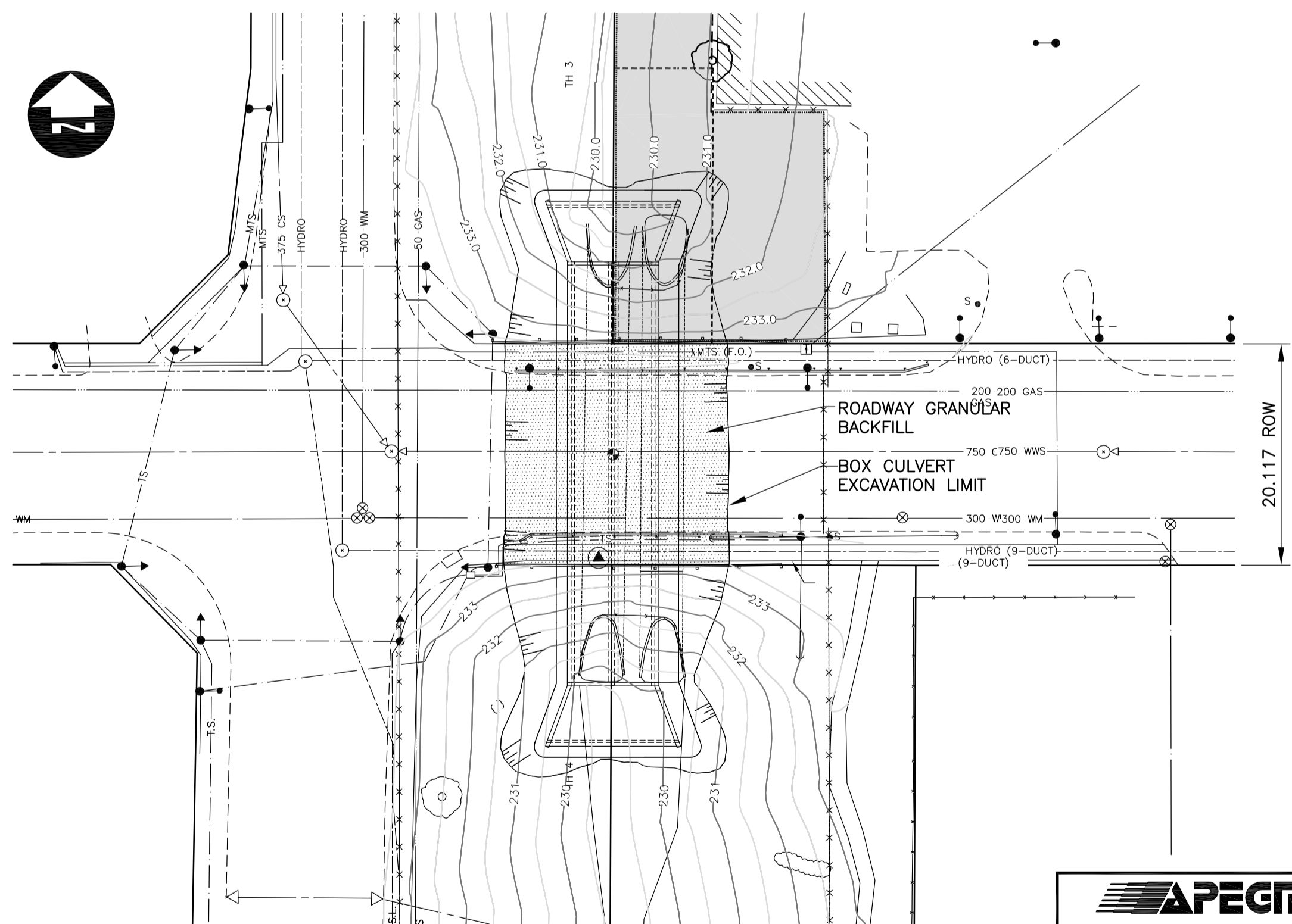
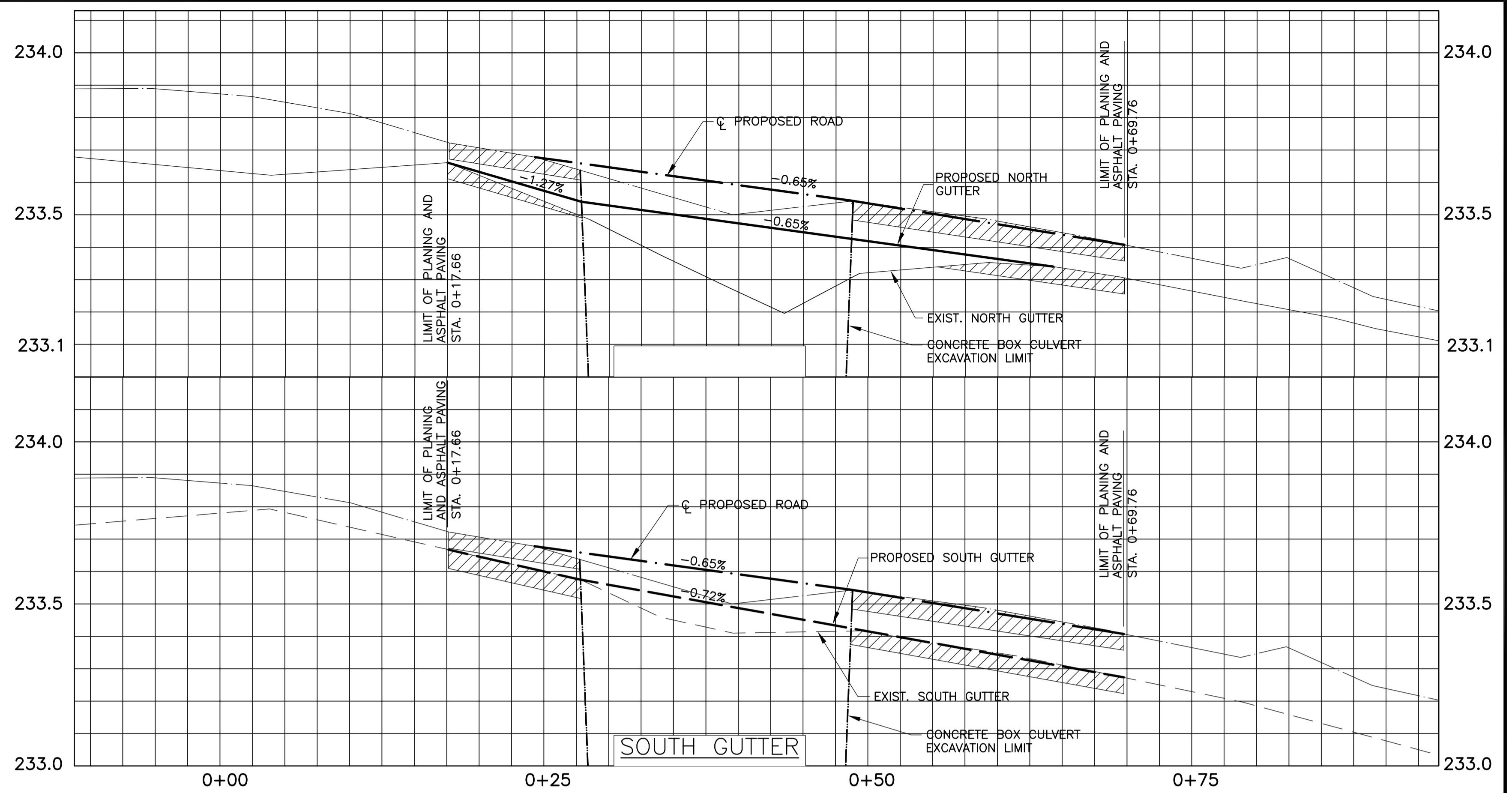


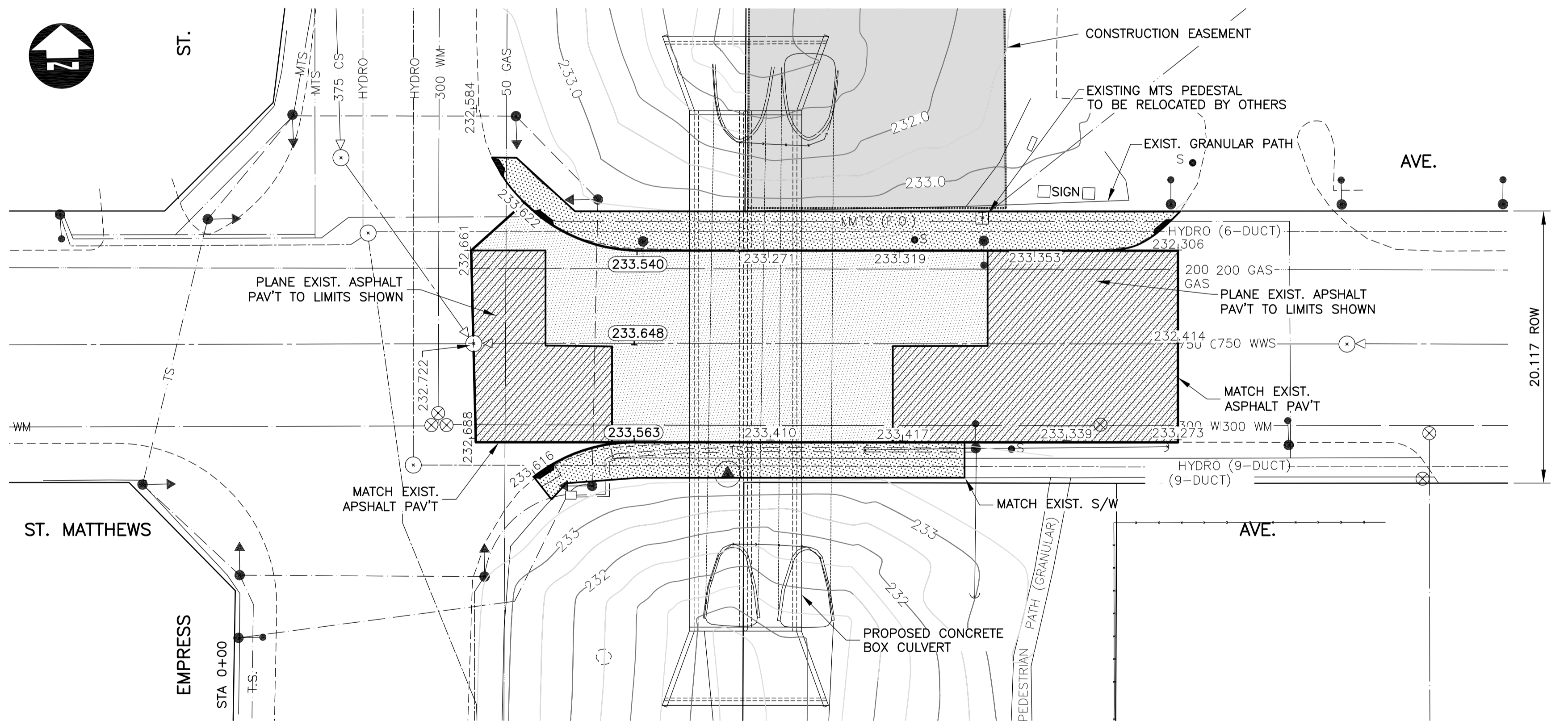
STAGE 1 - ROADWAY CONSTRUCTION
N.T.S.



STAGE 2 - ROADWAY RESTORATION DETAIL
N.T.S.



PLAN - STAGE 1 RESTORATION
N.T.S.



PLAN - STAGE 2 RESTORATION
SCALE: HOR. 1:250 VER. 1:10

METRIC
WHOLE NUMBERS INDICATE MILLIMETRES
DECIMALIZED NUMBERS INDICATE METRES

APEGM
Certificate of Authorization
Dillon Consulting Limited (MB)
No. 1789 Date: 2009.11.05

150 mm W.M.	WATERMAIN	150 mm W.M.	HYDRO	150 mm W.M.	WATERMAIN	150 mm W.M.
300 mm L.O.S.	HYDRANT VALVE	300 mm L.O.S.	M.T.S.	300 mm L.O.S.	HYDRANT VALVE	300 mm L.O.S.
250 mm W.W.S.	LAND DRAINAGE SEWER	250 mm W.W.S.	CONCRETE	250 mm W.W.S.	WASTE WATER SEWER	250 mm W.W.S.
	WASTE WATER SEWER		ASPHALT		LAND DRAINAGE SEWER	
	MANHOLE		PLANNING		WASTE WATER SEWER	
	CATCH BASIN		SIDEWALK		LAND DRAINAGE SEWER	
	CURB INLET		PAVING STONES		WASTE WATER SEWER	
	JUNCTIONS		PARTIAL DEPTH REPAIR		LAND DRAINAGE SEWER	
	CULVERT		PROPERTY LINE		WASTE WATER SEWER	
	GAS		SURVEY BAR		LAND DRAINAGE SEWER	
EXISTING	LEGEND-PLAN	PROPOSED	PARAPLEGIC RAMP	EXISTING	LEGEND-PROFILE	PROPOSED

UNDERGROUND STRUCTURES	
SUPY. U/G STRUCTURES COMMITTEE	DATE
NOTE: LOCATION OF UNDERGROUND STRUCTURES AS SHOWN ARE BASED ON THE BEST INFORMATION AVAILABLE. BUT NO GUARANTEE IS GIVEN THAT ALL EXISTING UTILITIES ARE SHOWN OR THAT THE GIVEN LOCATIONS ARE EXACT. CONFIRMATION OF EXISTENCE AND EXACT LOCATION OF ALL SERVICES MUST BE OBTAINED FROM THE INDIVIDUAL UTILITIES BEFORE PROCEEDING WITH CONSTRUCTION.	

B.M. ELEV.	37-023 1320 Ellice Ave. N.W. Corner Bldg Fndtn.	233.965 m
0	ISSUE FOR TENDER	2009.11.05 B.W.B.
NO.	REVISIONS	DATE BY

DESIGNED BY	SKB
DRAWN BY	SKB
CHECKED BY	B.W.B.
APPROVED BY	ORIGINAL SIGNED BY: B.W.B.
HOR. SCALE	AS SHOWN
VERTICAL	AS SHOWN
DATE	2009.11.02

DILLON CONSULTING

RELEASED FOR ORIGINAL CONSTRUCTION SIGNED BY:
M.B. CHISLETT
DATE: 2009.11.23

ENGINEER'S SEAL	ORIGINAL SIGNED BY: B.W. BIGLOW 2009.11.03
CONSULTANT PROJECT NO.	088683

THE CITY OF WINNIPEG
PUBLIC WORKS DEPARTMENT

OMAND'S CREEK CULVERT THROUGH ST. MATTHEWS AVENUE

ROADWAY RESTORATION PLAN AND PROFILE

CITY DRAWING NUMBER: C331-09-13
SHEET 13 OF 13

BID OPPORTUNITY NUMBER: 801-2009