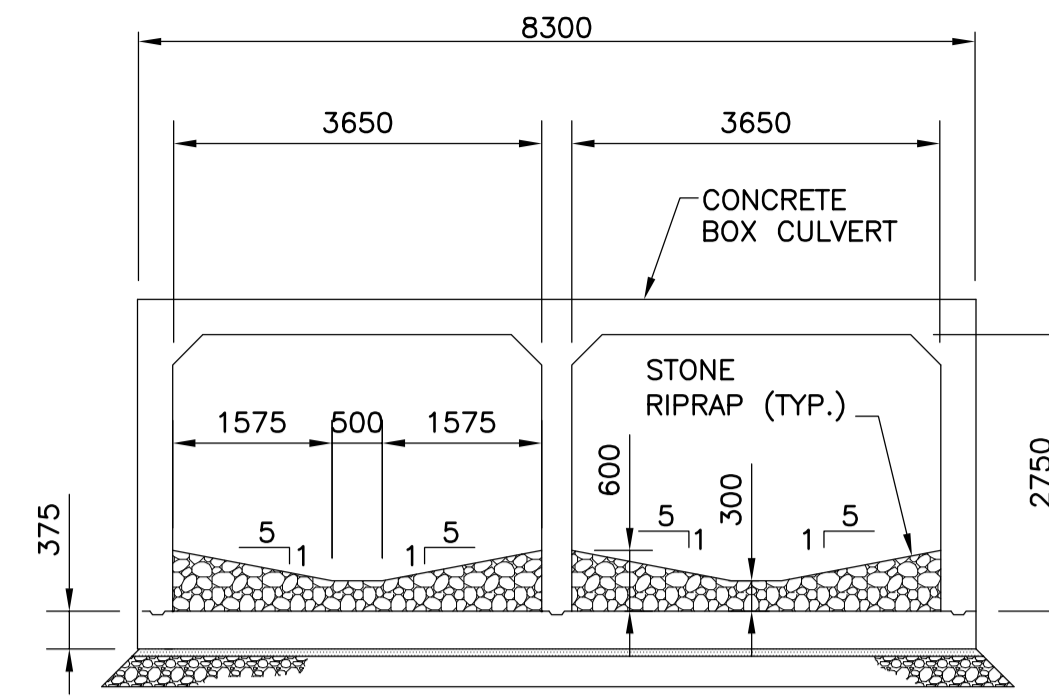
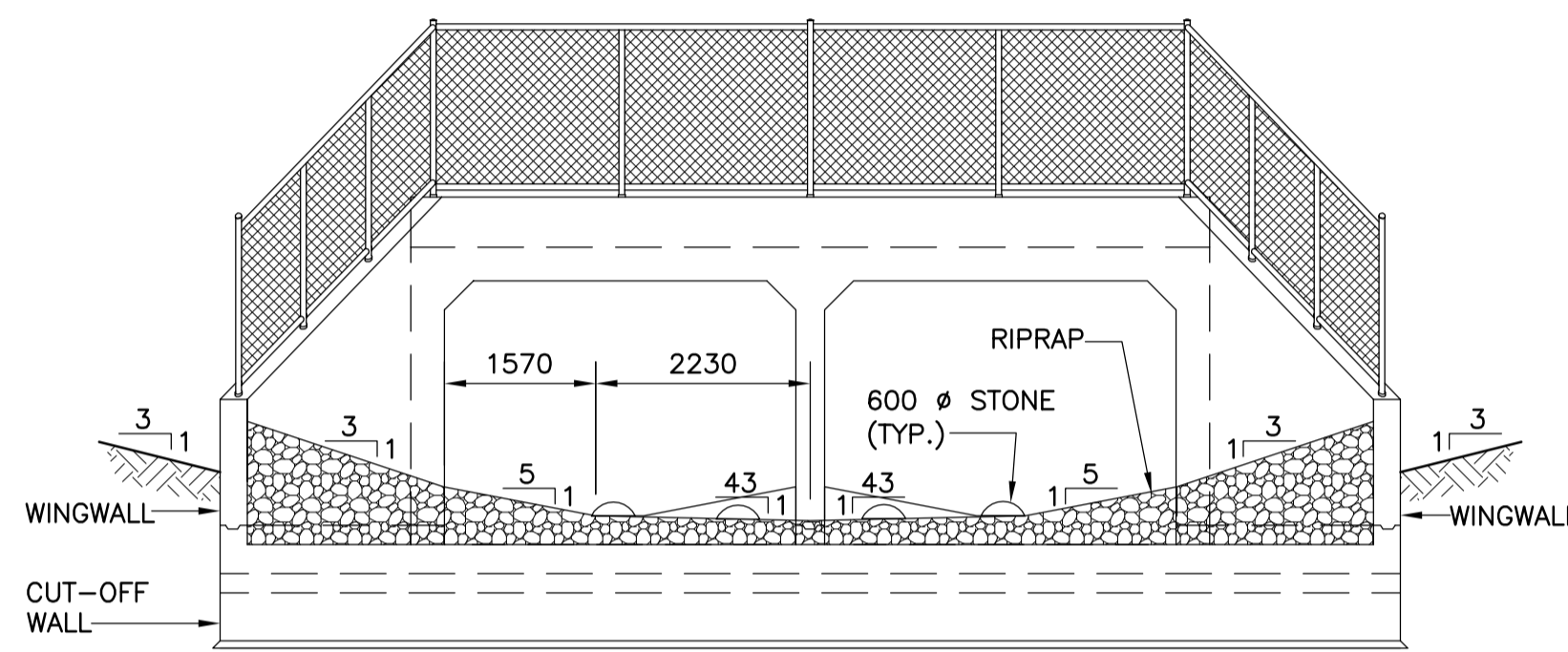


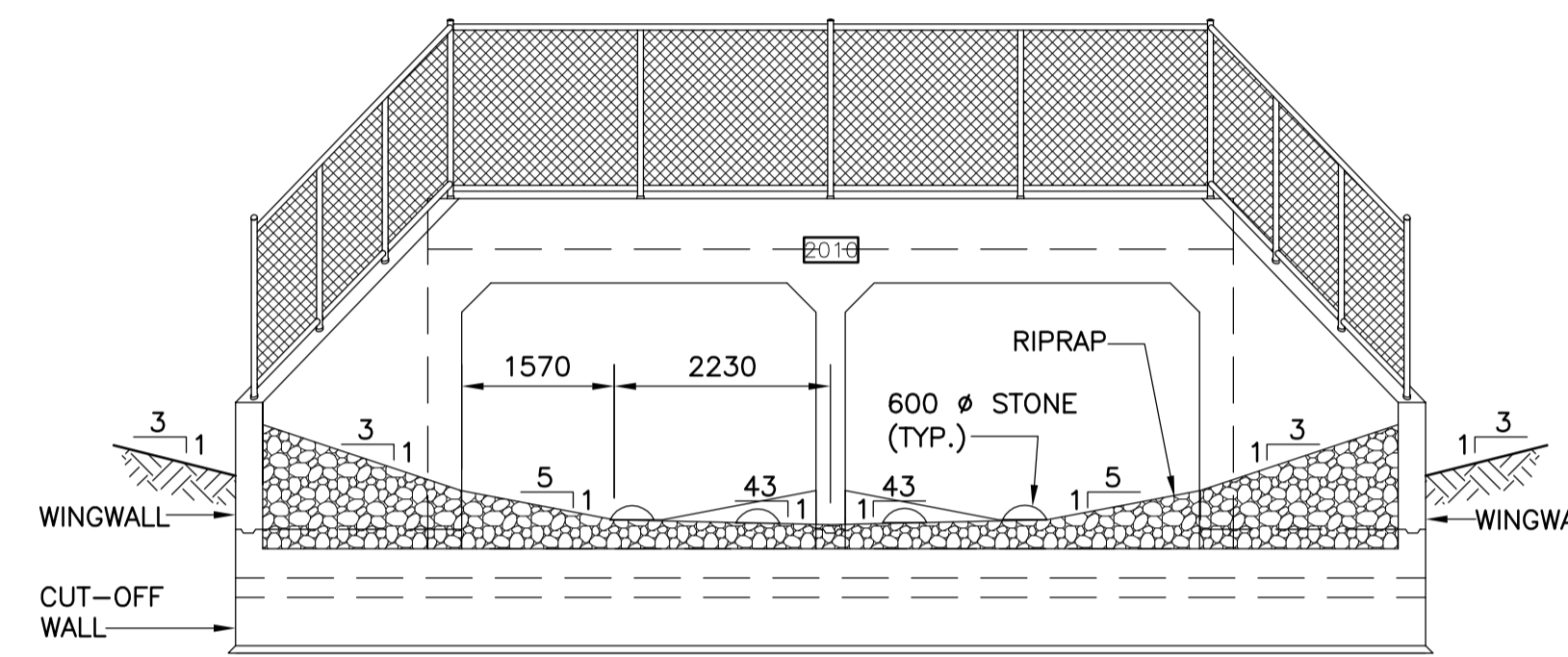
SECTION A
SCALE 1:75



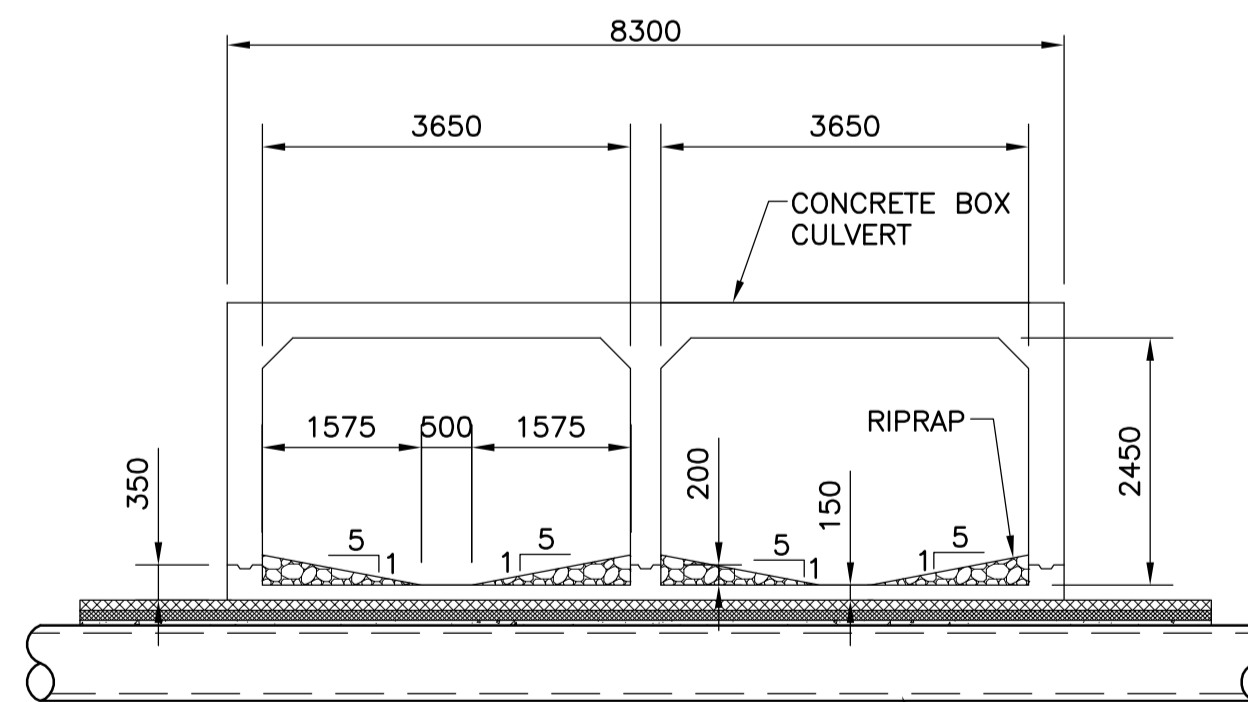
SECTION D
SCALE 1:75



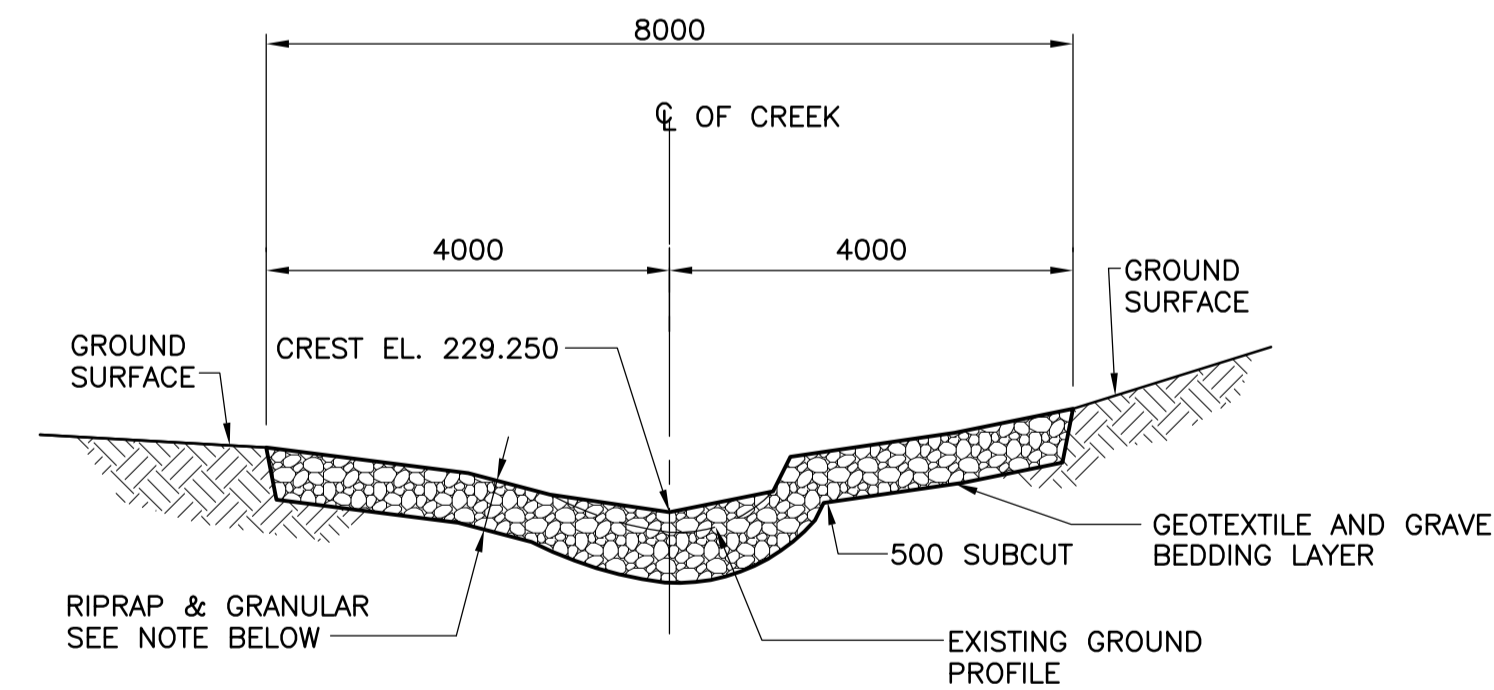
SECTION B
SCALE 1:75



SECTION E
SCALE 1:75



SECTION C
SCALE 1:75



SECTION F
SCALE 1:75

NOTE:

RIFFLE TO BE CONSTRUCTED FROM WELL-GRADED, ROUNDED, CLEAN ROCK AND GRANULAR UTILIZING 600 mm DIAMETER BOULDERS, STONE RIPRAP AND PIT-RUN GRAVEL. THE 600 mm BOULDERS TO BE USED TO DEFINE RIFFLE CREST, WHILE THE STONE RIPRAP WILL BE USED TO DEFINE THE UPSTREAM & DOWNSTREAM APRONS OF THE RIFFLE. THE PIT-RUN GRAVEL WILL BE USED TO FILL THE INTERSTITIAL SPACE WITHIN THE RIFFLE. ROCK, STONE RIPRAP TO BE SUPPLIED AND INSTALLED IN ACCORDANCE WITH CW3613.

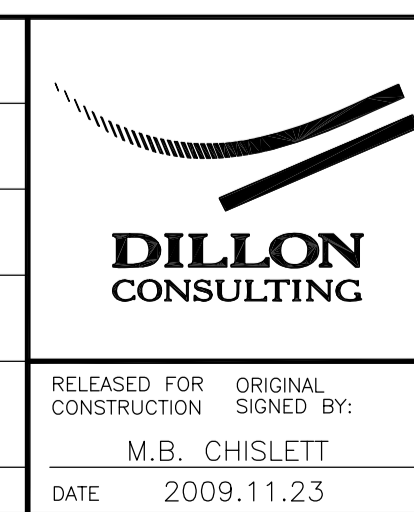
METRIC
WHOLE NUMBERS INDICATE MILLIMETRES
DECIMALIZED NUMBERS INDICATE METRES

G:\CAD\088683\Contract\Tender\Drawings\Revisions\088683_5103P.dwg



B.M. ELEV.	37-023	1320 Ellice Ave. N.W. Corner Bldg Fndtn.	DESIGNED BY	BWB
	233.965 m		DRAWN BY	RCB
			CHECKED BY	BWB
			APPROVED BY	ORIGINAL SIGNED BY: BWB
			HOR. SCALE	AS SHOWN
			VERTICAL SCALE	AS SHOWN
0	ISSUED FOR TENDER	2009.11.05	DATE	2009.11.02
NO.	REVISIONS	DATE	BY	DATE

RELEASER FOR ORIGINAL CONSTRUCTION SIGNED BY:	M.B. CHISLETT
DATE	2009.11.23



ENGINEER'S SEAL	ORIGINAL SIGNED BY	B.W. BIGLOW	DATE	2009.11.05
	CONSULTANT PROJECT NO.	088683		

OMAND'S CREEK CULVERT THROUGH ST. MATTHEWS AVENUE	
CITY DRAWING NUMBER	C331-09-04
SHEET	4 OF 13
BID OPPORTUNITY NUMBER	801-2009
GENERAL ARRANGEMENT SECTIONS	