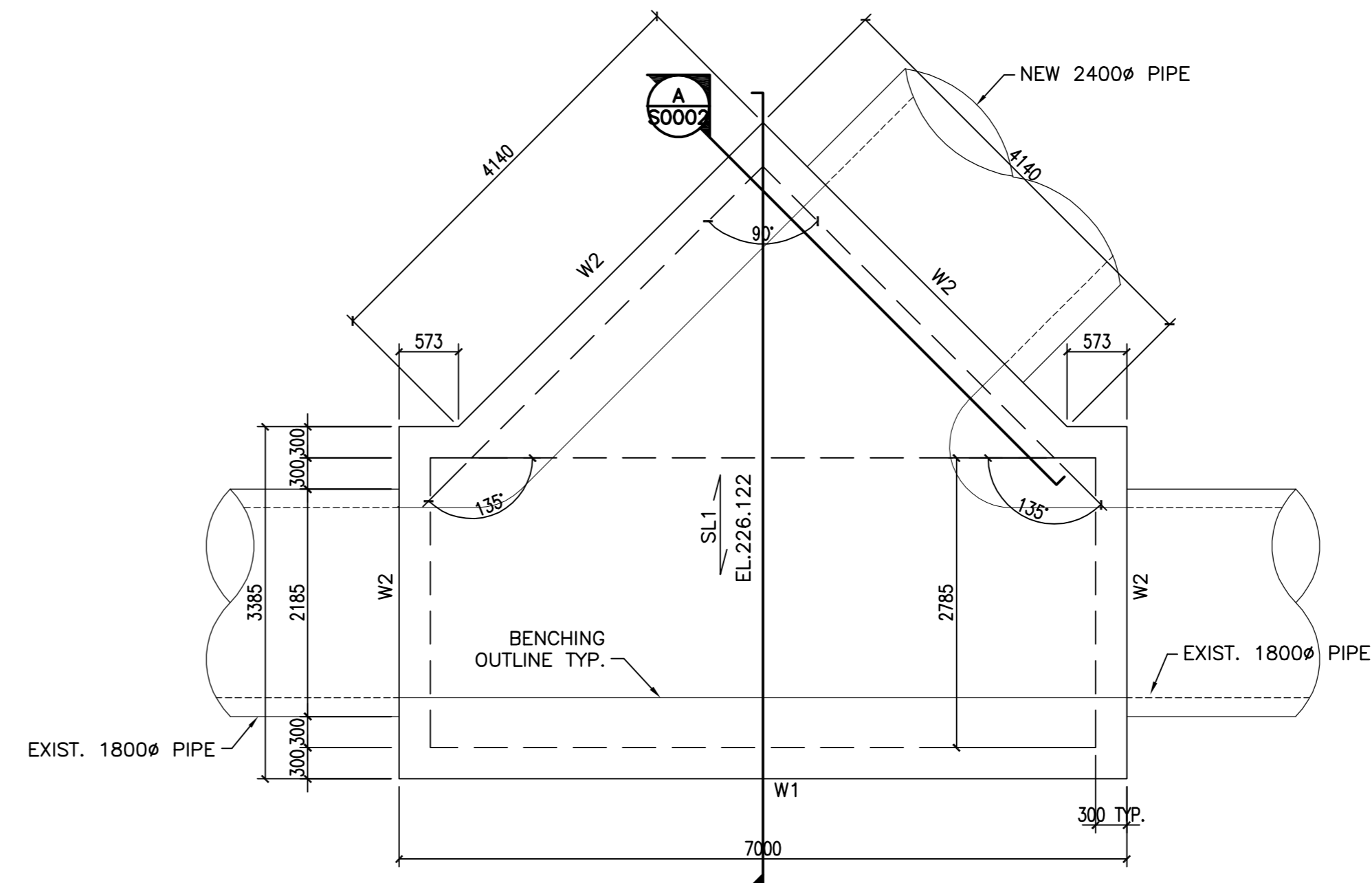


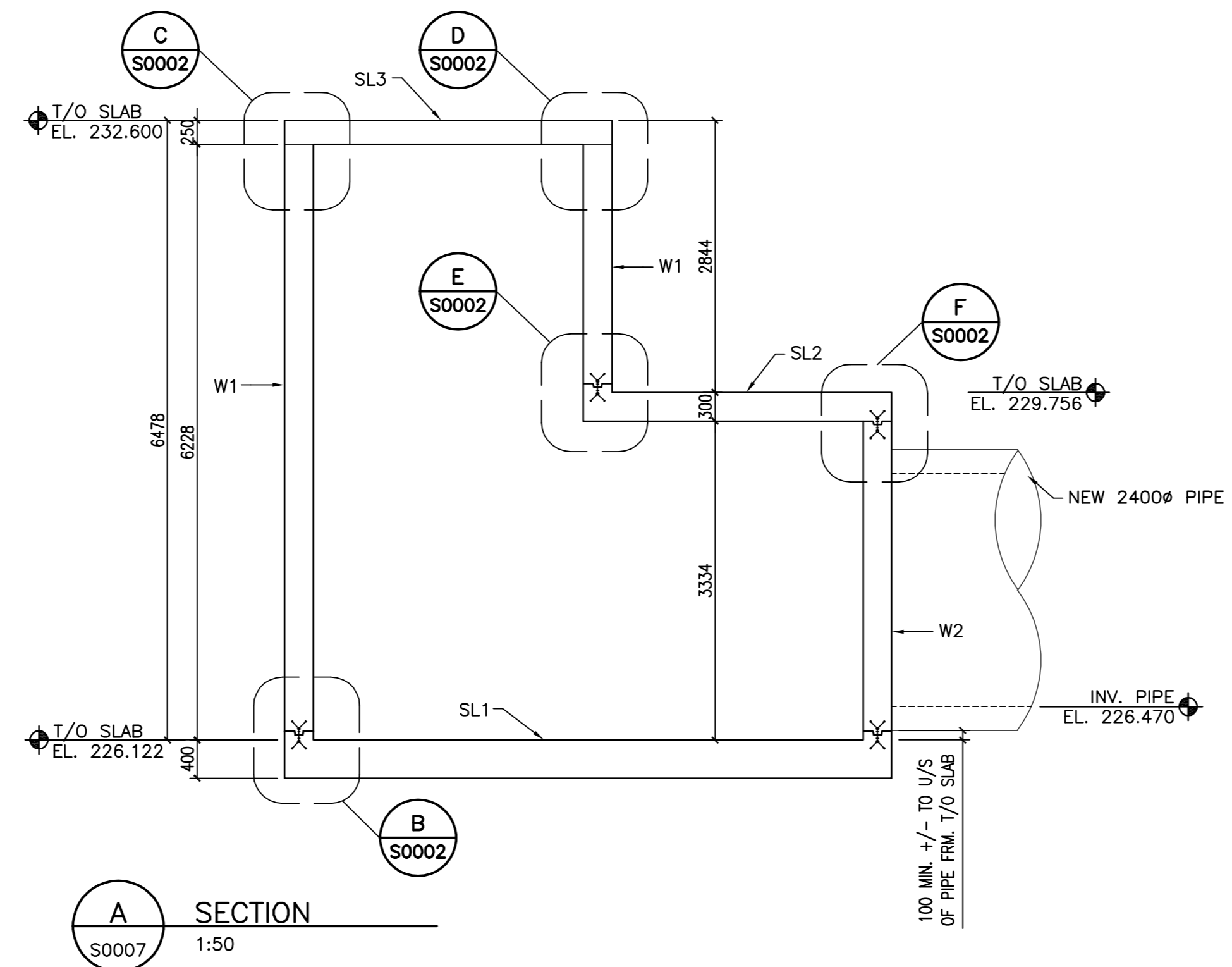
1 TOP SLAB CHAMBER #5
S0007 1:50

DESIGN LOADS:
LIVE = 4.8 kPa



2 BOTTOM SLAB CHAMBER #5
S0007 1:50

DRAWING NOTES:
1. SEE CITY DRAWING NUMBER 1-0102A-S0001-001 FOR GENERAL NOTES.
2. SEE CITY DRAWING NUMBER 1-0102A-S0001-001 FOR WALL, SLAB AND BEAM SCHEDULE.
3. SEE CITY DRAWING NUMBER 1-0102A-S0002-001 FOR CONCRETE SECTIONS & TYPICAL DETAILS.



A SECTION
S0007 1:50

83R066 - N. side Probasar Rd., 0.25km W. of St. Mary's Rd.,
Tilt: on top of 0.05m dia. x 1.2m iron pipe (near conc. gate chamber), 7.1m Nby. of N. side & 9.8m Wby. of W. side of conc. gate chamber 0.25km W. of St. Mary's Rd.

U:\1120865\084_Drawing\Sheet_Plan\03_Structural\08498_rml_s105.dwg
2009-10-13 11:01AM By: mofleming

METRIC
WHOLE NUMBERS INDICATE MILLIMETRES
DECIMALIZED NUMBERS INDICATE METRES

APECM
Certificate of Authorization
Stantec Consulting Ltd.
No. 1301 Expiry: April 30, 2010

LOCATION APPROVED UNDERGROUND STRUCTURES

B.M. 81-007
ELEV. 230.438

SUPV. U/G STRUCTURES COMMITTEE DATE
NOTE:
LOCATION OF UNDERGROUND STRUCTURES AS SHOWN ARE BASED ON THE BEST INFORMATION AVAILABLE BUT NO GUARANTEE IS GIVEN THAT ALL EXISTING UTILITIES ARE SHOWN OR THAT THE GIVEN LOCATIONS ARE EXACT. CONFIRMATION OF EXISTENCE AND EXACT LOCATION OF ALL SERVICES MUST BE OBTAINED FROM THE INDIVIDUAL UTILITIES BEFORE PROCEEDING WITH CONSTRUCTION.

NO.	REVISIONS	DATE	BY
A	ISSUED FOR TENDER	09.10.13	

Stantec Consulting Ltd.
905 Waverley Street, Winnipeg, Manitoba
Tel 204-489-5900 Fax 204-453-9012

DESIGNED BY	M.H.	CHECKED BY	T.D.
DRAWN BY	M.F.	APPROVED BY	C.M.
HOR. SCALE:	AS NOTED	RELEASED FOR CONSTRUCTION:	
DATE	09.09.21	DATE	

ENGINEER'S SEAL

ORIGINALLY SEALED BY:
MOHAMMAD HOQUE
OCT. 13, 2009
BID OPPORTUNITY NO. 709-2009

THE CITY OF WINNIPEG
WATER AND WASTE DEPARTMENT

Winnipeg
SOUTH END WATER POLLUTION CONTROL CENTRE
INSTALLATION OF OUTFALL PIPE
EFFLUENT SAMPLING FACILITY AND ASSOCIATED WORKS
CHAMBER NO.5
PLAN & SECTION
CITY DRAWING NUMBER 1-0102A-S0007-001
SHEET 1 OF 1