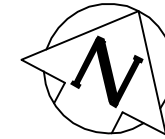
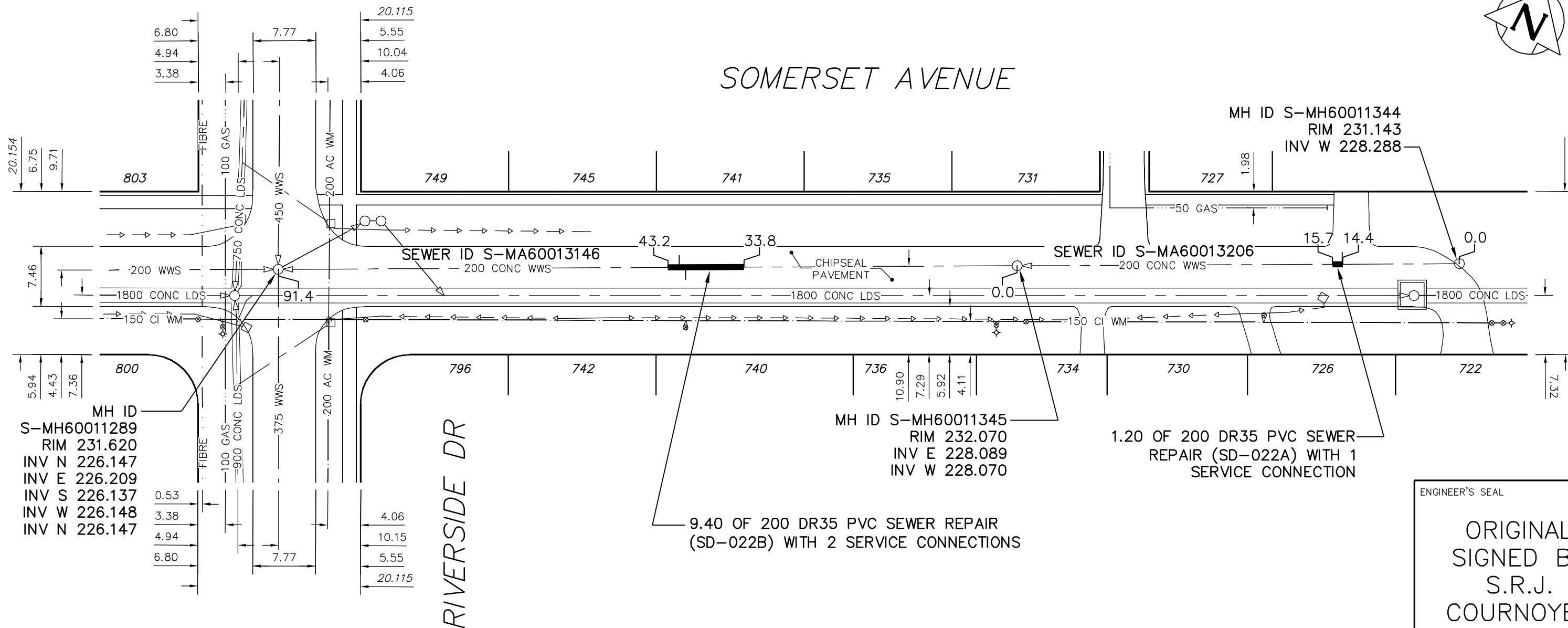


NOTES:

1. BACKFILL UNDER PAVEMENT, IN SIDEWALKS, & WITHIN 1.0 m OF PAVEMENT TO BE CLASS 3.
2. CONFIRM LIMITS OF REPAIR IN PRESENCE OF THE CONTRACT ADMINISTRATOR BY CCTV.



SEWER JUNCTION INFORMATION FROM SEWER VIDEO INSPECTION SEWER ID S-MA60013146				
DISTANCE FROM MH ID S-MH60011345				
41.0	W	150ø	SOUTH	JX
41.8	W	150ø	NORTH	JX

SEWER JUNCTION INFORMATION FROM SEWER VIDEO INSPECTION SEWER ID S-MA60013206				
DISTANCE FROM MH ID S-MH60011344				
14.5	W	150ø	NORTH	CNI

ENGINEER'S SEAL

ORIGINAL
SIGNED BY
S.R.J.
COURNOYER
09/10/22

BID OPPORTUNITY: 703-2009
FILENAME : 9077.dwg
PLOT DATE : 2009 10 26

LEGEND:

52.0 | MEASUREMENT TO REPAIR FROM REFERENCE MH SHOWN THUS...

METRIC

WHOLE NUMBERS INDICATE MILLIMETRES
DECIMALIZED NUMBERS INDICATE METRES

B.M. ELEV.	FIELD BOOK #:	CITY OF WINNIPEG WATER AND WASTE ENGINEERING DIVISION		THE CITY OF WINNIPEG WATER AND WASTE DEPARTMENT	
POSTED TO LIS		DESIGNED BY: AMC	CHECKED BY: SC	2009 SEWER RENEWALS AND REPAIRS CONTRACT 24	
		DRAWN BY: CJH	APPROVED BY: KZ	SOMERSET AVENUE	
		HOR. SCALE: 1:500	RELEASED FOR CONSTRUCTION	2ND MH E OF RIVERSIDE DRIVE TO MH AT RIVERSIDE DRIVE	
		VERTICAL		SHEET 9 OF 18	
NO.	REVISIONS	DATE	BY	DATE	CITY DRAWING NUMBER
		2009 10 20			9077