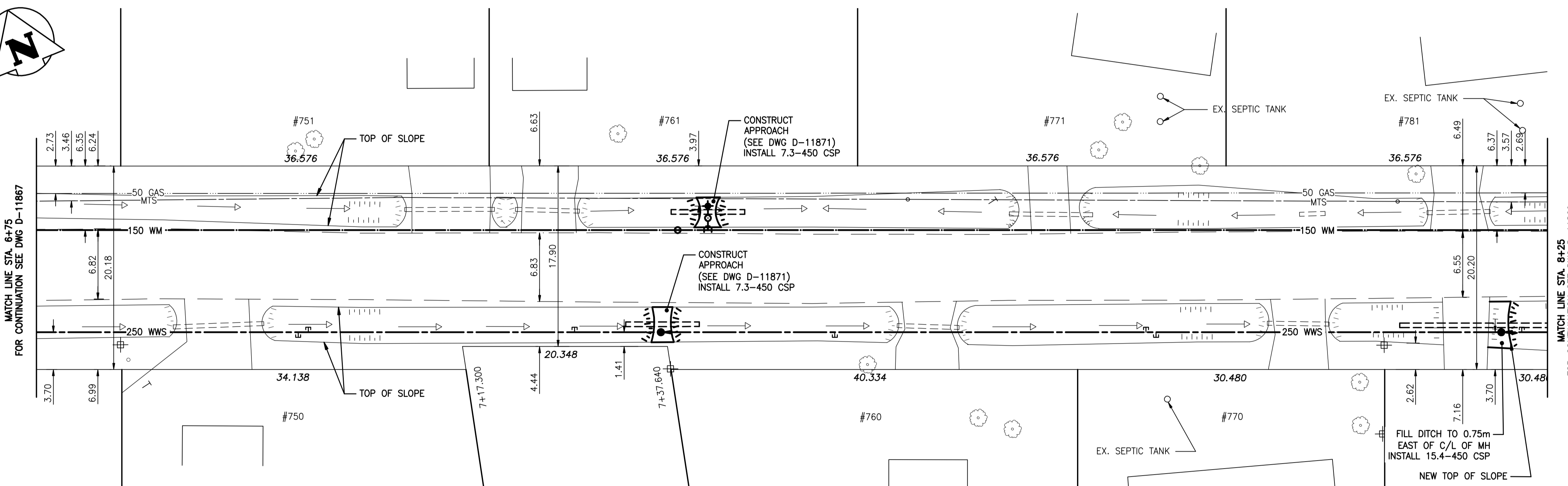
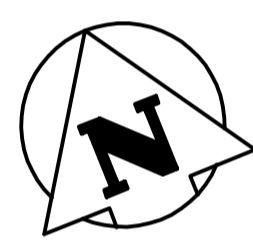


KNOWLES AVENUE



WARNING

IF POWER EQUIPMENT OR EXPLOSIVES ARE TO BE USED FOR EXCAVATION ON THIS PROJECT THE CONTRACTOR MUST:
 1) NOTIFY THE GAS COMPANY OF THE PROPOSED LOCATION OF EXCAVATION.
 2) TAKE PRECAUTION TO AVOID DAMAGE TO GAS COMPANY INSTALLATIONS.
 SEE PROVINCIAL REGULATION 140/92 FOR DETAILS

METRIC

WHOLE NUMBERS INDICATE MILLIMETRES
 DECIMALIZED NUMBERS INDICATE METRES

BENCH MARK: 86R347 - N.E. Knowles Ave. & Gateway Rd. Tblt. on top of 0.05m dia. x 2.4 ron pipe, 8m S. of S. wall No.451 Knowles Ave. & 33.4m E. of most Ely. rail of railway tracks on C.P.R. Loc Du Bonnet Subd. R.O.W. or 1.1m W. of E.L. Gateway Rd. & 0.9m S. of N.L. of Knowles. Ave.

NOTE:
 STATIONING IS ALONG S. P/L OF KNOWLES AVE.
 BID OPPORTUNITY 678-2009



EXISTING	LEGEND-PLAN	PROPOSED	EXISTING	LEGEND-PLAN	PROPOSED	EXISTING	LEGEND-PROFILE	PROPOSED
150 WM	WATERMAIN	150 WM	HYDRO	HYDRO	150 WM	WATERMAIN	150 WM	WATERMAIN
300 LDS	LAND DRAINAGE SEWER	300 LDS	M.T.S.	M.T.S.	300 LDS	LAND DRAINAGE SEWER	300 LDS	LAND DRAINAGE SEWER
250 WWS	WASTE WATER SEWER	250 WWS	CONCRETE	CONCRETE	250 WWS	WASTE WATER SEWER	250 WWS	WASTE WATER SEWER
MANHOLE	MANHOLE	MANHOLE	ASPHALT	ASPHALT	MANHOLE	MANHOLE	MANHOLE	MANHOLE
CATCH BASIN	CATCH BASIN	CATCH BASIN	SIDEWALK	SIDEWALK	CATCH BASIN	CATCH BASIN	CATCH BASIN	CATCH BASIN
CULVERT	CULVERT	CULVERT	PROPERTY LINE	PROPERTY LINE	CULVERT	CULVERT	CULVERT	CULVERT
JUNCTIONS	JUNCTIONS	JUNCTIONS	SURVEY BAR	SURVEY BAR	JUNCTIONS	JUNCTIONS	JUNCTIONS	JUNCTIONS
GAS	GAS	GAS	DITCH	DITCH	GAS	GAS	GAS	GAS
			ELEVATION	ELEVATION				
			DITCH ELEVATION	DITCH ELEVATION				
			DITCH SLOPE	DITCH SLOPE				

LOCATION APPROVED UNDERGROUND STRUCTURES
 SUPV. U/G STRUCTURES COMMITTEE DATE
 NOTE:
 LOCATION OF UNDERGROUND STRUCTURES AS SHOWN ARE BASED ON THE BEST INFORMATION AVAILABLE BUT NO GUARANTEE IS GIVEN THAT ALL EXISTING UTILITIES ARE SHOWN OR THAT THE GIVEN LOCATIONS ARE EXACT. CONFIRMATION OF EXISTENCE AND EXACT LOCATION OF ALL SERVICES MUST BE OBTAINED FROM THE INDIVIDUAL UTILITIES BEFORE PROCEEDING WITH CONSTRUCTION.

NO.	REVISIONS	DATE	BY

Stantec Consulting Ltd.
 905 Waverley Street, Winnipeg, Manitoba
 Tel 204-489-5900 Fax 204-453-9012

DESIGNED BY: J.K.H. CHECKED BY: H.A.K.
 DRAWN BY: B.K.W. APPROVED BY: H.A.K.

HOR. SCALE: 1:250
 VERTICAL: 1:50

RELEASED FOR CONSTRUCTION: DATE

DATE: 09.08.07

ENGINEER'S SEAL
 CONSULTANT DRAWING NO. C-205

THE CITY OF WINNIPEG
 WATER AND WASTE DEPARTMENT
 ENGINEERING DIVISION

KNOWLES AVENUE LOCAL IMPROVEMENT
 RALEIGH STREET TO DE VRIES AVENUE
 98.8m E OF EL OF SUNNY MORNING RD.
 TO 83.0m W OF WL OF CINDY KLASSEN WAY
 WATERMAIN, LAND DRAINAGE AND WASTEWATER SEWER

SHEET 5 OF 8
 CAD FILE DRAWING NUMBER I1730c-201-712.dwg
 CITY DRAWING NUMBER D-I1868

V:\1120\proj\1120171201\Drawings\1120171201.dwg
 2010-09-15 09:50AM Bk Johns