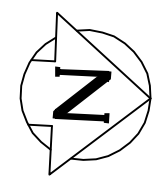
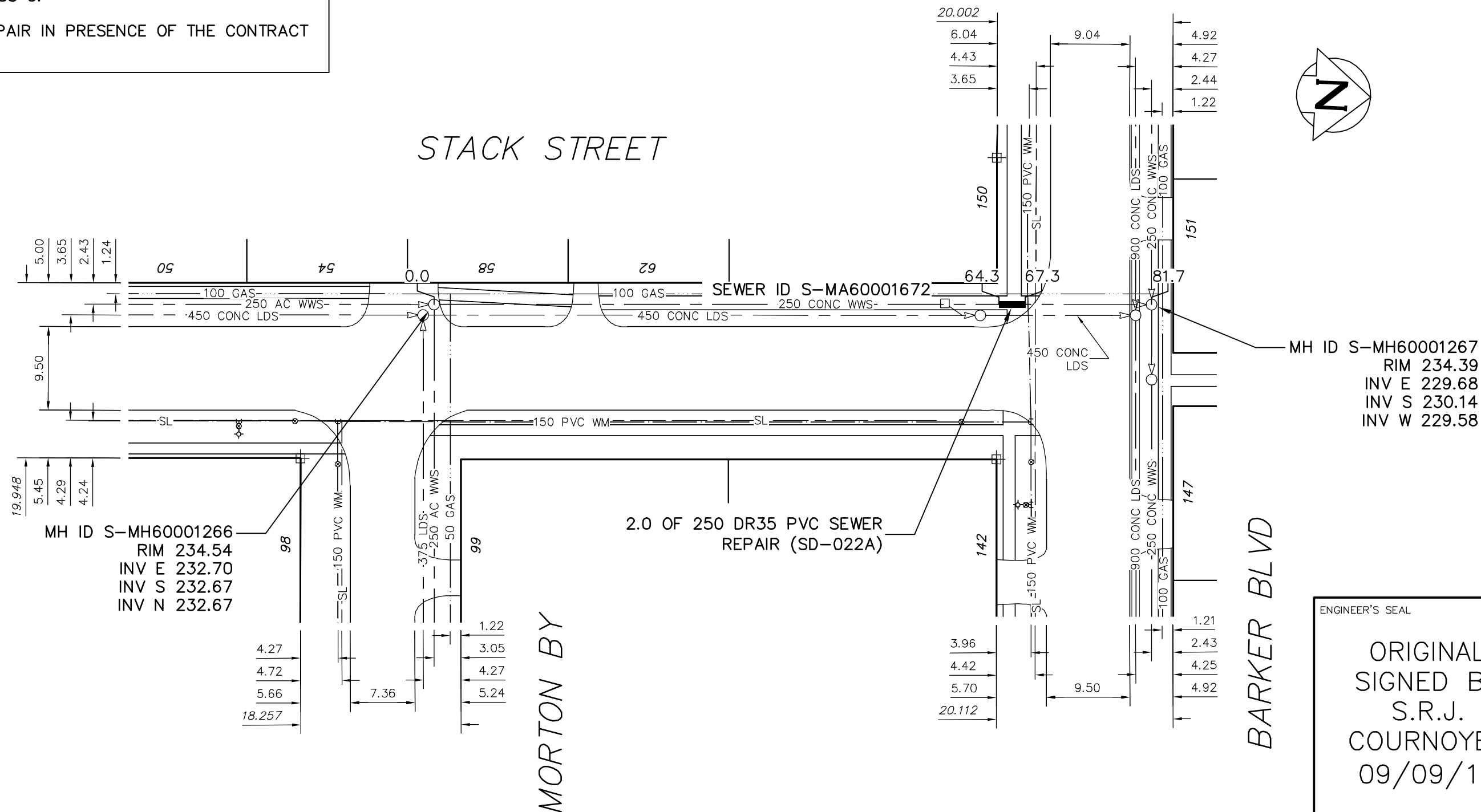


**NOTES:**

1. BACKFILL UNDER PAVEMENT, IN SIDEWALKS, & WITHIN 1.0 m OF PAVEMENT TO BE CLASS 3.
2. CONFIRM LIMITS OF REPAIR IN PRESENCE OF THE CONTRACT ADMINISTRATOR BY CCTV.



SEWER JUNCTION INFORMATION FROM SEWER VIDEO INSPECTION SEWER ID S-MA60001672
DISTANCE FROM MH ID S-MH60001266
NO JUNCTIONS WITHIN REPAIR

ENGINEER'S SEAL

**ORIGINAL  
SIGNED BY  
S.R.J.  
COURNOYER  
09/09/16**

BID OPPORTUNITY: 669-2009  
FILENAME : 9013.dwg  
PLOT DATE : 2009 09 17

**LEGEND:**

52.0 | MEASUREMENT TO REPAIR FROM REFERENCE MH SHOWN THUS...

**METRIC**  
WHOLE NUMBERS INDICATE MILLIMETRES  
DECIMALIZED NUMBERS INDICATE METRES

B.M. ELEV.	FIELD BOOK #:	<b>CITY OF WINNIPEG WATER AND WASTE ENGINEERING DIVISION</b>		<b>THE CITY OF WINNIPEG WATER AND WASTE DEPARTMENT</b>	
POSTED TO LBIS		DESIGNED BY: AMC	CHECKED BY: SC	<b>2009 SEWER REPAIRS CONTRACT 45 STACK STREET MH AT MORTON BAY TO MH AT BARKER BOULEVARD</b>	
		DRAWN BY: C.J.H.	APPROVED BY: K.Z.		
		HOR. SCALE: 1:500	RELEASED FOR CONSTRUCTION	<b>SHEET 16 OF 23</b> CITY DRAWING NUMBER <b>9013</b>	
		VERTICAL			
NO.	REVISIONS	DATE	BY	DATE	2009 09 17