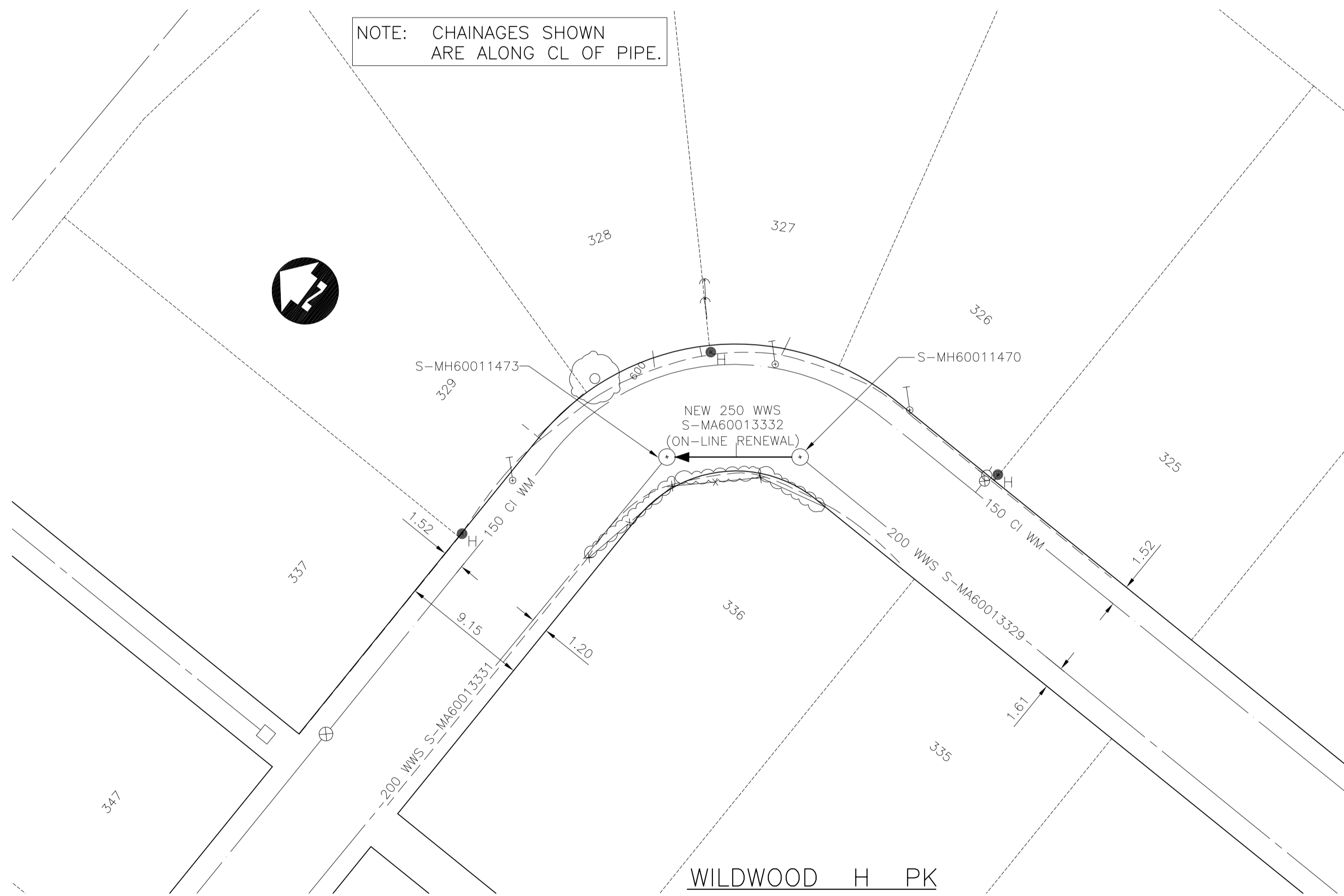


**CONSTRUCTION NOTES:**

- CONTRACTOR SHALL TAKE PRECAUTIONARY STEPS TO AVOID DAMAGE FROM CONSTRUCTION ACTIVITIES TO EXISTING BOULEVARDS AND TREES WITHIN THE LIMITS OF CONSTRUCTION.
- SEWER AND SEWER SERVICES TO BE INSTALLED BY TRENCHLESS METHODS UNLESS OTHERWISE SPECIFIED.
- LOCATION OF EXISTING UTILITIES TO BE CONFIRMED IN THE FIELD BY THE CONTRACTOR.
- LIMITS OF SIDEWALK RENEWALS TO BE FINALIZED IN THE FIELD BY THE CONTRACT ADMINISTRATOR.
- BOULEVARD REPLACEMENT TO BE FINALIZED IN THE FIELD BY THE CONTRACT ADMINISTRATOR.
- CONTRACTOR TO PLUG ANY ABANDONED PIPES THAT ARE BROKEN DURING CONSTRUCTION.
- TRENCHES & EXCAVATIONS WITHIN 1 METRE OF A PAVED AREA INCLUDING SIDEWALKS SHALL BE CLASS 3 BACKFILL.
- BACKFILL IN BOULEVARD TO BE CLASS 5.
- CB LEADS TO BE INSTALLED AT MIN. 1.0% SLOPE OR AS DIRECTED BY CONTRACT ADMINISTRATOR.
- CONTRACTOR TO CONFIRM THE NUMBER AND LOCATION OF SEWER SERVICES TO BE RECONNECTED.

NOTE: CHAINAGES SHOWN ARE ALONG CL OF PIPE.



EXISTING SEWER SERVICE LOCATION RECORDS		
ADDRESS	SIZE/TYPE	SERVICE LOCATION AT PL
WILDWOOD H PK	INFO NOT AVAILABLE	INFO NOT AVAILABLE

SEWER SERVICE INFORMATION (S-MA60013332) *	
DISTANCE FROM 1ST MH W OF WILDWOOD H PK (E LEG) (S-MH60017726)	5.0 S
SERVICE CONNECTION E	

\* - INFORMATION FROM SEWER VIDEO INSPECTION

**METRIC**

WHOLE NUMBERS INDICATE MILLIMETRES  
DECIMALIZED NUMBERS INDICATE METRES

150 mm W.M.	WATERMAIN	150 mm W.M.	HYDRO	150 mm W.M.	WATERMAIN	150 mm W.M.
	HYDRANT		M.T.S.		CONCRETE	
	LAND DRAINAGE SEWER		PROPERTY LINE		SURVEY BAR	
	WASTE WATER SEWER		TREE		LIGHT STANDARD	
	MANHOLE		CURB INLET		GUY ANCHOR	
	CATCH BASIN		JUNCTIONS			
	CULVERT		EXISTING		PROPOSED	
	GAS		LEGEND-PROFILE		PROPOSED	

**UNDERGROUND STRUCTURES**

SUPPLY U/S STRUCTURES COMMITTEE DATE

NOTE:  
LOCATION OF UNDERGROUND STRUCTURES AS SHOWN ARE BASED ON THE BEST INFORMATION AVAILABLE BUT NO GUARANTEE IS GIVEN THAT ALL EXISTING UTILITIES ARE SHOWN OR THAT THE GIVEN LOCATIONS ARE EXACT. CONFIRMATION OF EXISTENCE AND EXACT LOCATION OF ALL SERVICES MUST BE OBTAINED FROM THE INDIVIDUAL UTILITIES BEFORE PROCEEDING WITH CONSTRUCTION.

B.M. ELEV.	64-016 230.655
DESIGNED BY	C.L.P.
DRAWN BY	A.J.P./S.K.B.
CHECKED BY	S.C.C.
APPROVED BY	D.P.K.
HOR. SCALE	1 : 250
VERTICAL	1 : 50
ISSUED FOR TENDER	10.07.2009 S.C.C.
NO. REVISIONS	DATE BY



**DILLON CONSULTING**

ENGINEER'S SEAL  
PROVINCE OF MANITOBA  
D.P. KRAHN  
10/07/09  
Member  
4226  
REGISTERED PROFESSIONAL ENGINEER

**THE CITY OF WINNIPEG**  
WATER AND WASTE DEPARTMENT

2009 SEWER RENEWALS AND REPAIRS, CONTRACT 19  
WILDWOOD H PK. (N LEG)  
MH AT WILDWOOD H PK. (E LEG) TO  
1ST MH W OF WILDWOOD H PK. (E LEG)

CITY DRAWING NUMBER  
9092  
SHEET 07 OF 25  
BID OPPORTUNITY  
658-2009

CONSULTANT PROJECT NO.  
09-1893-2000

RELEASED FOR CONSTRUCTION  
DATE

**APEGM**  
Certificate of Authorization  
Dillon Consulting Limited (MB)  
No. 1789 Date: OCT. 7, 2009