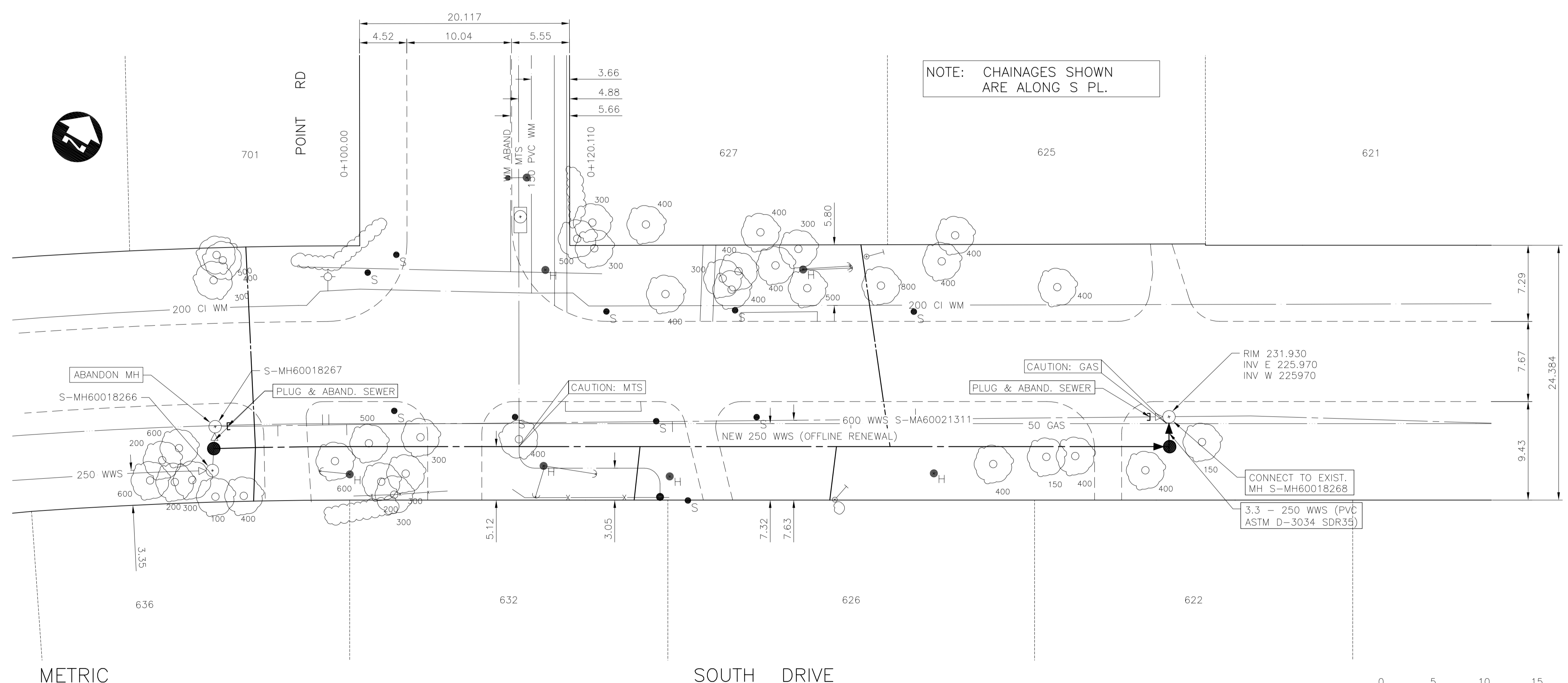


- CONSTRUCTION NOTES:**
- CONTRACTOR SHALL TAKE PRECAUTIONARY STEPS TO AVOID DAMAGE FROM CONSTRUCTION ACTIVITIES TO EXISTING BOULEVARDS AND TREES WITHIN THE LIMITS OF CONSTRUCTION.
 - SEWER AND SEWER SERVICES TO BE INSTALLED BY TRENCHLESS METHODS UNLESS OTHERWISE SPECIFIED.
 - LOCATION OF EXISTING UTILITIES TO BE CONFIRMED IN THE FIELD BY THE CONTRACTOR.
 - LIMITS OF SIDEWALK RENEWALS TO BE FINALIZED IN THE FIELD BY THE CONTRACT ADMINISTRATOR.
 - BOULEVARD REPLACEMENT TO BE FINALIZED IN THE FIELD BY THE CONTRACT ADMINISTRATOR.
 - CONTRACTOR TO PLUG ANY ABANDONED PIPES THAT ARE BROKEN DURING CONSTRUCTION.
 - TRENCHES & EXCAVATIONS WITHIN 1 METRE OF A PAVED AREA INCLUDING SIDEWALKS SHALL BE CLASS 3 BACKFILL.
 - BACKFILL IN BOULEVARD TO BE CLASS 5.
 - CB LEADS TO BE INSTALLED AT MIN. 1.0% SLOPE OR AS DIRECTED BY CONTRACT ADMINISTRATOR.
 - CONTRACTOR TO CONFIRM THE NUMBER AND LOCATION OF SEWER SERVICES TO BE RECONNECTED.



EXISTING SEWER SERVICE LOCATION RECORDS		
ADDRESS	SIZE/TYPE	SERVICE LOCATION AT PL
SOUTH DR	INFO NOT AVAILABLE	INFO NOT AVAILABLE

SEWER SERVICE INFORMATION (S-MA60021311) *		
DISTANCE FROM MH @ POINT RD (S-MH60018267)		
6.0 E	SERVICE CONNECTION S	
10.3 E	SERVICE CONNECTION N	
10.9 E	SERVICE CONNECTION N	
12.6 E	SERVICE CONNECTION S	
31.5 E	SERVICE CONNECTION N	
43.8 E	SERVICE CONNECTION S	
60.9 E	SERVICE CONNECTION S	
67.1 E	SERVICE CONNECTION N	

* - INFORMATION FROM SEWER VIDEO INSPECTION

APEGM
 Certificate of Authorization
 Dillon Consulting Limited (MB)
 No. 1789 Date: OCT. 7, 2009

METRIC
 WHOLE NUMBERS INDICATE MILLIMETRES
 DECIMALIZED NUMBERS INDICATE METRES

150 mm W.M.	WATERMAIN	150 mm W.M.	HYDRO	150 mm W.M.	WATERMAIN	150 mm W.M.	
	HYDRANT		M.T.S.		CONCRETE		ASPHALT
	LAND DRAINAGE SEWER		PROPERTY LINE		SURVEY BAR		SERVICE VALVE
	WASTE WATER SEWER		MANHOLE		CATCH BASIN		CURB INLET
	JUNCTIONS		CULVERT		GAS		LIGHT STANDARD
	EXISTING LEGEND-PLAN		PROPOSED LEGEND-PLAN		EXISTING LEGEND-PROFILE		PROPOSED LEGEND-PROFILE

UNDERGROUND STRUCTURES

SUPV. U/S STRUCTURES COMMITTEE DATE

NOTE:
 LOCATION OF UNDERGROUND STRUCTURES AS SHOWN ARE BASED ON THE BEST INFORMATION AVAILABLE BUT NO GUARANTEE IS GIVEN THAT ALL EXISTING UTILITIES ARE SHOWN OR THAT THE GIVEN LOCATIONS ARE EXACT. CONFIRMATION OF EXISTENCE AND EXACT LOCATION OF ALL SERVICES MUST BE OBTAINED FROM THE INDIVIDUAL UTILITIES BEFORE PROCEEDING WITH CONSTRUCTION.

B.M. ELEV.	64-016	230.655
DESIGNED BY	C.L.P.	
DRAWN BY	A.J.P./S.K.B.	
CHECKED BY	S.C.C.	
APPROVED BY	D.P.K.	
HOR. SCALE	1 : 250	
VERTICAL	1 : 50	
ISSUED FOR TENDER	10.07.2009	S.C.C.
NO. REVISIONS	DATE	BY

DILLON CONSULTING

DESIGNED BY C.L.P.
 DRAWN BY A.J.P./S.K.B.
 CHECKED BY S.C.C.
 APPROVED BY D.P.K.

HOR. SCALE 1 : 250
 VERTICAL 1 : 50

RELEASED FOR CONSTRUCTION

DATE AUG. 26, 2009

ENGINEER'S SEAL

PROVINCE OF MANITOBA
 D.P. KRAHN
 10/07/09
 Member
 4226
 REGISTERED PROFESSIONAL ENGINEER

CONSULTANT PROJECT NO.
 09-1893-2000

THE CITY OF WINNIPEG
 WATER AND WASTE DEPARTMENT

2009 SEWER RENEWALS AND REPAIRS, CONTRACT 19

SOUTH DRIVE
 MH AT POINT RD. (E PL) TO
 1ST MH E OF POINT RD.

CITY DRAWING NUMBER
9090

SHEET **05** OF **25**

BID OPPORTUNITY
658-2009