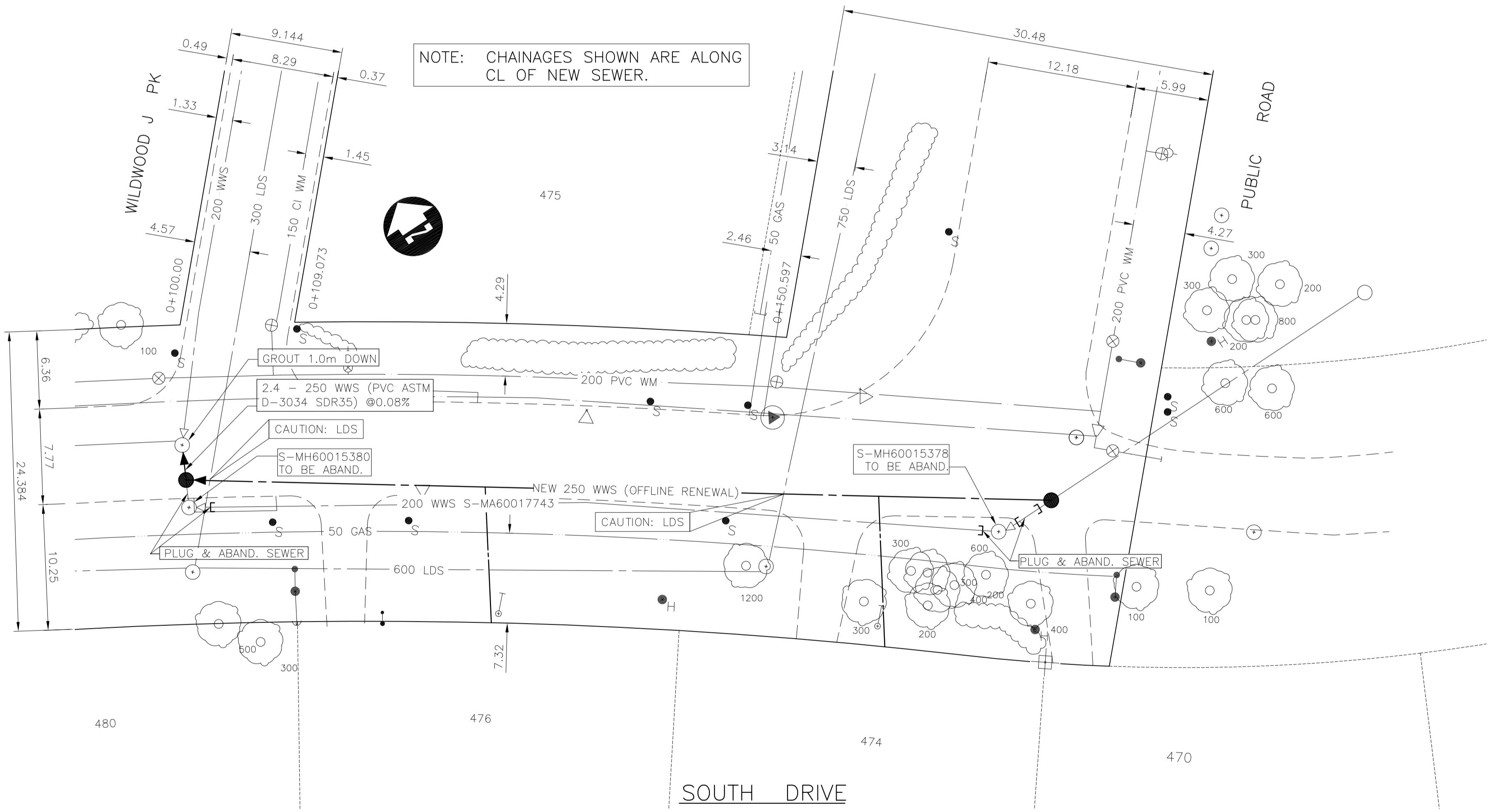


CONSTRUCTION NOTES:

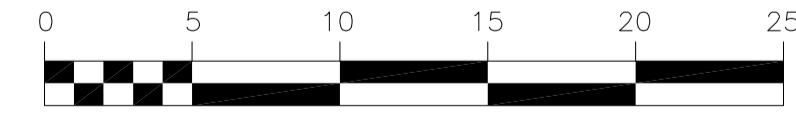
- CONTRACTOR SHALL TAKE PRECAUTIONARY STEPS TO AVOID DAMAGE FROM CONSTRUCTION ACTIVITIES TO EXISTING BOULEVARDS AND TREES WITHIN THE LIMITS OF CONSTRUCTION.
- SEWER AND SEWER SERVICES TO BE INSTALLED BY TRENCHLESS METHODS UNLESS OTHERWISE SPECIFIED.
- LOCATION OF EXISTING UTILITIES TO BE CONFIRMED IN THE FIELD BY THE CONTRACTOR.
- LIMITS OF SIDEWALK RENEWALS TO BE FINALIZED IN THE FIELD BY THE CONTRACT ADMINISTRATOR.
- BOULEVARD REPLACEMENT TO BE FINALIZED IN THE FIELD BY THE CONTRACT ADMINISTRATOR.
- CONTRACTOR TO PLUG ANY ABANDONED PIPES THAT ARE BROKEN DURING CONSTRUCTION.
- TRENCHES & EXCAVATIONS WITHIN 1 METRE OF A PAVED AREA INCLUDING SIDEWALKS SHALL BE CLASS 3 BACKFILL.
- BACKFILL IN BOULEVARD TO BE CLASS 5.
- CB LEADS TO BE INSTALLED AT MIN. 1.0% SLOPE OR AS DIRECTED BY CONTRACT ADMINISTRATOR.
- CONTRACTOR TO CONFIRM THE NUMBER AND LOCATION OF SEWER SERVICES TO BE RECONNECTED.



EXISTING SEWER SERVICE LOCATION RECORDS		
ADDRESS	SIZE/TYPE	SERVICE LOCATION AT PL
SOUTH DR	INFO NOT AVAILABLE	INFO NOT AVAILABLE

SEWER SERVICE INFORMATION (S-MA60017743) *	
DISTANCE FROM MH @ PUBLIC RD	(S-MH60015378)
	NO RECORDS AVAILABLE
* - INFORMATION FROM SEWER VIDEO INSPECTION	

METRIC
WHOLE NUMBERS INDICATE MILLIMETRES
DECIMALIZED NUMBERS INDICATE METRES



APEGM
Certificate of Authorization
Dillon Consulting Limited (MB)
No. 1789 Date: OCT. 7, 2009

150 mm W.M.	WATERMAIN	150 mm W.M.	HYDRO	150 mm W.M.	WATERMAIN	150 mm W.M.
	HYDRANT VALVE		M.T.S. CONCRETE		LAND DRAINAGE SEWER	
	WASTE WATER SEWER		PROPERTY LINE		WASTE WATER SEWER	
	MANHOLE		SURVEY BAR		NORTH/WEST GUTTER	
	CATCH BASIN		SERVICE VALVE		SOUTH/EAST GUTTER	
	CURB INLET		TREE			
	JUNCTIONS		LIGHT STANDARD			
	CULVERT		FENCE			
	GAS		GUY ANCHOR			
EXISTING	LEGEND-PLAN	PROPOSED	EXISTING	LEGEND-PROFILE	PROPOSED	EXISTING

DESIGNED BY C.L.P.			THE CITY OF WINNIPEG WATER AND WASTE DEPARTMENT
DRAWN BY A.J.P./S.K.B.			
CHECKED BY S.C.C.			
APPROVED BY D.P.K.	RELEASSED FOR CONSTRUCTION	CONSULTANT PROJECT NO. 09-1893-2000	2009 SEWER RENEWALS AND REPAIRS, CONTRACT 19 SOUTH DRIVE MH AT WILDWOOD J PK. (E LEG) TO PUBLIC ROAD
HOR. SCALE 1 : 250 VERTICAL 1 : 50	DATE AUG. 26, 2009		CITY DRAWING NUMBER 9089 SHEET 04 OF 25 BID OPPORTUNITY 658-2009