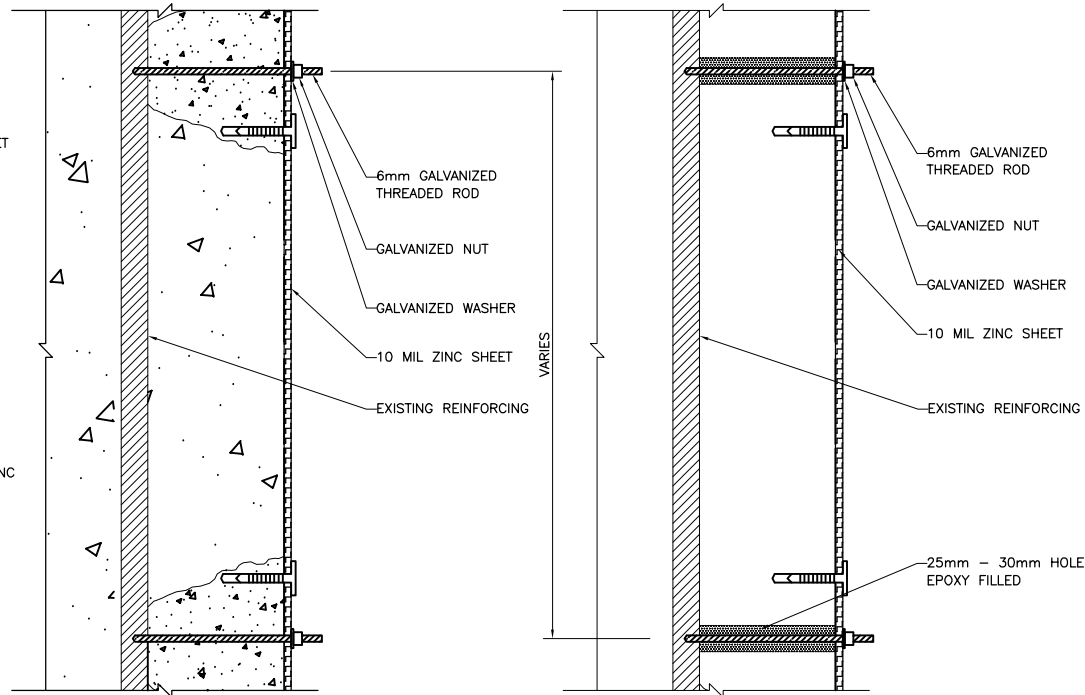
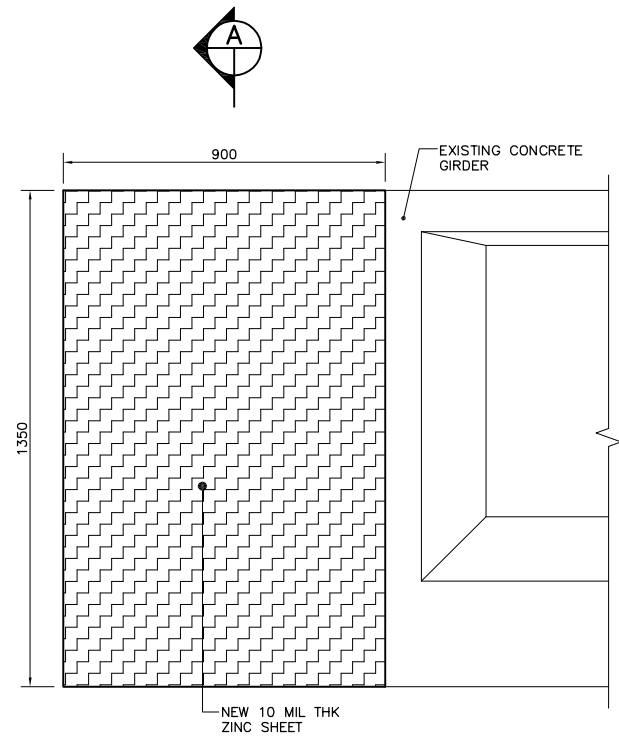


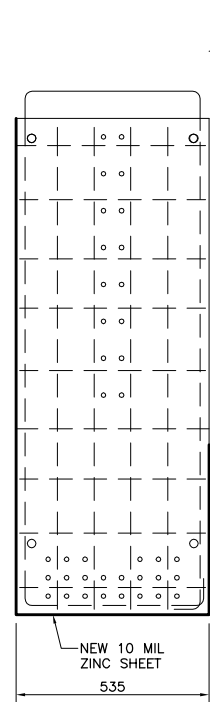
ZINC SHEET CONNECTION STRIP DETAIL  
NTS



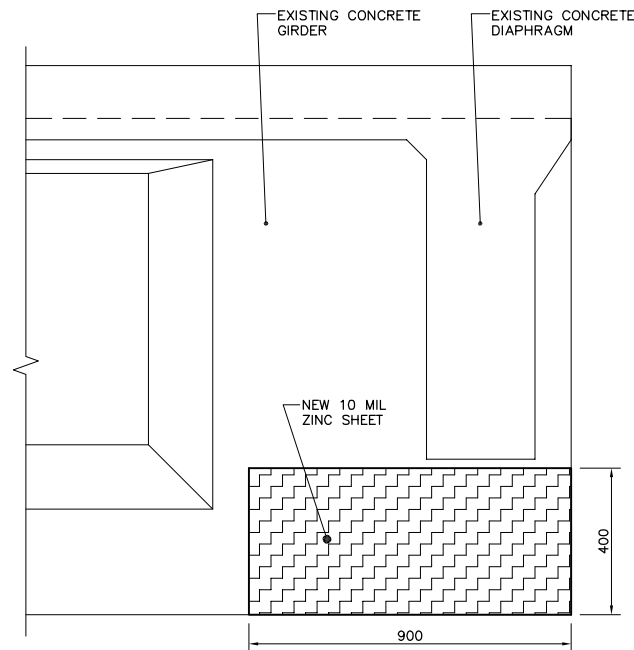
ZINC SHEET ANCHOR CONNECTION DETAIL  
NTS



TYPE 1 END GIRDER METALLIZING DETAIL  
1:10



SECTION A-A  
1:10



TYPE 2 END GIRDER METALLIZING DETAIL  
1:10

- NOTES:
1. COMPLETE ALL NECESSARY REPAIRS, AND ALLOW CONCRETE TO FULLY CURE.
  2. CONCRETE SURFACES ARE TO BE FREE OF ANY BARRIER COATINGS, OIL, GREASE ETC.
  3. CONFIRM ELECTRICAL CONTINUITY OF REINFORCING STEEL.
  4. CONNECT THREADED GALVANIZED ROD TO STEEL VIA, DRILL AND TAP, BRAZE, OR WELD CONNECTION. 2 CONNECTIONS ARE REQUIRED PER VERTICAL FACE, OR 1 EVERY 40m2.
  5. BEFORE ATTACHING ZINC SHEET TO CONCRETE SURFACE MEASURE EXACT LOCATION WHERE GALVANIZED ROD WILL PROTRUDE.
  6. REMOVE ADHESIVE FROM ZINC SHEET AT 50mm AROUND GALVANIZED CONNECTING ROD.
  7. PULL BACK SMALL SECTION OF THE PLASTIC LINER TO EXPOSE THE ELECTROLYTE GEL ADHESIVE AND PLACE THE EDGE OF THE ZINC SHEET INTO PROPER POSITION.
  8. BE SURE ZINC SHEET IS PROPERLY ALIGNED WITH CONCRETE SURFACE, AND STEEL CONNECTIONS.
  9. REMOVE PLASTIC LINER, AND MANUALLY PRESS THE ANODE SHEET ONTO THE CONCRETE SURFACE.
  10. IF MORE THAN ONE PIECE OF GALVANODE ZINC SHEET ANODE IS INSTALLED, ELECTRICALLY CONNECT THE SHEETS TOGETHER BY CONNECTING A CONTINUOUS 50mm PERFORATED 10 MIL ZINC STRIP PERPENDICULAR TO ZINC SHEET. (NOT ANTICIPATED FOR THIS CONTRACT) CONNECT BY SOLDERING OR APPROVED MECHANICAL CONNECTION.
  11. ANCHOR ZINC SHEET USING PLASTIC ANCHORS. TIGHTLY SECURE ZINC SHEET TO SURFACE BY CONNECTING GALVANIZED NUT, AND WASHER TO THREADED ROD.
  12. NUTS AND WASHERS ARE TO BE SEALED WITH A NON-CONDUCTIVE 100% SOLIDS EPOXY.
  13. GALVANODE ZINC SHEETS ARE THEN TO BE SEALED WITH SUITABLE POLYURETHANE SEALANT SUCH AS SIKAFLEX 11FC.

40DILLON Acad FILE: G:\CAD\091645\Contract\Current\Concordia\4\_CONCORDIA\_MET.dwg 6/18/2008



B.M. ELEV.	DESIGNED BY	DDW
	DRAWN BY	DDW
	CHECKED BY	JSB
	APPROVED BY	
	HOR. SCALE	AS NOTED
	VERTICAL SCALE	AS NOTED
0	ISSUED FOR TENDER	06/18/09 JSB
NO.	REVISIONS	DATE BY
		DATE JUNE 2009



**THE CITY OF WINNIPEG**  
PUBLIC WORKS DEPARTMENT

2009 BRIDGE MAINTENANCE  
GIRDER REPAIRS AT ROUTE 20 TWIN OVERPASS OF  
C.P.R. KEEWATIN SUBDIVISION AND CONCORDIA AVENUE

CITY DRAWING NUMBER  
**B123-09-03**  
SHEET 4 OF 4

BID OPPORTUNITY  
**629-2009**

CONSULTANT PROJECT NO.  
091645

RELEASED FOR CONSTRUCTION  
ORIGINAL SIGNED BY B.A. NEIRNCK  
DATE AUG. 18, 2009