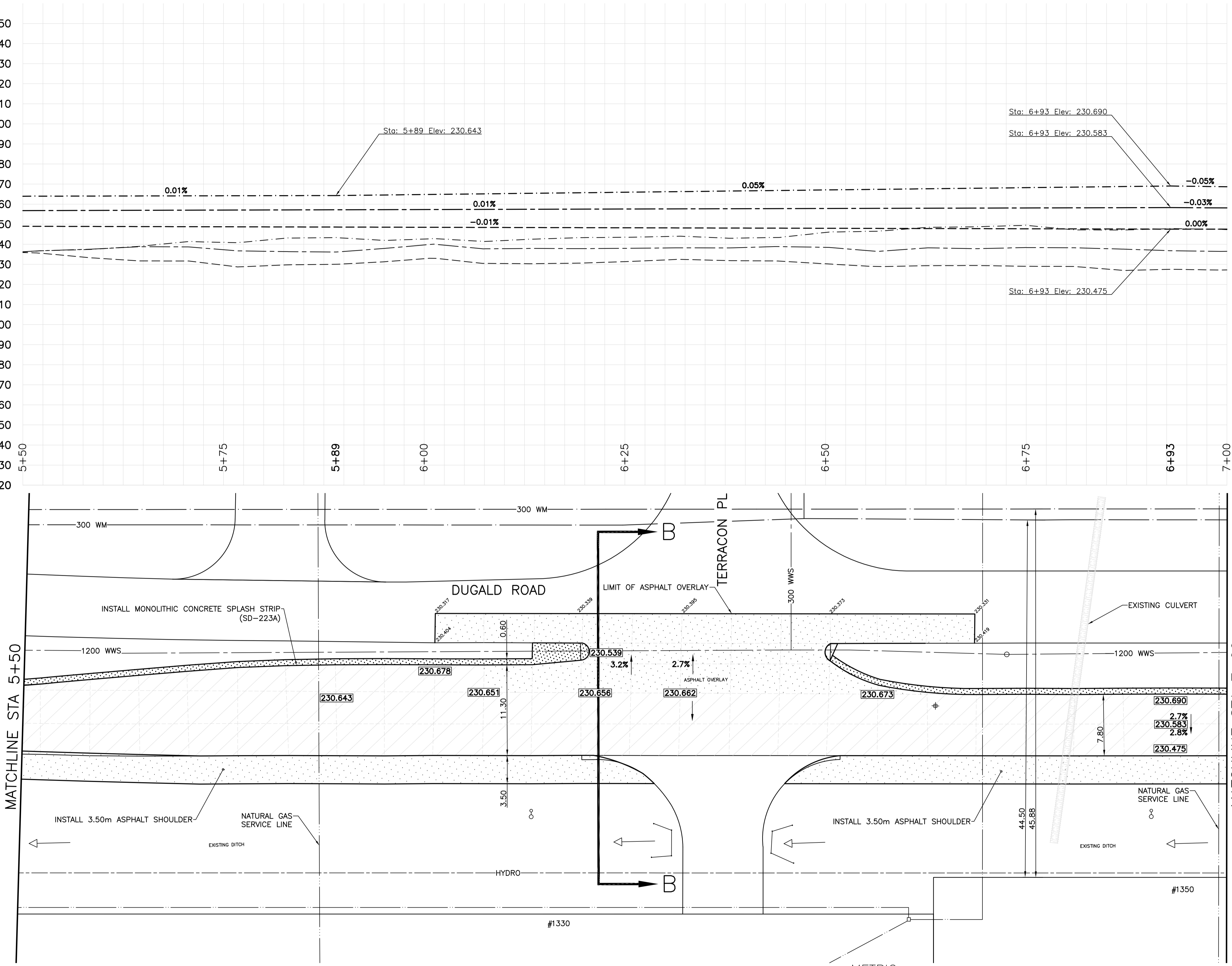


231.50
231.40
231.30
231.20
231.10
231.00
230.90
230.80
230.70
230.60
230.50
230.40
230.30
230.20
230.10
230.00
229.90
229.80
229.70
229.60
229.50
229.40
229.30
229.20

231.50
231.40
231.30
231.20
231.10
231.00
230.90
230.80
230.70
230.60
230.50
230.40
230.30
230.20
230.10
230.00
229.90
229.80
229.70
229.60
229.50
229.40
229.30
229.20



- CONSTRUCTION NOTES**
- 1) CURB REPLACEMENT AS DIRECTED BY THE CONTRACT ADMINISTRATOR
 - 2) ALL STREET RADIUS CURB UNDER 15M RADIUS SHALL BE REPLACED AS MODIFIED OR AS DIRECTED BY THE CONTRACT ADMINISTRATOR
 - 3) PAVEMENT REPAIRS SHOWN ARE ONLY A REPRESENTATIVE SAMPLE OF THE TENDERED QUANTITIES
 - 4) ASPHALT TIE-INS ON APPROACHES TO BE DETERMINED IN THE FIELD BY THE CONTRACT ADMINISTRATOR.
 - 5) ALL BULLNOSES TO HAVE SLOPED FACE.

WARNING

IF POWER EQUIPMENT OR EXPLOSIVES ARE TO BE USED FOR EXCAVATION ON THIS PROJECT THE CONTRACTOR MUST:

- 1) OBTAIN CLEARANCE FROM THE GAS UTILITY PRIOR TO EXCAVATION.
- 2) TAKE PRECAUTION TO AVOID DAMAGE TO GAS UTILITY INSTALLATIONS.

SEE PROVINCIAL REGULATION 210/72 FOR DETAILS

BID OPPORTUNITY NO. 6-2009

—	GUARD RAIL	—	LDS/WWS	—	LOCATION APPROVED
○	O.L.S.	●	WATERMAIN	—	UNDERGROUND STRUCTURES
○	MANHOLE	●	GAS	—	
□	CATCH BASIN	■	ELEVATIONS	231.000	
△	CURB INLET	▲	PROPERTY LINE		
☆	HYDRO POLE	⊕	SURVEY BAR		
○→	TRAFFIC SIGNAL POLE	⊙	GEODEIC BENCH MARK		
←	DITCH FLOW	—	RAMP CURB		
—	CONCRETE	—	ASPHALT/GRAVEL PAV.	—	NORTH GUTTER
—	CURB RENEWAL	—	ASPHALT OVERLAY	—	CENTER LINE
—	MTS	—	PAVED SHOULDER (TYP)	—	SOUTH GUTTER
—	EXISTING	—	LEGEND - PLAN	—	PROPOSED
—	LEGEND - PLAN	—	PROPOSED	—	EXISTING
—	LEGEND - PROFILE	—	PROPOSED	—	EXISTING

LOCATION APPROVED UNDERGROUND STRUCTURES

DATE

NOTE:
LOCATION OF UNDERGROUND STRUCTURES AS SHOWN ARE BASED ON THE BEST INFORMATION AVAILABLE, BUT NO GUARANTEE IS GIVEN THAT ALL EXISTING UTILITIES ARE SHOWN OR THAT THE GIVEN LOCATIONS ARE EXACT. CONFIRMATION OF EXISTENCE AND EXACT LOCATION OF ALL SERVICES MUST BE OBTAINED FROM THE INDIVIDUAL UTILITIES BEFORE PROCEEDING WITH CONSTRUCTION.

B.M. ELEV. GBM 32-008 232.447

ENGINEERING DIVISION
TECHNOLOGY SERVICES BRANCH
106 - 1155 PACIFIC AVE

DESIGNED BY R.M.
CHECKED BY G.C./D.K.
DRAWN BY R.M.
APPROVED BY F.W.C.

HOR. SCALE: 1 : 250
VERTICAL: 1 : 10

DATE 2009/02/26

ENGINEER'S SEAL

PROVINCE OF MANITOBA

F.W. COREY

REGISTERED ENGINEER

ORIGINAL SIGNED BY F.W.C. MARCH 26/09

THE CITY OF WINNIPEG
PUBLIC WORKS DEPARTMENT

DUGALD ROAD EAST BOUND
FROM CNR OVERPASS TO PLESSIS ROAD
ASPHALT OVERLAY AND ASSOCIATED WORKS
FROM STA. 5+50 TO STA. 7+00

CITY DRAWING NUMBER SE-09-11
SHEET 4 OF 21

4