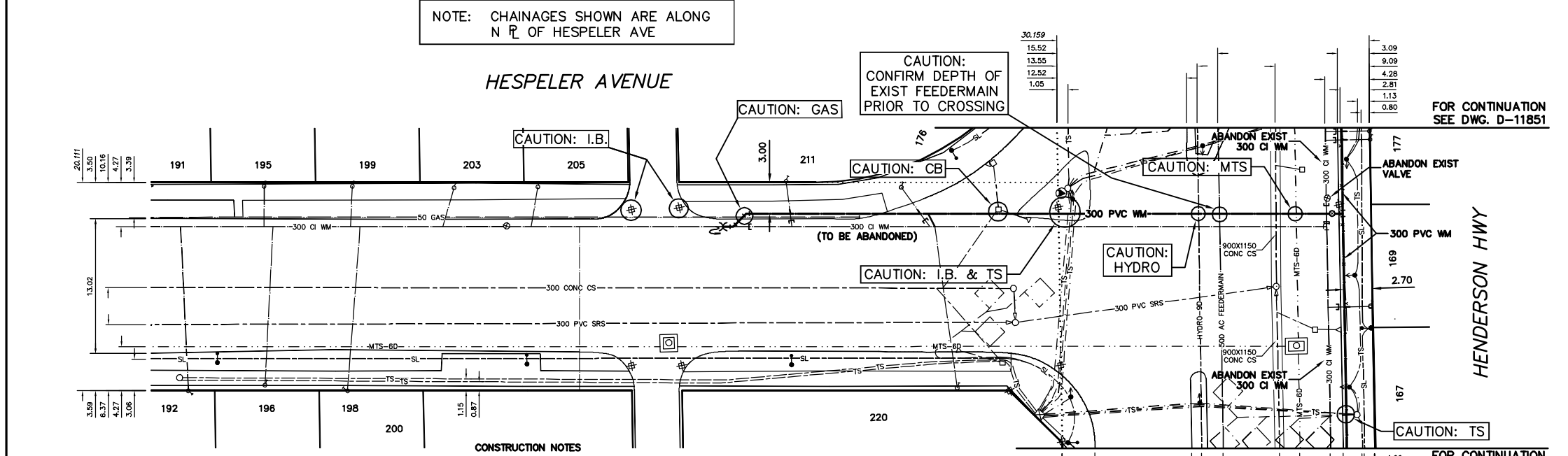
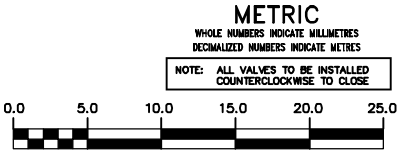
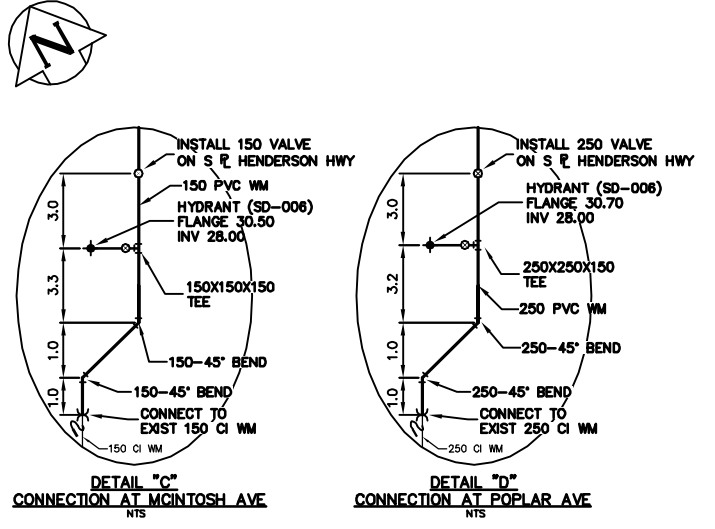


WATER SERVICE INFORMATION					
ADDRESS	SIZE(mm) & TYPE (STREET)	SIZE(mm) & TYPE (PROP)	SHORT & LONG MEASUREMENT	CORP. LOCATION	REMARKS
191 HESPELER AVE	20	20	4.89 WEL HSE	0.6 W OF S/C	-
192 HESPELER AVE	20	20	87.47 WML HENDERSON	0.8 W OF S/C	-
195 HESPELER AVE	20	20	1.01 EEL HSE	OPP S/C	-
198 HESPELER AVE	20	20	4.37 EWL HSE	OPP S/C	-
199 HESPELER AVE	20	12	77.01 WML HENDERSON	0.1 W OF S/C	-
203 HESPELER AVE	12	12	1.77 EWL HSE	0.1 W OF S/C	-
205 HESPELER AVE	20	20	76.06 WML HENDERSON	0.1 W OF S/C	-
206 HESPELER AVE	20	20	1.42 EWL HSE	1.2 E OF S/C	SHARED SERVICE W/#200
207 HESPELER AVE	20	20	68.83 WML HENDERSON	0.2 W OF S/C	-
208 HESPELER AVE	20	20	3.25 EWL HSE	1.2 E OF S/C	SHARED SERVICE W/#198
209 HESPELER AVE	20	20	1.42 EWL HSE	0.6 W OF S/C	-
210 HESPELER AVE	12	12	57.62 WML HENDERSON	1.0 W OF S/C	-
211 HESPELER AVE	20	20	3.89 EWL BLDG	1.0 E OF S/C	RECONNECT SERVICE
212 HESPELER AVE	20	20	25.91 WML HENDERSON	2.8 W OF S/C	RECONNECT SERVICE
213 HESPELER AVE	20	20	9.47 WEL BLDG	4.4 W OF S/C	SERVICED OFF GORDON
214 HESPELER AVE	20	20	10.63 EWL HSE	0.05 S OF S/C	SPLIT SERVICE W/#169
215 HESPELER AVE	20	20	11.62 EEL HENDERSON	0.05 S OF S/C	RECONNECT SERVICE
216 HESPELER AVE	20	20	1.77 NNL BLDG	0.05 S OF S/C	RECONNECT SERVICE
217 HESPELER AVE	20	20	24.49 NNL GORDON	0.05 S OF S/C	RECONNECT SERVICE
218 HESPELER AVE	20	20	24.49 NNL GORDON	2.78 E OF S/C	RECONNECT SERVICE
219 HESPELER AVE	20	20	11.54 WEL BLDG	0.05 S OF S/C	RECONNECT SERVICE
220 HESPELER AVE	12	12	16.99 SSL MCINTOSH	0.5 N OF S/C	RENEW TO R W/20 COPPER
221 HESPELER AVE	12	12	2.83 SSL BLDG	0.5 N OF S/C	RECONNECT SERVICE
222 HESPELER AVE	20	20	14.0 NNL HESPELER	0.05 S OF S/C	RECONNECT SERVICE
223 HESPELER AVE	20	20	6.89 NSL BLDG	0.5 N OF S/C	RECONNECT SERVICE
224 HESPELER AVE	20	20	16.63 SSL MCINTOSH	0.4 N OF S/C	RECONNECT SERVICE
225 HESPELER AVE	20	20	2.03 SNL BLDG	0.4 N OF S/C	SHARED SERVICE W/#180
226 HESPELER AVE	20	20	32.75 SSL HART	2.1 N OF S/C	RECONNECT SERVICE
227 HESPELER AVE	16	16	0.72 SNL BLDG	2.1 N OF S/C	SHARED SERVICE W/#186
228 HESPELER AVE	12	12	5.87 NSL BLDG	1.0 S OF S/C	RENEW TO R W/20 COPPER
229 HESPELER AVE	16	16	5.37 SSL MCINTOSH	2.1 N OF S/C	RECONNECT SERVICE
230 HESPELER AVE	16	16	0.72 SNL BLDG	2.1 N OF S/C	SHARED SERVICE W/#184
231 HESPELER AVE	20	20	20.04 SSL HART	0.6 W OF S/C	RECONNECT SERVICE
232 HESPELER AVE	20	20	9.06 NSL BLDG	OPP S/C	SERVICED OFF MCINTOSH
233 HESPELER AVE	20	20	13.73 EEL HENDERSON	OPP S/C	RECONNECT SERVICE
234 HESPELER AVE	20	20	0.52 NSL BLDG	OPP S/C	RECONNECT SERVICE
235 HESPELER AVE	20	20	17.91 SSL HART	0.1 S OF S/C	RECONNECT SERVICE
236 HESPELER AVE	25	25	1.88 SNL BLDG	0.1 S OF S/C	RECONNECT SERVICE
237 HESPELER AVE	20	20	25.29 NNL MCINTOSH	OPP S/C	SERV. OFF HART, SHARED W/#192
238 HESPELER AVE	20	20	9.53 WEL BLDG	OPP S/C	SERV. OFF HART, SHARED W/#190
239 HESPELER AVE	20	20	9.77 WML HENDERSON	OPP S/C	SERV. OFF HART, SHARED W/#190
240 HESPELER AVE	20	20	9.53 WEL BLDG	OPP S/C	SERVICED OFF HART
241 HESPELER AVE	20	20	13.96 WML HENDERSON	0.6 W OF S/C	RECONNECT SERVICE
242 HESPELER AVE	20	20	5.49 NSL HSE	2.3 N OF S/C	SHARED SERVICE W/#203
243 HESPELER AVE	20	20	13.61 NNL HART	0.6 S OF S/C	RECONNECT SERVICE
244 HESPELER AVE	12	12	OPP NL BLDG	0.6 S OF S/C	SHARED SERVICE W/#203
245 HESPELER AVE	20	20	8.58 EWL BLDG	1.0 E OF S/C	RECONNECT SERVICE
246 HESPELER AVE	20	20	8.76 EEL HENDERSON	0.6 S OF S/C	SHARED SERVICE W/#200
247 HESPELER AVE	12	12	OPP NL BLDG	0.6 S OF S/C	RECONNECT SERVICE
248 HESPELER AVE	20	20	32.85 NNL HART	2.3 W OF S/C	SERVICED OFF POPLAR
249 HESPELER AVE	20	20	13.85 EWL BLDG	2.3 W OF S/C	SERVICED OFF POPLAR
250 HESPELER AVE	20	20	15.01 EEL HENDERSON	-	-

NOTE: CHAINAGES SHOWN ARE ALONG N R OF HESPELER AVE



- CONSTRUCTION NOTES**
1. EXPOSE EXISTING WATERMAIN & CONFIRM INVERTS PRIOR TO CONSTRUCTION.
 2. CONFIRM LOCATION OF ALL SERVICES IN THE FIELD.
 3. INSTALL WATERMAIN BY TRENCHLESS METHODS.
 4. TRENCHES AND EXCAVATIONS WITHIN 1 METRE OF A PAVED AREA INCLUDING SIDEWALKS SHALL BE CLASS 3 BACKFILL.
 5. ALL MATERIALS SHALL CONFORM TO THE CITY OF WINNIPEG STANDARD CONSTRUCTION SPECIFICATIONS.
 6. MINIMUM COVER TO TOP OF WATERMAIN SHALL BE 2.4 m.
 7. REPLACE ALL EXISTING LEAD SERVICES FROM PROPOSED WATERMAIN TO R.
 8. NOTIFY ALL AFFECTED RESIDENTS AND BUSINESSES 24 HOURS IN ADVANCE OF ANY WATER SHUTDOWNS OR DISRUPTION OF SERVICE.



WARNING

IF POWER EQUIPMENT OR EXPLOSIVES ARE TO BE USED FOR EXCAVATION ON THIS PROJECT THE CONTRACTOR MUST:

- 1) NOTIFY THE GAS COMPANY OF THE PROPOSED LOCATION OF EXCAVATION.
- 2) TAKE PRECAUTION TO AVOID DAMAGE TO GAS COMPANY INSTALLATIONS.

SEE PROVINCIAL REGULATION 210/72 FOR DETAILS

200 WM	WATERMAIN	200 WM	SL, HYDRO	150 WM	WATERMAIN	150 WM
+	HYDRANT	+	MTS	+	HYDRANT	+
o	VALVE	o	TRAFFIC SIGNALS	o	VALVE	o
525 LDS	LAND DRAINAGE SEWER	525 LDS	50 GAS	300 LDS	LAND DRAINAGE SEWER	300 LDS
375 WWS	WASTEWATER SEWER	375 WWS	SURVEY BAR	250 WWS	WASTEWATER SEWER	250 WWS
o	MANHOLE	o	FENCE	o	PROFILE	o
v	CATCH BASIN	v	POLE - HYDRO, MTS	v	GROUND ABOVE PIPE	v
∇	CURB INLET	∇	CURB STOP	∇	∅ DITCH (NORTH & WEST)	∇
∇	REDUCER	∇	GUY ANCHOR	∇	∅ DITCH (SOUTH & EAST)	∇
X	COUPLER	X	LIGHT STANDARD	X	GUTTER (NORTH & WEST)	X
∅	ANODE	∅	TREE	∅	GUTTER (SOUTH & EAST)	∅
EXISTING	LEGEND-PLAN	PROPOSED	EXISTING	LEGEND-PLAN	PROPOSED	EXISTING

LOCATION APPROVED UNDERGROUND STRUCTURES		DATE	
SUPV. U/G STRUCTURES COMMITTEE			
NOTE:	LOCATION OF UNDERGROUND STRUCTURES AS SHOWN ARE BASED ON THE BEST INFORMATION AVAILABLE BUT NO GUARANTEE IS GIVEN THAT ALL EXISTING UTILITIES ARE SHOWN OR THAT THE GIVEN LOCATIONS ARE EXACT. CONFIRMATION OF EXISTENCE AND EXACT LOCATION OF ALL SERVICES MUST BE OBTAINED FROM THE INDIVIDUAL UTILITIES BEFORE PROCEEDING WITH CONSTRUCTION.		
NO.	REVISIONS	DATE	BY

CITY OF WINNIPEG WATER AND WASTE ENGINEERING DIVISION

DESIGNED BY: AS
CHECKED BY: SC/KZ

DRAWN BY: CJH
APPROVED BY: KZ

HOR. SCALE: 1:250
VERTICAL: 1:50

RELEASED FOR CONSTRUCTION: K.R. ZUREK
DATE: 2009 08 07

ENGINEER'S SEAL

ORIGINAL SIGNED BY A. SINGBEIL

09/08/07

BID OPPORTUNITY 596-2009
FILENAME: D-11852.dwg
PLOT DATE: 2009 08 07

THE CITY OF WINNIPEG WATER AND WASTE DEPARTMENT

2009 WATERMAIN RENEWALS CONTRACT 42

HESPELER AVENUE
85 W OF HENDERSON HIGHWAY TO HENDERSON HIGHWAY

SHEET 6 OF 6
CITY DRAWING NUMBER: D-11852