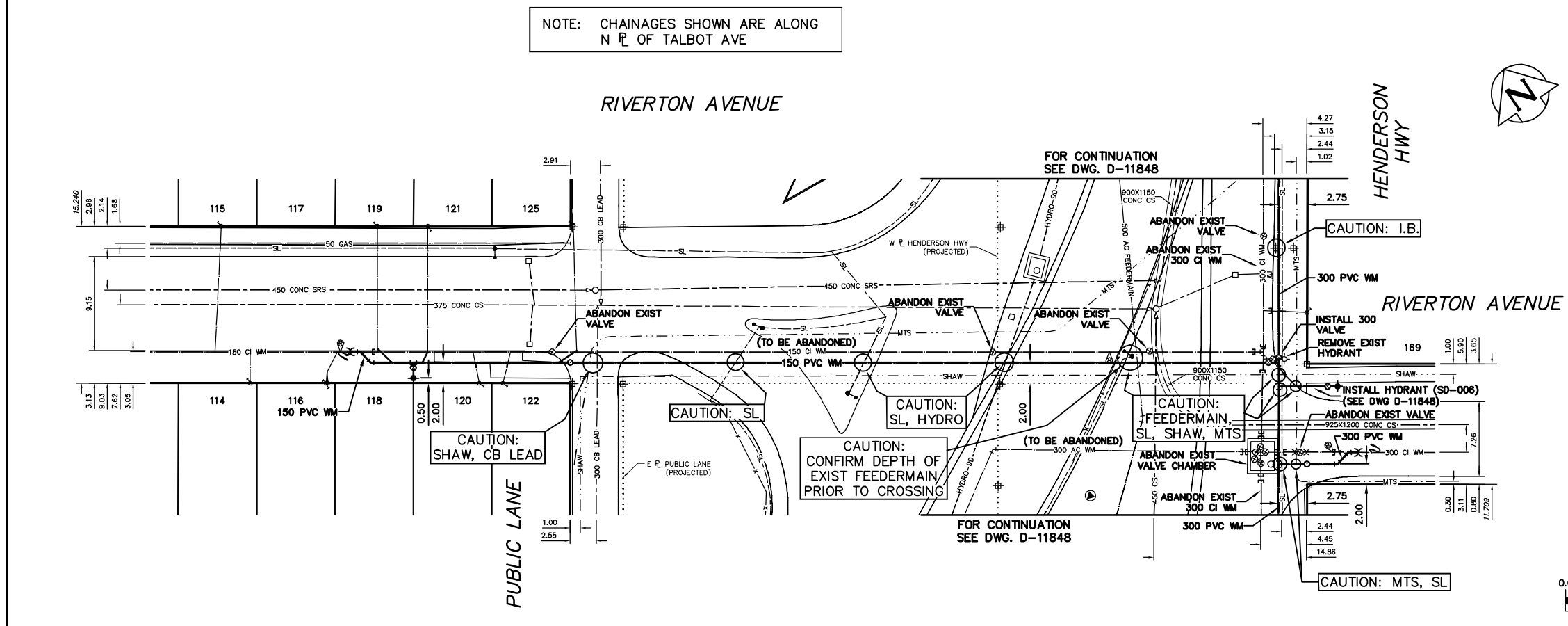


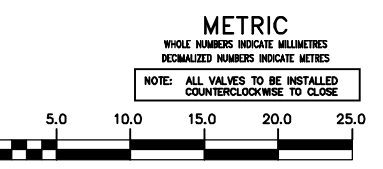
| WATER SERVICE INFORMATION |                          |                        |                          |                |                        |
|---------------------------|--------------------------|------------------------|--------------------------|----------------|------------------------|
| ADDRESS                   | SIZE(mm) & TYPE (STREET) | SIZE(mm) & TYPE (PROP) | SHORT & LONG MEASUREMENT | CORP. LOCATION | REMARKS                |
| 114 RIVERTON AVE          | 20 COPPER                | 20 COPPER              | 0.29 EEL HSE             | OPP S/C        | -                      |
| 115 RIVERTON AVE          | 20 COPPER                | 20 COPPER              | 37.49 EEL MIDWINTER      | OPP S/C        | -                      |
| 116 RIVERTON AVE          | 20 COPPER                | 20 COPPER              | 2.50 WEL HSE             | 0.7 W OF S/C   | -                      |
| 117 RIVERTON AVE          | 20 COPPER                | 20 COPPER              | 34.62 EEL MIDWINTER      | OPP S/C        | SPLIT SERV. W/#118     |
| 118 RIVERTON AVE          | 20 COPPER                | 20 COPPER              | 0.41 EEL HSE             | 1.1 E OF S/C   | SPLIT SERV. W/#118     |
| 119 RIVERTON AVE          | 20 COPPER                | 20 COPPER              | 44.88 EEL MIDWINTER      | OPP S/C        | SPLIT SERV. W/#119     |
| 120 RIVERTON AVE          | 20 COPPER                | 20 COPPER              | 4.56 EEL HSE             | OPP S/C        | SPLIT SERV. W/#119     |
| 121 RIVERTON AVE          | 20 COPPER                | 20 COPPER              | 49.82 EEL MIDWINTER      | OPP S/C        | SPLIT SERV. W/#116     |
| 122 RIVERTON AVE          | 20 COPPER                | 20 COPPER              | 0.78 WEL HSE             | 0.9 E OF S/C   | -                      |
| 123 RIVERTON AVE          | 20 COPPER                | 20 COPPER              | 45.04 EEL MIDWINTER      | OPP S/C        | SPLIT SERV. W/#117     |
| 124 RIVERTON AVE          | 20 COPPER                | 20 COPPER              | 49.82 EEL MIDWINTER      | OPP S/C        | SPLIT SERV. W/#117     |
| 125 RIVERTON AVE          | 20 COPPER                | 20 COPPER              | 0.32 WEL HSE             | 0.6 W OF S/C   | RECONNECT SERVICE      |
| 126 RIVERTON AVE          | 20 COPPER                | 20 COPPER              | 59.72 EEL MIDWINTER      | OPP S/C        | RECONNECT SERVICE      |
| 127 RIVERTON AVE          | 20 COPPER                | 20 COPPER              | 0.78 EWL HSE             | OPP S/C        | RECONNECT SERVICE      |
| 128 RIVERTON AVE          | 20 COPPER                | 20 COPPER              | 54.74 EEL MIDWINTER      | OPP S/C        | RECONNECT SERVICE      |
| 129 RIVERTON AVE          | 20 COPPER                | 20 COPPER              | 62.04 EEL MIDWINTER      | 0.7 E OF S/C   | RECONNECT SERVICE      |
| 130 RIVERTON AVE          | 20 COPPER                | 20 COPPER              | 0.83 EEL HSE             | 0.3 E OF S/C   | RECONNECT SERVICE      |
| 131 RIVERTON AVE          | 20 COPPER                | 20 COPPER              | 68.79 EEL MIDWINTER      | 0.3 S OF S/C   | RECONNECT SERVICE      |
| 132 RIVERTON AVE          | 20 COPPER                | 20 COPPER              | 16.39 NSL BLDG           | 0.3 S OF S/C   | SERV. OFF HENDERSON    |
| 133 RIVERTON AVE          | 20 COPPER                | 20 COPPER              | 20.73 NSL RIVERTON       | 0.3 S OF S/C   | RECONNECT SERVICE      |
| 134 RIVERTON AVE          | 20 COPPER                | 20 COPPER              | 0.73 NSL BLDG            | 0.3 S OF S/C   | SERV. OFF HENDERSON    |
| 135 RIVERTON AVE          | 20 COPPER                | 20 COPPER              | 5.02 NSL RIVERTON        | 0.3 S OF S/C   | RECONNECT SERVICE      |
| 136 RIVERTON AVE          | 12 LEAD                  | 12 LEAD                | 1.02 WEL HSE             | 3.9 W OF S/C   | RENEW TO E W/20 COPPER |
| 137 RIVERTON AVE          | 20 COPPER                | 20 COPPER              | 4.98 EEL HENDERSON       | 0.3 E OF S/C   | RECONNECT SERVICE      |
| 138 RIVERTON AVE          | 20 COPPER                | 20 COPPER              | 0.52 EEL HSE             | 0.3 E OF S/C   | RECONNECT SERVICE      |
| 139 RIVERTON AVE          | 20 COPPER                | 20 COPPER              | 0.52 WEL HSE             | 0.2 E OF S/C   | RECONNECT SERVICE      |
| 140 RIVERTON AVE          | 20 COPPER                | 20 COPPER              | 6.11 EEL MIDWINTER       | 0.2 E OF S/C   | RECONNECT SERVICE      |
| 141 RIVERTON AVE          | 12 LEAD                  | 12 LEAD                | 15.32 EEL MIDWINTER      | 0.5 E OF S/C   | RENEW TO E W/20 COPPER |
| 142 RIVERTON AVE          | 20 COPPER                | 20 COPPER              | 1.28 WEL HSE             | 0.5 E OF S/C   | RECONNECT SERVICE      |
| 143 RIVERTON AVE          | 20 COPPER                | 20 COPPER              | 15.32 EEL MIDWINTER      | 0.2 E OF S/C   | RECONNECT SERVICE      |
| 144 RIVERTON AVE          | 20 COPPER                | 20 COPPER              | 2.10 EWL HSE             | 0.2 E OF S/C   | RECONNECT SERVICE      |
| 145 RIVERTON AVE          | 20 COPPER                | 20 COPPER              | 17.73 EEL MIDWINTER      | 0.1 E OF S/C   | RECONNECT SERVICE      |
| 146 RIVERTON AVE          | 20 COPPER                | 20 COPPER              | 0.41 WEL HSE             | 0.1 E OF S/C   | RECONNECT SERVICE      |
| 147 RIVERTON AVE          | 20 COPPER                | 20 COPPER              | 28.98 EEL MIDWINTER      | 0.1 E OF S/C   | RECONNECT SERVICE      |
| 148 RIVERTON AVE          | 20 COPPER                | 20 COPPER              | 36.31 EEL MIDWINTER      | 0.1 E OF S/C   | RECONNECT SERVICE      |
| 149 RIVERTON AVE          | 20 COPPER                | 20 COPPER              | 1.28 WEL HSE             | 0.9 W OF S/C   | RECONNECT SERVICE      |
| 150 RIVERTON AVE          | 20 COPPER                | 20 COPPER              | 43.30 EEL MIDWINTER      | 0.6 W OF S/C   | RECONNECT SERVICE      |
| 151 RIVERTON AVE          | 20 COPPER                | 20 COPPER              | 3.94 WEL HSE             | 0.6 W OF S/C   | RECONNECT SERVICE      |
| 152 RIVERTON AVE          | 20 COPPER                | 20 COPPER              | 50.03 EEL MIDWINTER      | 3.8 N OF S/C   | SERV. OFF HENDERSON    |
| 153 RIVERTON AVE          | 25 COPPER                | 25 COPPER              | 19.49 NSL MIGHTON        | 0.6 W OF S/C   | RECONNECT SERVICE      |
| 154 RIVERTON AVE          | 20 COPPER                | 20 COPPER              | 5.74 WEL HSE             | OPP S/C        | -                      |
| 155 RIVERTON AVE          | 25 COPPER                | 25 COPPER              | 10.06 EEL HENDERSON      | OPP S/C        | -                      |
| 156 RIVERTON AVE          | 25 COPPER                | 25 COPPER              | -                        | -              | CUT-OFF                |
| 157 RIVERTON AVE          | 25 COPPER                | 25 COPPER              | -                        | -              | CUT-OFF                |
| 158 RIVERTON AVE          | 20 COPPER                | 20 COPPER              | 2.48 SNL HSE             | 0.9 S OF S/C   | RECONNECT SERVICE      |
| 159 RIVERTON AVE          | 20 COPPER                | 20 COPPER              | 24.56 SSL DEARBORN       | 2.9 S OF S/C   | RENEW TO E W/20 COPPER |
| 160 RIVERTON AVE          | 20 COPPER                | 20 COPPER              | 0.50 SNL HSE             | 0.9 S OF S/C   | RECONNECT SERVICE      |
| 161 RIVERTON AVE          | 20 COPPER                | 20 COPPER              | 11.39 SSL DEARBORN       | 0.9 S OF S/C   | RECONNECT SERVICE      |
| 162 RIVERTON AVE          | 20 COPPER                | 20 COPPER              | 1.58 EWL HSE             | OPP S/C        | SERV. OFF DEARBORN     |
| 163 RIVERTON AVE          | 20 COPPER                | 20 COPPER              | 11.71 EEL HENDERSON      | OPP S/C        | RECONNECT SERVICE      |
| 164 RIVERTON AVE          | 100 COPPER               | 100 COPPER             | 47.03 NSL DEARBORN       | OPP S/C        | CEMETARY SERVICE       |
| 165 RIVERTON AVE          | 25 COPPER                | 25 COPPER              | 14.66 NSL BLDG           | OPP S/C        | -                      |
| 166 RIVERTON AVE          | 25 COPPER                | 25 COPPER              | 69.53 NSL DEARBORN       | OPP S/C        | -                      |

\* SERVICES TO BE RENEWED TO E UPON CONFIRMATION BY THE CONTRACTOR OF EXISTING LEAD SERVICE. OBTAIN APPROVAL FROM CONTRACT ADMINISTRATOR PRIOR TO RENEWAL.

NOTE: CHAINAGES SHOWN ARE ALONG N E OF TALBOT AVE



- CONSTRUCTION NOTES**
- EXPOSE EXISTING WATERMAIN & CONFIRM INVERTS PRIOR TO CONSTRUCTION.
  - CONFIRM LOCATION OF ALL SERVICES IN THE FIELD.
  - INSTALL WATERMAIN BY TRENCHLESS METHODS.
  - TRENCHES AND EXCAVATIONS WITHIN 1 METRE OF A PAVED AREA INCLUDING SIDEWALKS SHALL BE CLASS 3 BACKFILL.
  - ALL MATERIALS SHALL CONFORM TO THE CITY OF WINNIPEG STANDARD CONSTRUCTION SPECIFICATIONS.
  - MINIMUM COVER TO TOP OF WATERMAIN SHALL BE 2.4 m.
  - REPLACE ALL EXISTING LEAD SERVICES FROM PROPOSED WATERMAIN TO E.
  - NOTIFY ALL AFFECTED RESIDENTS AND BUSINESSES 24 HOURS IN ADVANCE OF ANY WATER SHUTDOWNS OR DISRUPTION OF SERVICE.



**WARNING**

IF POWER EQUIPMENT OR EXPLOSIVES ARE TO BE USED FOR EXCAVATION ON THIS PROJECT THE CONTRACTOR MUST:

- NOTIFY THE GAS COMPANY OF THE PROPOSED LOCATION OF EXCAVATION.
- TAKE PRECAUTION TO AVOID DAMAGE TO GAS COMPANY INSTALLATIONS.

SEE PROVINCIAL REGULATION 210/72 FOR DETAILS

| EXISTING | LEGEND-PLAN         | PROPOSED | EXISTING  | LEGEND-PLAN       | PROPOSED | EXISTING                | LEGEND-PROFILE | PROPOSED                |
|----------|---------------------|----------|-----------|-------------------|----------|-------------------------|----------------|-------------------------|
| 200 WM   | WATERMAIN           | 200 WM   | SL, HYDRO | SL, HYDRO         | 150 WM   | WATERMAIN               | 150 WM         | WATERMAIN               |
| 525 LDS  | LAND DRAINAGE SEWER | 525 LDS  | 50 GAS    | 50 GAS            | 300 LDS  | LAND DRAINAGE SEWER     | 300 LDS        | LAND DRAINAGE SEWER     |
| 375 WWS  | WASTEWATER SEWER    | 375 WWS  | 250 WWS   | 250 WWS           | 250 WWS  | WASTEWATER SEWER        | 250 WWS        | WASTEWATER SEWER        |
| ○        | MANHOLE             | ●        | ***       | FENCE             | —        | PROFILE                 | —              | PROFILE                 |
| □        | CATCH BASIN         | ■        | * H * T   | POLE - HYDRO, MTS | —        | GROUND ABOVE PIPE       | —              | GROUND ABOVE PIPE       |
| ▽        | CURB INLET          | ◊        | ○         | CURB STOP         | —        | ☉ DITCH (NORTH & WEST)  | —              | ☉ DITCH (NORTH & WEST)  |
| ▽        | REDUCER             | ◊        | —         | GUY ANCHOR        | —        | ☉ DITCH (SOUTH & EAST)  | —              | ☉ DITCH (SOUTH & EAST)  |
| X        | COUPLER             | X        | —         | LIGHT STANDARD    | —        | ☉ GUTTER (NORTH & EAST) | —              | ☉ GUTTER (NORTH & EAST) |
| ⊕        | ANODE               | ⊕        | —         | TREE              | —        | ☉ GUTTER (SOUTH & WEST) | —              | ☉ GUTTER (SOUTH & WEST) |

| LOCATION APPROVED UNDERGROUND STRUCTURES |           | B.M. ELEV. | FIELD BOOK # |
|--|-----------|------------|--------------|
| SUPV. U/G STRUCTURES COMMITTEE           | DATE      |            |              |
| NO.                                      | REVISIONS | DATE       | BY           |

**CITY OF WINNIPEG WATER AND WASTE ENGINEERING DIVISION**

DESIGNED BY: AS  
CHECKED BY: SC/KZ

DRAWN BY: CJH  
APPROVED BY: KZ

HOR. SCALE: 1:250  
VERTICAL: 1:50

RELEASED FOR CONSTRUCTION: K.R. ZUREK  
DATE: 2009 08 07

ENGINEER'S SEAL

ORIGINAL SIGNED BY A. SINGBEIL  
09/08/07

BID OPPORTUNITY 596-2009  
FILENAME: D-11850.dwg  
PLOT DATE: 2009 08 07

**THE CITY OF WINNIPEG WATER AND WASTE DEPARTMENT**

2009 WATERMAIN RENEWALS CONTRACT 42  
RIVERTON AVENUE  
28 E OF MIDWINTER AVENUE TO HENDERSON HIGHWAY

SHEET 4 OF 6  
CITY DRAWING NUMBER: D-11850