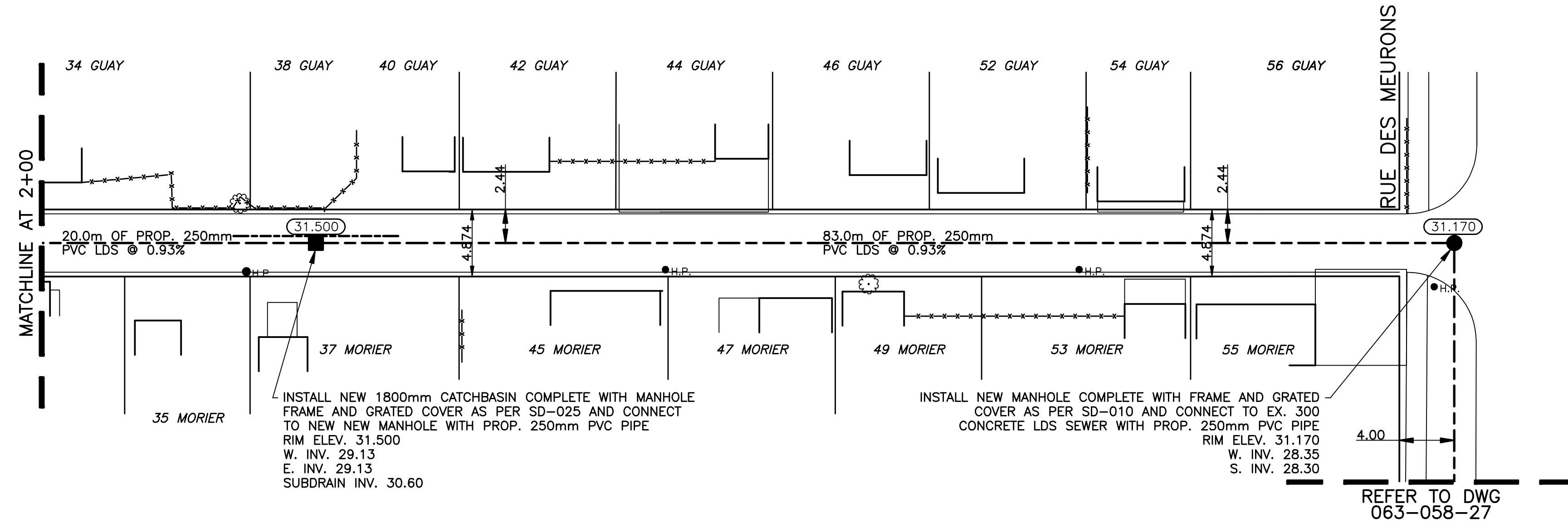


CHAINAGE ALONG CENTER OF ROW

GUAY / MORIER ALLEY LDS



BENCHMARK:
 D.B.M. IN GUAY PARK, ST. MARY'S RD. OPPOSITE GUAY AVE.,
 6.1m S. OF C.L. OF ASPHALT WALK TO WAR MEMORIAL,
 W. OF MAIN ENTRANCE, & 11.7m W. OF W.L. OF ST. MARY'S RD.

METRIC
 WHOLE NUMBERS INDICATE MILLIMETRES
 DECIMAL NUMBERS INDICATE METRES

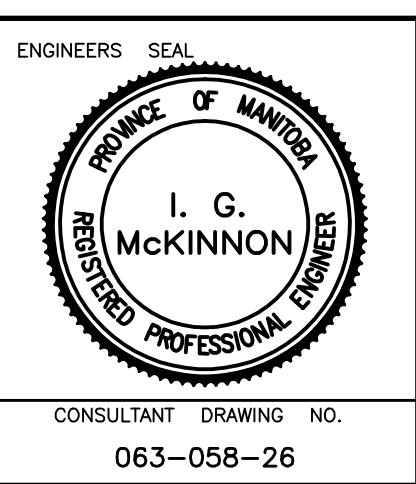
INSTALL PVC SUBDRAINS BETWEEN
 STA. 2+14 AND 2+26



—	WATERMAIN	—	HYDRO	—	CENTER LINE
—	HYDRANT	—	M.T.S.	—	NORTH GUTTER LINE
—	VALVE	—	CONCRETE	—	SOUTH GUTTER LINE
—	LAND DRAINAGE SEWER	—	ASPHALT	—	WATERMAIN
—	WASTE WATER SEWER	—	PROPERTY LINE	—	VALVE
—	MANHOLE	—	SURVEY BAR	—	LAND DRAINAGE SEWER
—	CATCH BASIN	—	CURB STOP	—	WASTE WATER SEWER
—	CURB INLET	—	C.B. LEAD	—	TESTHOLE
—	TRAFFIC SIGNAL	—	SIDEWALK	—	ASPH./CONC. PAD
—	STEAM HT.	—	SIDEWALK RAMP	—	GARAGE PAD
—	GAS	—	ELEVATIONS	—	
—	EXISTING	—	PROPOSED	—	EXISTING
—	LEGEND - PLAN	—	PROPOSED	—	LEGEND - PROFILE
—		—		—	PROPOSED

LOCATION APPROVED	
B.M. ELEV.	QWB# 34-001 231.117
DESIGNED BY	R.H.
CHECKED BY	S.M.
DRAWN BY	R.H.
APPROVED BY	I.McK.
HOR. SCALE:	1:250
VERT. SCALE:	1:50
RELEASED FOR CONSTRUCTION	
CONSULTANT DRAWING NO.	063-058-26

GENIVAR
 10 PRAIRIE WAY WINNIPEG, MANITOBA R2J 3J8
 Ph: (204)-477-6880 Fax: (204)-474-2864



THE CITY OF WINNIPEG
WATER AND WASTE DEPARTMENT

2009 LOCAL IMPROVEMENTS
GUAY / MORIER ALLEY
LAND DRAINAGE SEWER

FROM MATCHLINE AT STATION 2+00
 TO MANHOLE AT STATION 3+03.01

CITY DRAWING NO.
 SHEET 2 OF 3
 594-2009