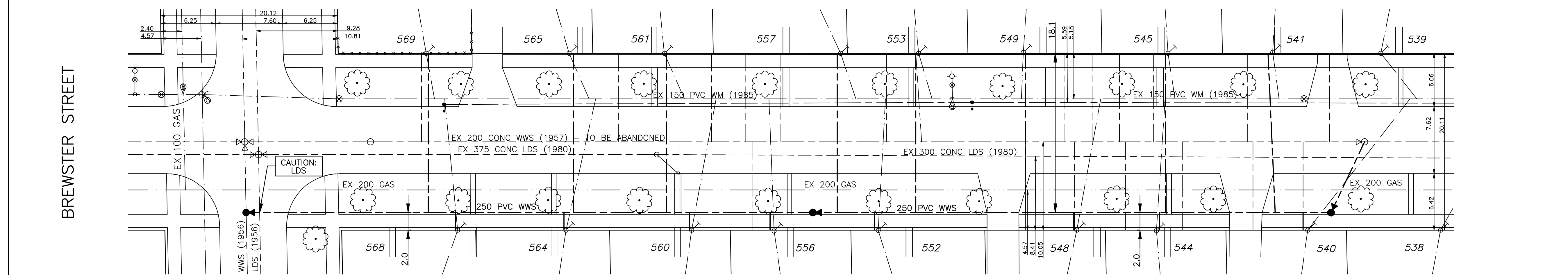
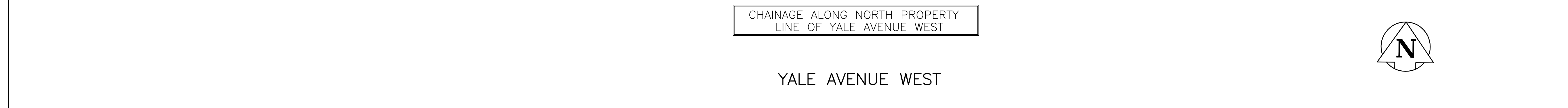


ADDRESS	SIZE (MM) & TYPE (STREET)	SHORT & LONG MEASUREMENT	COSP LOCATION
539 YALE AVE	30 9" W.E. LINE		
539 YALE AVE	RESIDENTIAL COPPER 310' FR. HSE. FRT.		
539 YALE AVE	30 5" W.E. LINE		
539 YALE AVE	RESIDENTIAL COPPER 380' FR. HSE. FRT.		
539 YALE AVE	30 5' W.E. LINE		
539 YALE AVE	RESIDENTIAL COPPER 28' FR. HSE. FRT.		
539 YALE AVE	30 12" W.E. LINE		
539 YALE AVE	RESIDENTIAL COPPER 360' FR. HSE. FRT.		
540 YALE AVE	30 13' W.E. LINE		
540 YALE AVE	RESIDENTIAL COPPER 31' FR. HSE. FRT.		
540 YALE AVE	30 6' W.E. LINE		
540 YALE AVE	RESIDENTIAL COPPER 6' FR. HSE. FRT.		
540 YALE AVE	30 6' W.E. HSE.		
540 YALE AVE	RESIDENTIAL COPPER 29' FR. HSE. FRT.		
541 YALE AVE	30 15' W.E. LINE		
541 YALE AVE	RESIDENTIAL COPPER 37' FR. HSE. FRT.		
541 YALE AVE	30 10' W.E. LINE		
541 YALE AVE	RESIDENTIAL COPPER 260' FR. HSE. FRT.		
541 YALE AVE	30 6' W.E. LINE		
541 YALE AVE	RESIDENTIAL COPPER 28' FR. HSE. FRT.		
541 YALE AVE	30 15' W.E. LINE		
541 YALE AVE	RESIDENTIAL COPPER 350' FR. HSE. FRT.		
541 YALE AVE	30 7' W.E. LINE		
541 YALE AVE	RESIDENTIAL COPPER 250' FR. HSE. FRT.		
541 YALE AVE	30 14' W.E. LINE		
541 YALE AVE	RESIDENTIAL COPPER 310' FR. HSE. FRT.		
541 YALE AVE	30 17' W.E. LINE		
541 YALE AVE	RESIDENTIAL COPPER 30' FR. HSE. FRT.		
541 YALE AVE	30 4' W.E. LINE		
541 YALE AVE	RESIDENTIAL COPPER 30' FR. HSE. FRT.		
541 YALE AVE	30 11' W.E. LINE		
541 YALE AVE	RESIDENTIAL COPPER 32' FR. HSE. FRT.		
541 YALE AVE	30 4' W.E. LINE		
541 YALE AVE	RESIDENTIAL COPPER 145' FROM HOUSE FRONT		
541 YALE AVE	30 6' W.E. LINE		
541 YALE AVE	RESIDENTIAL COPPER 12' FR. HSE. FRT.		
541 YALE AVE	30 4' W.E. LINE		
541 YALE AVE	RESIDENTIAL COPPER 38' FR. HSE. FRT.		
541 YALE AVE	30 9' W.E. LINE		
541 YALE AVE	RESIDENTIAL COPPER 350' FR. HSE. FRT.		
541 YALE AVE	30 19' W.E. LINE		
541 YALE AVE	RESIDENTIAL COPPER 360' FR. HSE. FRT.		
541 YALE AVE	30 11' W.E. H/W/L		
541 YALE AVE	RESIDENTIAL COPPER 37' FR. HSE. FRT.		
541 YALE AVE	30 4' E.E. LINE		
541 YALE AVE	RESIDENTIAL COPPER 350' FR. HSE. FRT.		
541 YALE AVE	30 17' W.E. LINE		
541 YALE AVE	RESIDENTIAL COPPER 31' FR. HSE. FRT.		
541 YALE AVE	30 5' W.E. LINE		
541 YALE AVE	RESIDENTIAL COPPER 38' FR. HSE. FRT.		
541 YALE AVE	30 9' W.E. LINE		
541 YALE AVE	RESIDENTIAL COPPER 370' FR. HSE. FRT.		
541 YALE AVE	30 9' W.E. H/W		
541 YALE AVE	RESIDENTIAL COPPER 30' FR. HSE. FRT.		
541 YALE AVE	30 7' E/RH		
541 YALE AVE	RESIDENTIAL COPPER 32' FR. HSE. FRT.		
541 YALE AVE	30 7' W.E. LINE		
541 YALE AVE	RESIDENTIAL COPPER 32' FR. HSE. FRT.		
541 YALE AVE	30 4' W.E. LINE		
541 YALE AVE	RESIDENTIAL COPPER 370' FR. HSE. FRT.		



SEWER JUNCTION INFORMATION	FROM SEWER VIDEO INSPECTION	SEWER ID: S-MA-4003244	DISTANCE FROM 10M ADDRESS
4.0 m W	150 Ø	NORTH	
7.0 m W	150 Ø	SOUTH	
13.7 m W	150 Ø	SOUTH	
13.3 m W	150 Ø	NORTH	
20.7 m W	150 Ø	SOUTH	
24.0 m W	150 Ø	NORTH	
27.2 m W	150 Ø	NORTH	
31.0 m W	150 Ø	SOUTH	
33.0 m W	150 Ø	NORTH	
34.2 m W	150 Ø	SOUTH	
38.6 m W	150 Ø	SOUTH	
50.4 m W	150 Ø	NORTH	
54.4 m W	150 Ø	NORTH	
66.5 m W	150 Ø	NORTH	
69.6 m W	150 Ø	SOUTH	
70.4 m W	150 Ø	NORTH	
74.3 m W	150 Ø	NORTH	
77.9 m W	150 Ø	SOUTH	
84.9 m W	150 Ø	NORTH	
107.3 m W	150 Ø	NORTH	

APECM
Certificate of Authorization
GENIVAR Consultants
No. 4318 Expiry: April 30, 2010

CONSTRUCTION NOTES:

1. LOCATION OF UNDERGROUND STRUCTURES AS SHOWN ARE BASED ON THE BEST INFORMATION AVAILABLE. NO GUARANTEE IS GIVEN THAT ALL EXISTING UTILITIES ARE SHOWN OR THAT THE GIVEN LOCATIONS ARE EXACT.
2. CONFIRMATION OF EXISTENCE AND EXACT LOCATION OF ALL SERVICES MUST BE OBTAINED FROM THE INDIVIDUAL UTILITIES BY THE CONTRACTOR BEFORE PROCEEDING WITH CONSTRUCTION.
3. CONTRACTOR TO EXPOSE EXISTING SEWER MAINS AT ALL CONNECTION LOCATIONS TO ALLOW ENGINEER TO VERIFY EXISTING INVERTS, MATERIAL TYPE AND SIZE PRIOR TO CONSTRUCTION.
4. SEWER TO BE INSTALLED BY TRENCHLESS METHODS.
5. BACKFILL TO BE CLASS 5 WITHIN BOULEVARD AND CLASS 3 WHEN WITHIN PAVEMENT/SIDEWALK OR WHEN WITHIN 1.0M OF PAVEMENT OR SIDEWALK.
6. ALL SERVICES TO BE RENEW TO THE PROPERTY LINE.
7. ALL SERVICES TO HAVE MIN. 1.0% SLOPE.
8. ALL MANHOLES TO HAVE STD. 1200 DIA. BASE UNLESS OTHERWISE INDICATED.
9. CONTRACTOR TO MAINTAIN ALL EXISTING SEWER FLOWS DURING CONSTRUCTION.
10. CONSTRUCTION OF PROPERTY LIMITS, AND EXISTING AND/OR PROPOSED FEATURES RELATIVE TO THESE LIMITS AS SHOWN ON THIS DRAWING DO NOT REPRESENT A LEGAL SURVEY. GENIVAR MAKES NO REPRESENTATION OR GUARANTEE THAT THE PROPERTY LIMIT INFORMATION IS ACCURATE. GENIVAR ACCEPTS NO RESPONSIBILITY FOR DAMAGES, IF ANY, SUFFERED BY ANY THIRD PARTY AS A RESULT OF DECISIONS OR ACTIONS BASED ON THIS DRAWING.

METRIC
WHOLE NUMBERS INDICATE MILLIMETRES
DECIMALIZED NUMBERS INDICATE METRES

EXISTING	LEGEND - PLAN	PROPOSED	EXISTING	LEGEND - PLAN	PROPOSED	EXISTING	LEGEND - PROFILE	PROPOSED
---	WATERMAIN	---	---	REDUCER	---	---	WATERMAIN	---
⊕	HYDRANT	⊕	⊕	PLUG	⊕	⊕	VALVE	⊕
⊗	VALVE	⊗	⊗	TRAFFIC SIGNAL	⊗	⊗	LAND DRAINAGE SEWER	⊗
---	LAND DRAINAGE SEWER	---	---	GAS	---	---	WASTE WATER SEWER	---
---	WASTE WATER SEWER	---	---	HYDRO	---	---	JUNCTIONS	---
○	MANHOLE	○	○	M.T.S.	○	○	CULVERT	---
□	CATCH BASIN	□	□	SURVEY BAR	□	□		
△	CURB INLET	△	△	CURB STOP	△	△		
+	TEE	+	+	C.B. LEAD	+	+		
⋈	BEND	⋈	⋈	TREE	⋈	⋈		
⊖	ANODE	⊖	⊖	LAMP STANDARD	⊖	⊖		

LOCATION APPROVED
SUPV. U/G STRUCTURES DATE COMMITTEE
NOTE:
LOCATION OF UNDERGROUND STRUCTURES AS SHOWN ARE BASED ON THE BEST INFORMATION AVAILABLE BUT NO GUARANTEE IS GIVEN THAT ALL EXISTING UTILITIES ARE SHOWN OR THAT THE GIVEN LOCATIONS ARE EXACT. CONFIRMATION OF EXISTENCE AND EXACT LOCATION OF ALL SERVICES MUST BE OBTAINED FROM THE INDIVIDUAL UTILITIES BEFORE PROCEEDING WITH CONSTRUCTION.

NO.	REVISIONS	DATE	BY
2	REVISED SEWER GRADE TO 0.50%	AUG 09	MBS
1	BID OPPORTUNITY 588-2009	AUG 09	MBS

GENIVAR
10 PRAIRIE WAY WINNIPEG, MANITOBA R2J 3J8
PH: (204)-477-8650 FAX: (204)-474-2864

DESIGNED BY: MBS
CHECKED BY: DJ
DRAWN BY: MBS
APPROVED BY: IMcK
HOR. SCALE: 1:250
VERT. SCALE: 1:50
DATE: AUG 6 2009
RELEASED FOR CONSTRUCTION: KAZ ZUREK, P.ENG
DATE: AUG 10 2009

ENGINEERS SEAL
PROVINCE OF MANITOBA
REGISTERED PROFESSIONAL ENGINEER
I. G. MCKINNON

THE CITY OF WINNIPEG
WATER AND WASTE DEPARTMENT

2009 SEWER RENEWALS
SEWER RENEWALS
YALE AVENUE WEST
2ND MH WEST OF HOKA STREET TO
3RD MH WEST OF HOKA STREET

SHEET 1 OF 1
CITY DRAWING NO. 8995