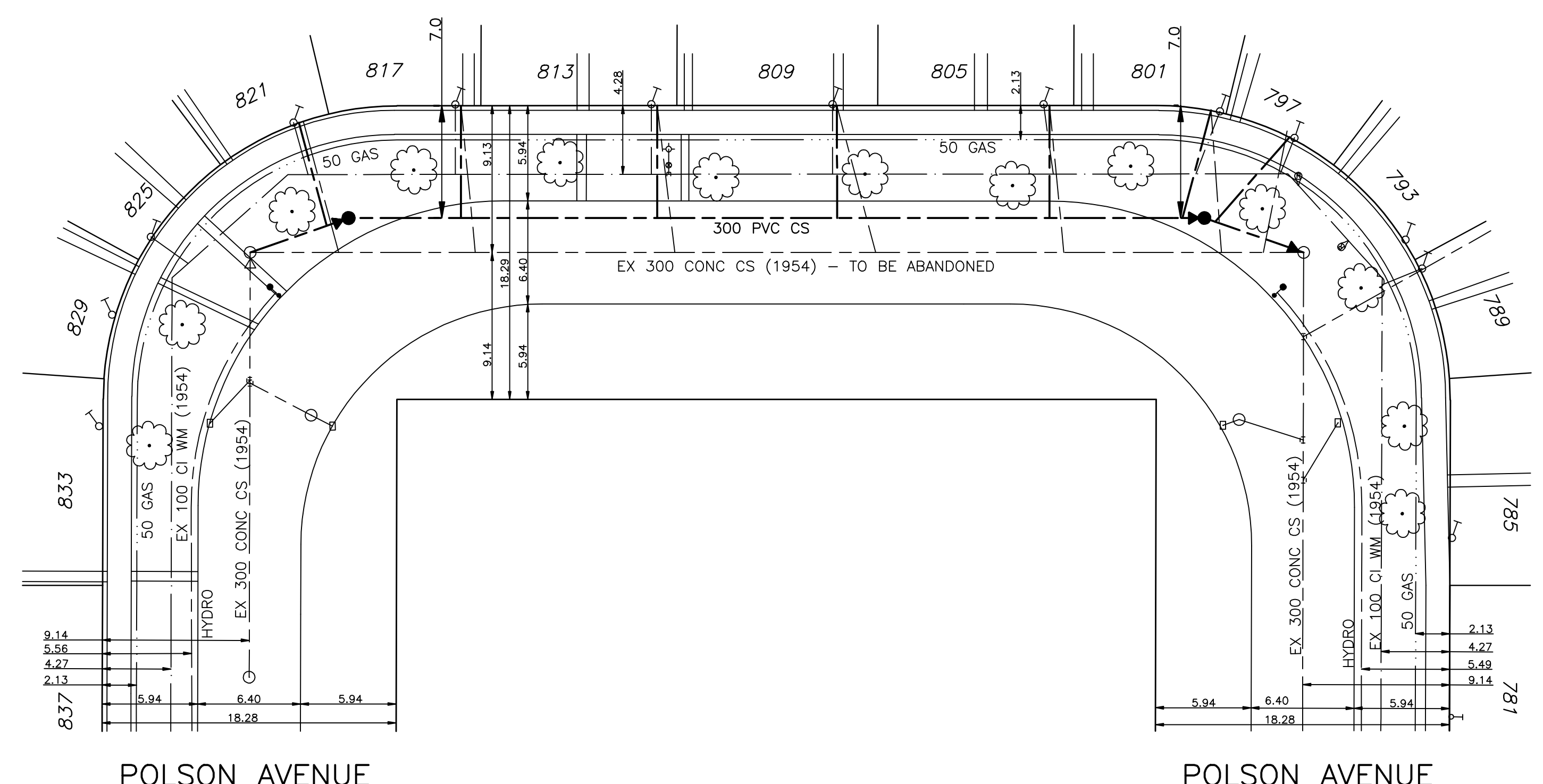


CHAINAGE ALONG SOUTH PROPERTY LINE OF POLSON BAY (N. LEG)

POLSON BAY



SEWER/JUNCTION INFORMATION			
FROM SEWER VIDEO INSPECTION	SEWER ID	SIZE (mm)	TYPE
3.9 m E	5-MA 0001345	150	NORTH
5.5 m E		150	NORTH
14.0 m E		150	NORTH
20.4 m E		150	NORTH
38.9 m E		150	NORTH
50.6 m E		150	NORTH
60.4 m E		150	NORTH
63.0 m E		150	NORTH

WATER SERVICE INFORMATION			
ADDRESS	SIZE (mm)	SHORT & LONG MEASUREMENT	CORP. LOCATION
789 POLSON AVE	34	14 NML OF HOUSE	OPP S/C
793 POLSON AVE	34	13.5 NML OF POLSON BAY	
797 POLSON AVE	34	12.5 S NML OF POLSON BAY	
801 POLSON AVE	34	4.8 WEL OF HOUSE	5 E OF S/C
805 POLSON AVE	34	29 E 1ST WEL W SINCLAIR	OPP S/C
809 POLSON AVE	34	5 WEL OF HOUSE	2 W OF S/C
813 POLSON AVE	34	7 W 1ST WEL W SINCLAIR	OPP S/C
817 POLSON AVE	34	4 WEL HOUSE	OPP S/C
821 POLSON AVE	34	2 WEL HOUSE	OPP S/C
825 POLSON AVE	34	2 WEL HOUSE	OPP S/C
829 POLSON AVE	34	87 W 1ST WEL W SINCLAIR	OPP S/C
833 POLSON AVE	34	2 WEL HOUSE	OPP S/C
837 POLSON AVE	34	127 W 1ST WEL W SINCLAIR	OPP S/C
841 POLSON AVE	34	14 E WEL HOUSE	3 E OF S/C
845 POLSON AVE	34	360 W 1ST WEL W SINCLAIR	OPP S/C
849 POLSON AVE	34	15.5 WEL HOUSE	OPP S/C
853 POLSON AVE	34	126.5 NML OF POLSON BAY	OPP S/C



- CONSTRUCTION NOTES:**
- LOCATION OF UNDERGROUND STRUCTURES AS SHOWN ARE BASED ON THE BEST INFORMATION AVAILABLE. NO GUARANTEE IS GIVEN THAT ALL EXISTING UTILITIES ARE SHOWN OR THAT THE GIVEN LOCATIONS ARE EXACT.
 - CONFIRMATION OF EXISTENCE AND EXACT LOCATION OF ALL SERVICES MUST BE OBTAINED FROM THE INDIVIDUAL UTILITIES BY THE CONTRACTOR BEFORE PROCEEDING WITH CONSTRUCTION.
 - CONTRACTOR TO EXPOSE EXISTING SEWER MAINS AT ALL CONNECTION LOCATIONS TO ALLOW ENGINEER TO VERIFY EXISTING INVERTS, MATERIAL TYPE AND SIZE PRIOR TO CONSTRUCTION.
 - SEWER TO BE INSTALLED BY TRENCHLESS METHODS.
 - BACKFILL TO BE CLASS 5 WITHIN BOULEVARD AND CLASS 3 WHEN WITHIN PAVEMENT/SIDEWALK OR WHEN WITHIN 1.0m OF PAVEMENT OR SIDEWALK.
 - ALL SERVICES TO BE RENEW TO THE PROPERTY LINE.
 - ALL SERVICES TO HAVE MIN. 1.0% SLOPE.
 - ALL MANHOLES TO HAVE STD. 1200 DIA. BASE UNLESS OTHERWISE INDICATED.
 - CONTRACTOR TO MAINTAIN ALL EXISTING SEWER FLOWS DURING CONSTRUCTION.
 - DESCRIPTION OF PROPERTY LIMITS, AND EXISTING AND/OR PROPOSED FEATURES RELATIVE TO THESE LIMITS AS SHOWN ON THIS DRAWING DO NOT REPRESENT A LEGAL SURVEY. GENIVAR MAKES NO REPRESENTATION OR GUARANTEE THAT THE PROPERTY LIMIT INFORMATION IS ACCURATE. GENIVAR ACCEPTS NO RESPONSIBILITY FOR DAMAGES, IF ANY, SUFFERED BY ANY THIRD PARTY AS A RESULT OF DECISIONS OR ACTIONS BASED ON THIS DRAWING.

METRIC
WHOLE NUMBERS INDICATE MILLIMETRES
DECIMALIZED NUMBERS INDICATE METRES

EXISTING	LEGEND - PLAN	PROPOSED	EXISTING	LEGEND - PLAN	PROPOSED	EXISTING	LEGEND - PROFILE	PROPOSED
---	WATERMAIN	---	---	REDUCER	---	---	WATERMAIN	---
⊕	HYDRANT	⊕	⊕	PLUG	⊕	⊕	VALVE	⊕
⊗	VALVE	⊗	⊗	TRAFFIC SIGNAL	⊗	⊗	LAND DRAINAGE SEWER	⊗
---	LAND DRAINAGE SEWER	---	---	GAS	---	---	WASTE WATER SEWER	---
---	WASTE WATER SEWER	---	---	HYDRO	---	---	JUNCTIONS	---
○	MANHOLE	○	○	M.T.S.	○	○	CULVERT	○
□	CATCH BASIN	□	□	SURVEY BAR	□	□	COMBINED SEWER	□
△	CURB INLET	△	△	CURB STOP	△	△		
+	TEE	+	+	C.B. LEAD	+	+		
∩	BEND	∩	∩	TREE	∩	∩		
⊖	ANODE	⊖	⊖	LAMP STANDARD	⊖	⊖		

LOCATION APPROVED

B.M. ELEV. ZONE 55, No. 1 231.460

DESIGNED BY MBS
DRAWN BY MBS
HOR. SCALE: 1:250
VERT. SCALE: 1:50
DATE AUG 6 2009

CHECKED BY DJ
APPROVED BY IMcK
RELEASED FOR ORIGINAL CONSTRUCTION
DATE AUG 10 2009

GENIVAR
10 PRAIRIE WAY WINNIPEG, MANITOBA R2J 3J8
PH: (204)-477-6650 FAX: (204)-474-2884

ENGINEERS SEAL
I. G. MCKINNON
REGISTERED PROFESSIONAL ENGINEER
CONSULTANT DRAWING NO. 09-101-02

THE CITY OF WINNIPEG
WATER AND WASTE DEPARTMENT

2009 CAPITAL WORKS
SEWER RENEWALS
POLSON BAY (2nd BAY EAST OF AIRLIES ST.)
NORTH MH OF WEST LEG OF POLSON BAY TO
NORTH MH OF EAST LEG OF POLSON BAY

SHEET 1 OF 1
CITY DRAWING NO. 8990