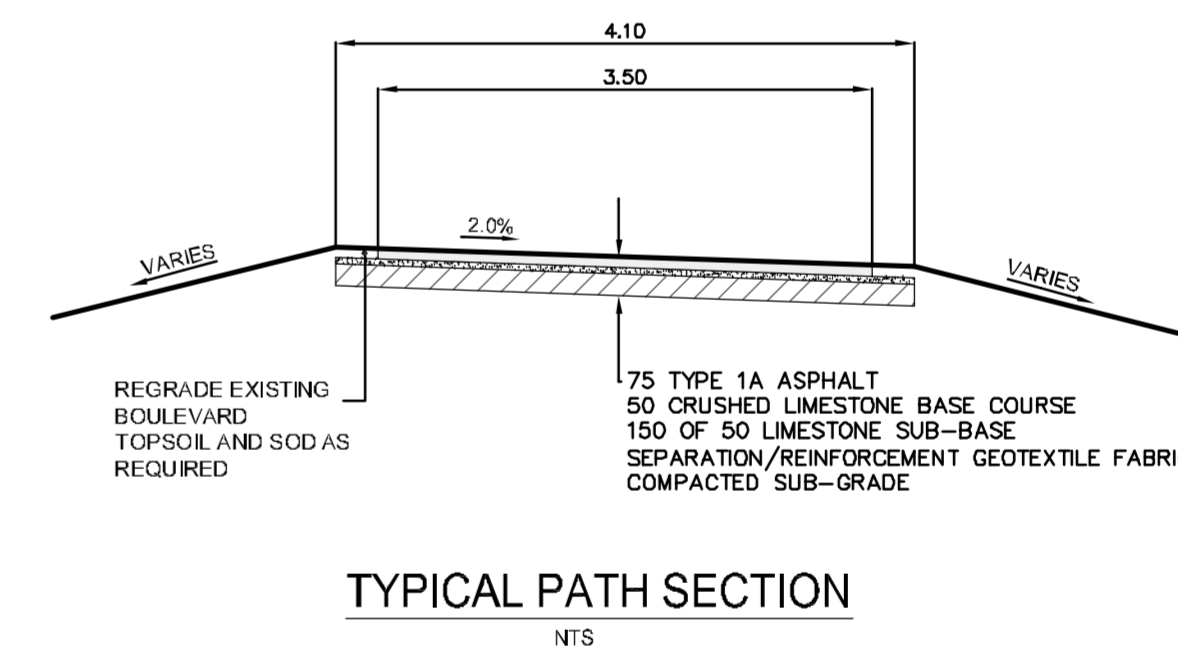
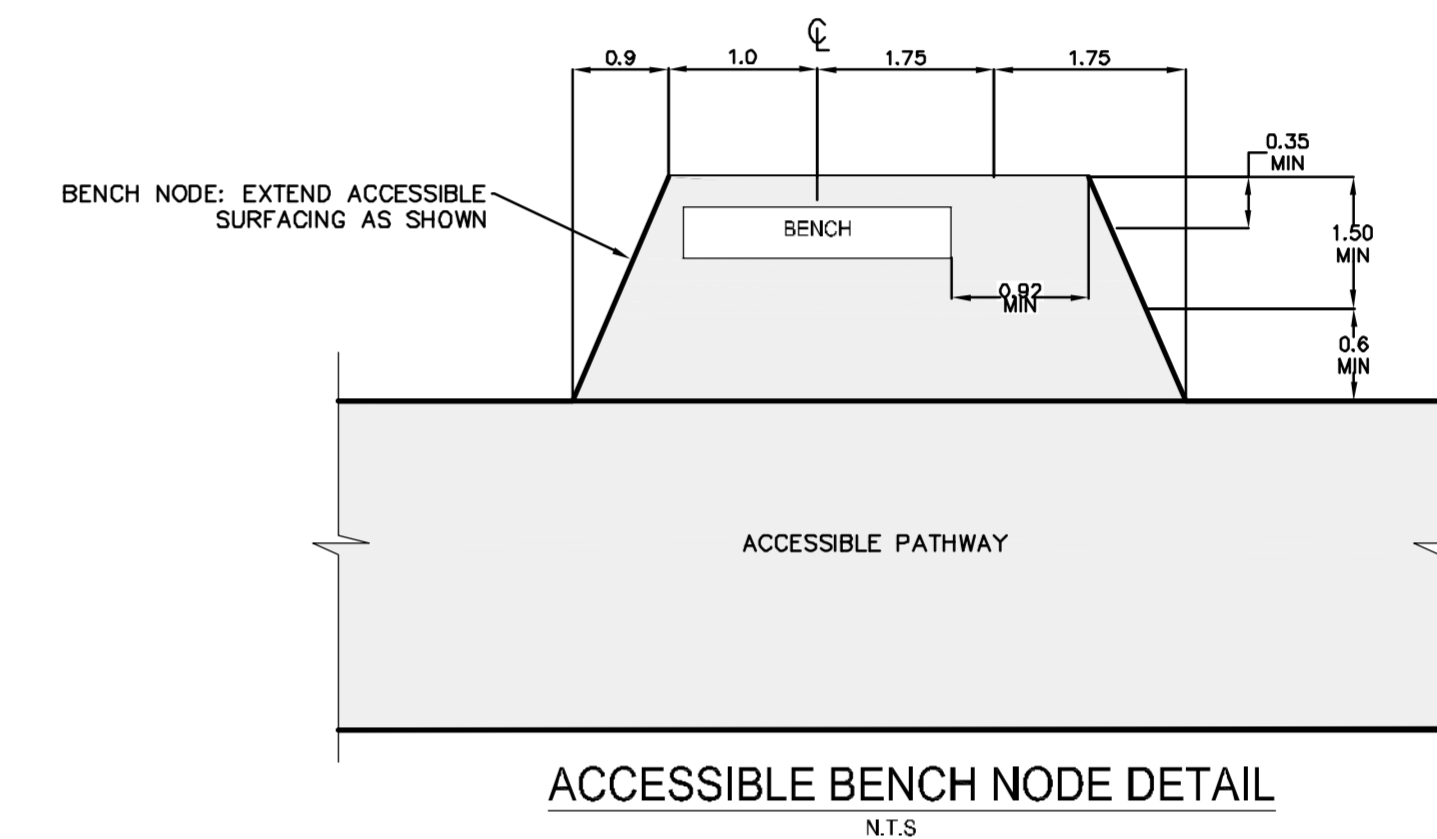
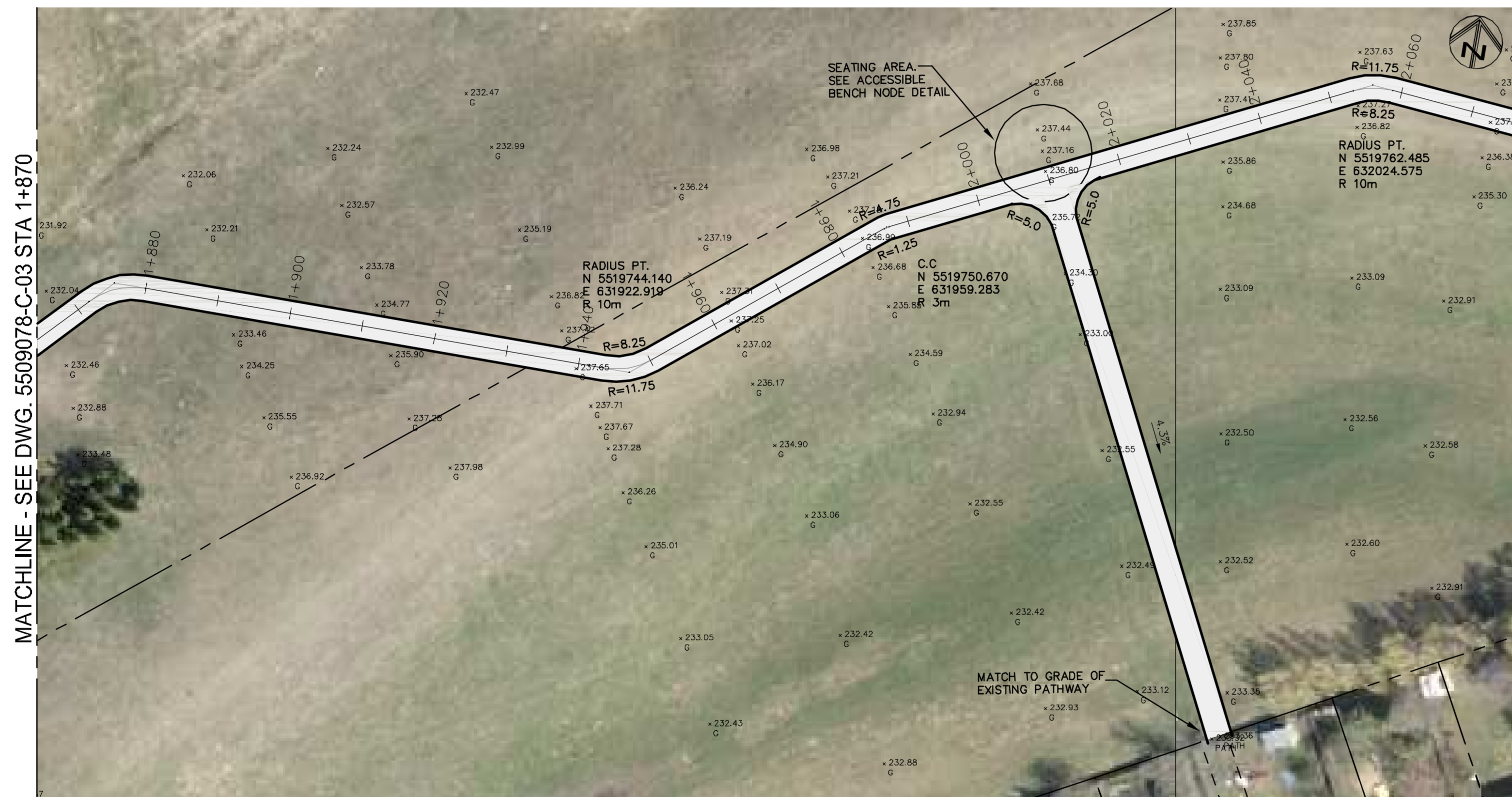


**NOTES:**

1. ALL WORK AND MATERIALS TO BE IN ACCORDANCE WITH THE LATEST REVISIONS OF THE CITY OF WINNIPEG STANDARD CONSTRUCTION SPECIFICATIONS.
2. CONTRACTOR TO VERIFY DEPTH OF UTILITIES PRIOR TO CONSTRUCTION.
3. LOCATION OF UNDERGROUND STRUCTURES AS SHOWN ARE BASED ON THE BEST INFORMATION AVAILABLE, BUT NO GUARANTEE IS GIVEN THAT ALL EXISTING UTILITIES ARE SHOWN OR THAT THE GIVEN LOCATIONS ARE EXACT. CONFIRMATION OF EXISTENCE AND EXACT LOCATION OF ALL SERVICES MUST BE OBTAINED FROM THE INDIVIDUAL UTILITIES BEFORE PROCEEDING WITH CONSTRUCTION.
4. EXCAVATED MATERIAL TO BE USED AS BACKFILL WHERE REQUIRED.
5. CONTRACTOR TO PLACE 50 mm LIMESTONE GRAVEL ON CONSTRUCTION ACCESS ROADS. GRAVEL TO BE REMOVED AND ROAD RESTORED TO PREVIOUS CONDITION UPON COMPLETION OF CONSTRUCTION.
6. ALL SURFACES TO BE MAINTAINED OR RESTORED TO PREVIOUS CONDITION OR BETTER.



METRIC  
WHOLE NUMBERS INDICATE MILLIMETERS  
DECIMALIZED NUMBERS INDICATE METERS

NOTE:  
These design documents are prepared solely for the use by the party with whom the design professional has entered into a contract and there are no representations of any kind made by the design professional to any party with whom the design professional has not entered into a contract.

EXISTING	LEGEND-PLAN	PROPOSED	EXISTING	LEGEND-PLAN	PROPOSED	EXISTING	LEGEND-PROFILE	PROPOSED
---	PROPERTY LINE	---	○	MANHOLE	---	---	EXISTING GROUND	---
31.99	WALKWAY ELEVATION	(32.50)	□	CATCH BASIN	---	---	PROPOSED CENTERLINE	---
~	WATER VALVE	~	HP	HYDRO POLE	---	---	---	---
---	SWALE	---	●	HYDRO POLE WITH LIGHT	---	---	---	---
---	EXISTING DITCH FLOW	---			---	---	---	---
---	MTS CABLE	---			---	---	---	---
---	SEWER	---			---	---	---	---
---	CONC. WWS	---			---	---	---	---
---	WATER	---			---	---	---	---
---	CMP CULVERT	---			---	---	---	---

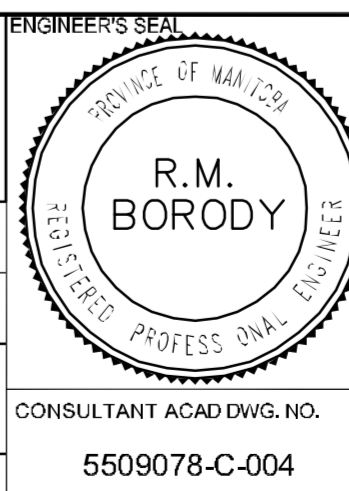
**LOCATIONS APPROVED**  
UNDERGROUND STRUCTURES  
SIGNED BY: \_\_\_\_\_ DATE: \_\_\_\_\_  
SUPV U/G STRUCTURES

LOCATION OF UNDERGROUND STRUCTURES AS SHOWN ARE BASED ON THE BEST INFORMATION AVAILABLE, BUT NO GUARANTEE IS GIVEN THAT ALL EXISTING UTILITIES ARE SHOWN OR THAT THE GIVEN LOCATIONS ARE EXACT. CONFIRMATION OF EXISTENCE AND EXACT LOCATION OF ALL SERVICES MUST BE OBTAINED FROM THE INDIVIDUAL UTILITIES BEFORE PROCEEDING.

G.B.M. ELEV. 232.335	CITY OF WINNIPEG MAPPING AND SURVEYS CAP IN CONCRETE PILE 1/4" CORNER OF BISHOP GRANDIN BLVD AND WAVERLEY AVE.
4	-
3	-
2	-
1	ISSUED FOR REVIEW
NO. REVISIONS	DATE BY

**MMM GROUP**

DESIGNED BY: MR  
CHECKED BY: -  
DRAWN BY: MR  
APPROVED BY: RMB  
HOR SCALE: 1:500  
VERTICAL: 1:50  
DATE: 18.08.09  
DATE: -



**CITY OF WINNIPEG**  
PUBLIC WORKS DEPARTMENT  
ENGINEERING DIVISION

2009 ACTIVE TRANSPORTATION PROGRAM  
BISHOP GRANDIN GREENWAY  
PEMBINA HIGHWAY TO WAVERLEY STREET  
SOUTH SIDE PATHWAY EXTENSION  
STA. 1+870 TO 2+070

CONSULTANT ACAD DWG. NO. 5509078-C-004	SHEET 4 OF 5
---	--------------

Aug 28, 2009, 11:56am  
 P:\5509078-5509078-000-2009 Active Transportation Program\MMM Group\Drawings\BishopGrandinGreenway\04-05-09\AUG18\_2009\mwb\c04\_1+870 TO 2+070