

- NOTES:**
- ALL WORK AND MATERIALS TO BE IN ACCORDANCE WITH THE LATEST REVISIONS OF THE CITY OF WINNIPEG STANDARD CONSTRUCTION SPECIFICATIONS.
 - CONTRACTOR TO VERIFY DEPTH OF UTILITIES PRIOR TO CONSTRUCTION.
 - LOCATION OF UNDERGROUND STRUCTURES AS SHOWN ARE BASED ON THE BEST INFORMATION AVAILABLE BUT NO GUARANTEE IS GIVEN THAT ALL EXISTING UTILITIES ARE SHOWN OR THAT THE GIVEN LOCATIONS ARE EXACT. CONFIRMATION OF EXISTENCE AND EXACT LOCATION OF ALL SERVICES MUST BE OBTAINED FROM THE INDIVIDUAL UTILITIES BEFORE PROCEEDING WITH CONSTRUCTION.
 - EXCAVATED MATERIAL TO BE USED AS BACKFILL WHERE REQUIRED.
 - CONTRACTOR TO PLACE 50 mm LIMESTONE GRAVEL ON CONSTRUCTION ACCESS ROADS. GRAVEL TO BE REMOVED AND ROAD RESTORED TO PREVIOUS CONDITION UPON COMPLETION OF CONSTRUCTION.
 - ALL SURFACES TO BE MAINTAINED OR RESTORED TO PREVIOUS CONDITION OR BETTER.



METRIC
WHOLE NUMBERS INDICATE MILLIMETERS
DECIMALIZED NUMBERS INDICATE METERS

Aug 28, 2009, 11:03am
 P:\5509078-2009 Active Transportation Program\MMM\Drawings\BishopGrandin\BishopGrandin.dwg
 C:\OS2\AUTO\1\2009\myabc\CO\1+560 TO 1+910

NOTE:
These design documents are prepared solely for the use by the party with whom the design professional has entered into a contract and there are no representations of any kind made by the design professional to any party with whom the design professional has not entered into a contract.

EXISTING	LEGEND-PLAN	PROPOSED	EXISTING	LEGEND-PLAN	PROPOSED	EXISTING	LEGEND-PROFILE	PROPOSED
---	PROPERTY LINE	---	---	EXISTING GROUND	---	---	EXISTING GROUND	---
---	WALKWAY ELEVATION	---	---	PROPOSED CENTERLINE	---	---	PROPOSED CENTERLINE	---
---	WATER VALVE	○	○	MANHOLE	○	○	MANHOLE	○
---	SWALE	□	□	CATCH BASIN	□	□	CATCH BASIN	□
---	EXISTING DITCH FLOW	→	→	HYDRO POLE	●	●	HYDRO POLE	●
---	MTS CABLE	→	→	HYDRO POLE WITH LIGHT	●	●	HYDRO POLE WITH LIGHT	●
---	SEWER	---	---					
---	CONC. WWS	---	---					
---	WATER	---	---					
---	CMP CULVERT	---	---					

LOCATIONS APPROVED
UNDERGROUND STRUCTURES

SIGNED BY: _____ DATE: _____

SUPV U/G STRUCTURES DATE

LOCATION OF UNDERGROUND STRUCTURES AS SHOWN ARE BASED ON THE BEST INFORMATION AVAILABLE BUT NO GUARANTEE IS GIVEN THAT ALL EXISTING UTILITIES ARE SHOWN OR THAT THE GIVEN LOCATIONS ARE EXACT. CONFIRMATION OF EXISTENCE AND EXACT LOCATION OF ALL SERVICES MUST BE OBTAINED FROM THE INDIVIDUAL UTILITIES BEFORE PROCEEDING.

NO.	REVISIONS	DATE	BY
1	ISSUED FOR REVIEW	20.08.09	RMB

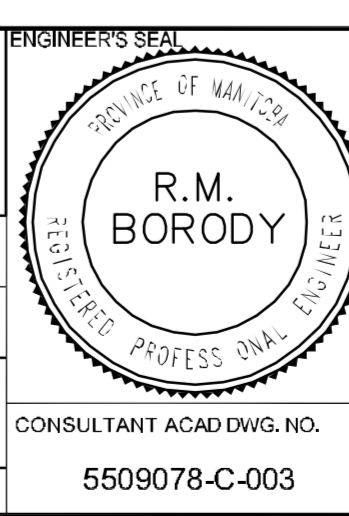
G.B.M. ELEV. 232.335

CITY OF WINNIPEG MAPPING AND SURVEYS CAP IN CONCRETE PILE 1/4 CORNER OF BISHOP GRANDIN BLVD AND WAVERLEY AVE.

MMM GROUP

DESIGNED BY MR
DRAWN BY MR
HOR SCALE 1:500
VERTICAL 1:50
DATE: 18.08.09

CHECKED BY
APPROVED BY RMB
RELEASED FOR CONSTRUCTION
DATE



2009 ACTIVE TRANSPORTATION PROGRAM
BISHOP GRANDIN GREENWAY
PEMBINA HIGHWAY TO WAVERLEY STREET
SOUTH SIDE PATHWAY EXTENSION
STA. 1+560 TO 1+870

Winnipeg
CITY OF WINNIPEG
PUBLIC WORKS DEPARTMENT
ENGINEERING DIVISION

CONSULTANT ACAD DWG. NO.
5509078-C-003

SHEET 3 OF 5