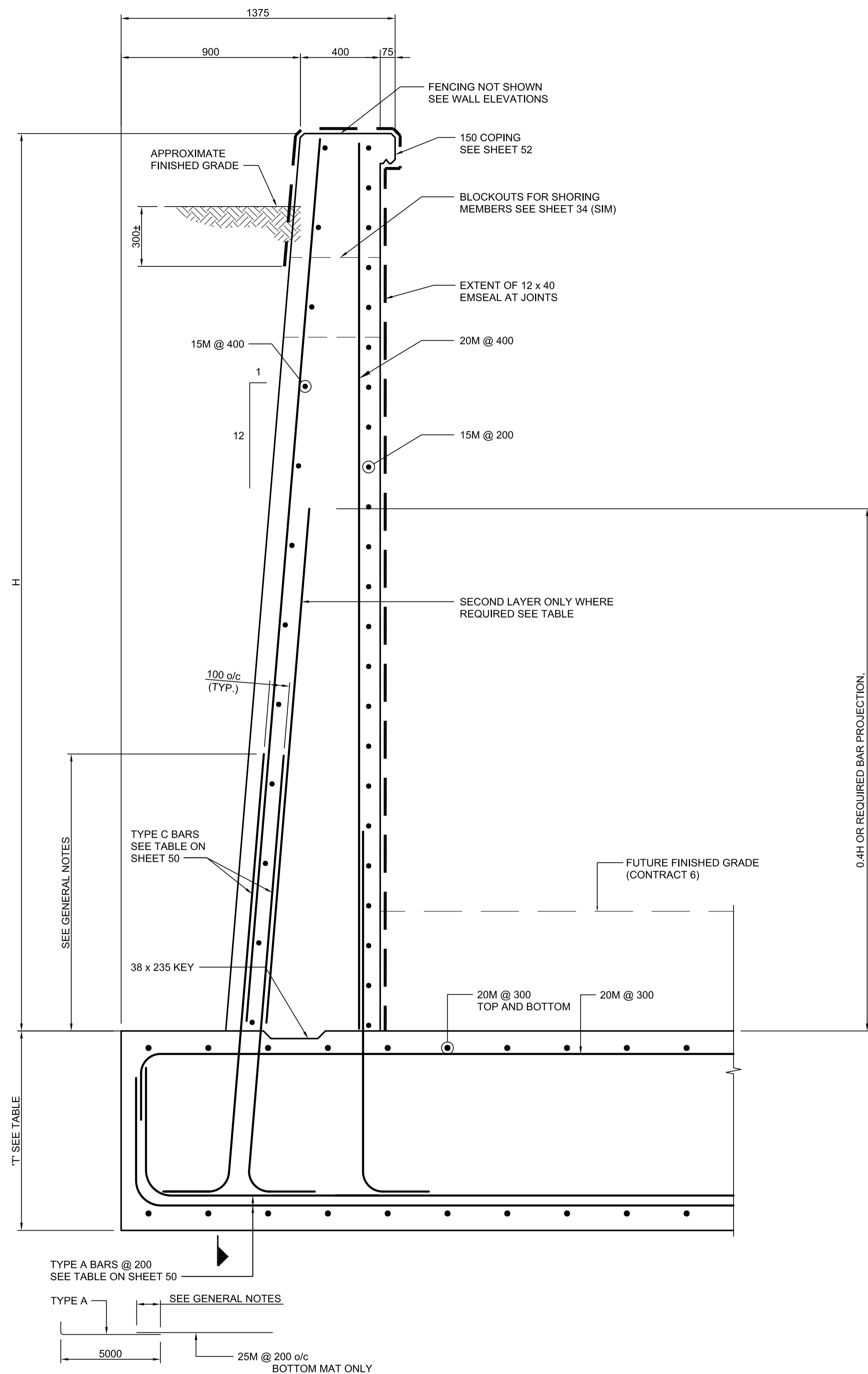


COUNTERFORT OPTION



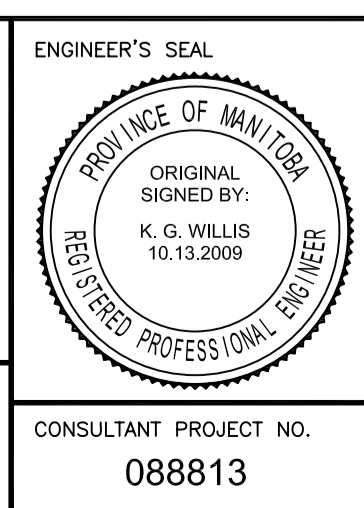
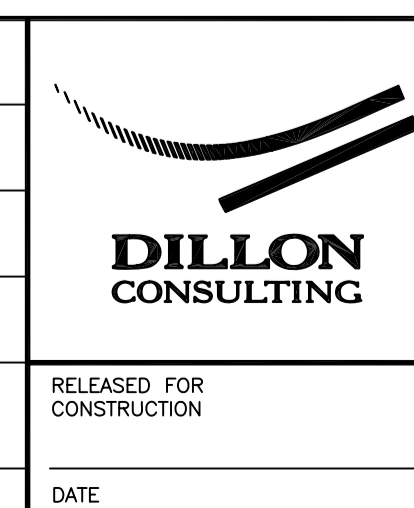
TAPERED OPTION

NOTES:

1. RETAINING WALLS ARE DIVIDED INTO 5 m SEGMENTS FOR DETAILING PURPOSES.
2. EACH SEGMENT MAY BE CONSTRUCTED USING EITHER THE COUNTERFORT OPTION OR THE TAPERED WALL OPTION. DIFFERENT OPTIONS MAY BE USED AT EAST AND WEST ENDS OF THE SAME SEGMENT.
3. WALL JOINTS TO BE SPACED AT 5m o/c MAXIMUM
4. POUR ALTERNATE WALL SEGMENTS WITH A MINIMUM OF 7 DAYS BETWEEN ADJACENT POURS.

SECTION A SCALE 1:15

LOCATION UNDERGROUND	APPROVED STRUCTURES	B.M. ELEV.	DESIGNED BY KGW
SUPV. U/G STRUCTURES COMMITTEE	DATE		DRAWN BY RCB
NOTE: LOCATION OF UNDERGROUND STRUCTURES AS SHOWN ARE BASED ON THE BEST INFORMATION AVAILABLE BUT NO GUARANTEE IS GIVEN THAT ALL EXISTING UTILITIES ARE SHOWN OR THAT THE GIVEN LOCATIONS ARE EXACT. CONFIRMATION OF EXISTENCE AND EXACT LOCATION OF ALL SERVICES MUST BE OBTAINED FROM THE INDIVIDUAL UTILITIES BEFORE PROCEEDING WITH CONSTRUCTION.			CHECKED BY KGW
			APPROVED BY DPK
			HOR. SCALE AS SHOWN
			VERTICAL AS SHOWN
0	ISSUED FOR TENDER	10/13/2009	RCB
NO.	REVISIONS	DATE	BY
			DATE 2009/06/24



THE CITY OF WINNIPEG
TRANSIT DEPARTMENT

SOUTHWEST RAPID TRANSIT CORRIDOR - STAGE 1
TRANSITWAY TUNNEL AT CN RIVERS SUBDIVISION
MILEAGE 1.38 & ASSOCIATED WORKS

CITY DRAWING NUMBER: U237-09-49
SHEET 49 OF 73
CONSULTANT DRAWING NUMBER: C4-S1126-T

RETAINING WALL DETAILS SHEET 1 OF 2

CONSULTANT PROJECT NO. 088813

G:\csm\088813\Contract\Contract_1\Current\C4-S1126-P.dwg