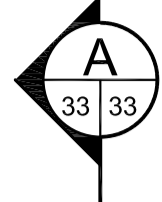
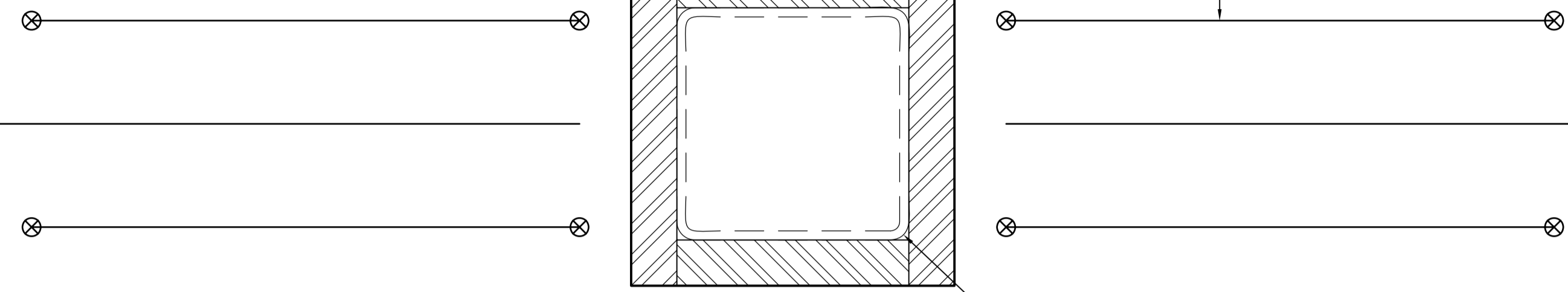


REPLACE TERMINATED BARS WITH 25M EACH FACE ABOVE BLOCKOUT



50 THK RIGID INSULATION ALL AROUND (TYP.)
75 THK FOR 400 mm FROM OUTSIDE FACE

SHIFT STIRRUPS TO CLEAR BLOCKOUT @ SEGMENT TYPES C AND D. LEAVE OUT AFFECTED STIRRUPS @ SEGMENTS TYPES A, B AND E.



TERMINATE VERTICAL BARS AFFECTED BY BLOCKOUT

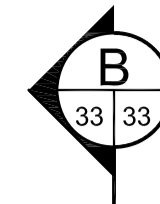
SHORING MEMBER

BREAK HORIZONTAL BARS @ BLOCKOUT

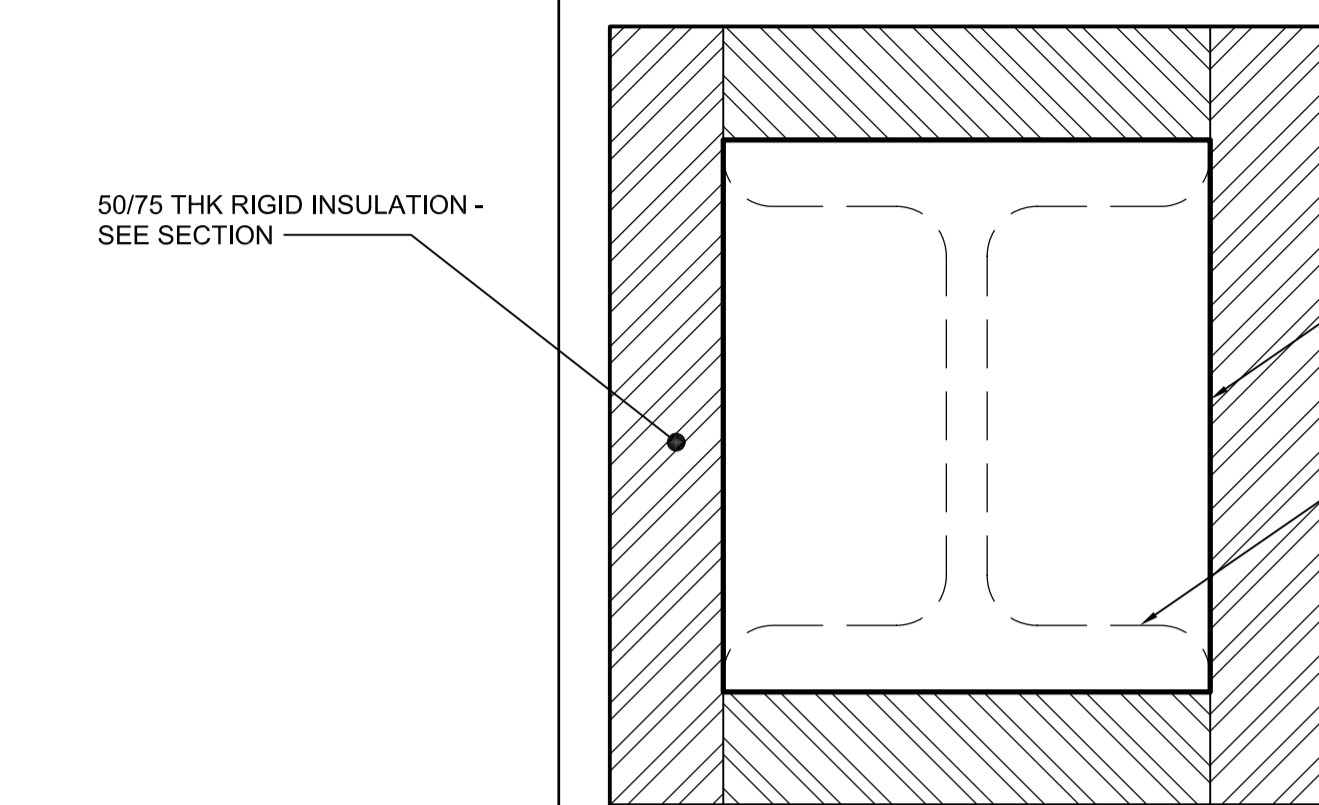
WALL BLOCKOUT ELEVATION

SCALE 1:5

50/75 THK RIGID INSULATION - SEE SECTION



SHIFT TRANSVERSE AND LONGITUDINAL REINFORCEMENT TO CLEAR BLOCKOUTS WHILE MAINTAINING REQUIRED AVERAGE SPACING



PLYWOOD BOX

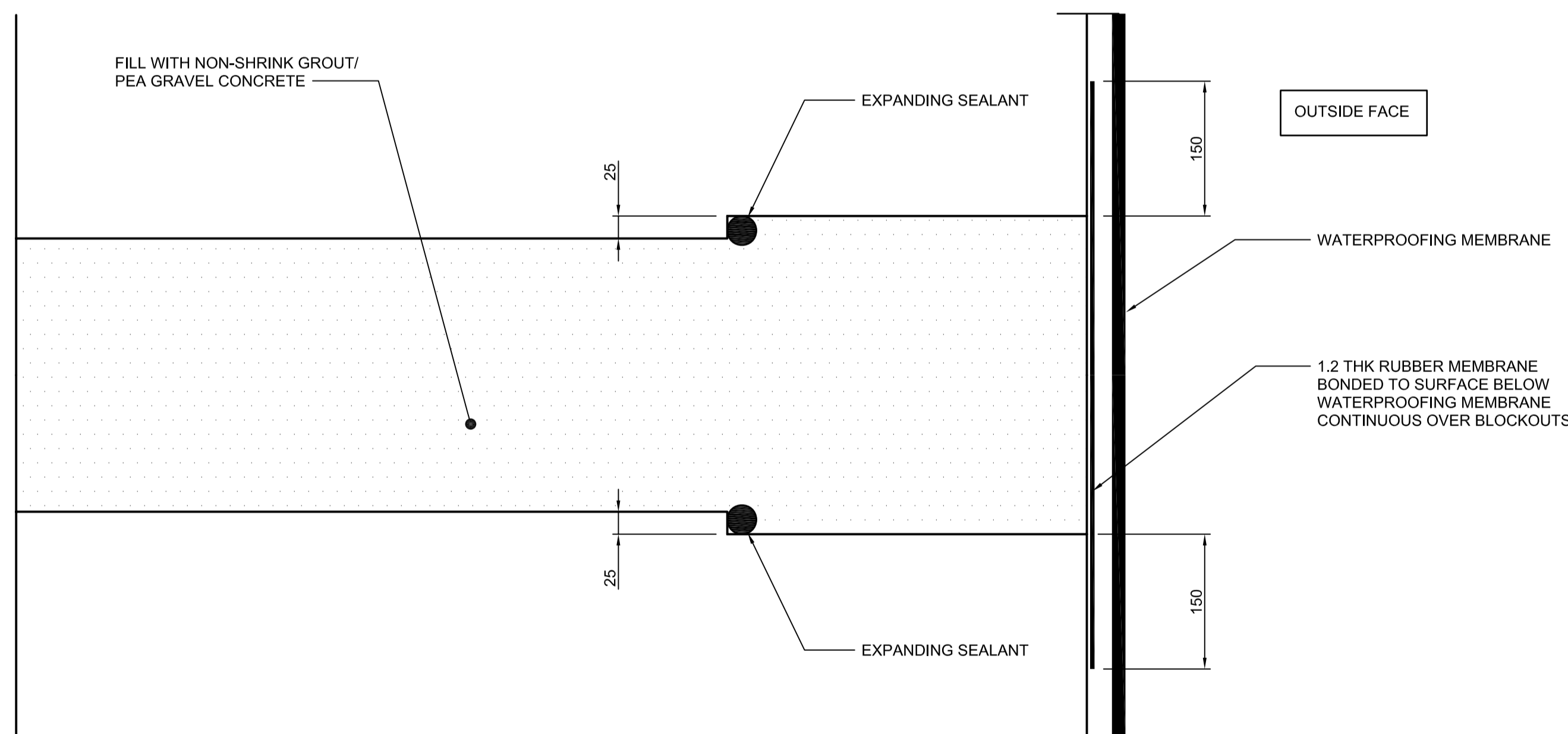
SHORING MEMBER

FOUNDATION BLOCKOUT PLAN

SCALE 1:5

INSIDE FACE

FILL WITH NON-SHRINK GROUT/PEA GRAVEL CONCRETE



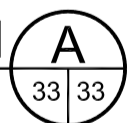
OUTSIDE FACE

WATERPROOFING MEMBRANE

1.2 THK RUBBER MEMBRANE BONDED TO SURFACE BELOW WATERPROOFING MEMBRANE CONTINUOUS OVER BLOCKOUTS

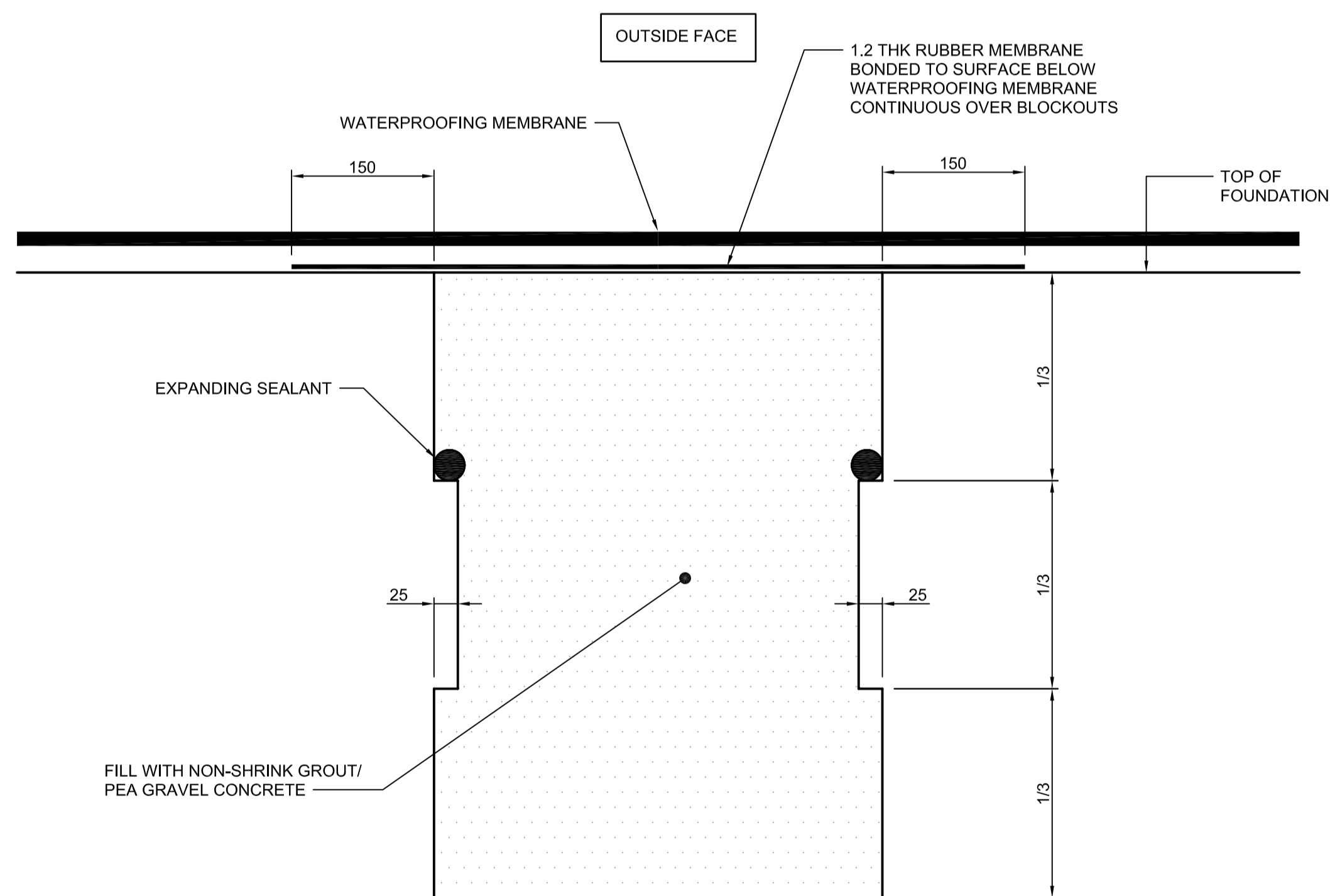
WALL BLOCKOUT SECTION A

SCALE 1:5



OUTSIDE FACE

1.2 THK RUBBER MEMBRANE BONDED TO SURFACE BELOW WATERPROOFING MEMBRANE CONTINUOUS OVER BLOCKOUTS



WATERPROOFING MEMBRANE

TOP OF FOUNDATION

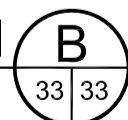
EXPANDING SEALANT

FILL WITH NON-SHRINK GROUT/PEA GRAVEL CONCRETE

UNDERSIDE OF FOUNDATION

FOUNDATION BLOCKOUT SECTION B

SCALE 1:5



G:\csa\088813\Contract\Contract - 1\Current\C4-S1111-P.dwg



LOCATION UNDERGROUND	APPROVED STRUCTURES	B.M. ELEV.	DESIGNED BY	KGW
SUPV. U/G STRUCTURES COMMITTEE	DATE		DRAWN BY	RCB
NOTE: LOCATION OF UNDERGROUND STRUCTURES AS SHOWN ARE BASED ON THE BEST INFORMATION AVAILABLE BUT NO GUARANTEE IS GIVEN THAT ALL EXISTING UTILITIES ARE SHOWN OR THAT THE GIVEN LOCATIONS ARE EXACT. CONFIRMATION OF EXISTENCE AND EXACT LOCATION OF ALL SERVICES MUST BE OBTAINED FROM THE INDIVIDUAL UTILITIES BEFORE PROCEEDING WITH CONSTRUCTION.			CHECKED BY	KGW
			APPROVED BY	DPK
			HOR. SCALE	AS SHOWN
			VERTICAL	AS SHOWN
0	ISSUED FOR TENDER	10/13/2009	DATE	2009/06/24
NO.	REVISIONS	DATE	BY	DATE

RELEASING OFFICE	RELEASED FOR CONSTRUCTION	DATE

ENGINEER'S SEAL	PROVINCE OF MANITOBA ORIGINAL SIGNED BY: K. G. WILLIS 10.13.2009 REGISTERED PROFESSIONAL ENGINEER
CONSULTANT PROJECT NO.	088813

DILLON CONSULTING

THE CITY OF WINNIPEG TRANSIT DEPARTMENT
SOUTHWEST RAPID TRANSIT CORRIDOR - STAGE 1 TRANSITWAY TUNNEL AT CN RIVERS SUBDIVISION MILEAGE 1.38 & ASSOCIATED WORKS
SHORING BLOCKOUT DETAILS

CITY DRAWING NUMBER U237-09-34	SHEET 34	OF 73
CONSULTANT DRAWING NUMBER C4-S1111-T		