

BOREHOLE LOGS

SCALE 1:500

GENERAL NOTES

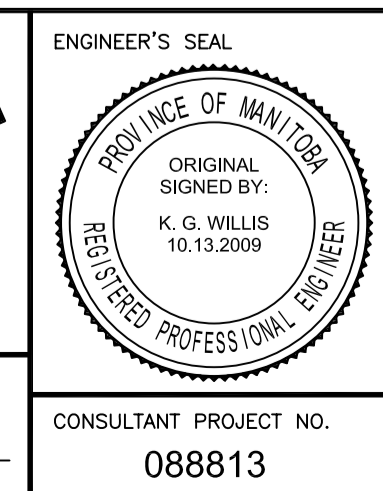
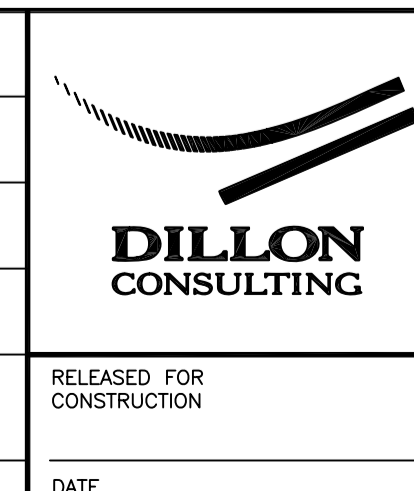
1. THE INFORMATION ON THIS DRAWING HAS BEEN EXTRACTED FROM THE GEOTECHNICAL REPORT PREPARED BY KLOHN CRIPPEN DATED MARCH 2004. IN THE EVENT OF A DISCREPANCY BETWEEN THE GEOTECHNICAL REPORT AND THIS DRAWING, THE ORIGINAL GEOTECHNICAL REPORT SHALL GOVERN. THE CONTRACTOR IS STRONGLY URGED TO REVIEW ALL AVAILABLE GEOTECHNICAL DATA.
2. ALL GEOTECHNICAL INFORMATION PROVIDED FOR THIS PROJECT HAS BEEN COMPILED FOR THE CITY FOR DESIGN PURPOSES ONLY. WHILE IT IS BELIEVED TO CORRECTLY REPRESENT OR SUMMARIZE OBSERVATIONS MADE DURING TESTING, IT IS ONLY VALID FOR THE PRECISE LOCATIONS SHOWN, AND IS NOT TO BE CONSTRUED AS GUARANTEEING THE ACTUAL MATERIALS AND CONDITIONS EXISTING THROUGHOUT THE SITE. THE TESTING METHODS MAY NOT HAVE DETERMINED THE PRESENCE, ABSENCE OR EXTENT OF BOULDER, HARD OR SOFT FORMATIONS, WATER TABLES, ARTESIAN CONDITIONS, AND OTHER VARIABLES. IT IS THE RESPONSIBILITY OF OTHERS USING THIS INFORMATION TO ENSURE THAT IT IS ADEQUATE FOR THEIR PURPOSE OR TO SUPPLEMENT IT WITH ADDITIONAL INFORMATION AS MAY BE NEEDED.



LOCATION UNDERGROUND	APPROVED STRUCTURES	B.M. ELEV.
SUPY. U/G STRUCTURES COMMITTEE	DATE	
NOTE: LOCATION OF UNDERGROUND STRUCTURES AS SHOWN ARE BASED ON THE BEST INFORMATION AVAILABLE BUT NO GUARANTEE IS GIVEN THAT ALL EXISTING UTILITIES ARE SHOWN OR THAT THE GIVEN LOCATIONS ARE EXACT. CONFIRMATION OF EXISTENCE AND EXACT LOCATION OF ALL SERVICES MUST BE OBTAINED FROM THE INDIVIDUAL UTILITIES BEFORE PROCEEDING WITH CONSTRUCTION.		
0	ISSUED FOR TENDER	10/13/2009 RCB
NO.	REVISIONS	DATE BY

DESIGNED BY	KGW
DRAWN BY	RCB
CHECKED BY	KGW
APPROVED BY	DPK
HOR. SCALE	AS SHOWN
VERTICAL	AS SHOWN
DATE	2009/06/24

RELEASED FOR CONSTRUCTION	DATE
---------------------------	------



THE CITY OF WINNIPEG
TRANSIT DEPARTMENT

Winnipeg

SOUTHWEST RAPID TRANSIT CORRIDOR - STAGE 1
TRANSITWAY TUNNEL AT CN RIVERS SUBDIVISION
MILEAGE 1.38 & ASSOCIATED WORKS

CITY DRAWING NUMBER: U237-09-09
SHEET 09 OF 73
CONSULTANT DRAWING NUMBER: C4-G108-T

CONSULTANT PROJECT NO. 088813

BOREHOLE LOGS SHEET 1 OF 2