

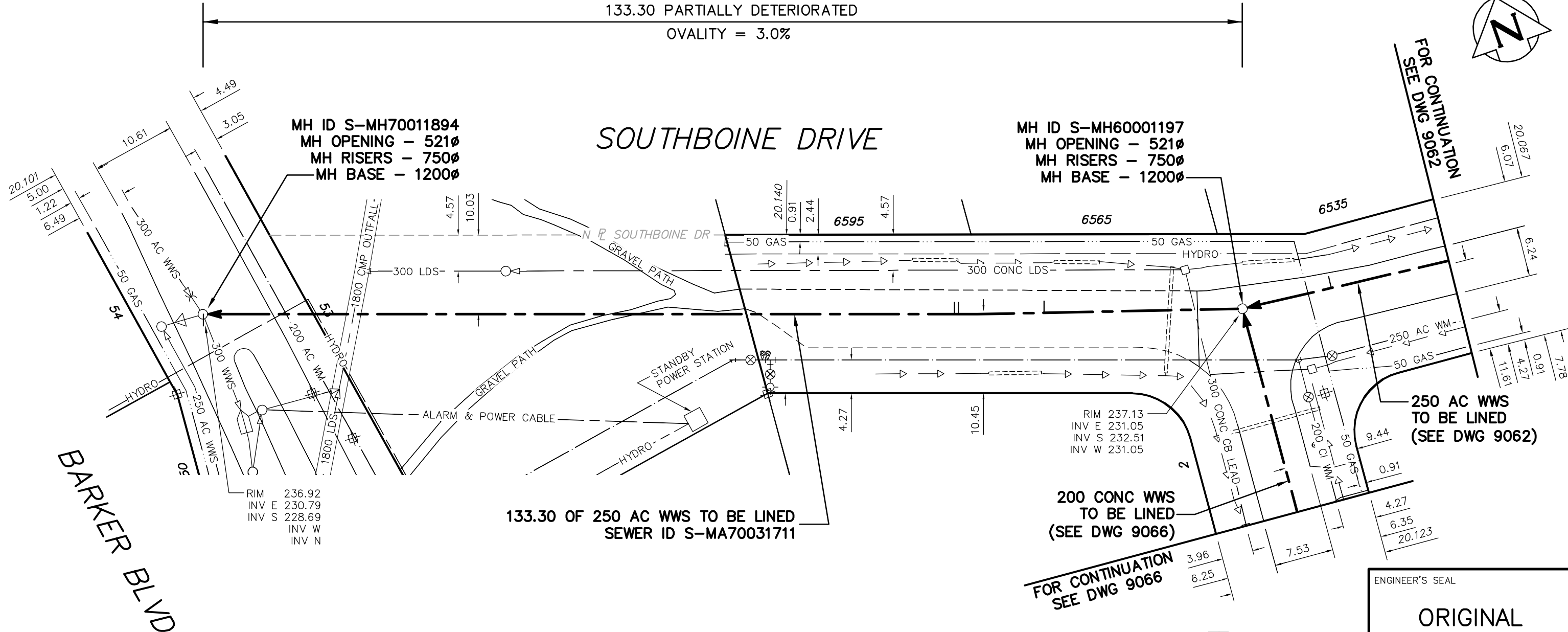
133.30 PARTIALLY DETERIORATED
OVALITY = 3.0%

SOUTHBOINE DRIVE

MH ID S-MH70011894
MH OPENING - 521Ø
MH RISERS - 750Ø
MH BASE - 1200Ø

MH ID S-MH60001197
MH OPENING - 521Ø
MH RISERS - 750Ø
MH BASE - 1200Ø

FOR CONTINUATION
SEE DWG 9062



RIM 236.92
INV E 230.79
INV S 228.69
INV W
INV N

RIM 237.13
INV E 231.05
INV S 232.51
INV W 231.05

133.30 OF 250 AC WWS TO BE LINED
SEWER ID S-MA70031711

200 CONCL WWS
TO BE LINED
(SEE DWG 9066)

250 AC WWS
TO BE LINED
(SEE DWG 9062)

BARKER BLVD

WILLOW
RIDGE RD

SEWER JUNCTION INFORMATION FROM SEWER VIDEO INSPECTION SEWER ID S-MA70031711				
DISTANCE FROM MH ID S-MH60001197				
25.20	W	150Ø	TOP	JN
36.10	W	150Ø	TOP	JN
36.60	W	150Ø	TOP	JN
132.00	W	150Ø	BOTTOM	JN

METRIC
WHOLE NUMBERS INDICATE MILLIMETRES
DECIMALIZED NUMBERS INDICATE METRES

ENGINEER'S SEAL

**ORIGINAL
SIGNED BY
S.R.J.
COURNOYER
09/09/28**

BID OPPORTUNITY: 567-2009
FILENAME : 9063.dwg
PLOT DATE : 2009 09 28

B.M. ELEV.	FIELD BOOK #:	CITY OF WINNIPEG WATER AND WASTE ENGINEERING DIVISION		THE CITY OF WINNIPEG WATER AND WASTE DEPARTMENT	
POSTED TO LIS		DESIGNED BY: SC	CHECKED BY: SC	2009 SEWER RENEWALS BY CIPP LININGS, CONTRACT 15	
		DRAWN BY: C.JH/WKT	APPROVED BY: KZ	SOUTHBOINE DRIVE	
		HOR. SCALE: 1:500	RELEASED FOR CONSTRUCTION	MH AT WILLOW RIDGE ROAD TO MH AT BARKER BOULEVARD	
		VERTICAL		SHEET 42 OF 45	
NO.	REVISIONS	DATE	BY	CITY DRAWING NUMBER	
		2009 09 25		9063	