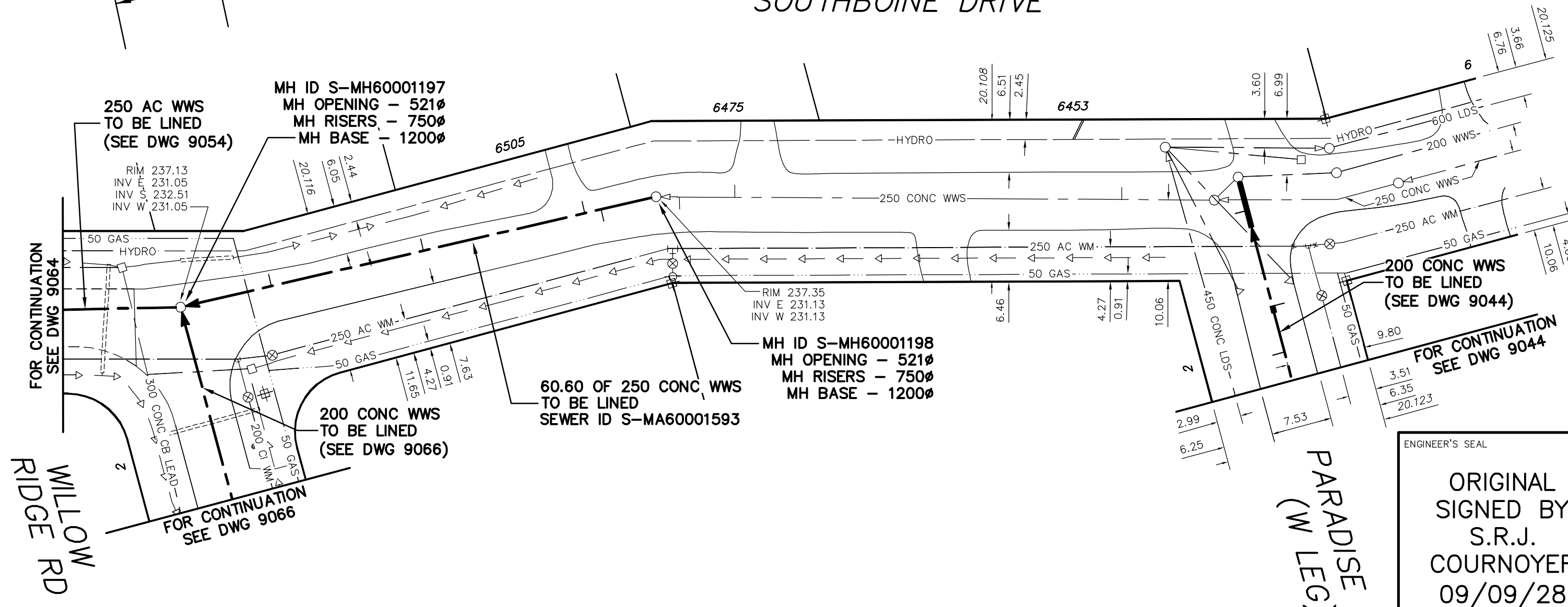


SOUTHBOINE DRIVE

13.10 FULLY DETERIORATED
OVALITY = 3.0%

47.0 PARTIALLY DETERIORATED
OVALITY = 3.0%



SEWER JUNCTION INFORMATION
FROM SEWER VIDEO INSPECTION
SEWER ID S-MA60001593

DISTANCE FROM MH ID S-MH60001198				
7.00	W	150ø	SOUTH	CNI
9.10	W	150ø	TOP	CN
29.70	W	150ø	TOP	CN
49.10	W	150ø	TOP	CN

METRIC

WHOLE NUMBERS INDICATE MILLIMETRES
DECIMALIZED NUMBERS INDICATE METRES

ENGINEER'S SEAL

ORIGINAL
SIGNED BY
S.R.J.
COURNOYER
09/09/28

BID OPPORTUNITY: 567-2009
FILENAME : 9062.dwg
PLOT DATE : 2009 09 28

B.M. ELEV. POSTED TO LIS	FIELD BOOK #: 	CITY OF WINNIPEG WATER AND WASTE ENGINEERING DIVISION	THE CITY OF WINNIPEG WATER AND WASTE DEPARTMENT	2009 SEWER RENEWALS BY CIPP LININGS SOUTHBOINE DRIVE 1ST MH E OF PARADISE BAY (W LEG) TO MH AT WILLOW RIDGE ROAD	SHEET 41 OF 45 CITY DRAWING NUMBER 9062
DESIGNED BY: SC CHECKED BY: SC		DRAWN BY: C.JH/WKT APPROVED BY: KZ		HOR. SCALE: 1:500 VERTICAL: _____ DATE: 2009 09 25	
NO. REVISIONS 		RELEASED FOR CONSTRUCTION 			